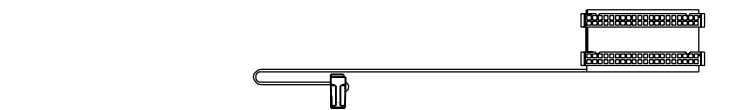
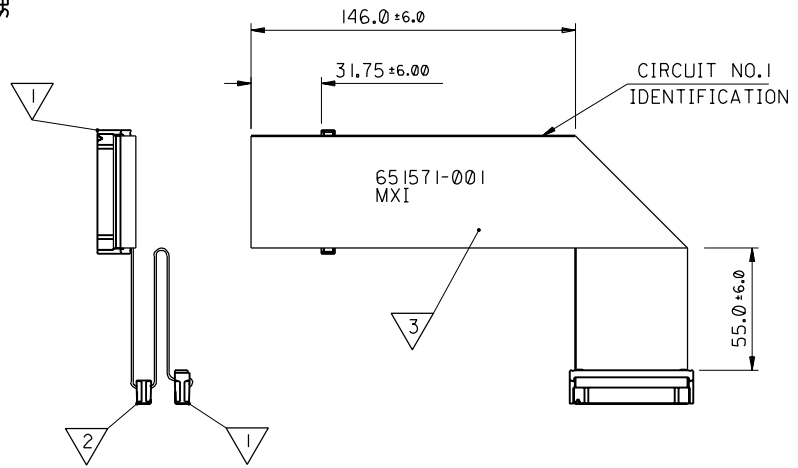


PART NO. 92307-0002
 DWG. NO. SDA-92307-0002



HARNESS IDENTIFICATION POSITIONS ON PRE-FOLDED HARNESS.(SEE NOTE 2)

BILL OF MATERIALS

NO.	QTY	SUPPLIER	DESCRIPTION	PART No.	SEE NOTE
1	2	MOLEX	QF50 40 CCT CONNECTOR (CCT 20 VOID)	90781-9001	1,3
2	1	MOLEX	QF50 40 CCT CONNECTOR (CCT 20 VOID)	90781-9017	1,3
3			40 CCT RIBBON CABLE 28 AWG		1,2

NOTES:

- SEE PRODUCT SPECIFICATION PS-99020-0015.
- PRINT INTEL P/N "651571-001" APPROXIMATELY WHERE SHOWN, PRINT MOLEX IDENTIFICATION MARK 'MXI', APPROXIMATELY WHERE SHOWN, PRINT 'P1', 'P2', AND 'P3' APPROXIMATELY WHERE SHOWN. TEXT HEIGHT 3.2 MIN.
- HARNESS TO BE 100% ELECTRICALLY TESTED
- PACKAGING: PARTS TO BE PACKED LOOSELY IN BOXES. UL LABEL TO BE APPLIED TO EACH BOX.

PART NO. MOD. ECN E70699		REVISIONS		DIMENSIONS SHOWN (METRIC) INCH		DRWG BY		REVISE ONLY ON CAD SYSTEM		SHL REV.	
97.05.06 MK		A2		UNLESS OTHERWISE SPECIFIED TOLERANCES: ANGULAR ± 5°		MK		CAD/CAM FILENAME S92307X2 DGN		THIS DRAWING CONTAINS INFORMATION THAT IS PROPRIETARY TO MOLEX INC. & SHOULD NOT BE USED WITHOUT WRITTEN PERMISSION	
LTR		A2		INCH (METRIC)		CHK'D BY		TITLE			
				3 PLACE ± .				RIBBON CABLE HARNESS			
				2 PLACE ± .				MOLEX MOLEX EUROPE			
				1 PLACE ±				SHEET NO. DATE		10F1 97/02/14	
				DRAFT WHERE APPLICABLE MUST REMAIN WITHIN DIMENSIONS		APP'D BY		PART NO.		DWG NO.	
				DESIGN DIMENSION (PRIMARY) <input checked="" type="checkbox"/> (MM) <input type="checkbox"/> IN.		SCALE		92307-0002		SDA-92307-0002	
				EQUIVALENT DIMENSION (SECONDARY) <input type="checkbox"/> (MM) <input type="checkbox"/> IN.		1:2		SIZE		B	