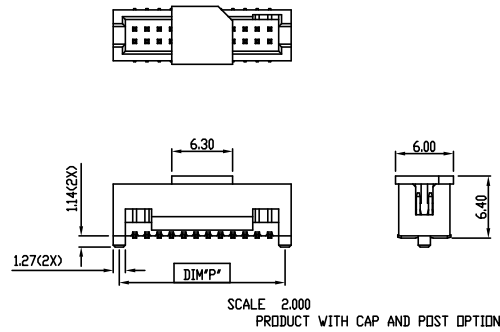
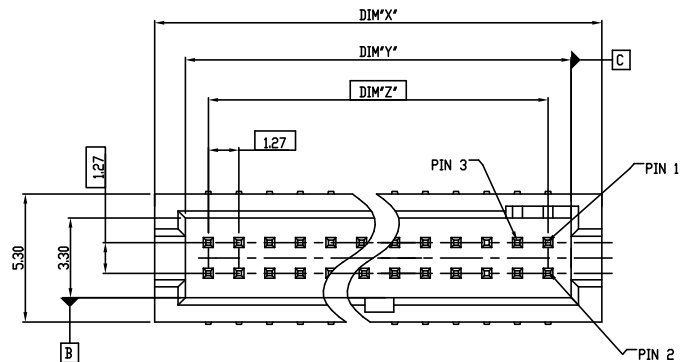
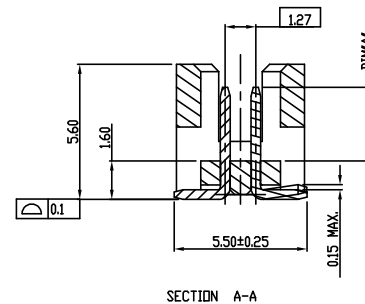
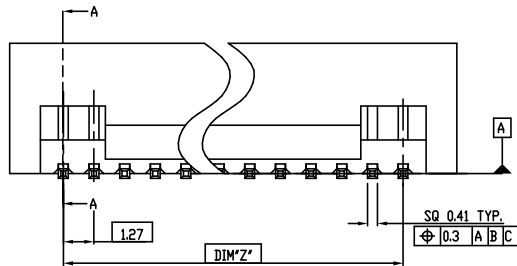


PART NO.  
20021221

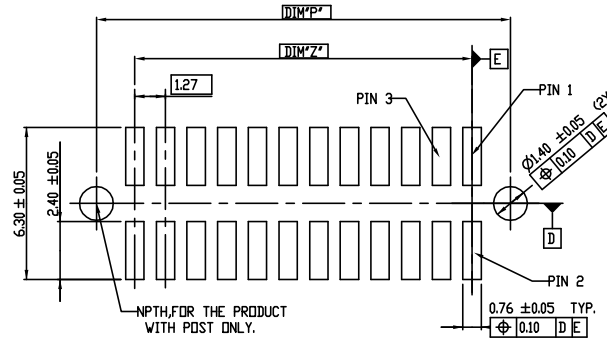


- NOTES:
- 1.MATERIAL:  
HOUSING: HIGH TEMPERATURE THERMOPLASTIC, UL94-V0 BLACK.  
TERMINAL: COPPER ALLDY
  - 2.ONLY SHOWN THE FEATURE OF THE ABSENT PIN,THE OTHER SPEC IS THE SAME AS THE FULL PIN PRODUCT.
  - 3.THE HOUSING WILL WITHSTAND EXPOSURE TO 260°C PEAK TEMPERATURE FOR 10 SECONDS IN A CONVECTION INFRA-RED OR VAPOR PHASE REFLOW OVEN.
  - 4.THIS PRODUCT MEETS EUROPEAN UNION DIRECTIVES AND OTHER COUNTRY REGULATIONS AS DESCRIBED IN GS-22-008.
  - 5.PRODUCT SPEC: GS-12-629
  - 6.PACKAGE SPEC: GS-14-1420
  - 7.THE METAL CAP IS OPTION AS CUSTOMER REQUIREMENT.
  - 8.20021221-00312CALF FOR CUSTOMER SPECIFIED WITH 0.76um MIN. Au AT CONTACT, 1.27um MIN. MATTE TIN AT TAIL.



|             |  |             |  |             |  |                    |  |                          |  |
|-------------|--|-------------|--|-------------|--|--------------------|--|--------------------------|--|
| mat'l. code |  | surface     |  | tolerance   |  | projection         |  | product family           |  |
|             |  | ISO 1302 ✓  |  | ISO 406 ISO |  | 1101               |  | MINITEK127®              |  |
| ltr         |  | ecn no      |  | dr          |  | date               |  | title                    |  |
| N           |  | ELX-N-23548 |  | TIM         |  | 03/21/16           |  | SHROUDED HDR VT SMT      |  |
| P           |  | ELX-N-24142 |  | TIM         |  | 05/23/16           |  |                          |  |
| R           |  | ELX-N-30802 |  | TONY        |  | 2018-07-26         |  |                          |  |
| S           |  | ELX-N-31947 |  | TONY        |  | 2018-11-23         |  | scale 1:1                |  |
|             |  |             |  | dr          |  | ZK HU 08/07/12     |  | dwg no                   |  |
|             |  |             |  | eng         |  | ZK HU 08/07/12     |  | sheet 1 of 3             |  |
|             |  |             |  | chr         |  | BIAN RICK 08/07/12 |  | 20021221                 |  |
|             |  |             |  | app         |  | BIAN RICK 08/07/12 |  | A3                       |  |
| sheet       |  | revision    |  | S           |  | S                  |  | type                     |  |
| index       |  | sheet       |  | 1           |  | 2                  |  | Product Customer Drawing |  |

| PART NO.          | POS.   | DIM'X' | DIM'Y' | DIM'Z' | DIM'P' |
|-------------------|--------|--------|--------|--------|--------|
| 20021221-XX06XXLF | 2 X 3  | 6.99   | 4.45   | 2.54   | 5.72   |
| 20021221-XX08XXLF | 2 X 4  | 8.26   | 5.72   | 3.81   | 6.99   |
| 20021221-XX10XXLF | 2 X 5  | 9.53   | 6.99   | 5.08   | 8.26   |
| 20021221-XX12XXLF | 2 X 6  | 10.80  | 8.26   | 6.35   | 9.53   |
| 20021221-XX14XXLF | 2 X 7  | 12.07  | 9.53   | 7.62   | 10.80  |
| 20021221-XX16XXLF | 2 X 8  | 13.34  | 10.80  | 8.89   | 12.07  |
| 20021221-XX18XXLF | 2 X 9  | 14.61  | 12.07  | 10.16  | 13.34  |
| 20021221-XX20XXLF | 2 X 10 | 15.88  | 13.34  | 11.43  | 14.61  |
| 20021221-XX22XXLF | 2 X 11 | 17.15  | 14.61  | 12.70  | 15.88  |
| 20021221-XX24XXLF | 2 X 12 | 18.42  | 15.88  | 13.97  | 17.15  |
| 20021221-XX26XXLF | 2 X 13 | 19.69  | 17.15  | 15.24  | 18.42  |
| 20021221-XX28XXLF | 2 X 14 | 20.96  | 18.42  | 16.51  | 19.69  |
| 20021221-XX30XXLF | 2 X 15 | 22.23  | 19.69  | 17.78  | 20.96  |
| 20021221-XX32XXLF | 2 X 16 | 23.50  | 20.96  | 19.05  | 22.23  |
| 20021221-XX34XXLF | 2 X 17 | 24.77  | 22.23  | 20.32  | 23.50  |
| 20021221-XX36XXLF | 2 X 18 | 26.04  | 23.50  | 21.59  | 24.77  |
| 20021221-XX38XXLF | 2 X 19 | 27.31  | 24.77  | 22.86  | 26.04  |
| 20021221-XX40XXLF | 2 X 20 | 28.58  | 26.04  | 24.13  | 27.31  |
| 20021221-XX42XXLF | 2 X 21 | 29.85  | 27.31  | 25.40  | 28.58  |
| 20021221-XX44XXLF | 2 X 22 | 31.12  | 28.58  | 26.67  | 29.85  |
| 20021221-XX46XXLF | 2 X 23 | 32.39  | 29.85  | 27.94  | 31.12  |
| 20021221-XX48XXLF | 2 X 24 | 33.66  | 31.12  | 29.21  | 32.39  |
| 20021221-XX50XXLF | 2 X 25 | 34.93  | 32.39  | 30.48  | 33.66  |
| 20021221-XX52XXLF | 2 X 26 | 36.20  | 33.66  | 31.75  | 34.93  |
| 20021221-XX54XXLF | 2 X 27 | 37.47  | 34.93  | 33.02  | 36.20  |
| 20021221-XX56XXLF | 2 X 28 | 38.74  | 36.20  | 34.29  | 37.47  |
| 20021221-XX58XXLF | 2 X 29 | 40.01  | 37.47  | 35.56  | 38.74  |
| 20021221-XX60XXLF | 2 X 30 | 41.28  | 38.74  | 36.83  | 40.01  |
| 20021221-XX62XXLF | 2 X 31 | 42.55  | 40.01  | 38.10  | 41.28  |
| 20021221-XX64XXLF | 2 X 32 | 43.82  | 41.28  | 39.37  | 42.55  |
| 20021221-XX66XXLF | 2 X 33 | 45.09  | 42.55  | 40.64  | 43.82  |
| 20021221-XX68XXLF | 2 X 34 | 46.36  | 43.82  | 41.91  | 45.09  |
| 20021221-XX70XXLF | 2 X 35 | 47.63  | 45.09  | 43.18  | 46.36  |
| 20021221-XX72XXLF | 2 X 36 | 48.90  | 46.36  | 44.45  | 47.63  |
| 20021221-XX74XXLF | 2 X 37 | 50.17  | 47.63  | 45.72  | 48.90  |
| 20021221-XX76XXLF | 2 X 38 | 51.44  | 48.90  | 46.99  | 50.17  |
| 20021221-XX78XXLF | 2 X 39 | 52.71  | 50.17  | 48.26  | 51.44  |
| 20021221-XX80XXLF | 2 X 40 | 53.98  | 51.44  | 49.53  | 52.71  |
| 20021221-XX82XXLF | 2 X 41 | 55.25  | 52.71  | 50.80  | 53.98  |
| 20021221-XX84XXLF | 2 X 42 | 56.52  | 53.98  | 52.07  | 55.25  |
| 20021221-XX86XXLF | 2 X 43 | 57.79  | 55.25  | 53.34  | 56.52  |
| 20021221-XX88XXLF | 2 X 44 | 59.06  | 56.52  | 54.61  | 57.79  |
| 20021221-XX90XXLF | 2 X 45 | 60.33  | 57.79  | 55.88  | 59.06  |
| 20021221-XX92XXLF | 2 X 46 | 61.60  | 59.06  | 57.15  | 60.33  |
| 20021221-XX94XXLF | 2 X 47 | 62.87  | 60.33  | 58.42  | 61.60  |
| 20021221-XX96XXLF | 2 X 48 | 64.14  | 61.60  | 59.69  | 62.87  |
| 20021221-XX98XXLF | 2 X 49 | 65.41  | 62.87  | 60.96  | 64.14  |
| 20021221-XXA0XXLF | 2 X 50 | 66.68  | 64.14  | 62.23  | 65.41  |



RECOMMENDED PCB LAYOUT  
SCALE 5.000

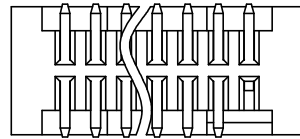
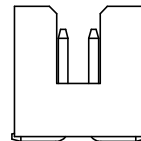
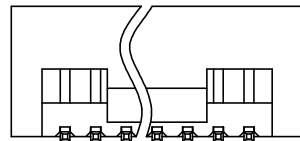
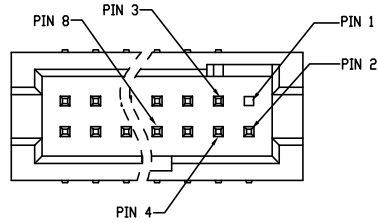
20021221-X X X X X X LF

- LEAD FREE
- PLATING CODE(OTHER SEE NOTES.8)
- 1: GOLD FLASH AT CONTACT, 1.27um MIN. MATTE TIN AT TAIL
- 2: GOLD FLASH AT CONTACT, GOLD FLASH AT TAIL
- 4: 0.25um Au MIN. AT CONTACT, 1.27um MIN.MATTE TIN AT TAIL
- 5: 0.25um Au MIN. AT CONTACT, GOLD FLASH AT TAIL
- 6: 0.38um GXT MIN. AT CONTACT, 1.27um MIN.MATTE TIN AT TAIL
- 7: 0.38um GXT MIN. AT CONTACT, GOLD FLASH AT TAIL
- 8: 0.76um GXT MIN. AT CONTACT, 1.27um MIN.MATTE TIN AT TAIL
- 9: 0.76um GXT MIN. AT CONTACT, GOLD FLASH AT TAIL
- PACKING STYLE
- T: TUBE
- D: TUBE + CAP
- C: TAPE & REEL + CAP
- Q: TAPE & REEL W/D CAP
- PIN NO. SEE TABLE
- SELECTED LOADED
- 0: FULLY LOADED, OTHER SEE SHEET 3 NOTE 2
- MATING LENGTH(DIM'A\*)
- 0: 3.05MM
- POST OPTION
- 0: WITHOUT POST
- 1: WITH POST

|             |  |            |  |             |  |            |  |                          |  |
|-------------|--|------------|--|-------------|--|------------|--|--------------------------|--|
| mat'l. code |  | surface    |  | tolerance   |  | projection |  | product family           |  |
|             |  | ISO 1302 ✓ |  | ISO 406 ISO |  | 1101       |  | MINITEK127®              |  |
| ltr         |  | ecn no     |  | dr          |  | date       |  | title                    |  |
|             |  |            |  |             |  |            |  | SHROUDED HDR VT SMT      |  |
|             |  | angles     |  | linear      |  | mm         |  |                          |  |
|             |  | 0±2°       |  | .0±.30      |  | scale 1:1  |  |                          |  |
|             |  | dr         |  | ZK HU       |  | 08/07/12   |  | dwg no                   |  |
|             |  | eng        |  | ZK HU       |  | 08/07/12   |  | sheet 2 of 3             |  |
|             |  | chr        |  | BIAN RICK   |  | 08/07/12   |  | 20021221                 |  |
|             |  | app        |  | BIAN RICK   |  | 08/07/12   |  | A3                       |  |
| sheet       |  | revision   |  |             |  |            |  | type                     |  |
| index       |  | sheet      |  |             |  |            |  | Product Customer Drawing |  |

Amphenol FCI

© 2016 AFCI



| PART NUMBER        | AMOUNT OF PINS | PIN FREE LEADED |
|--------------------|----------------|-----------------|
| 20021221-XX108XXLF | 7              | PIN #3          |
| 20021221-XX110XXLF | 9              | PIN #3          |
| 20021221-XX214XXLF | 13             | PIN #1          |
| 20021221-XX206XXLF | 5              | PIN #1          |
| 20021221-XX312XXLF | 11             | PIN #8          |
| 20021221-XX410XXLF | 9              | PIN #4          |

PART NUMBER 20021221-XX214XXLF  
REMOVE PIN 1 FOR REFERENCE

|                                       |  |                                       |  |                                       |  |                                       |  |                          |  |
|---------------------------------------|--|---------------------------------------|--|---------------------------------------|--|---------------------------------------|--|--------------------------|--|
| mat'l. code                           |  | surface                               |  | tolerance                             |  | projection                            |  | product family           |  |
| ISO 1302                              |  | ISO 406                               |  | ISO 1101                              |  | mm                                    |  | MINITEK127®              |  |
| tolerances unless otherwise specified |  | tolerances unless otherwise specified |  | tolerances unless otherwise specified |  | tolerances unless otherwise specified |  | title                    |  |
| angles                                |  | linear                                |  | mm                                    |  | scale 1:1                             |  | SHROUDED HDR VT SMT      |  |
| 0°±2'                                 |  | .0±.30                                |  | .00±.20                               |  | .000±.10                              |  | dwg no                   |  |
| dr                                    |  | ZK HU                                 |  | 08/07/12                              |  | Amphenol FCI                          |  | sheet 3 of 3             |  |
| eng                                   |  | ZK HU                                 |  | 08/07/12                              |  | 20021221                              |  | size A3                  |  |
| chr                                   |  | BIAN RICK                             |  | 08/07/12                              |  | type                                  |  | Product Customer Drawing |  |
| app                                   |  | BIAN RICK                             |  | 08/07/12                              |  | type                                  |  | Product Customer Drawing |  |
| sheet index                           |  | revision sheet                        |  |                                       |  |                                       |  |                          |  |