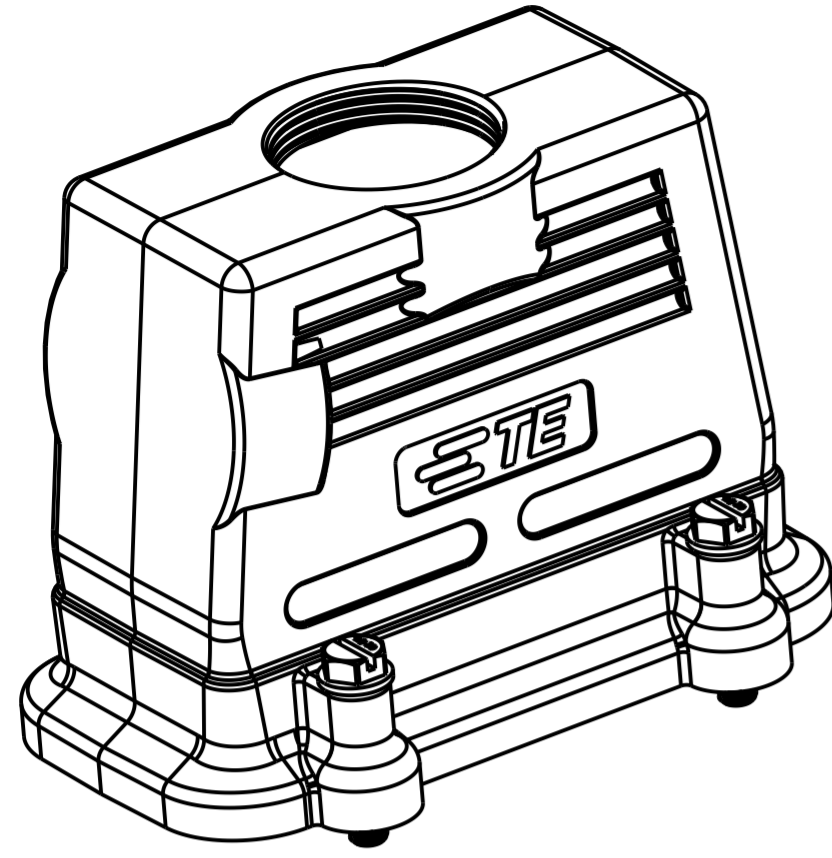
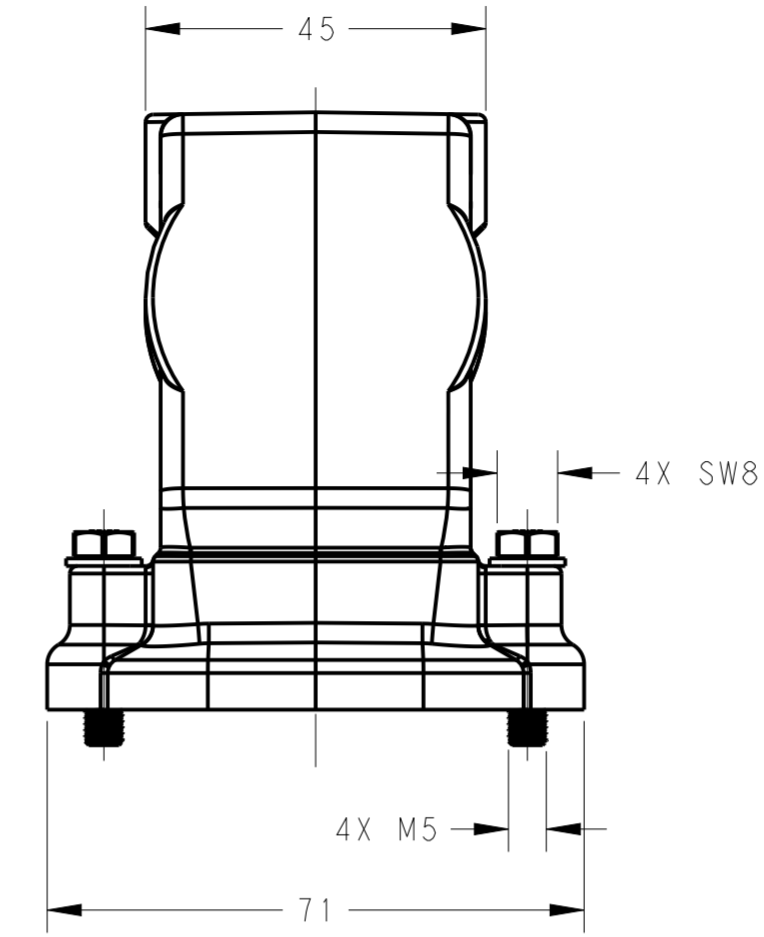
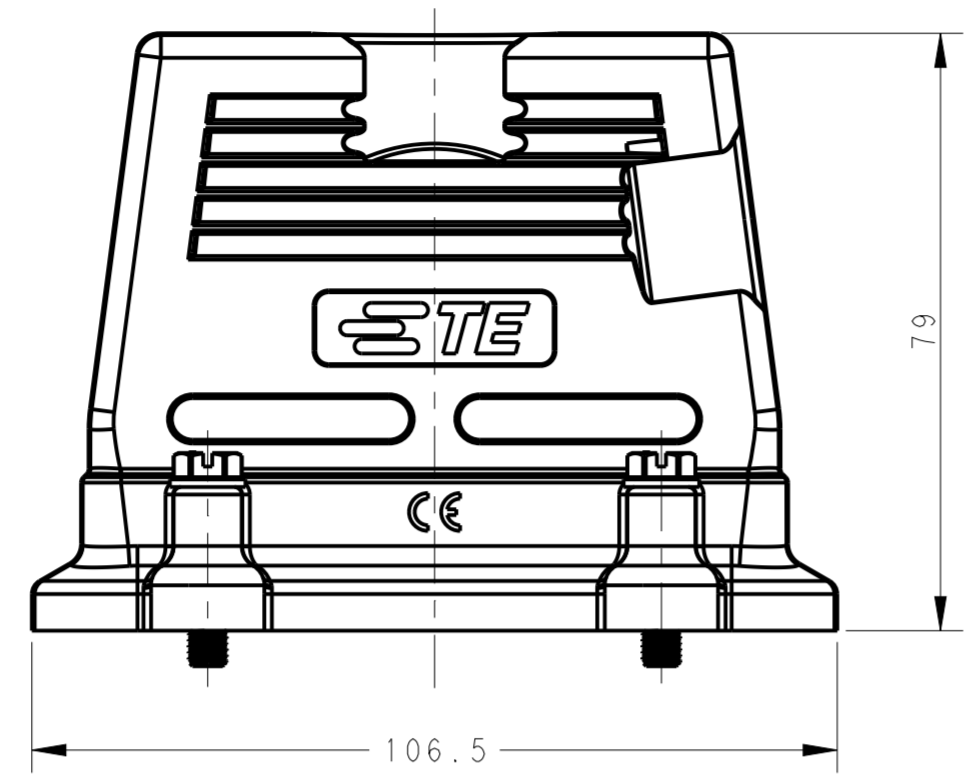


THIS DRAWING IS UNPUBLISHED. RELEASED FOR PUBLICATION 20
 © COPYRIGHT 20 BY - ALL RIGHTS RESERVED.

REVISIONS				
P	LTR	DESCRIPTION	DATE	APVD
A		INITIAL	19FEB2016	DW CW
B		ECR-20-008190	31JUL2020	WOR CW

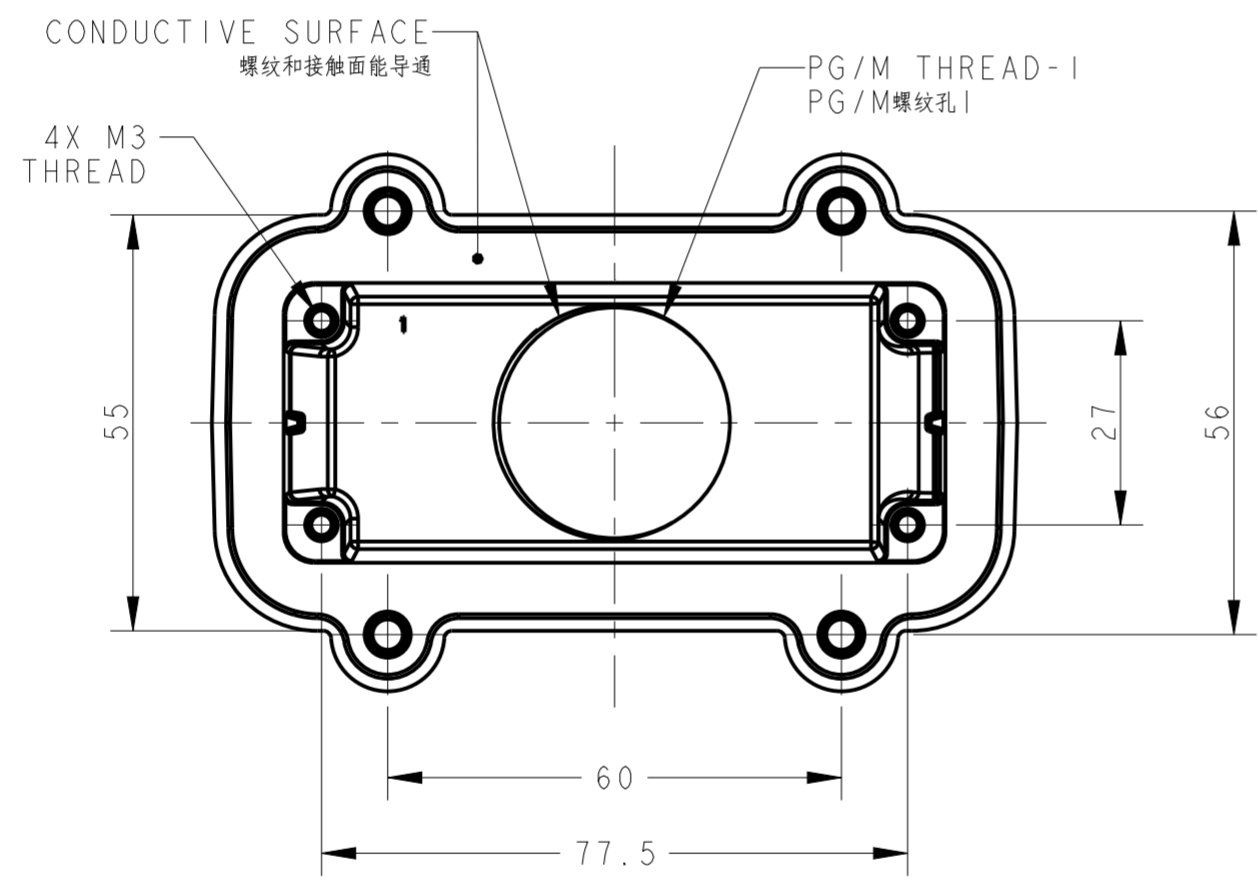


TYPE 1



NOTES:
 1. TECHNICAL CHARACTERISTICS:
 HOOD MATERIAL: DIE CAST ALUMINIUM ALLOY
 SURFACE: POWDER COATED, GREY
 DEGREE OF PROTECTION: IP67 (MATED)

注释:
 1. 技术参数:
 上壳材料: 铝合金
 表面处理: 粉末涂层, 灰色
 防护等级: IP67(配合)



TYPE 1: H16B HOOD, TOP ENTRY, HIGH CONSTRUCTION SCREW CONNECTION, CONTACT SURFACE CONDUCTIVE
 类型1: H16B上壳(顶出、高结构、螺丝连接、接触面导通)

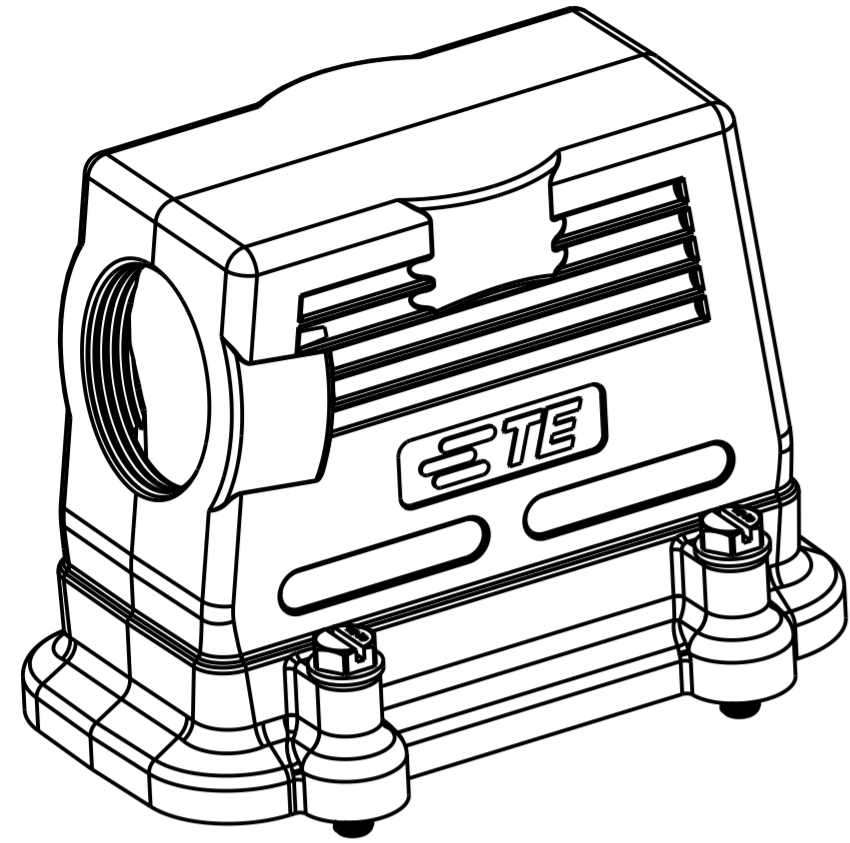
T1120165121-001	H16B-TSH-EMCS-N-PG21 H16B上壳(侧出PG21、高结构、螺丝连接、接触面导通)	-	PG21	TYPE 2 类型2
T1120165129-001	H16B-TSH-EMCS-N-PG29 H16B上壳(侧出PG29、高结构、螺丝连接、接触面导通)	-	PG29	
T1120165125-001	H16B-TSH-EMCS-N-M25 H16B上壳(侧出M25、高结构、螺丝连接、接触面导通)	-	M25	
T1120165132-001	H16B-TSH-EMCS-N-M32 H16B上壳(侧出M32、高结构、螺丝连接、接触面导通)	-	M32	
T1120165140-001	H16B-TSH-EMCS-N-M40 H16B上壳(侧出M40、高结构、螺丝连接、接触面导通)	-	M40	TYPE 1 类型1
T1130165121-001	H16B-TGH-EMCS-N-PG21 H16B上壳(顶出PG21、高结构、螺丝连接、接触面导通)	PG21	-	
T1130165129-001	H16B-TGH-EMCS-N-PG29 H16B上壳(顶出PG29、高结构、螺丝连接、接触面导通)	PG29	-	
T1130165125-001	H16B-TGH-EMCS-N-M25 H16B上壳(顶出M25、高结构、螺丝连接、接触面导通)	M25	-	
T1130165132-001	H16B-TGH-EMCS-N-M32 H16B上壳(顶出M32、高结构、螺丝连接、接触面导通)	M32	-	
T1130165140-001	H16B-TGH-EMCS-N-M40 H16B上壳(顶出M40、高结构、螺丝连接、接触面导通)	M40	-	
PART NUMBER 料号	PART DESCRIPTION 描述	PG/M THREAD-1 PG/M 螺纹孔1	PG/M THREAD-2 PG/M 螺纹孔2	TYPE 类型

THIS DRAWING IS A CONTROLLED DOCUMENT.

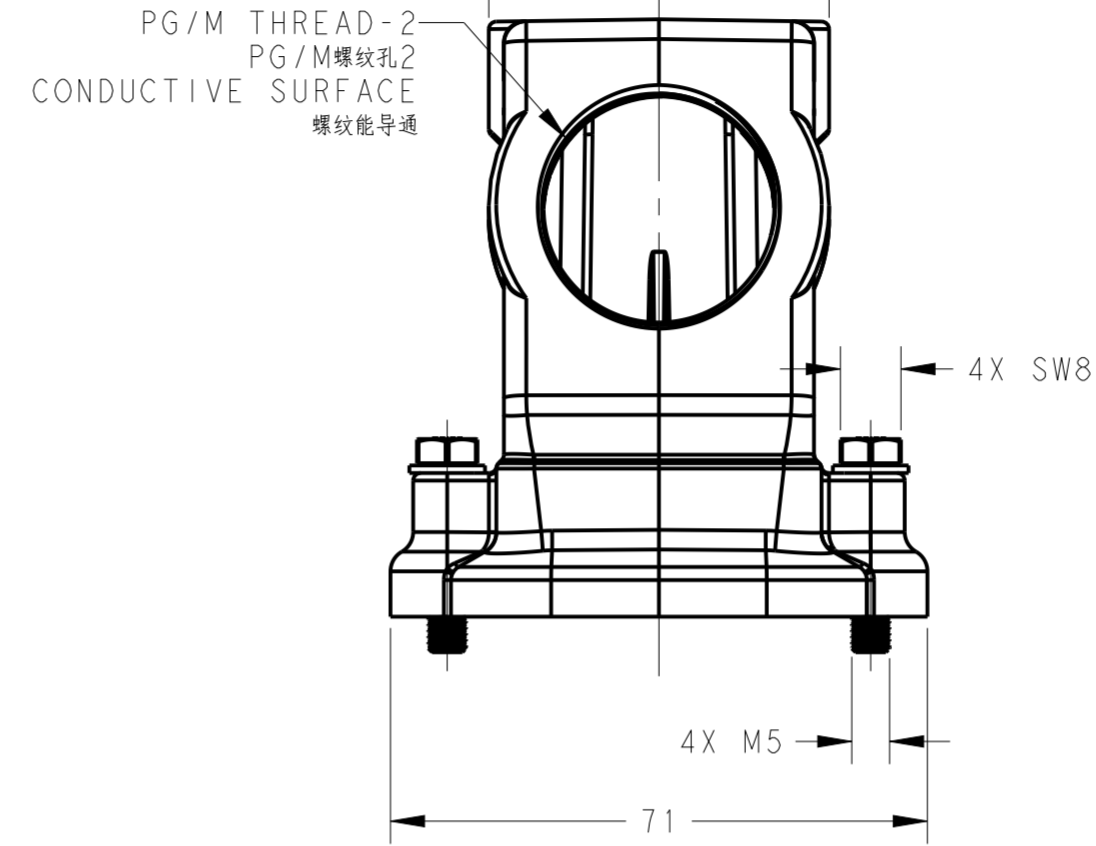
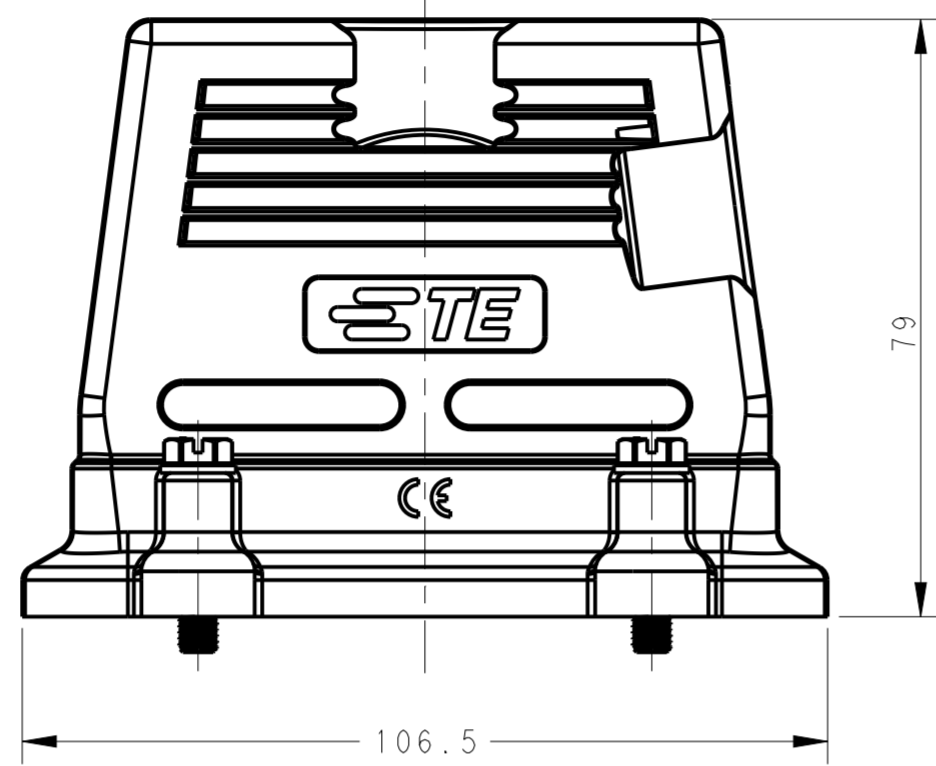
DWN DAVID WANG 19FEB2016	TE Connectivity NAME H16B-TSH/TGH-EMCS-N-PG/M PRODUCT SPEC 108-137015 APPLICATION SPEC 114-137015 WEIGHT - CUSTOMER DRAWING
CHK CHRIS WANG 19FEB2016	
APVD XIANG XU 19FEB2016	
SIZE CAGE CODE DRAWING NO RESTRICTED TO	
DIMENSIONS: mm TOLERANCES UNLESS OTHERWISE SPECIFIED: 0 PLC ± 1 PLC ± 2 PLC ± 3 PLC ± 4 PLC ± ANGLES ± FINISH -	SCALE 1:1 SHEET 1 OF 2 REV B

THIS DRAWING IS UNPUBLISHED. RELEASED FOR PUBLICATION 20
 © COPYRIGHT 20 BY - ALL RIGHTS RESERVED.

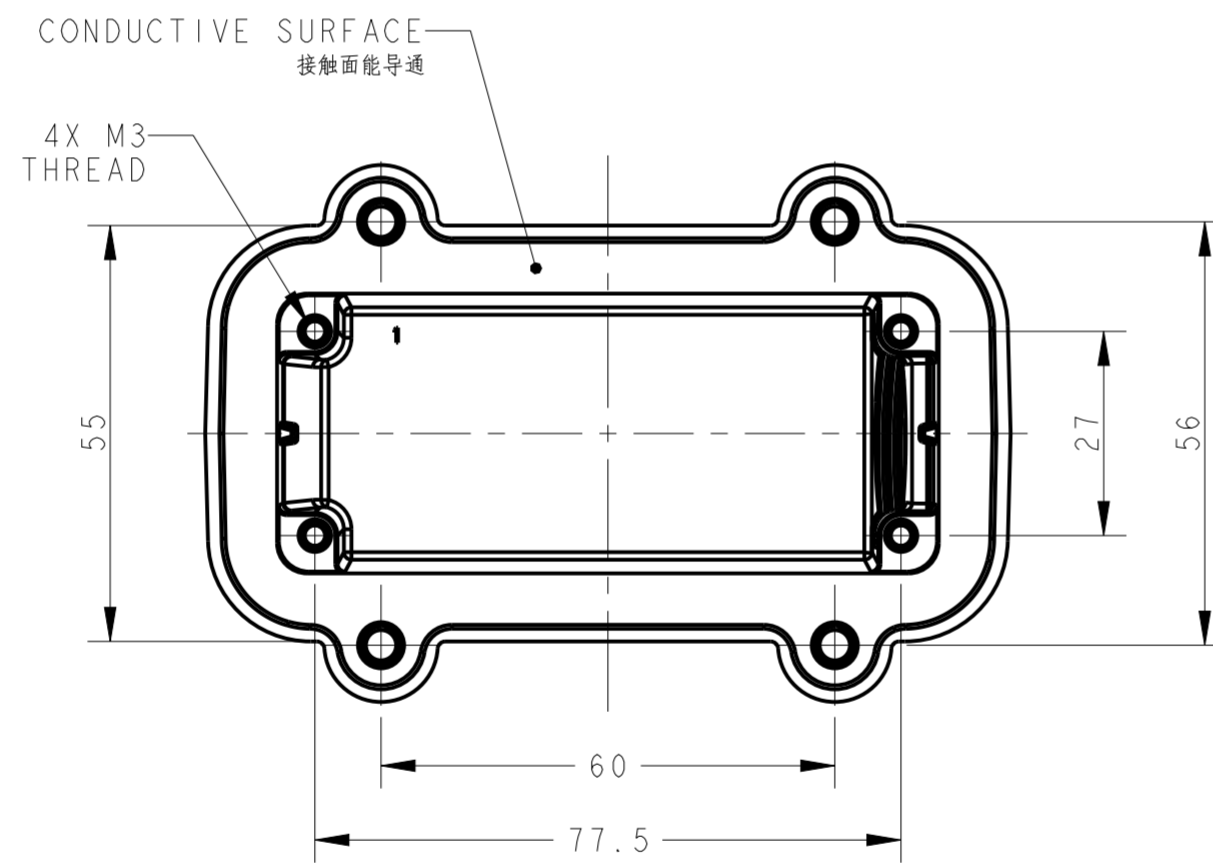
REVISIONS				
P	LTR	DESCRIPTION	DATE	APVD
-	-	SEE SHEET 1	-	-



TYPE 2



NOTES:
SEE SHEET 1



TYPE 2: HI16B HOOD, SIDE ENTRY, HIGH CONSTRUCTION SCREW CONNECTION, CONTACT SURFACE CONDUCTIVE
 类型2: HI16B上壳(侧出、高结构、螺丝连接、接触面导通)

THIS DRAWING IS A CONTROLLED DOCUMENT.		DWN 19FEB2016 DAVID WANG	TE Connectivity														
DIMENSIONS:		CHK 19FEB2016 CHRIS WANG															
TOLERANCES UNLESS OTHERWISE SPECIFIED:		APVD 19FEB2016 XIANG XU															
mm		PRODUCT SPEC 108-137015															
<table border="1"> <tr><td>0 PLC</td><td>±</td></tr> <tr><td>1 PLC</td><td>±</td></tr> <tr><td>2 PLC</td><td>±</td></tr> <tr><td>3 PLC</td><td>±</td></tr> <tr><td>4 PLC</td><td>±</td></tr> <tr><td>ANGLES</td><td>±</td></tr> <tr><td>FINISH</td><td>±</td></tr> </table>		0 PLC	±	1 PLC	±	2 PLC	±	3 PLC	±	4 PLC	±	ANGLES	±	FINISH	±	APPLICATION SPEC 114-137015	NAME H16B-TSH/TGH-EMCS-N-PG/M
0 PLC	±																
1 PLC	±																
2 PLC	±																
3 PLC	±																
4 PLC	±																
ANGLES	±																
FINISH	±																
MATERIAL	-	WEIGHT	SIZE CAGE CODE DRAWING NO RESTRICTED TO														
-	-	-	A200779 C-T11X01651XX001														
CUSTOMER DRAWING			SCALE 1:1 SHEET 2 OF 2 REV B														