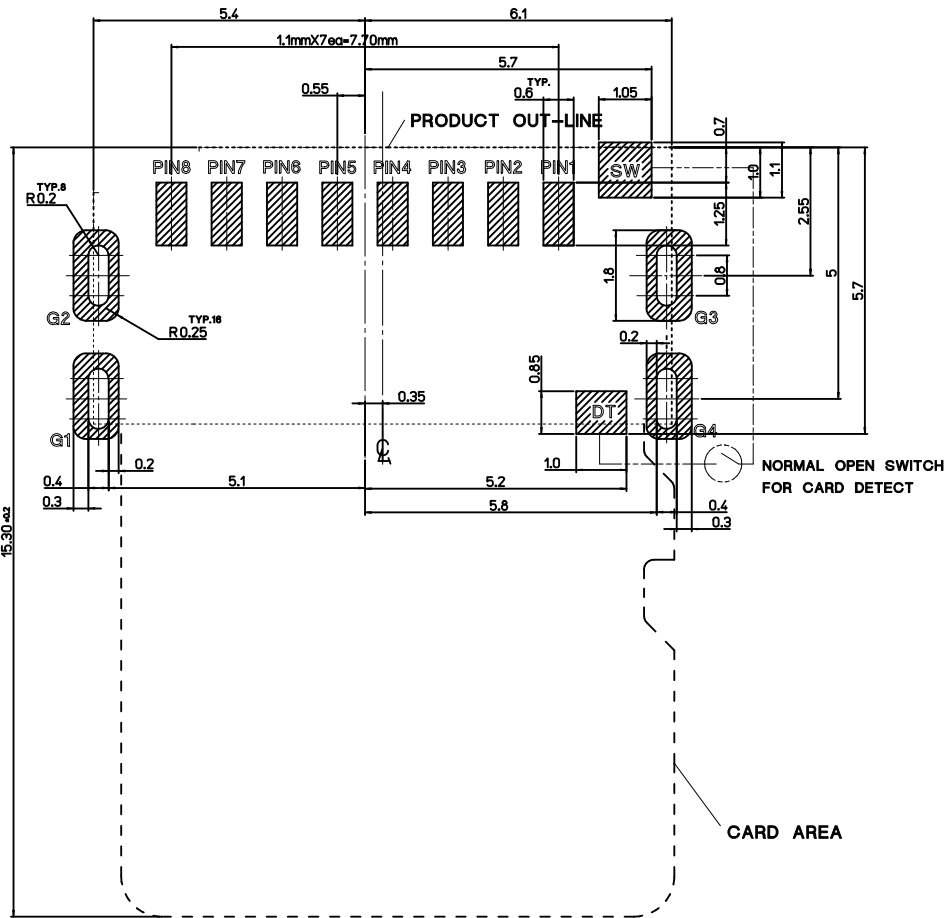


NOTES

- MATERIALS:**
 - HOUSING : HIGH TEMPERATURE THERMOPLASTIC,UL 94V-0,BLACK
 - CONTACT TERL & SWITCH TERL & DETECT TER : PHOS-BRONZE
 - METAL SHELL : STAINLESS STEEL
- FINISHES:**
 - CONTACT TERL : 1.25-5.5 MICRON NICKEL UNDER-PLATED
MIN. 0.2 MICRON GOLD ON CONTACT AREA,
MIN. 0.05 MICRON GOLD ON SOLDER AREA
 - METAL SHELL: 1.25-3.0 MICRON NICKEL OVERALL
 - DETECT TERL : 1.25-5.5 MICRON NICKEL UNDER-PLATED
MIN.0.1 MICRON GOLD ON CONTACT AREA,
MIN. 0.05 MICRON GOLD ON OTHER AREA.
 - SWITCH TERL : 1.25-5.5 MICRON NICKEL UNDER-PLATED
MIN. 0.1 MICRON GOLD MIN ON CONTACT AREA,
MIN. 0.05 MICRON GOLD ON OTHER AREA
- PRODUCT SPECIFICATION :** RPS-104070 -001
- COPLANARITY OF SOLDER TAILS :** 0.08mm MAX.(BEFORE & AFTER REFLOW)
MISALIGNMENT OF SOLDER TAIL FROM 'B'
UPPER DIRECTION 0.05 MAX., LOWER DIRECTION 0.1MAX.
- PACKAGING SPECIFICATION :** RPK-104070 -001
- IS SAMSUNG'S CTO DIMENSION EQUAL TO MOLEX MAJOR QUALITY SYMBOLS'

1040700811	104070-0811
MATERIAL NO.	ORDER NO.

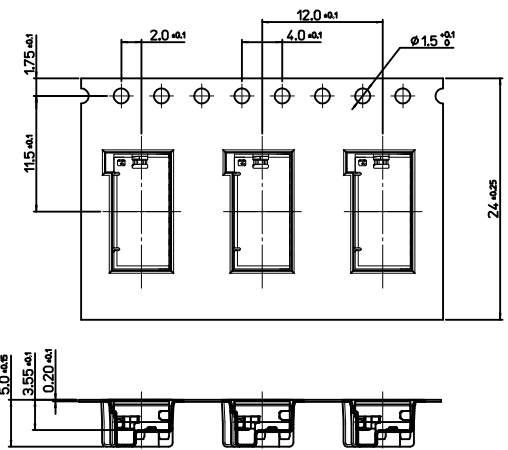
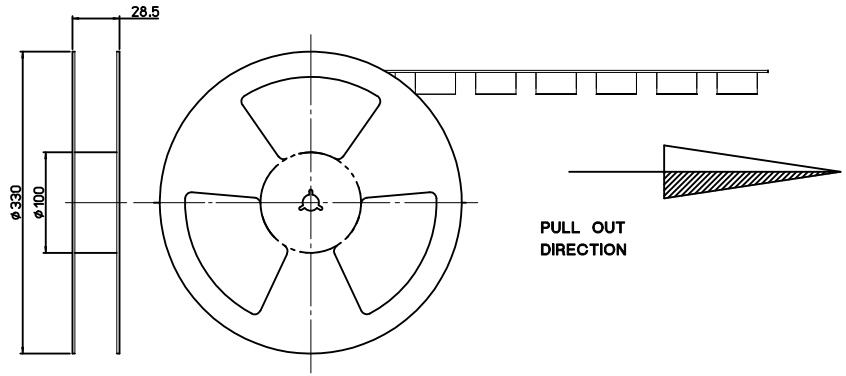
<p>NEW RELEASED EC NO: KOR2011-0052 DRWN:HYOU 2010/11/26 CHKD:YSOOKIM 2010/11/26 APPR:YUNSIKKIM 2010/11/26</p>	<p>QUALITY SYMBOLS</p> <p>▽=0 ◻=0</p>	<p>GENERAL TOLERANCES (UNLESS SPECIFIED)</p> <table border="1"> <tr> <td></td> <td>mm</td> <td>INCH</td> </tr> <tr> <td>4 PLACES</td> <td>± ---</td> <td>± ---</td> </tr> <tr> <td>3 PLACES</td> <td>± ---</td> <td>± ---</td> </tr> <tr> <td>2 PLACES</td> <td>± 0.10</td> <td>± ---</td> </tr> <tr> <td>1 PLACE</td> <td>± 0.15</td> <td>± ---</td> </tr> </table>		mm	INCH	4 PLACES	± ---	± ---	3 PLACES	± ---	± ---	2 PLACES	± 0.10	± ---	1 PLACE	± 0.15	± ---	<p>DIMENSION STYLE</p> <p>MM ONLY</p>	<p>SCALE</p> <p>10:1</p>	<p>DESIGN UNITS</p> <p>METRIC</p>	<p>THIRD ANGLE PROJECTION</p>
		mm	INCH																		
	4 PLACES	± ---	± ---																		
	3 PLACES	± ---	± ---																		
2 PLACES	± 0.10	± ---																			
1 PLACE	± 0.15	± ---																			
<p>APPROVED BY</p> <p>Y.SOO.KIM</p>	<p>DATE</p> <p>2009/11/25</p>	<p>TITLE</p> <p>MICROSD HEADER T-3.35, PUSH PULL TYPE, W-DT 4-DIP</p>	<p>MOLEX</p>	<p>MOLEX INCORPORATED</p>	<p>DOCUMENT NO.</p> <p>RSD-104070-001</p>	<p>SHEET NO.</p> <p>1 OF 3</p>															
<p>DRAFT WHERE APPLICABLE MUST REMAIN WITHIN DIMENSIONS</p>	<p>SIZE</p> <p>A3</p>	<p>SEE TABLE</p>	<p>THIS DRAWING CONTAINS INFORMATION THAT IS PROPRIETARY TO MOLEX INCORPORATED AND SHOULD NOT BE USED WITHOUT WRITTEN PERMISSION</p>																		
<p>REV</p> <p>A</p>	<p>DESCRIPTION</p>																				



PIN NUMBER	DESCRIPTION
P1	DAT2
P2	CD/DAT3
P3	CMD
P4	VDD
P5	CLK
P6	VSS
P7	DAT0
P8	DAT1
G1	GND
G2	GND
G3	GND
G4	GND
DT	DET
SW	SWT

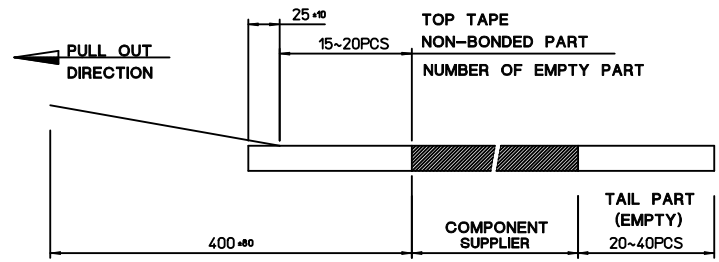
RECOMMENDED PCB PATTERN LAYOUT
TOLERANCE : ±0.05

NEW RELEASED IEC NO: KOR2011-0052 DRWN: IHYOU 2010/11/26 CHKD: YSOOKIM 2010/11/26 APPR: YUNSIKKIM 2010/11/26 REV: A	QUALITY SYMBOLS ▽=0 ◻=0	GENERAL TOLERANCES (UNLESS SPECIFIED) <table border="1"> <thead> <tr> <th></th> <th>mm</th> <th>INCH</th> </tr> </thead> <tbody> <tr> <td>4 PLACES</td> <td>± ---</td> <td>± ---</td> </tr> <tr> <td>3 PLACES</td> <td>± ---</td> <td>± ---</td> </tr> <tr> <td>2 PLACES</td> <td>± 0.10</td> <td>± ---</td> </tr> <tr> <td>1 PLACE</td> <td>± 0.15</td> <td>± ---</td> </tr> </tbody> </table>		mm	INCH	4 PLACES	± ---	± ---	3 PLACES	± ---	± ---	2 PLACES	± 0.10	± ---	1 PLACE	± 0.15	± ---	DIMENSION STYLE MM ONLY	SCALE 10:1	DESIGN UNITS METRIC	THIRD ANGLE PROJECTION
		mm	INCH																		
	4 PLACES	± ---	± ---																		
	3 PLACES	± ---	± ---																		
2 PLACES	± 0.10	± ---																			
1 PLACE	± 0.15	± ---																			
DRAFT WHERE APPLICABLE MUST REMAIN WITHIN DIMENSIONS		APPROVED BY Y.SOO.KIM 2009/11/25	DATE 2009/11/25	TITLE MICROSD HEADER T-3.35, PUSH PULL TYPE, W-DT 4-DIP																	
		MATERIAL NO. ENTER PART	MOLEX INCORPORATED	DOCUMENT NO. RSD-104070-001	SHEET NO. 2 OF 3																
		THIS DRAWING CONTAINS INFORMATION THAT IS PROPRIETARY TO MOLEX INCORPORATED AND SHOULD NOT BE USED WITHOUT WRITTEN PERMISSION																			

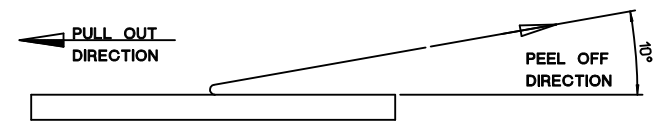


NOTES

- 1. QUANTITY OF CONNECTORS : 1,000PCS/REEL
- 2. LEAD LENGTH



- 3. PEELING OFF FORCE OF COVER TAPE : 0.1N~0.59N(10.2GF~60GF)
(PEELING DIRECTION AS SHOW IN FOLLOW FIG.)
- PEELING OFF SPEED : 300mm/Min.(Ref.)



NEW RELEASED EC NO: KOR2011-0052 DRWN:HYOU 2010/11/26 CHKD:YSOOKIM 2010/11/26 APPR:YUNSIKKIM 2010/11/26	DESCRIPTION A	QUALITY SYMBOLS	GENERAL TOLERANCES (UNLESS SPECIFIED)	DIMENSION STYLE	SCALE	DESIGN UNITS	THIRD ANGLE PROJECTION	
		▼ = 0 ◻ = 0	mm INCH 4 PLACES ± --- ± --- 3 PLACES ± --- ± --- 2 PLACES ± 0.15 ± --- 1 PLACE ± 0.25 ± --- ANGULAR ± 1 °	MM ONLY	10:1	METRIC		
			DRAFT WHERE APPLICABLE MUST REMAIN WITHIN DIMENSIONS	DRAWN BY: S.H.CHU DATE: 2009/11/25 CHECKED BY: DATE:	TITLE	MICROSD HEADER T-3.35, PUSH PULL TYPE, W-DT 4-DIP		
				APPROVED BY: Y.SOO.KIM DATE: 2009/11/25 MATERIAL NO.	MOLEX INCORPORATED ENTER PART	DOCUMENT NO.	RSD-104070-001	
				SIZE: A3	THIS DRAWING CONTAINS INFORMATION THAT IS PROPRIETARY TO MOLEX INCORPORATED AND SHOULD NOT BE USED WITHOUT WRITTEN PERMISSION			
							SHEET NO. 3 OF 3	