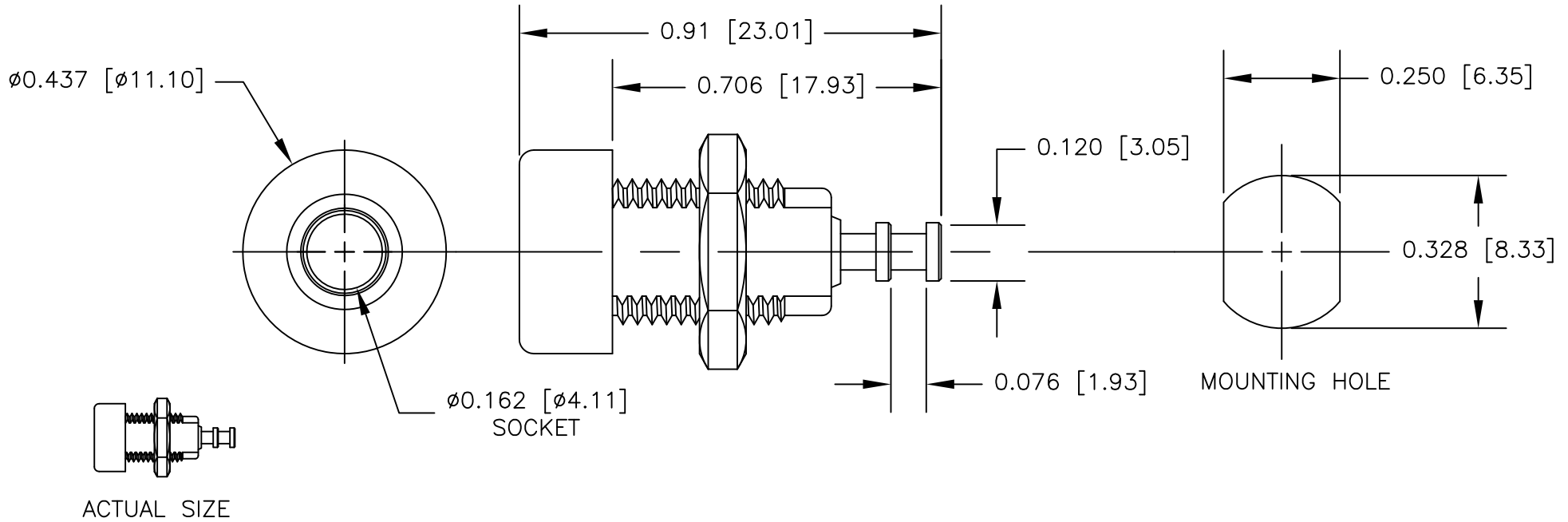


NOTES: UNLESS OTHERWISE SPECIFIED

- CONSTRUCTION:
HANDLE: NYLON. AVAILABLE IN TEN COLORS.
SOCKET: NICKEL PLATED BRASS.
- PERFORMANCE:
MAXIMUM CURRENT: 15 AMPS
MAXIMUM VOLTAGE: 7000 VRMS
MAXIMUM TEMPERATURE: 200°F (93°C)

REVISIONS			
LTR	DESCRIPTION	DATE	APPROVED



		UNLESS OTHERWISE SPECIFIED DIMENSIONS ARE IN INCHES TOLERANCES ARE: FRACTIONS DECIMALS ANGLES ± .XX ± ± .XXX ±	CONTRACT NO.		E-Z-HOOK DIVISION OF TEKTEST INC. ARCADIA, CA 91006 U.S.A.			
			APPROVALS	DATE				
		MATERIAL SEE NOTE.	DRAWN	R.L.	3/09	DESCRIPTION		
			APPROVED BY	STD BANANA SOCKET PANEL MOUNT				
		FINISH SEE NOTE.			SIZE	CODE IDENT NO.	DRAWING NO.	REV.
NEXT ASSY	USED ON				A	08505	9284	
APPLICATION		DO NOT SCALE DRAWING		SCALE		3:1	SHEET 1 OF 1	

THE INFORMATION CONTAINED IN THIS DOCUMENT IS PROPRIETARY TO E-Z-HOOK. THE INFORMATION IS NOT TO BE REPRODUCED WITHOUT PRIOR WRITTEN PERMISSION OF E-Z-HOOK, DIV. OF TEKTEST INC. MAXIMUM TESTED RATINGS IN A HANDS-FREE CONTROLLED ENVIRONMENT. MAXIMUM RATINGS ARE NOT TO BE USED CONCURRENTLY.