

MATERIALS AND FINISHES:

SMA JACK STR CONNECTOR:

BODY, CONTACT, CRIMP TUBE: BRASS
PLATED GOLD

JAM NUT: BRASS
PLATED GOLD

LOCKWASHER: PHOSPHOR BRONZE
PLATED GOLD

CONNECTOR:

MHF® I LK

MATED HEIGHT: 2.90MM MAX

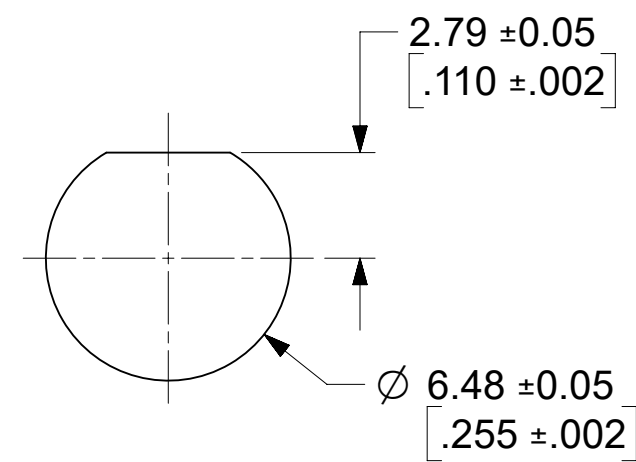
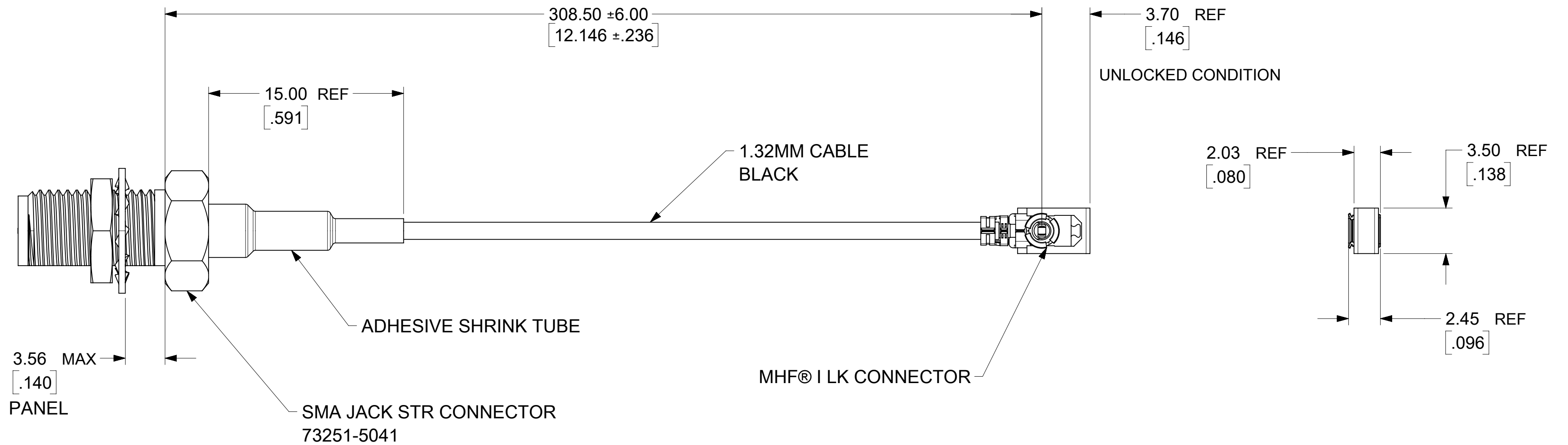
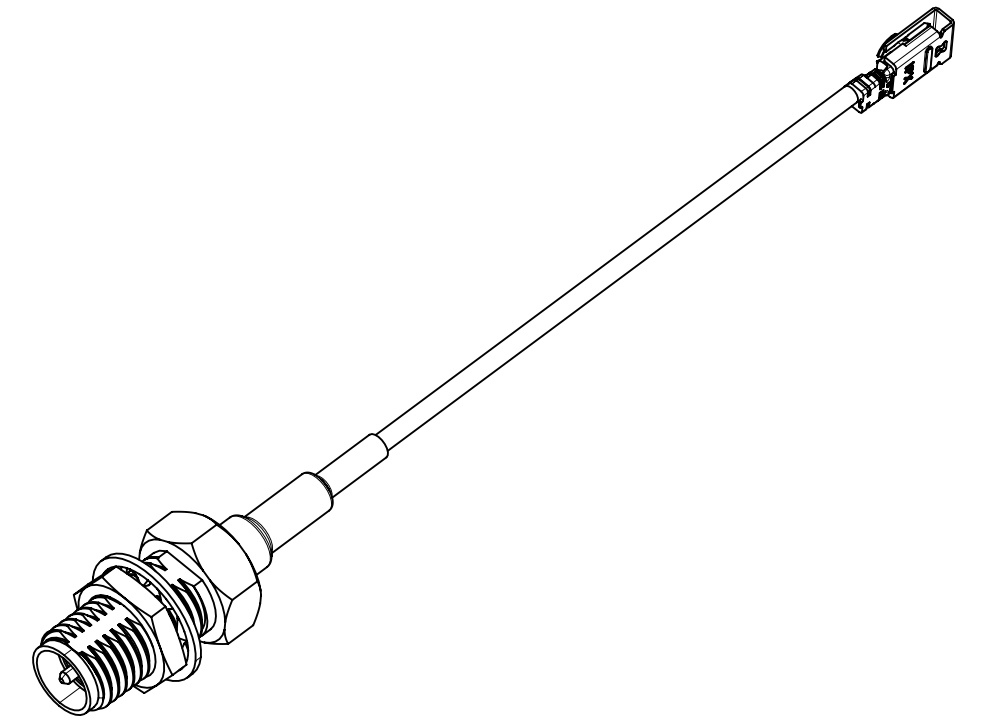
CABLE: 1.32MM CABLE BLACK

NOTES:

PACKAGING BY PLASTIC BAG

PERFORMANCE REQUIREMENTS:

1. FREQUENCY: DC~ 6GHz
2. IMPEDANCE: 50 OHMS
3. TEST 100% CONTINUITY
4. TEST 100% HI-POT: AC 350 V@0.5mA



PANEL CUT-OUT
MAX PANEL THICKNESS
3.30MM (1.30)

PART # 73230-6210

| | | | | | | | | | | |
|---|---------------------------------------|-------|--|------------|--------|-----------------|----------------|----------|----------|--------------|
| THIS DRAWING CONTAINS INFORMATION THAT IS PROPRIETARY TO MOLEX ELECTRONIC TECHNOLOGIES, LLC AND SHOULD NOT BE USED WITHOUT WRITTEN PERMISSION | | | | | | | | | | |
| FUNCTIONAL SYMBOLS | DIMENSION UNITS | SCALE | CURRENT REV DESC: NEW RELEASE | | | | | | | |
| FA = 0 | mm | NTS | molex CA, SMA JACK RP STR TO MHF® I LK WITH 1.32MM CABLE EWR#15295-A PRODUCT CUSTOMER DRAWING | | | | | | | |
| EA = 0 | GENERAL TOLERANCES (UNLESS SPECIFIED) | | | | | | | | | |
| EP = 0 | ANGULAR TOL ± ° | | | | | | | | | |
| DIVISIONAL SYMBOLS | 4 PLACES ± | | | | | | | | | |
| | 3 PLACES ± | | EC NO: 721426 | 2022/07/11 | | | | | | |
| | 2 PLACES ± | | DRWN: JCHEN108 | 2022/09/19 | | | | | | |
| | 1 PLACE ± | | CHK'D: MYLU07 | 2022/09/22 | | | | | | |
| | 0 PLACES ± | | APPR: LCHEN03 | | | | | | | |
| DRAFT WHERE APPLICABLE MUST REMAIN WITHIN DIMENSIONS | | | THIRD ANGLE PROJECTION | DRAWING | SERIES | MATERIAL NUMBER | CUSTOMER | DOC TYPE | DOC PART | REVISION |
| | | | | C-SIZE | 73230 | 73230-6210 | GENERAL MARKET | PSD | 000 | A |
| | | | | | | | | | | SHEET NUMBER |
| | | | | | | | | | | 1 OF 1 |