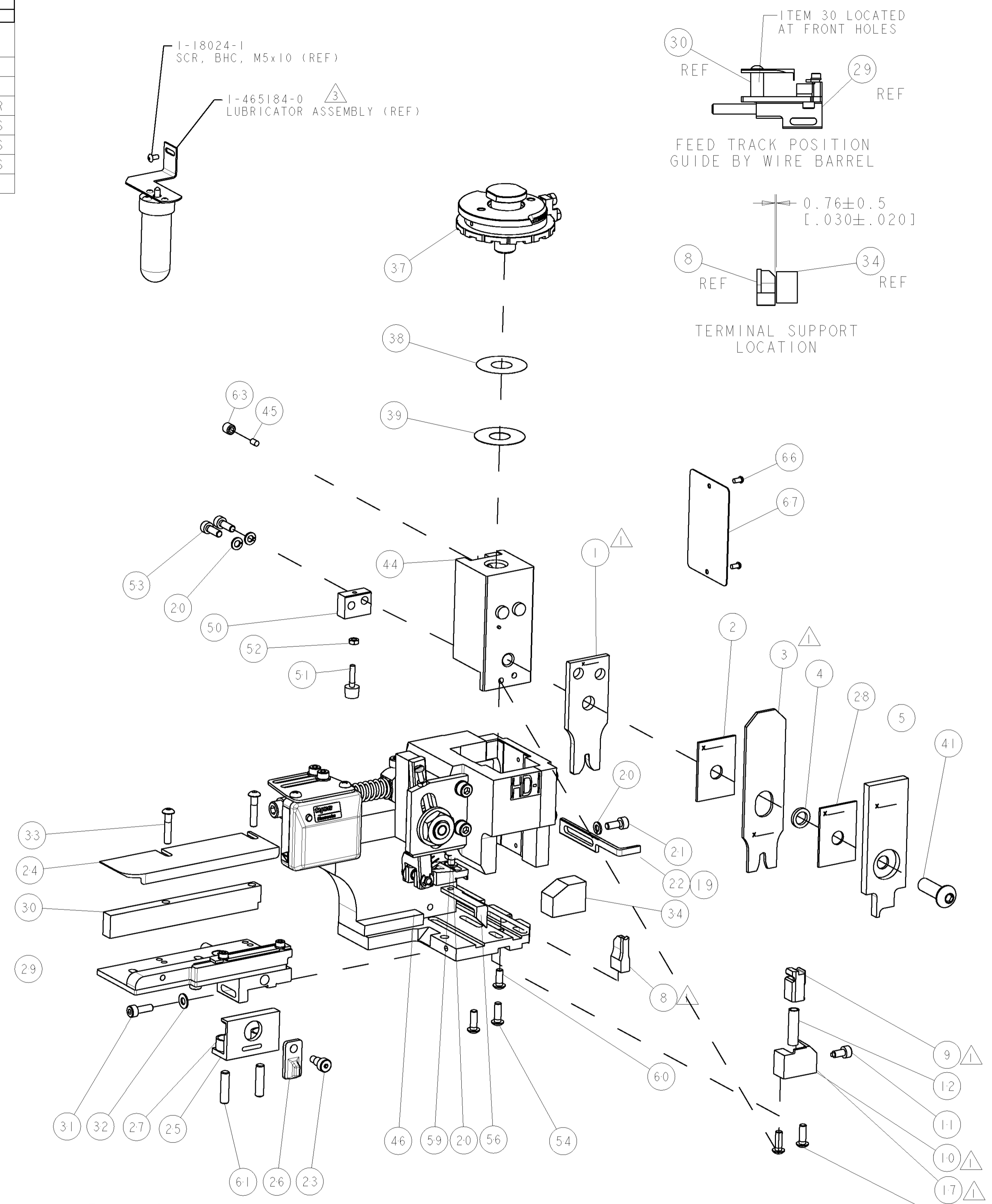


PART NUMBER	REV	TERMINATOR	FEED TYPE	DESCRIPTION
1528640-1	B	LEADMAKER	MECH POST FEED	CUTS CARRIER
1528640-2	B	BENCH	MECH PRE FEED	CUTS CARRIER
1528640-6	B	LEADMAKER	MECH POST FEED	CONTINUOUS CARRIER
7-1528640-1	B	LEADMAKER	MECH POST FEED	-1 AND SPARE PARTS
7-1528640-2	B	BENCH	MECH PRE FEED	-2 AND SPARE PARTS
7-1528640-6	B	LEADMAKER	MECH POST FEED	-6 AND SPARE PARTS
7-1528640-7	A	-	-	SPARE PARTS KIT

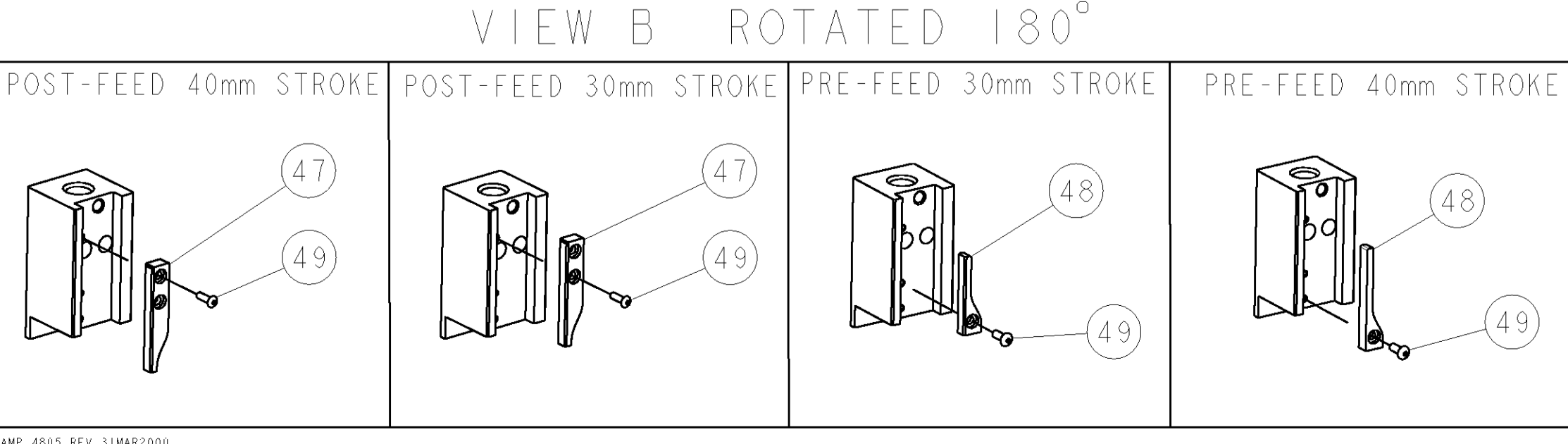
CRIMP	SIZE	TYPE	RANGE
WIRE	2.79 [1.110 IN]	F	0.85-2.00mm ²
INSUL	4.06 [1.160 IN]	OV	1.15-1.90 [1.045-.075 IN]
WIRE STRIP LENGTH 4.80-5.60 [1.189-.220 IN]		APPL INSTRUCTIONS 408-8322 & 408-8490	
TERMINAL APPL SPEC	-	FEED	15.00 [1.591 IN]

TE TERM PN	MANUF TERM PN
1949032-1	8100-1236

WIRE SIZE	CRIMP HEIGHT	REF SETTING
2.00 mm ²	1.91 ±0.05 [1.075 ±.002 IN]	B6
1.50 mm ²	1.75 ±0.05 [1.069 ±.002 IN]	C7
1.00 mm ²	1.60 ±0.05 [1.063 ±.002 IN]	D9
0.75 mm ²	1.52 ±0.05 [1.060 ±.002 IN]	E6



*** WARNING**
ON INSTALLATION, SET WIRE DISC TO LARGEST WIRE SIZE SETTING. USE OF SETTINGS BELOW MIN. REQUIRED CRIMP HEIGHT SETTING WILL CAUSE DAMAGE TO CRIMP TOOLING.



-77	-76	-72	-71	-6	-2	-1	PART NO	DESCRIPTION	ITEM NO
-	-	-	-	-	-	-	-	-	84
-	-	-	-	-	-	-	-	-	83
-	-	-	-	-	-	-	-	-	82
-	-	-	-	-	-	-	-	-	81
-	-	-	-	-	-	-	-	-	80
-	-	-	-	-	-	-	-	-	79
-	-	-	-	-	-	-	-	-	78
-	-	-	-	-	-	-	-	-	77
-	-	-	-	-	-	-	-	-	76
-	-	-	-	-	-	-	-	-	75
-	-	-	-	-	-	-	-	-	74

SET UP GAGE
458637-3

LOC	DIST	REV	DATE	BY	APPV
A	66				

REV		DESCRIPTION	DATE	BY	APPV
A	1	SEE ECO-06-010037	28APR2006	DP	MC
B	1	ECR-07-021014	04SEP2007	MY	GB

REV	DESCRIPTION	ITEM NO	
-	-	73	
-	-	72	
-	1338705-3	DOCUMENTATION PACKAGE	71
-	-	70	
-	-	69	
-	-	68	
-	461264-5	PLATE, IDENTIFICATION	67
-	21017-2	SCREW, DRIVE	66
-	-	65	
-	-	64	
-	3-18031-0	SCR, SET, CUP POINT M6 X 6.0	63
-	-	62	
-	2-18032-5	SCR, SET, FLT POINT M5 X 20.0	61
-	18024-7	SCR, BTN SKT HD CAP (M4 X 10.0)	60
-	5-18022-2	SCR, HEX HD CAP M4 X 8.0	59
-	-	58	
-	-	57	
-	1338685-1	PAWL, FEED	56
-	-	55	
-	18024-8	SCR, BTN SKT HD CAP (M4 X 12.0)	54
-	1-18023-2	SCR, SKT HD CAP M4 X 12.0	53
-	18030-1	NUT, HEX, REG M3	52
-	811242-6	BUMPER, HOLD DOWN	51
-	690753-2	SPACER, TONKER	50
-	18024-3	SCR, BTN SKT HD CAP (M3 X 10.0)	49
-	1338675-1	CAM, UNIVERSAL PRE FEED	48
-	1338676-1	CAM, UNIVERSAL POST-FEED	47
-	1320999-3	APPLICATOR SUBASSEMBLY, HDI	46
-	690191-1	PLUG, NYLON	45
-	1338660-1	RAM	44
-	-	43	
-	-	42	
-	2-18024-6	SCR, BTN SKT HD CAP (M8 X 25.0)	41
-	-	40	
-	690125-1	SHIM SUB-ASSY	39
-	469367-4	SHIM	38
-	879103-2	FINE ADJUST HEAD SUBASSY	37
-	-	36	
-	-	35	
-	1320934-6	SUPPORT, TERMINAL	34
-	1-18024-0	SCR, BTN SKT HD CAP (M4 X 20.0)	33
-	18027-2	WASHER, FLAT, REG M4	32
-	1-18023-2	SCR, SKT HD CAP M4 X 12.0	31
-	1-1320908-0	SPACER, STRIP GUIDE	30
-	1633073-1	STRIP GUIDE ASSEMBLY	29
-	1-455888-0	SPACER, CRIMPER	28
-	1-22284-0	SPRING, COMPRESSION	27
-	356835-1	LEVER, DRAG RELEASE	26
-	240792-1	DRAG, TERMINAL	25
-	1320928-2	PLATE, STRIP GUIDE	24
-	980371-4	SCR, SKT HD SHLDR 5.0 DIA X 6.0	23
-	690472-2	STRIPPER	22
-	1-18023-1	SCR, SKT HD CAP M4 X 10.0	21
-	18025-2	WASHER, SPRG LOCK, REG M4	20
-	690472-1	STRIPPER	19
-	-	18	
-	1338684-1	HOLDER, SHEAR, NO-CUT	17
-	-	16	
-	-	15	
-	-	14	
-	-	13	
-	3-22280-3	SPRING, COMPRESSION	12
-	356885-4	STOP, SHEAR	11
-	1320921-1	SHEAR HOLDER, FRONT, CUT	10
-	454276-1	FLOATING SHEAR, FRONT	9
-	1-1633139-5	ANVIL, COMBINATION	8
-	-	7	
-	-	6	
-	1-455889-4	DEPRESSOR, SHEAR	5
-	238011-7	BLOCK, CRIMPER SPACER	4
-	854830-6	CRIMPER, INSULATION SPECIAL	3
-	1-455888-2	SPACER, CRIMPER	2
-	1-456408-8	CRIMPER, WIRE PREMIUM	1

LOC	DIST	REV	DATE	BY	APPV
A	66				

REV	DESCRIPTION	ITEM NO
-	-	84
-	-	83
-	-	82
-	-	81
-	-	80
-	-	79
-	-	78
-	-	77
-	-	76
-	-	75
-	-	74