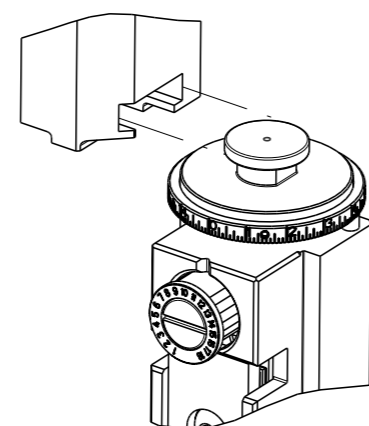


8	7	6	5	4	3	2	1
THIS DRAWING IS UNPUBLISHED.		RELEASED FOR PUBLICATION		20			
COPYRIGHT 20 BY TYCO ELECTRONICS CORPORATION. ALL RIGHTS RESERVED.							
PART NUMBER	REVISION	DESCRIPTION	FEED TYPE				
2151284-2	G	FINE CRIMP HEIGHT ADJUST	PNEUMATIC				
7-2151284-2	G	PNEUMATIC AND CRIMP TOOLING KIT	PNEUMATIC				
7-2151284-7	A	CRIMP TOOLING KIT	-				

ATLANTIC VERSION TERMINATOR INTERFACE ADAPTER



APPLICATOR DATA		
CRIMP	SIZE	TYPE
WIRE	4.57 mm [.180]	F
INSUL	6.35 mm [.250]	F
APPLICATOR INSTRUCTIONS 408-35042		

TERMINAL DATA: TE TERMINAL		TE CRIMP SPECIFICATION	
TERMINAL NAME: MAXI-POWER-TIMER CONTACT			
WIRE STRIP LENGTH		INSULATION DIAMETER RANGE	
7.00-7.80 mm [.276-.307 IN]		Ø4.00-5.20 mm [.157-.205 IN]	
TERMINAL APPLICATION SPECIFICATION	114-18075		
TERMINALS APPLIED			
TE TERMINAL	TE TERMINAL	TE TERMINAL	TE TERMINAL
962930-1	1-962930-6	2-962930-1	9-962930-1
967228-1	2-967228-1	1-1719952-6	

WIRE SIZE	CRIMP HEIGHT mm [INCH]	CRIMP HEIGHT REFERENCE SETTING
6.00mm2	3.08+/-0.05 [.121+/- .002]	3.5
4.00mm2	2.74+/-0.05 [.108+/- .002]	6.9

- RECOMMENDED SPARE PARTS
- REFER TO SUPPLIED INSTRUCTION SHEET FOR CLEANING, LUBRICATION AND STORAGE OF APPLICATOR.
- APPLY PART NUMBER 1-23419-5 LOCTITE TO THREADS OF ITEMS 180. APPLY PART NUMBER 2-23419-6 LOCTITE TO THREADS OF ITEM 242.
- CRIMP HEIGHT REFERENCE SETTING WAS THE SETTING USED WHEN THE APPLICATOR WAS QUALIFIED AT THE FACTORY. ADJUSTMENT MAY BE NECESSARY WHEN RUNNING APPLICATOR IN THE FIELD.
- TERMINAL PITCH NOT COMPATIBLE WITH MECHANICAL FEED.
- 6. UNLESS SPECIFIED OTHERWISE TORQUE VALUES SHALL BE USED PER DOCUMENT, 101-35000.

***WARNING**
ON INSTALLATION, SET WIRE DISC TO CRIMP HEIGHT REFERENCE SETTING FOR LARGEST WIRE SIZE. CRIMP HEIGHT REFERENCE SETTINGS GREATER THAN THE VALUE SHOWN MAY CAUSE DAMAGE TO THE CRIMP TOOLING, REFER TO THE INSTRUCTION SHEET FOR PROPER SETUP AND ADJUSTMENTS.

LOC	DIST	REVISIONS			
A	66	REV	DATE	BY	CHKD
		D	26AUG2014	YY	TE
		E	10OCT2018	MZ	KZ
		F	24JUL2019	FJ	TE
		G	21DEC2020	JWC	GB

	-	1	1	2119641-1	FEED CAM, AIR FEED	248
	-	1	1	2119082-9	CAM, SNAIL, INSULATION ADJUSTMENT	244
	-	1	1	2079764-1	WASHER, WAVE SPRING, CREST-TO-CREST	243
	-	1	1	2119083-1	RETAINER, INSULATION DIAL	242
	-	1	1	7-18023-7	SCR, SKT HD CAP M3 X 4.0	241
	-	1	1	2844940-2	AIR FEED MODULE	238
	-	1	1	2-1752354-8	STANDOFF, HOLD-DOWN	180
	-	1	1	9931111-1	PIN, SLOTTED SPRING 3.0 X 20.0	177
	-	1	1	8-22280-7	SPRING, COMPRESSION	176
	-	1	1	1752353-2	GUIDE PIN, HOLDDOWN	175
	-	1	1	1901680-2	GUIDE PIN, HOLDDOWN	174
	-	REF	REF	994970-2	COUNTER, MAGNETIC	164
	-	1	1	2844908-1	SCREW, LOCKING	99
	-	1	1	2844907-1	POST, LOCKING	98
	-	1	1	318563-1	GUARD, FRONT CHIP	89
	-	1	1	2-455888-8	SPACER, CRIMPER	82
	-	2	2	18024-6	SCR, BTN SKT HD CAP (M4 X 8.0)	79
	-	1	1	1803096-1	EXTENSION PLATE	78
	-	1	1	22278-8	SPRING, COMPRESSION	77
	-	1	1	854769-4	HOLDER, INS	74
	-	1	1	1803607-3	DOCUMENTATION PACKAGE	71
	-	1	1	2119791-5	DEPRESSOR, WIRE	70
	-	1	1	2119943-1	WASHER, SPACER	69
	-	1	1	2119740-1	TAG, IDENTIFICATION	67
	-	2	2	2168078-1	SCREW, DRIVE, RH, RoHS, 2 x .188	66
	-	1	1	2168083-2	SCR, SKT HD CAP, RoHS, M4 X 8.0	60
	-	1	1	5-18022-5	SCR, HEX HD CAP, M4 X 6.0	59
	-	1	1	21028-2	PIN, SLOTTED SPRING .062 X .250	58
	-	2	2	1338683-8	FEED PAWL	56
	-	4	4	2168083-3	SCR, SKT HD CAP, RoHS, M4 X 12.0	54
	-	1	1	1-5018030-0	NUT, HEX, REG, RoHS, M3.5	52
	-	1	1	1901681-2	HOLDDOWN, TERMINAL	51
	-	1	1	18023-9	SCR, SKT HD CAP M4 X 6.0	49
	-	1	1	1803583-9	APPLICATOR BASIC ASSEMBLY, SF	46
	-	1	1	1803515-2	RAM ASSEMBLY, SF ATLANTIC	44
	-	1	1	1803602-2	SCR, BHSC, RoHS (M8 X 40)	41
	-	1	1	1-1752356-0	SUPPORT, TERMINAL	34
	-	2	2	2079383-8	SCR, BHSC, RoHS (M4 X 16)	33
	-	2	2	2-2844962-8	SPACER, CYLINDRICAL, STRIP GUIDE	30
	-	1	1	1-2844992-0	ASSEMBLY, STRIP GUIDE	29
	-	1	1	455888-4	SPACER, CRIMPER	28
	-	1	1	2-1320928-7	STRIP GUIDE	24
	-	1	1	2168083-2	SCR, SKT HD CAP, RoHS, M4 X 8.0	21
	-	1	1	1-18028-2	WASHER, FLAT, REG M4	20
	-	1	1	2119533-1	STRIPPER, SIDE FEED	19
	-	1	1	2119806-1	INSERT, SHEAR	13
	-	1	1	3-22280-3	SPRING, COMPRESSION	12
	-	1	1	1-356885-4	STOP, SHEAR	11
	-	1	1	2119805-1	SHEAR HOLDER, FRONT	10
	-	1	1	454276-5	FLOATING SHEAR, FRONT	9
	1	2	1	1633711-4	ANVIL, COMBINATION	8
	-	-	-	-	-	7
	-	-	-	-	-	6
	-	1	1	1-2119780-3	DEPRESSOR, SHEAR	5
	-	1	1	238011-2	BLOCK, CRIMPER SPACER	4
	1	2	1	2-1633961-5	CRIMPER, INSULATION F PREMIUM	3
	-	1	1	455888-8	SPACER, CRIMPER	2
	1	2	1	1-456412-5	CRIMPER, WIRE .180 F PREMIUM	1
	-	77	-	-72	-2	
				PART NO	DESCRIPTION	ITEM NO

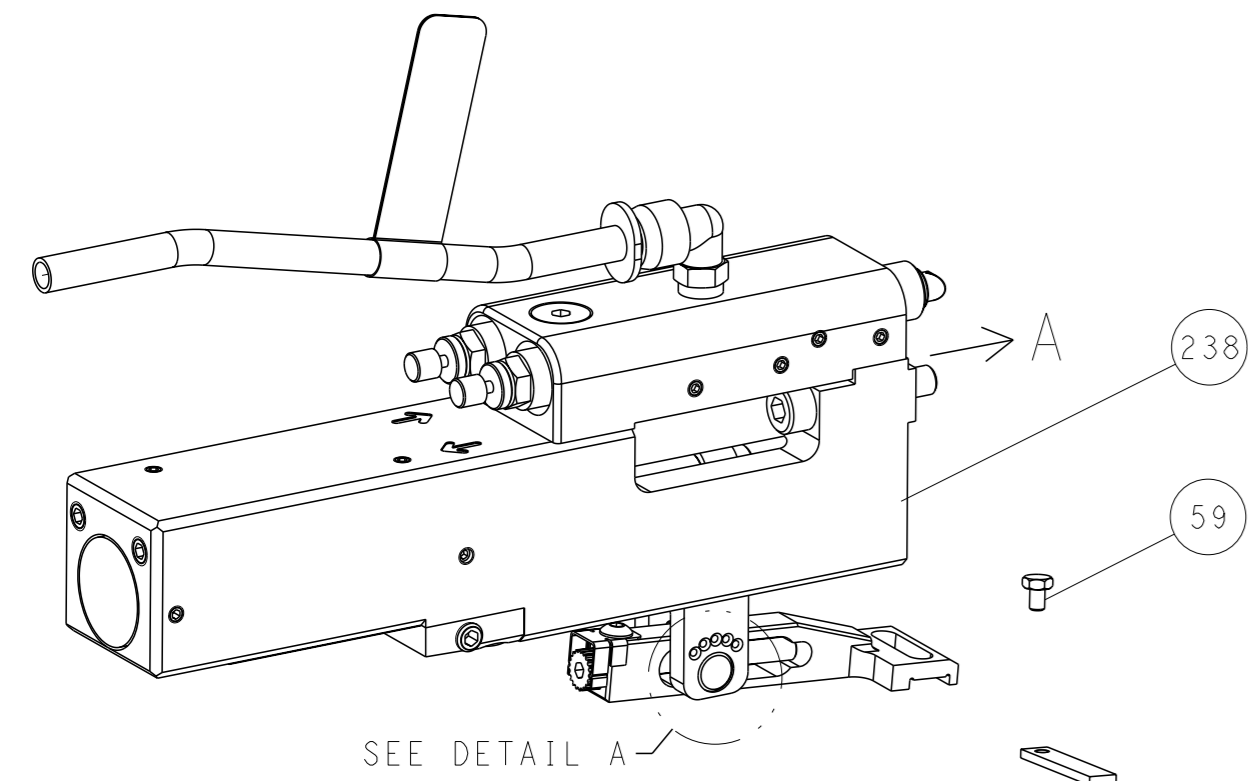
ATLANTIC VERSION
Shown on sheets 1 of 4 & 2 of 4
(Pacific version shown on sheets 3 of 4 & 4 of 4)

DIMENSIONS:		TOLERANCES UNLESS OTHERWISE SPECIFIED:		OWN L. ZHANG 08DEC2011		CHK L. ZHANG 08DEC2011		APVD S. XI 08DEC2011		NAME	
mm	0 PLC ±	1 PLC ±	2 PLC ±	3 PLC ±	4 PLC ±	PRODUCT SPEC		APPLICATION SPEC		Ocean Side Feed Applicator	
MATERIAL		FINISH		WEIGHT		SIZE		CAGE CODE		DRAWING NO	
						A1		00779		©=2151284	
						Customer Accessible Production Drawing		SCALE		SHEET 1 of 4 REV G	

LOC	DIST	REVISIONS					
A	66	P	LY#	DESCRIPTION	DATE	OWN	APVD
		-		SEE SHEET 1	-	-	-

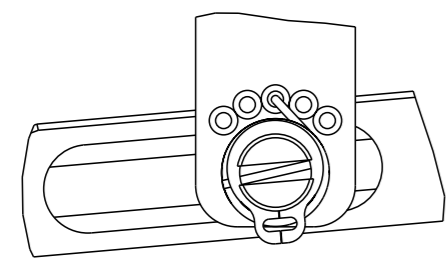
FEED TYPE

PNEUMATIC



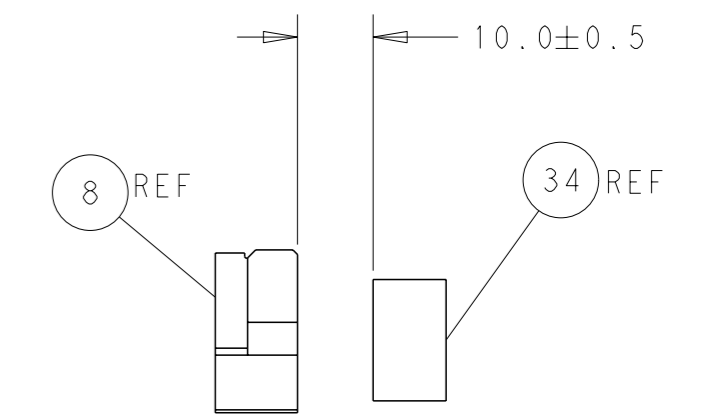
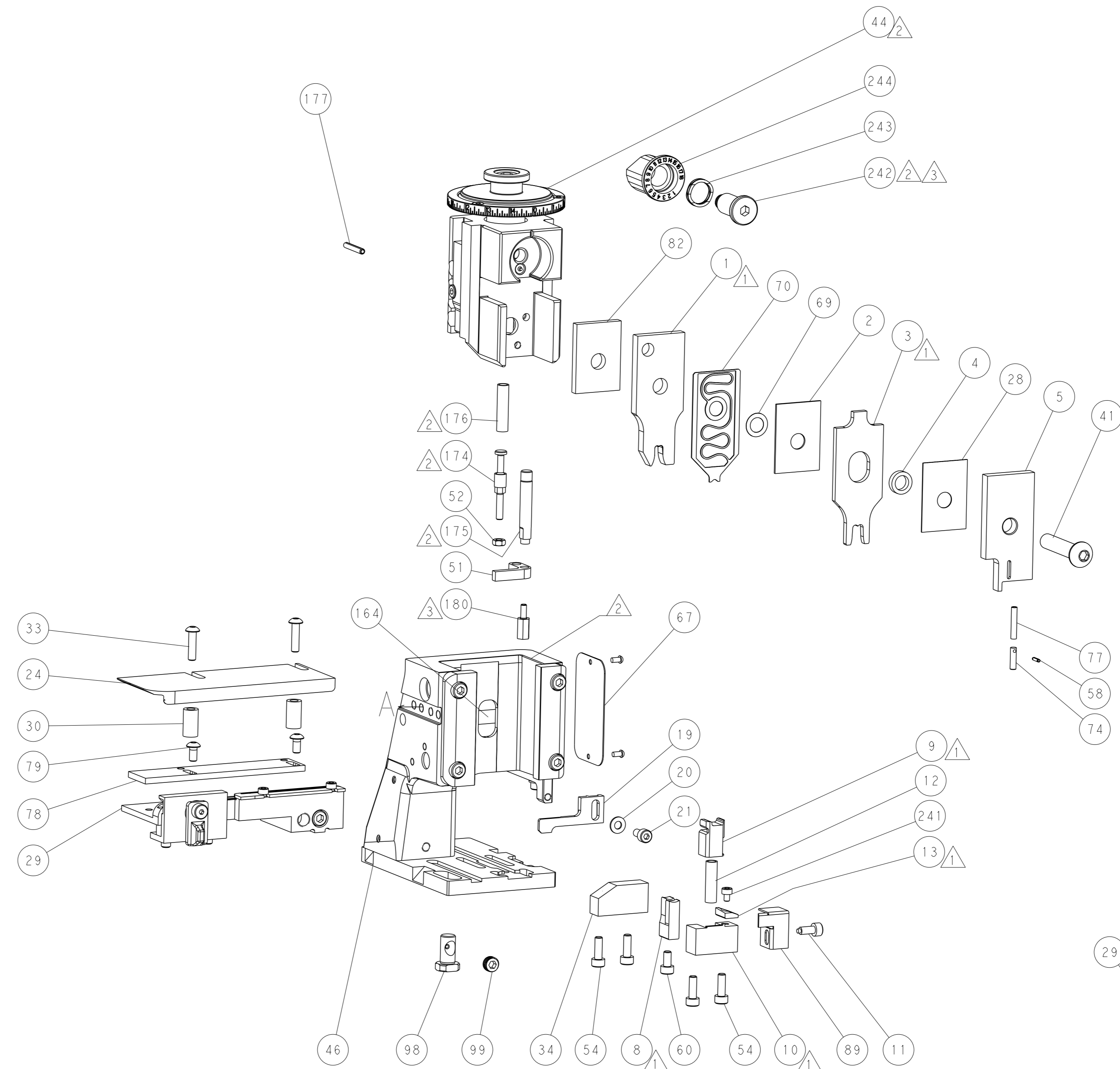
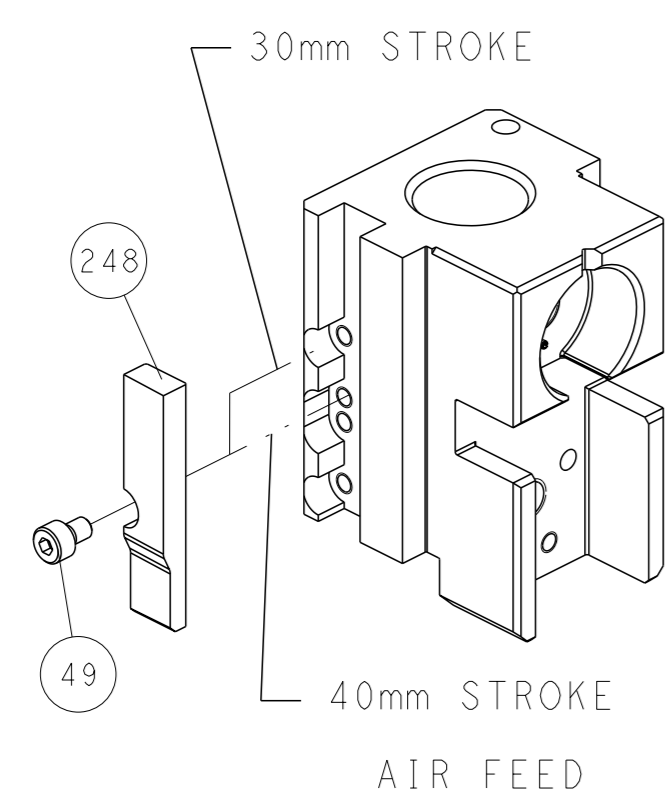
SEE DETAIL A

FEED SPRING SETTING POSITION (SHOWN FROM REAR SIDE)

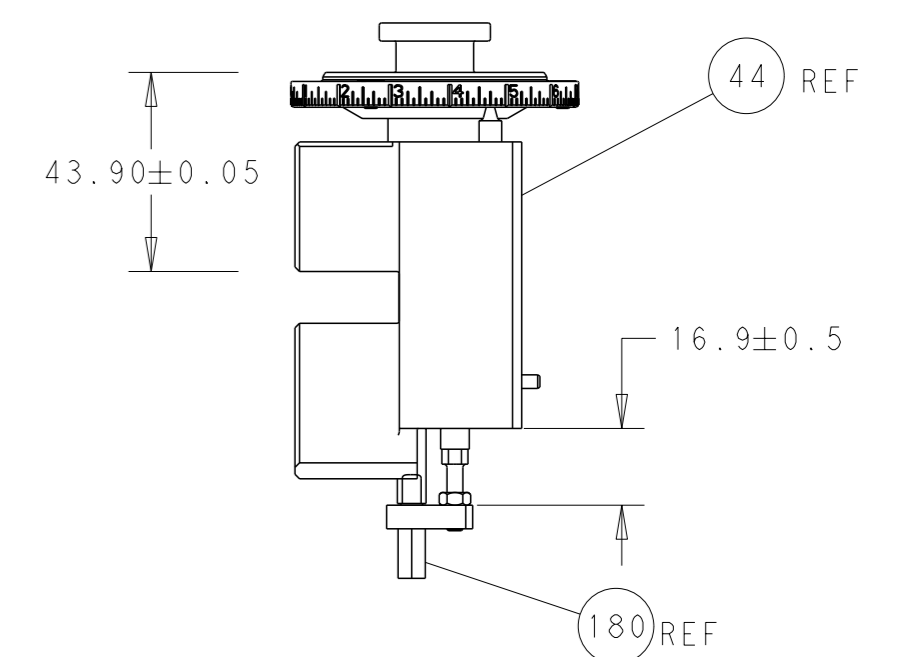


DETAIL A

CAM POSITION

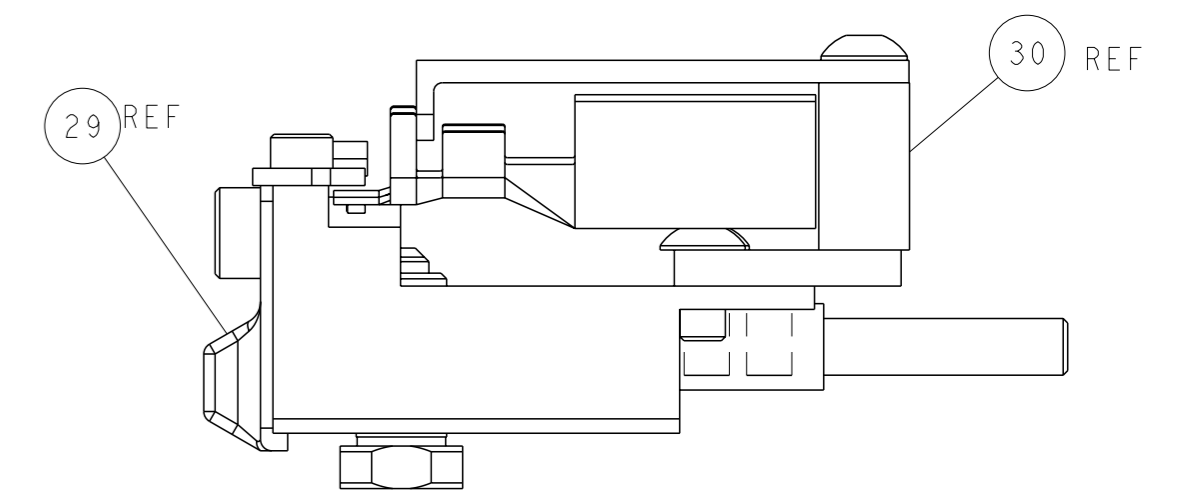


TERMINAL SUPPORT LOCATION



RAM AND HOLDDOWN SET-UP

ITEM 78 LOCATED AT FRONT HOLES



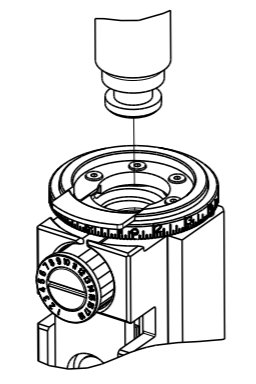
FEED TRACK POSITION GUIDE BY INSULATION BARREL

ATLANTIC VERSION
 Shown on sheets 1 of 4 & 2 of 4
 (Pacific version shown on sheets 3 of 4 & 4 of 4)

<small>THIS DRAWING IS A CONTROLLED DOCUMENT FOR TYCO ELECTRONICS CORPORATION. IT IS SUBJECT TO CHANGE AND THE CONTROL AND ENGINEERING ORGANIZATION SHOULD BE CONTACTED FOR THE LATEST REVISION.</small>		DWN L. ZHANG 08DEC2011 CHK L. ZHANG 08DEC2011 APVD S. XI 08DEC2011	TE Connectivity Harrisburg, PA 17105-3608
DIMENSIONS: mm TOLERANCES UNLESS OTHERWISE SPECIFIED: 0 PLC ± 1 PLC ± 2 PLC ± 3 PLC ± 4 PLC ± ANGLES FINISH *		NAME Ocean Side Feed Applicator PRODUCT SPEC APPLICATION SPEC	SIZE A1 CAGE CODE 00779 DRAWING NO. ©=2151284 RESTRICTED TO
MATERIAL:		WEIGHT:	SCALE 1:2 SHEET 2 of 4 REV G

PART NUMBER	REVISION	DESCRIPTION	FEED TYPE
2-2151284-2	G	FINE CRIMP HEIGHT ADJUST	PNEUMATIC
7-2151284-7	A	CRIMP TOOLING KIT	-

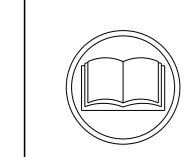
PACIFIC VERSION TERMINATOR
 INTERFACE ADAPTER



APPLICATOR DATA		
CRIMP	SIZE	TYPE
WIRE	4.57 mm [.180]	F
INSUL	6.35 mm [.250]	F
APPLICATOR INSTRUCTIONS 408-35042		

TERMINAL DATA: TE TERMINAL		TE CRIMP SPECIFICATION	
TERMINAL NAME: MAXI-POWER-TIMER CONTACT			
WIRE STRIP LENGTH 7.00-7.80 mm [.276-.307 IN]		INSULATION DIAMETER RANGE Ø4.00-5.20 mm [.157-.205 IN]	
TERMINAL APPLICATION SPECIFICATION	114-18075	-	-
TERMINALS APPLIED			
TE TERMINAL	TE TERMINAL	TE TERMINAL	TE TERMINAL
962930-1	1-962930-6	2-962930-1	9-962930-1
967228-1	2-967228-1	1-1719952-6	

WIRE SIZE	CRIMP HEIGHT mm [INCH]	CRIMP HEIGHT REFERENCE SETTING
6.00mm2	3.08+/-0.05 [.121+/-0.002]	3.5
4.00mm2	2.74+/-0.05 [.108+/-0.002]	6.9



- 1 RECOMMENDED SPARE PARTS
- 2 REFER TO SUPPLIED INSTRUCTION SHEET FOR CLEANING, LUBRICATION AND STORAGE OF APPLICATOR.
- 3 APPLY PART NUMBER 1-23419-5 LOCTITE TO THREADS OF ITEMS 180. APPLY PART NUMBER 2-23419-6 LOCTITE TO THREADS OF ITEM 242.
- 4 CRIMP HEIGHT REFERENCE SETTING WAS THE SETTING USED WHEN THE APPLICATOR WAS QUALIFIED AT THE FACTORY. ADJUSTMENT MAY BE NECESSARY WHEN RUNNING APPLICATOR IN THE FIELD.
- 5 TERMINAL PITCH NOT COMPATIBLE WITH MECHANICAL FEED.
- 6. UNLESS SPECIFIED OTHERWISE TORQUE VALUES SHALL BE USED PER DOCUMENT, 101-35000.

***WARNING**
 ON INSTALLATION, SET WIRE DISC TO CRIMP HEIGHT REFERENCE SETTING FOR LARGEST WIRE SIZE. CRIMP HEIGHT REFERENCE SETTINGS GREATER THAN THE VALUE SHOWN MAY CAUSE DAMAGE TO THE CRIMP TOOLING, REFER TO THE INSTRUCTION SHEET FOR PROPER SETUP AND ADJUSTMENTS.

PACIFIC VERSION
 Shown on sheets 3 of 4 & 4 of 4
 (Atlantic version shown on sheets 1 of 4 & 2 of 4)

LOC	DIST	REVISIONS					
		P	LYR	DESCRIPTION	DATE	OWN	APVD
A	66	-	-	SEE SHEET 1	-	-	-

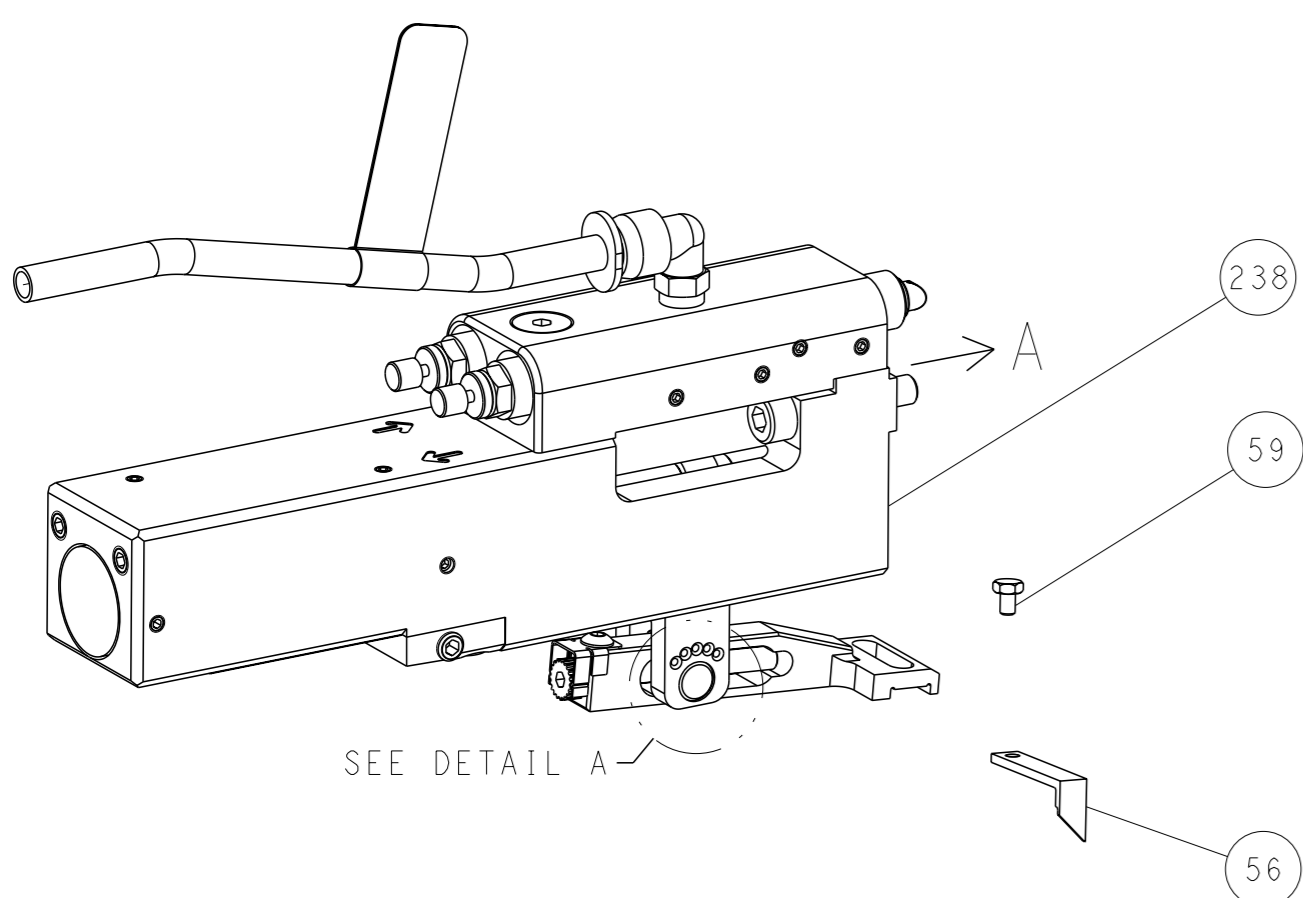
-	1	2119082-9	CAM, SNAIL, INSULATION ADJUSTMENT	244
-	1	2079764-1	WASHER, WAVE SPRING, CREST-TO-CREST	243
3	-	2119083-1	RETAINER, INSULATION DIAL	242
-	1	7-18023-7	SCR, SKT HD CAP M3 X 4.0	241
-	1	2844940-2	AIR FEED MODULE	238
3	-	2-1752354-8	STANDOFF,HOLD-DOWN	180
-	1	993111-1	PIN, SLOTTED SPRING 3.0 X 20.0	177
-	1	8-22280-7	SPRING, COMPRESSION	176
-	1	1752353-2	GUIDE PIN,HOLDDOWN	175
-	1	1901680-2	GUIDE PIN,HOLDDOWN	174
-	REF	994970-2	COUNTER, MAGNETIC	164
-	1	2119641-2	FEED CAM, AIR FEED	151
-	1	2168083-8	SCR, SKT HD CAP, RoHS, M4 X 16	144
-	4	2168083-9	SCR, SKT HD CAP, RoHS, M4 X 20	143
-	1	1-1803583-0	APPLICATOR BASIC ASSEMBLY, SF	141
-	1	1803516-2	RAM ASSEMBLY, SF PACIFIC	140
-	1	2844908-1	SCREW, LOCKING	99
-	1	2844907-1	POST, LOCKING	98
-	1	318563-1	GUARD, FRONT CHIP	89
-	1	2-455888-8	SPACER, CRIMPER	82
-	2	18024-6	SCR, BTN SKT HD CAP (M4 X 8.0)	79
-	1	1803096-1	EXTENSION PLATE	78
-	1	22278-8	SPRING, COMPRESSION	77
-	1	854769-4	HOLDER, INS	74
-	1	1803607-3	DOCUMENTATION PACKAGE	71
-	1	2119791-5	DEPRESSOR, WIRE	70
-	1	2119943-1	WASHER, SPACER	69
-	1	2119740-1	TAG,IDENTIFICATION	67
-	2	2168078-1	SCREW, DRIVE, RH, RoHS, 2 x .188	66
-	1	5-18022-5	SCR, HEX HD CAP, M4 X 6.0	59
-	1	21028-2	PIN, SLOTTED SPRING .062 X .250	58
-	2	1338683-8	FEED PAWL	56
-	1	1-5018030-0	NUT, HEX, REG, RoHS, M3.5	52
-	1	1901681-2	HOLDDOWN, TERMINAL	51
-	1	18023-9	SCR, SKT HD CAP M4 X 6.0	49
-	1	1803602-2	SCR, BHSC, RoHS (M8 X 40)	41
-	1	1-1752356-0	SUPPORT, TERMINAL	34
-	2	2079383-8	SCR, BHSC, RoHS (M4 X 16)	33
-	2	2-2844962-8	SPACER, CYLINDRICAL, STRIP GUIDE	30
-	1	1-2844992-0	ASSEMBLY, STRIP GUIDE	29
-	1	455888-4	SPACER, CRIMPER	28
-	1	2-1320928-7	STRIP GUIDE	24
-	1	2168083-2	SCR, SKT HD CAP, RoHS, M4 X 8.0	21
-	1	1-18028-2	WASHER, FLAT, REG M4	20
-	1	2119533-1	STRIPPER, SIDE FEED	19
1	-	2119806-1	INSERT, SHEAR	13
1	-	3-22280-3	SPRING, COMPRESSION	12
-	1	1-356885-4	STOP, SHEAR	11
1	-	2119805-1	SHEAR HOLDER, FRONT	10
1	-	454276-5	FLOATING SHEAR, FRONT	9
1	1	1633711-4	ANVIL, COMBINATION	8
-	-	-	-	7
-	-	-	-	6
-	1	1-2119780-3	DEPRESSOR, SHEAR	5
-	1	238011-2	BLOCK, CRIMPER SPACER	4
1	1	2-1633961-5	CRIMPER, INSULATION F PREMIUM	3
-	1	455888-8	SPACER, CRIMPER	2
1	1	1-456412-5	CRIMPER, WIRE .180 F PREMIUM	1
-77	-22	PART NO	DESCRIPTION	ITEM NO

DIMENSIONS:		TOLERANCES UNLESS OTHERWISE SPECIFIED:		OWN	L. ZHANG	08DEC2011	TE Connectivity Harrisburg, PA 17105-3608
mm		0 PLC	±	CHK	L. ZHANG	08DEC2011	
		1 PLC	±	APVD	S. YI	08DEC2011	
		2 PLC	±	PRODUCT SPEC			
		3 PLC	±	APPLICATION SPEC			NAME
		4 PLC	±	MATERIAL			SIZE
		ANGLES	±	FINISH			CAGE CODE
		MATERIAL		WEIGHT		DRAWING NO	
		MATERIAL		WEIGHT		RESTRICTED TO	
		MATERIAL		WEIGHT		SCALE	
		MATERIAL		WEIGHT		SHEET	
		MATERIAL		WEIGHT		REV	
		MATERIAL		WEIGHT		G	

LOC	DIST	REVISIONS					
A	66	P	LYR	DESCRIPTION	DATE	OWN	APVD
		-		SEE SHEET 1	-	-	-

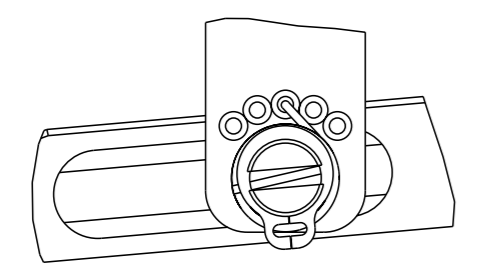
FEED TYPE

PNEUMATIC



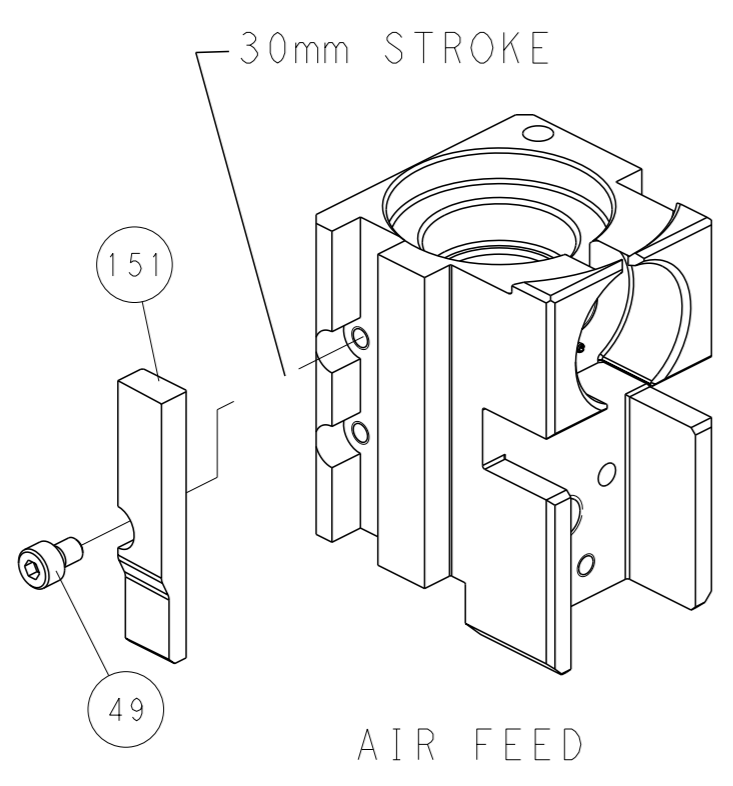
SEE DETAIL A

FEED SPRING SETTING POSITION (SHOWN FROM REAR SIDE)

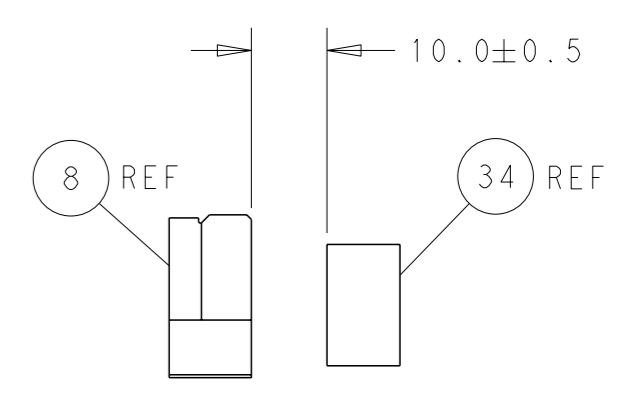
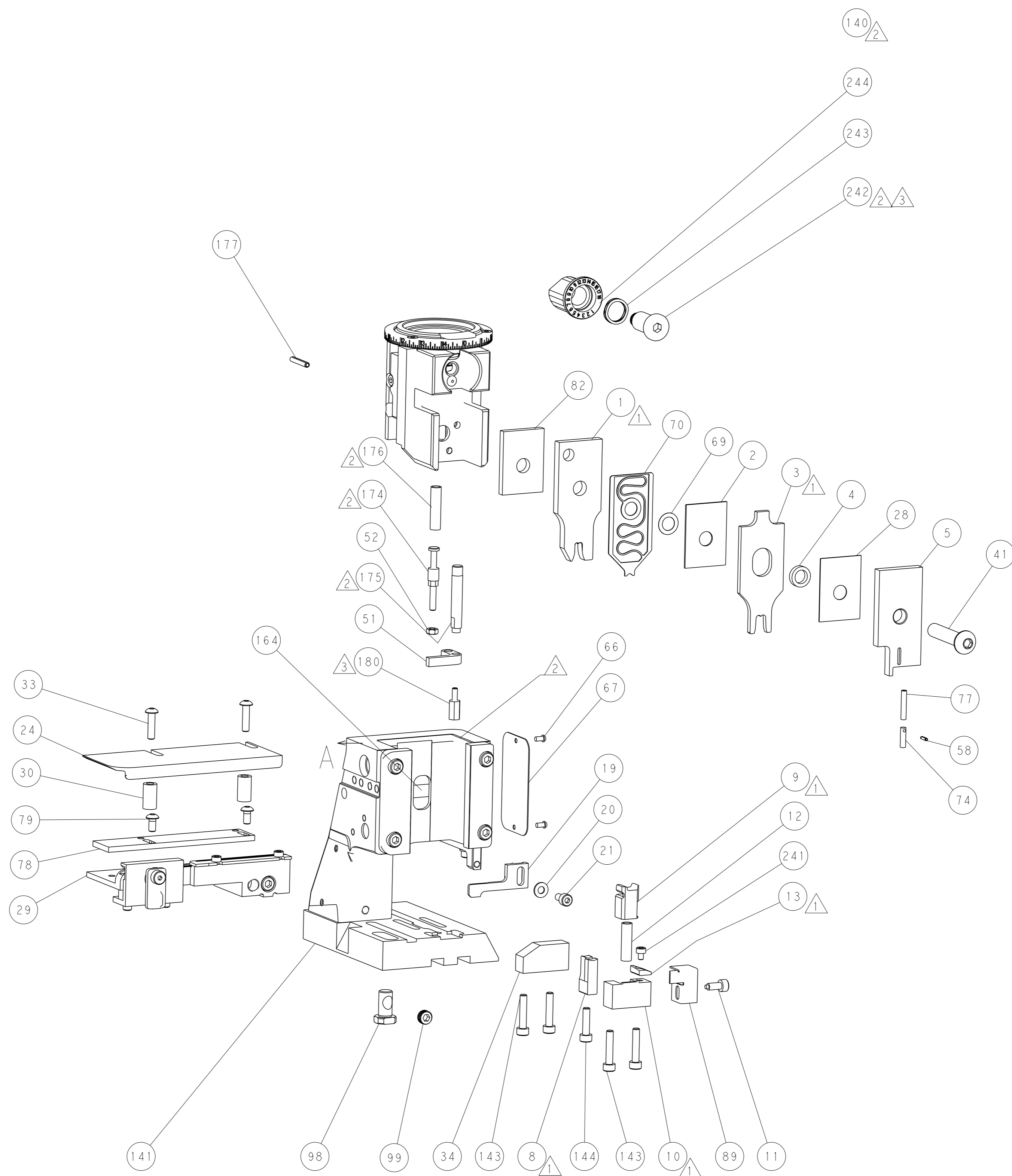


DETAIL A

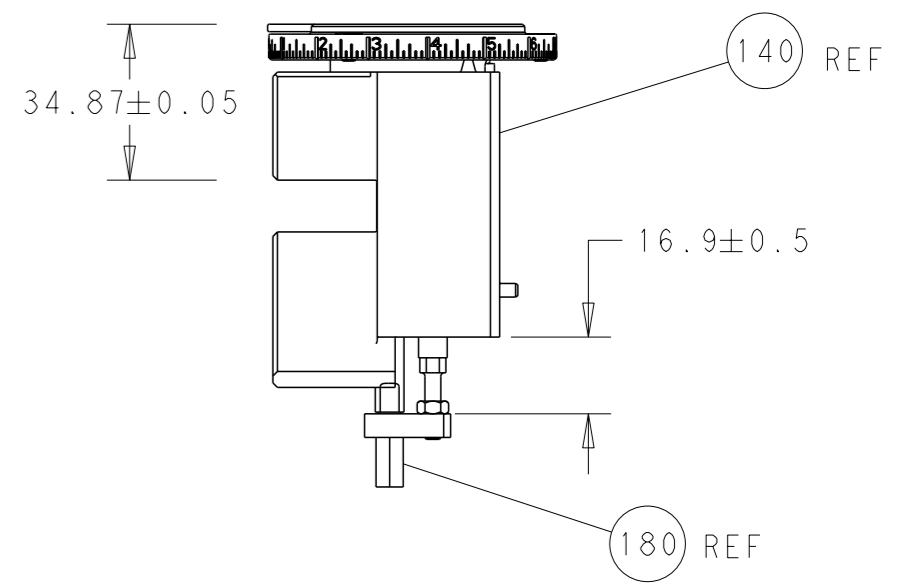
CAM POSITION



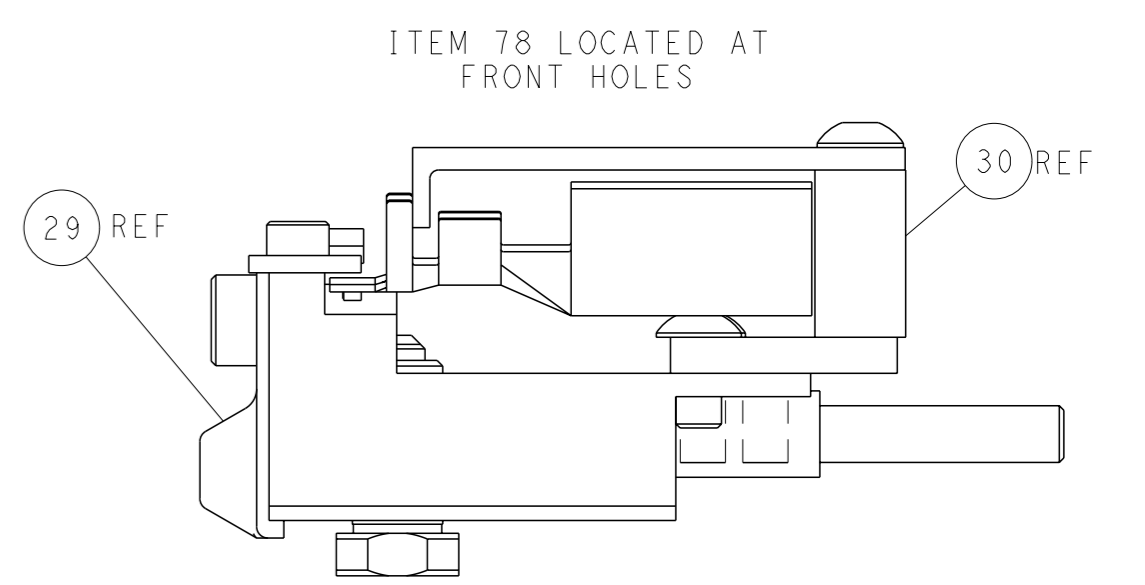
AIR FEED



TERMINAL SUPPORT LOCATION



RAM AND HOLDDOWN SET-UP



FEED TRACK POSITION GUIDE BY INSULATION BARREL

PACIFIC VERSION
 Shown on sheets 3 of 4 & 4 of 4
 (Atlantic version shown on sheets 1 of 4 & 2 of 4)

<small>THIS DRAWING IS UNPUBLISHED. RELEASED FOR PUBLICATION 20. COPYRIGHT 20 BY TYCO ELECTRONICS CORPORATION. ALL RIGHTS RESERVED.</small>		OWN: L. ZHANG 08DEC2011 CHK: L. ZHANG 08DEC2011 APVD: S. XI 08DEC2011	TE Connectivity Harrisburg, PA 17105-3608
DIMENSIONS: mm TOLERANCES UNLESS OTHERWISE SPECIFIED: 0 PLC ± 1 PLC ± 2 PLC ± 3 PLC ± 4 PLC ± ANGLES FINISH ±	PRODUCT SPEC APPLICATION SPEC WEIGHT SCALE: 1:2	NAME: Ocean Side Feed Applicator SIZE: A1 CAGE CODE: 00779 DRAWING NO: 2151284 SHEET 4 OF 4	RESTRICTED TO: G