

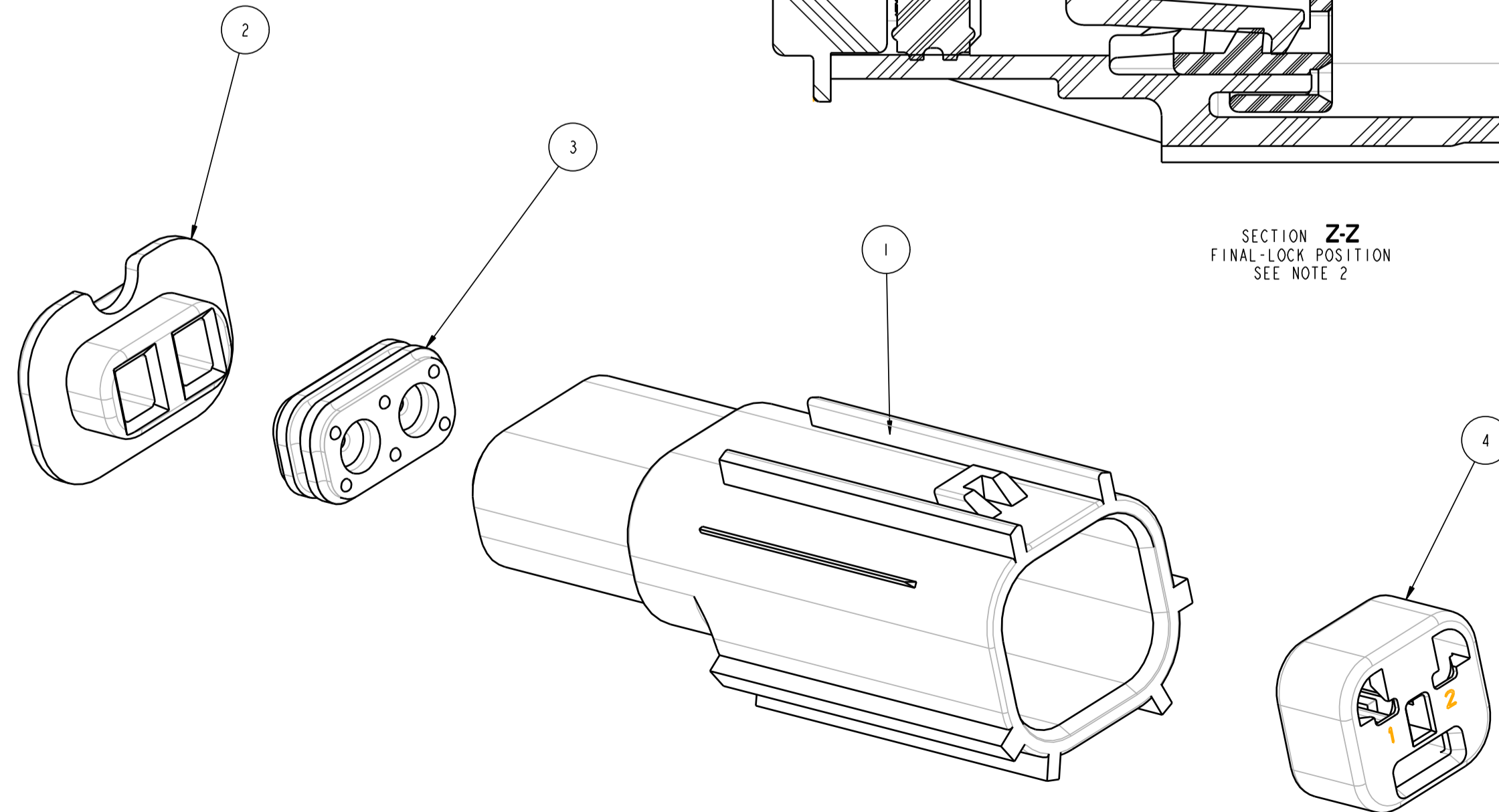
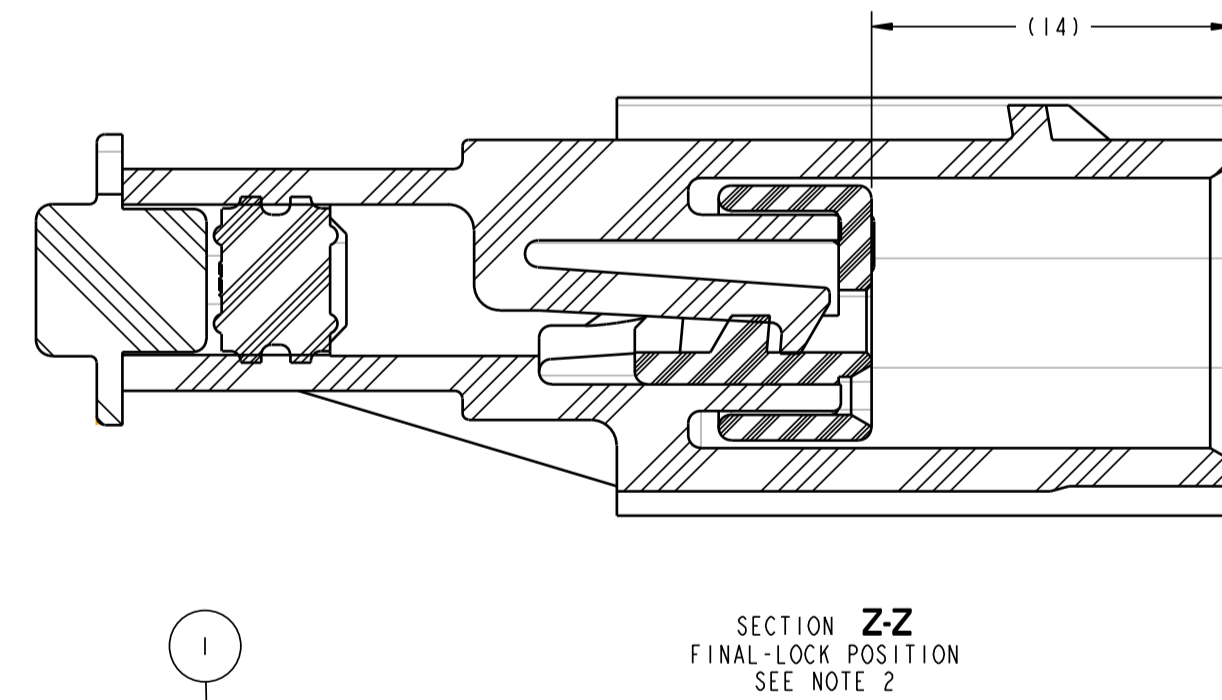
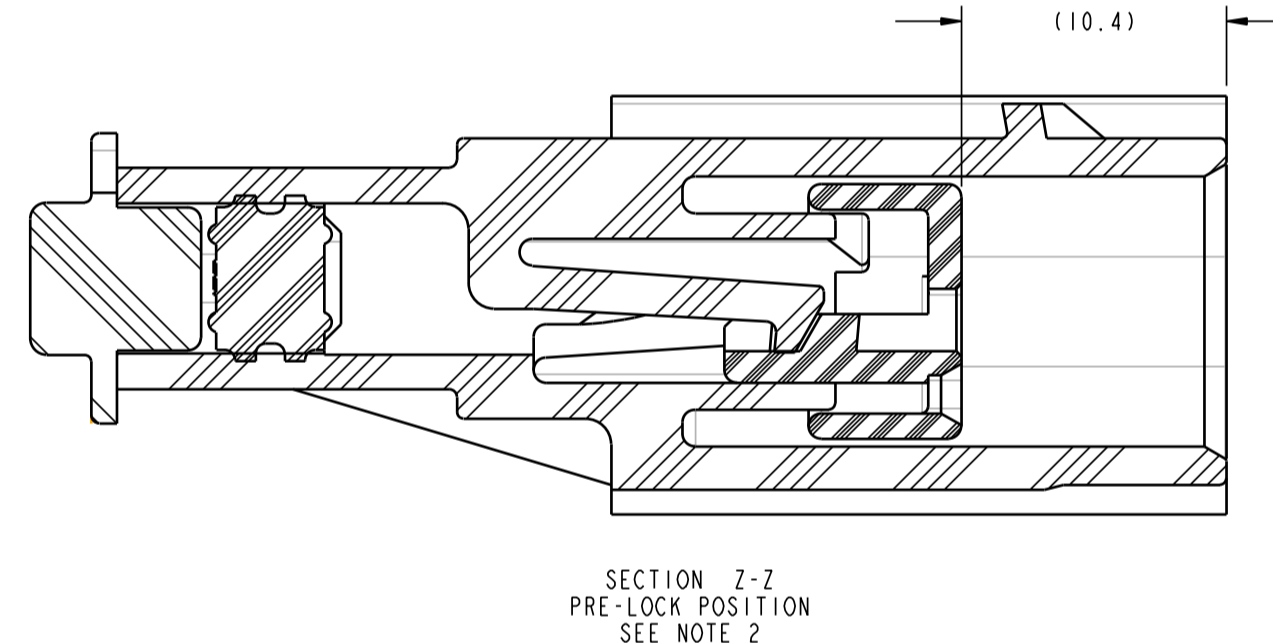
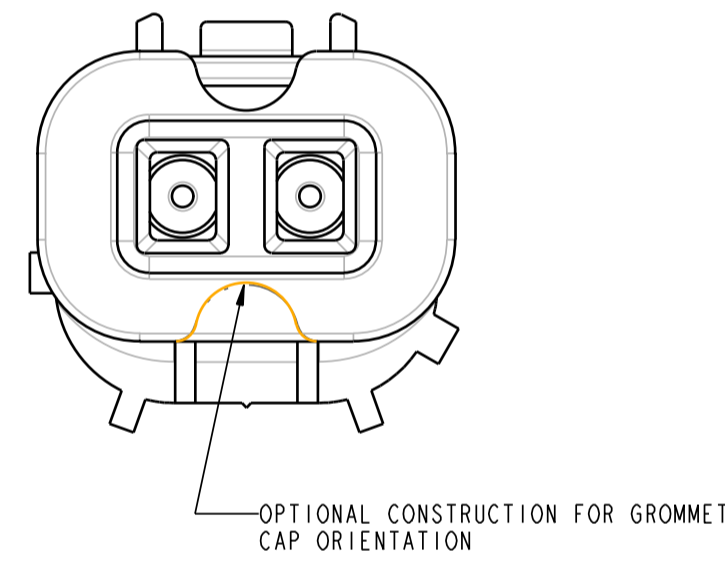
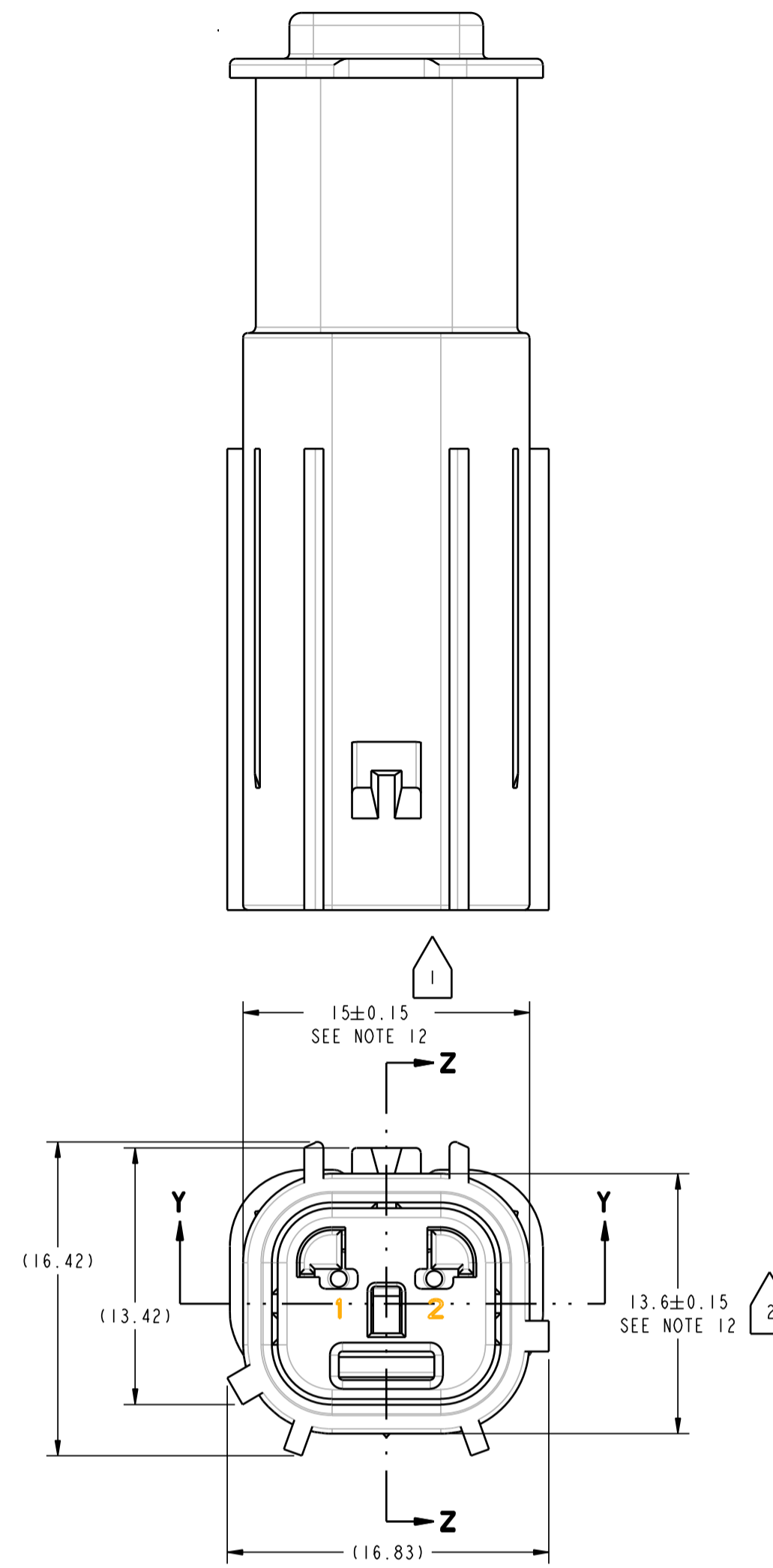
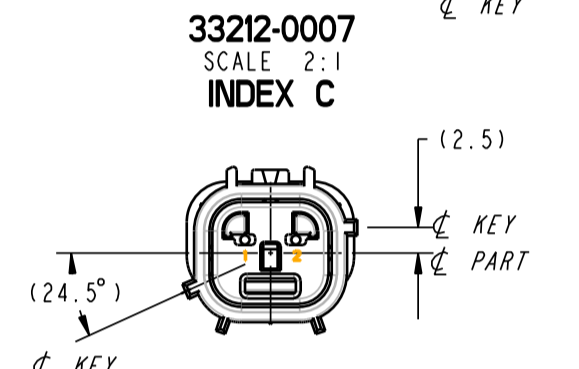
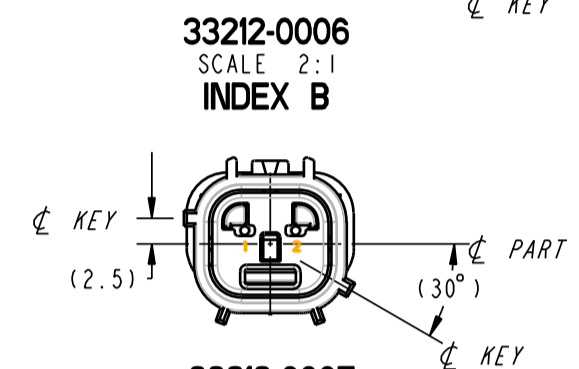
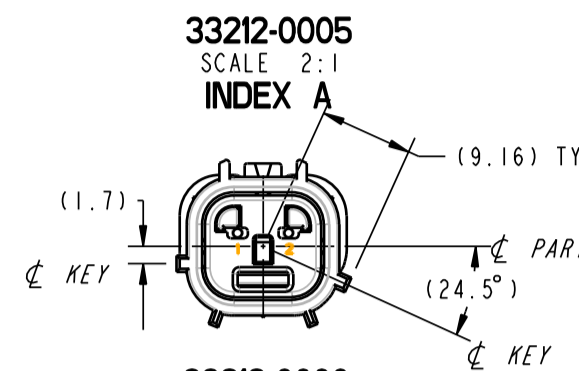
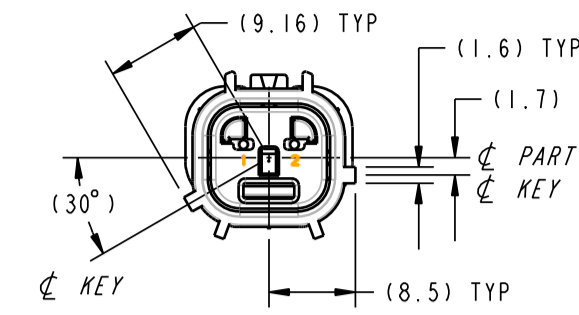
MOLEX ASSY • 33212-0005 INDEX A (REF DC • 4793106)				
ITEM	QTY	MOLEX P/N	DESCRIPTION	MATERIAL
1	1	33212-0001	HSG CONN-BLADE	15% G.F. NYLON
2	1	33209-0001	GROMMET CAP	15% G.F. NYLON
3	1	33019-0023	GROMMET	SILICONE RUBBER, 30 DURO, BURNT ORANGE (PURCHASED ITEM)
4	1	33213-0001	INSERT - BLADE INSERT	15% G.F. NYLON

MOLEX ASSY • 33212-0006 INDEX B (REF DC ASSY • 479451AA)				
ITEM	QTY	MOLEX P/N	DESCRIPTION	MATERIAL
1	1	33212-0002	HSG CONN-BLADE	15% G.F. NYLON
2	1	33209-0001	GROMMET CAP	15% G.F. NYLON
3	1	33019-0023	GROMMET	SILICONE RUBBER, 30 DURO, BURNT ORANGE (PURCHASED ITEM)
4	1	33213-0001	INSERT - BLADE INSERT	15% G.F. NYLON

MOLEX ASSY • 33212-0007 INDEX C (REF DC ASSY • 479452AA)				
ITEM	QTY	MOLEX P/N	DESCRIPTION	MATERIAL
1	1	33212-0003	HSG CONN-BLADE	15% G.F. NYLON
2	1	33209-0001	GROMMET CAP	15% G.F. NYLON
3	1	33019-0023	GROMMET	SILICONE RUBBER, 30 DURO, BURNT ORANGE (PURCHASED ITEM)
4	1	33213-0001	INSERT - BLADE INSERT	15% G.F. NYLON

MOLEX ASSY • 33212-0008 INDEX D (REF DC ASSY • 479453AA)				
ITEM	QTY	MOLEX P/N	DESCRIPTION	MATERIAL
1	1	33212-0004	HSG CONN-BLADE	15% G.F. NYLON
2	1	33209-0001	GROMMET CAP	15% G.F. NYLON
3	1	33019-0023	GROMMET	SILICONE RUBBER, 30 DURO, BURNT ORANGE (PURCHASED ITEM)
4	1	33213-0001	INSERT - BLADE INSERT	15% G.F. NYLON

KEY OPTIONS
FRONT VIEWS



EXPLODED VIEW
2-WAY CONNECTOR BLADE ASSEMBLY
(MOLEX PART NUMBER: 33212-0005)

NOTES:

- DESIGNED TO MATE WITH RECEPTACLE ASSEMBLY MOLEX CHART SD-33214-002 (REF DC CHART # 4793837)
- ASSY SHIPPED WITH INSERT IN PRE-LOCK POSITION (SEE SECTION Z-Z PRE-LOCK). UPON FULL TERMINAL ASSY, THE INSERT MUST BE SNAPPED INTO ITS FINAL-LOCK POSITION (SEE SECTION Z-Z FINAL-LOCK)
- BLADE TERMINAL (MOLEX DWG SD-33121-001) TO BE USED WITH THIS ASSY.
- THE MAXIMUM INSERT ON FORCE FOR A 16 TO 20 AWG TERMINAL IS 30 N (EXCEPTION OF PF-9600 REV A, A SECTION 5.3.1.2)
- FORCE TO PUSH INSERT INTO FINAL-LOCK POSITION: 10N MIN, 50 N MAX
- MINIMUM FORCE TO TAKE INSERT FROM FINAL-LOCK TO PRE-LOCK 25.0 N
- MINIMUM FORCE TO REMOVE INSERT FROM CONNECTOR ONCE IN PRE-LOCK: 15 N
- GROMMET CAP TO BE SONICALLY WELDED TO CONNECTOR HOUSING. CAP TO MEET OR EXCEED 110 N OF PULL-OFF FORCE.
- QUALITY ASSURANCE REQUIREMENTS PER PS-7300: 1 DIAMOND
- CRITICAL VERIFICATION REQUIREMENTS PER PS-8335: 6 PENTAGONS
- SYSTEM TO BE USED WITH MS-8288 AND MS-9502, CABLE SIZE 20, 18 AND 16 AWG FOR SEALING PURPOSE ONLY
- HIGHLIGHTED DIMENSION TO BE MEASURED AT DATUM A
- THIS DRAWING REPLACES DC 4793836

QUALITY SYMBOLS	GENERAL TOLERANCES (UNLESS SPECIFIED)		SCALE	DESIGN UNITS	THIRD ANGLE PROJECTION	REVISE ON CAD ONLY			
	mm	INCH	5:1	MM					
DESCRIPTION	4 PLACES	±	±	DESIGN ENGINEER	DATE	TITLE			
	3 PLACES	±	±	R.I. FRANK	3-25-96	CONNECTOR ASSY			
	2 PLACES	± AS SHOWN	±	DRAWN BY	DATE	2-WAY 1.5MM BLADE SYSTEM			
	1 PLACE	± AS SHOWN	±	M.E. GEETER SR.	3-25-96	CHART			
	ANGULAR ± AS SHOWN		CHECKED BY	DATE	MOLEX INCORPORATED				
			R.H. BELL	3-25-96					
			APPROVED BY	DATE	MATERIAL NO.	DOCUMENT NO.	SHEET NO.		
			H. ZAVERZENCE	3-25-96	SEE TABLE	SD-33212-005	1 OF 1		
THIS DRAWING CONTAINS INFORMATION THAT IS PROPRIETARY TO MOLEX INCORPORATED AND SHOULD NOT BE USED WITHOUT WRITTEN PERMISSION									E