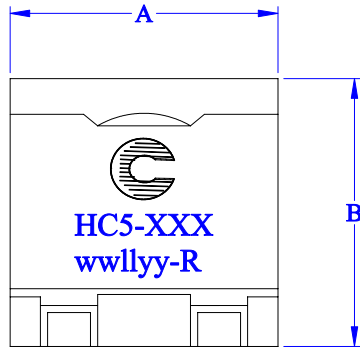
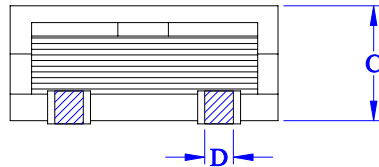


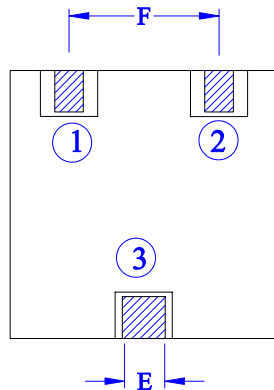
TOP VIEW



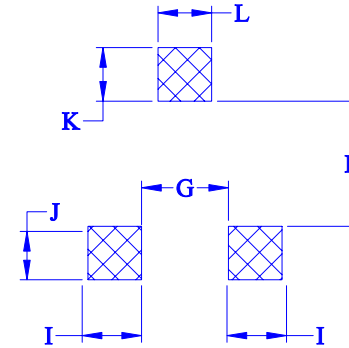
FRONT VIEW



BOTTOM VIEW



RECOMMENDED PCB LAYOUT



DIMENSION TABLE

A: 12.50 ±0.80	G: 4.00 Ref.
B: 12.50 ±0.60	H: 7.00 Ref.
C: 5.30 ±0.50	I: 3.00 Ref.
D: 2.00 ±0.20	J: 3.30 Ref.
E: 2.60 ±0.20	K: 3.30 Ref.
F: 7.00 ±0.50	L: 3.00 Ref.

SCHEMATIC



- Notes:**
- All dimensions are in millimeters unless otherwise noted.
 - Stamping: Coiltronics Logo
(HC5-xxx) Last 3 characters = Inductance in μH . R=decimal point.
If no R is present third character = # of zeros.
wwllyy = (Date Code) R= (Revision Level)
 - RoHS Compliant

Cooper Electronic Technologies

3601 Quantum Boulevard Boynton Beach, Florida 33426.

Inductor Shielded SMD Power (HC5)
Family Drawing

Size	Drawing Number:	HC5-5 Inductor Line
A	Revision Level:	A Sheet 4 of 4

