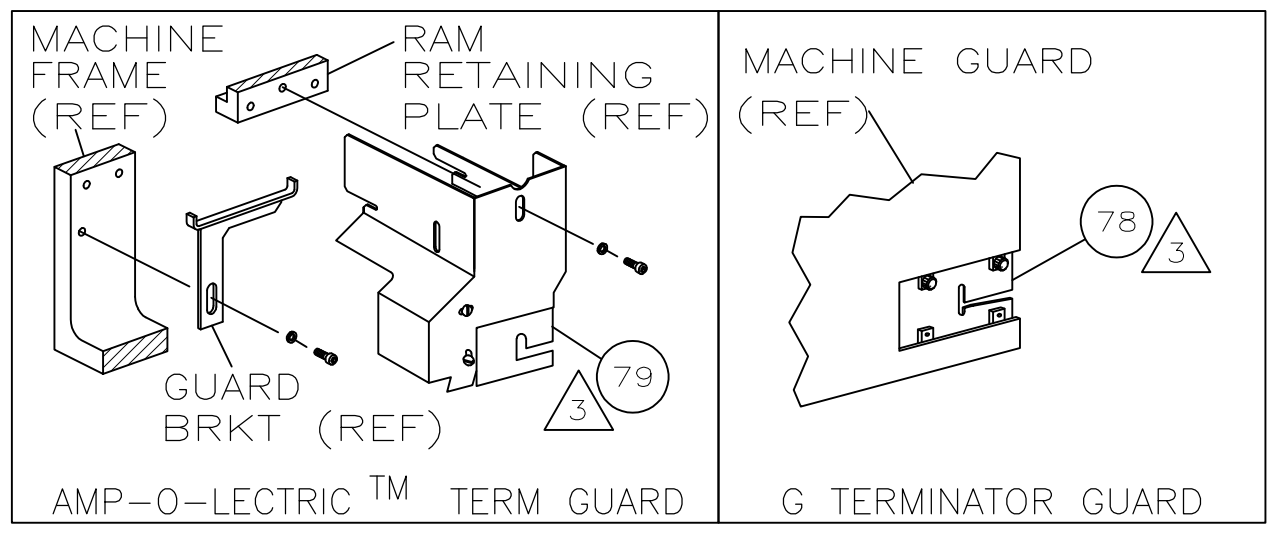
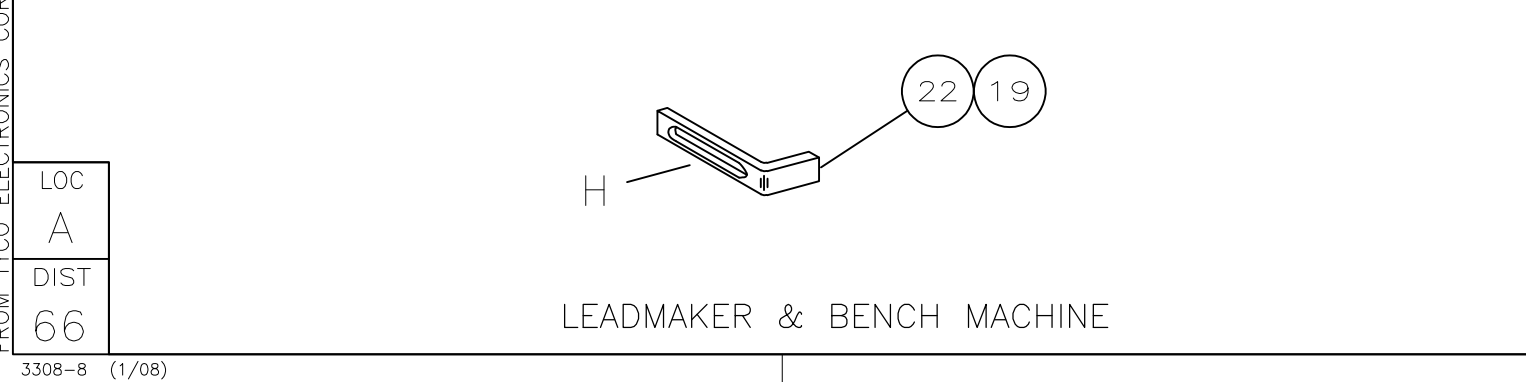
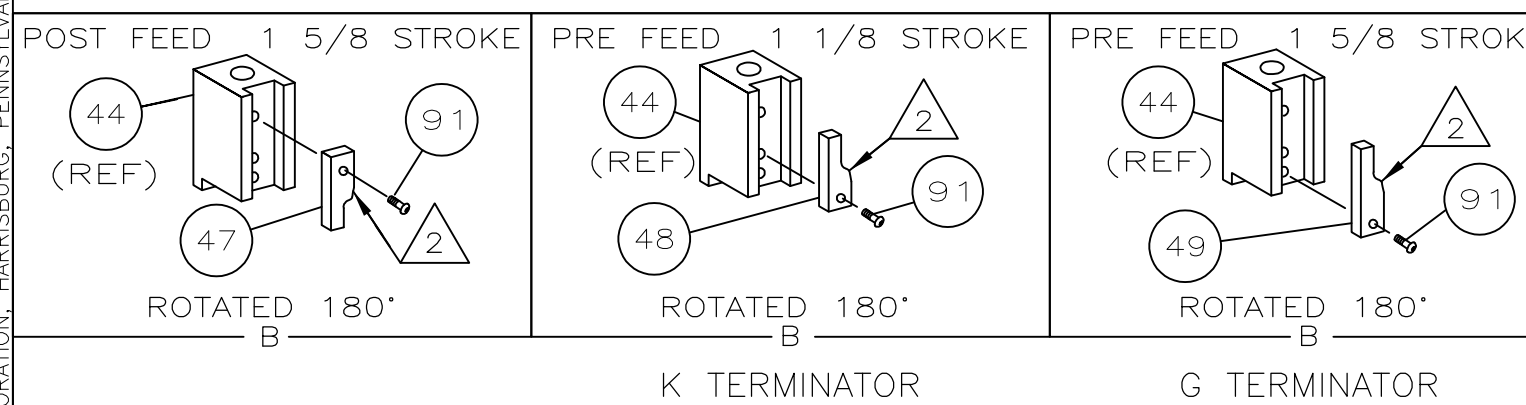
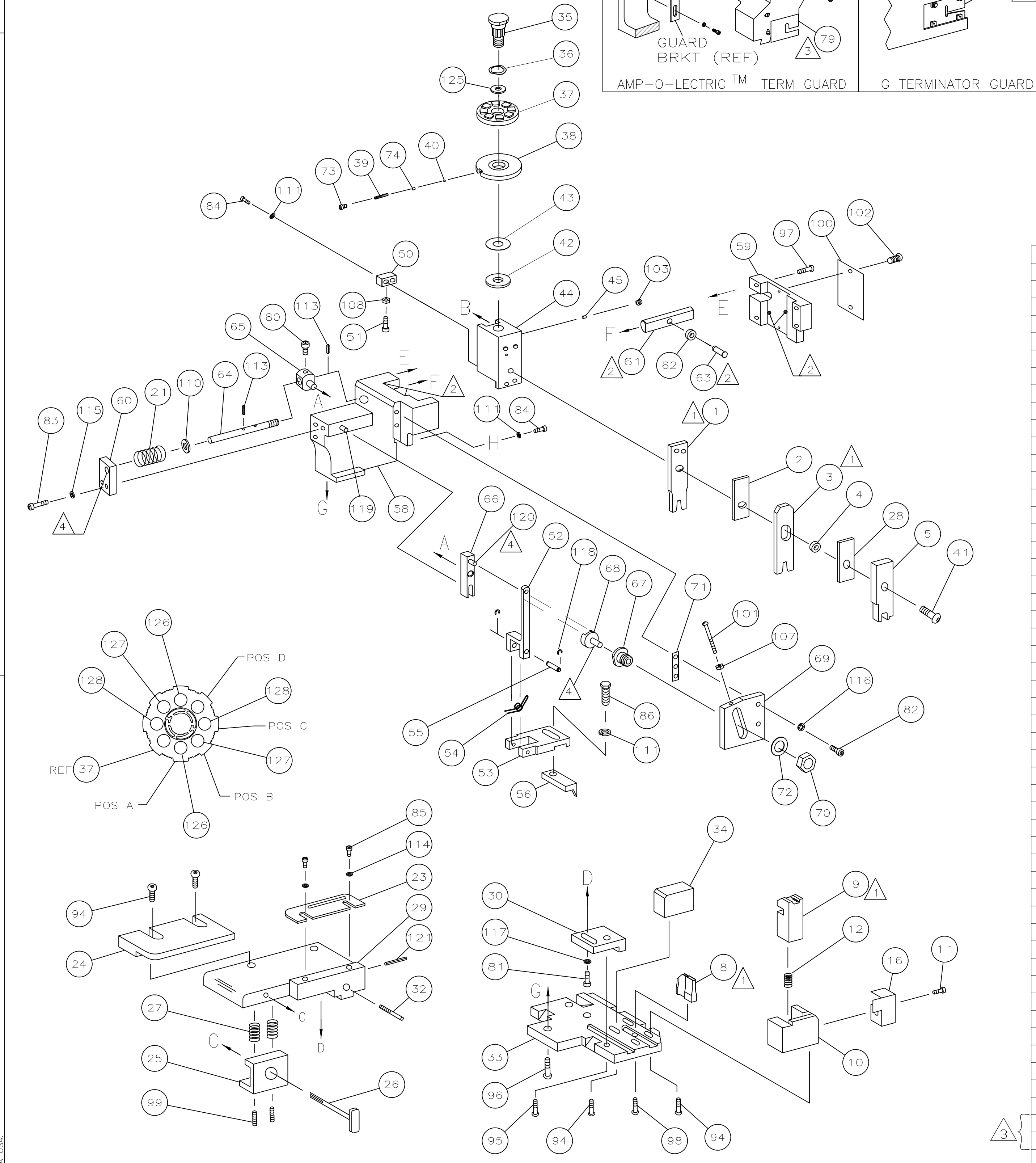


Table with 3 columns: PART NUMBER, REV, FIRST USED. Rows include 1385833-1, 1385833-2, 1385833-3.



- Recommended Spare Parts list: Grease lightly, Guard must be in place, Lubricate daily using No. 20 Machine Oil, Items with qty of ref specified are used on item 46.

Terminal Name: Terminal, Socket. Table with columns: AMP TERM PN, MFR TERM PN, ITT CANNON TERMINAL, AMP CRIMP SPECS. Includes crimp height and wire size specifications.

Table with columns: WIRE STRIP LENGTH, TERM APPL SPEC, FEED, APPL INSTRUCTION, SET UP GAGE, LAYOUT. Values include .215-.231, NONE, .400, 408-8040, 458637-1, L3050.

Main parts list table with columns: QTY REQD PER ASSY, PART NO, DESCRIPTION, ITEM NO. Lists 129 items including pins, washers, screws, and springs.

Small table with 3 columns: Rev, Description, Action. Rows include Leadmaker, Bench Model K, Bench Model G.

Large table with columns: REF, REF, REF, QTY, PART NO, DESCRIPTION, ITEM NO. Lists parts like NUT, HEX, LEVER, SPRING, and STRIPPER.

Footer section including revision record (P, LTR, REV), dimensions (INCHES), tolerances, drawing name (SIDE FEED HDM APPLICATOR), and scale (A1).

THIS INFORMATION IS CONFIDENTIAL AND PROPRIETARY TO TYCO ELECTRONICS CORPORATION AND ITS WORLDWIDE SUBSIDIARIES AND AFFILIATES. IT MAY NOT BE DISCLOSED TO OTHERS WITHOUT THE WRITTEN AUTHORIZATION OF TYCO ELECTRONICS CORPORATION, HARRISBURG, PENNSYLVANIA, USA.