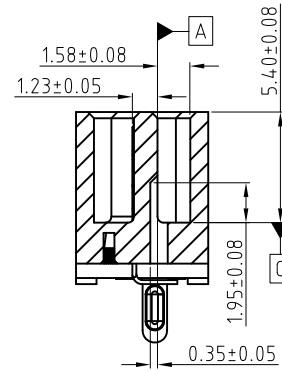
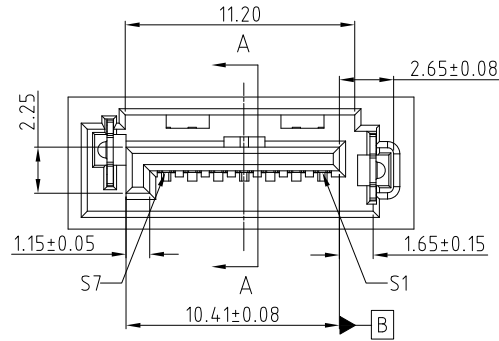
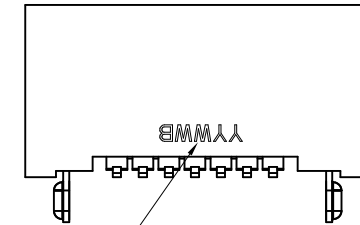
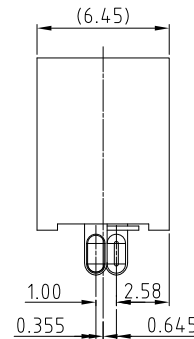
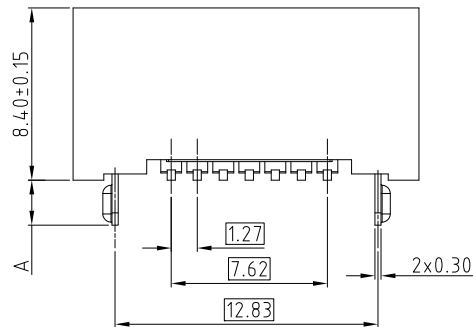
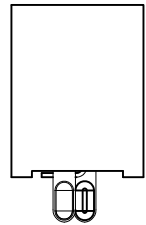
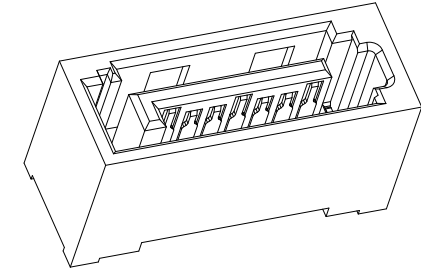


This document is the property of Amphenol Corporation and is delivered on the express condition that it is not to be disclosed, reproduced or used, in whole or in part, for manufacture or sale by anyone other than Amphenol Corporation without its prior consent, & that no right is granted to disclose or to use any information in this document.

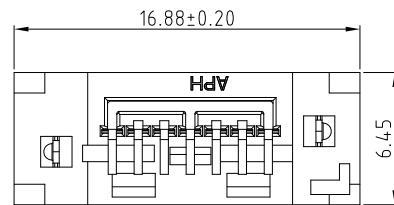
REVISIONS				
SYM	ECN	DESCRIPTION	DATE	APPROVED
1	HK---	FIRST RELEASE	9/23/2016	Xiang
2	HK---	ADD THE SPEC OF THE DAMAGE RETENTION FORCE	9/29/2016	Xiang
3	HKXXXX	UPDATED VERSION MARK TO "B" BY CUSTOMER REQUEST	12/19/2016	Xiang
4	HKXXXX	ADDED OPERATION TEMPERATURE	01/09/2017	Xiang
5	HK7506	CORRECTED OPERATION TEMPERATURE	01/13/2017	Xiang
6	HKXXXX	UPDATE TABLE-1 INFORMATION	03/01/2017	Xiang
7	HKXXXX	ADD PACKING DRAWING	03/19/2018	Xiang
8	HKXXXX	ADD A NOTCH MARK ON PICK-UP CAP	04/16/2018	Xiang
9	HKXXXX	ADD THE DIMENSION OF THE OUTLINE OF THE HOUSING	10/19/2020	Xiang
10	HKXXXX	ADD THE PIN CONFIGURATION	02/22/2021	Xiang
11	HKXXXX	ADD THE DIMENSION OF THE OUTLINE OF THE HOUSING	03/11/2022	Xiang
12	HKXXXX	CHANGE THE POSITION OF THE D/C CODE MARK	05/17/2022	Xiang



SECTION A-A



Date Code:YYWW B
 Year
 Week
 Version mark



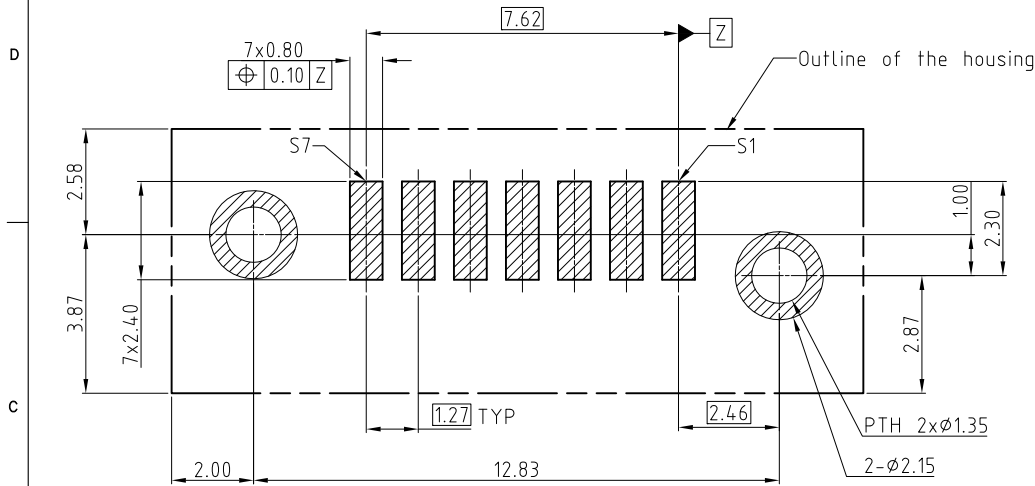
HF(无卤)	✓
Non-HF(有卤)	

CUSTOMER DRAWING

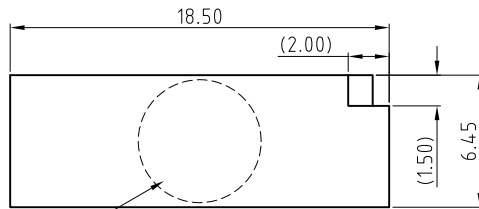
UNLESS OTHERWISE SPECIFIED TOLERANCES		APPROVAL		DATE	Amphenol Amphenol East Asia Limited
U.S. METRIC		DRAWN	Evon.Dai	04/16/18	
.X	+/-	CHECKED			TITLE Customer Drawing For 12G SATA 7P V/I SMT PLUG
.XX	+/-	CHECKED			
.XXX	+/-				DRAWING FILE : Drawing\SAT3\SAT3M32303XXX-B
FRACTIONS	+/-				
ANGLES	+/-				DRAWING NO. SAT3-M323-203-XXX
FOR MATERIALS AND FINISHES SEE NOTES					
REMOVE SHARP EDGES		ANGLE OF PROJECTION			REV. 12
DIMENSIONS		U.S. INCHES		SCALE NONE	SHEET 1 OF 3
(METRIC)	(MM)				

This document is the property of Amphenol Corporation and is delivered on the express condition that it is not to be disclosed, reproduced or used, in whole or in part, for manufacture or sale by anyone other than Amphenol Corporation without its prior consent, & that no right is granted to disclose or to use any information in this document.

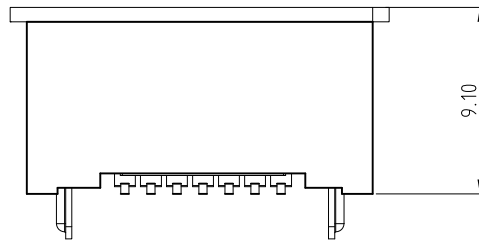
REVISIONS				
SYM	ECN	DESCRIPTION	DATE	APPROVED
REFER TO SHEET 1				



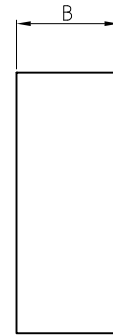
RECOMMENDED PCB LAYOUT
SCALE 2:1 GENERAL TOLERANCE ±0.05mm



ø6mm PICK-UP AREA



Overview with Cap



SOLDER TAB LENGTH & PCB THICKNESS
REFER TO TABLE-1

MATING AREA PLATING
1- 0.76um MIN Au.
2- 0.38um MIN Au.
3- Gold FLASH

PACKING STYLE
NIL- TRAY
TR- TAPE AND REEL

NOTES:

- MATERIAL:
HOUSING: HIGH TEMPERATURE THERMOPLASTIC UL94V-0, COLOR: BLUE.
CONTACTS: BRASS;
PLATING: REFER TO PN SYSTEM ON MATING AREA;
1.27um MIN NICKEL UNDERPLATED OVERALL;
2.54um MATTE PURE TIN ON SOLDER TAILS.
SOLDER CLIP: BRASS;
PLATING: 2.54um MIN MATTE PURE TIN OVER
1.27um MIN NICKEL UNDERPLATED.
- GENERAL SPECIFICATION:
CURRENT RATING: 1.5A (POWER SECTION);
CONTACT RESISTANCE: 30mΩ MAX.
INSULATOR RESISTANCE: 1000MΩ MIN.
DIELECTRIC WITHSTANDING VOLTAGE: 500 VAC
OPERATION TEMPERATURE: -20°C~+85°C
- DIMENSIONING SHALL BE INTERPRETED PER ASME Y14.5M 1994
- MATERIAL SHOULD BE FULFILLED AMPHENOL SPEC.# S-SN-002, HALOGEN FREE PRODUCTS ALSO NEED TO MEET #S-SN-004
- THE DAMAGE RETENTION FORCE OF THE CONNECTOR IS 95N MIN
- ORDER PN SYSTEM: x PN WITH/WITHOUT "-" IS THE SAME
SAT3-M323-203-X-XX



TABLE-1:

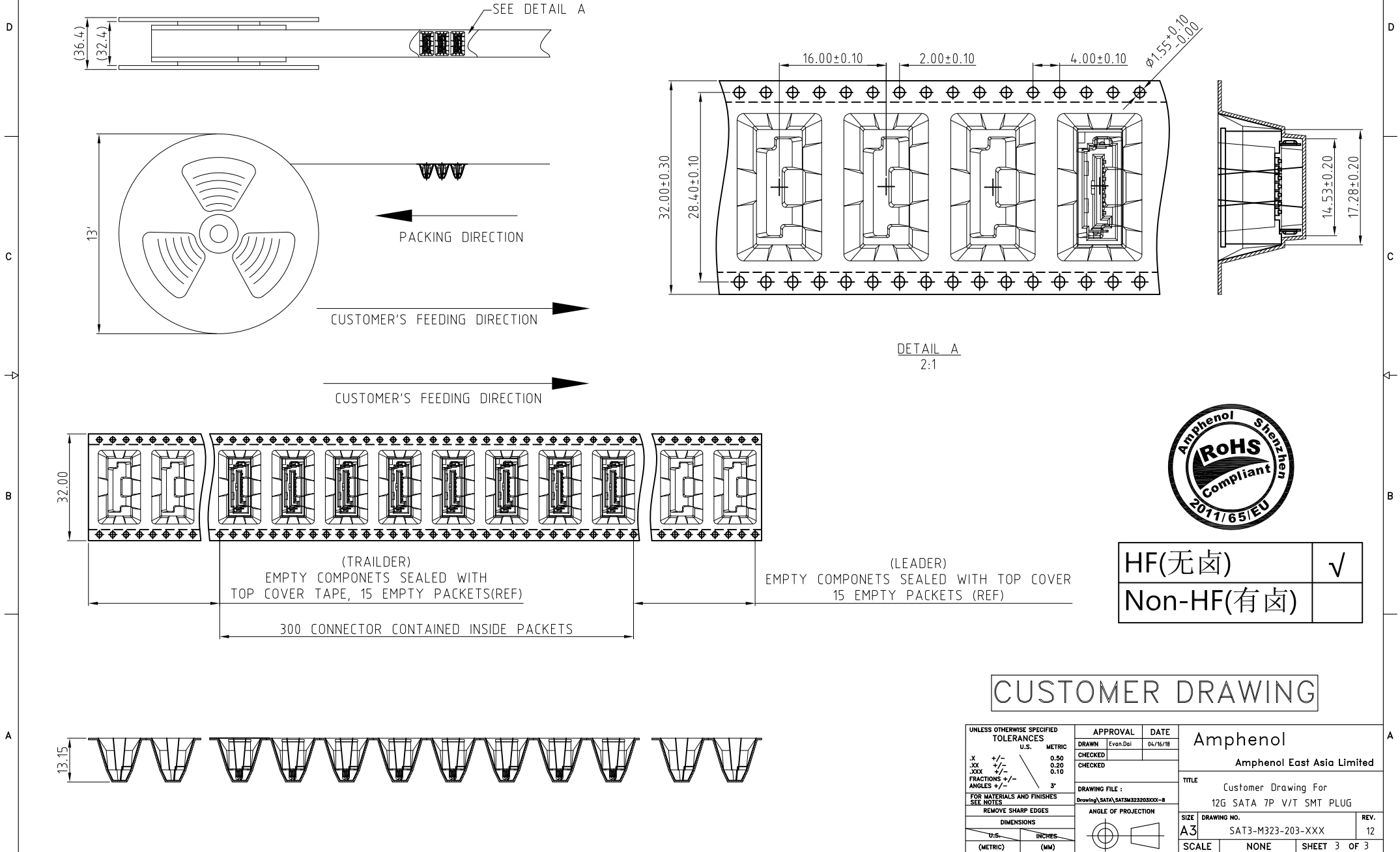
Series NO#	DIM. A (Solder tab length)	DIM. B (PCB Thickness)
03	2.20mm	2.30mm/2.50mm
04	2.85mm	3.20mm

CUSTOMER DRAWING

UNLESS OTHERWISE SPECIFIED TOLERANCES		APPROVAL		DATE	
DRAWN	Evon.Dai			04/16/18	
CHECKED					
CHECKED					
DRAWING FILE :				TITLE	
Drawing\SATA\SAT3M3230300X-B				Customer Drawing For	
REMOVE SHARP EDGES				12G SATA 7P V/T SMT PLUG	
ANGLE OF PROJECTION				DRAWING NO.	
U.S. INCHES				A3 SAT3-M323-203-XXX	
(METRIC) (MM)				REV. 12	
SCALE		NONE		SHEET 2 OF 3	

This document is the property of Amphenol Corporation and is delivered on the express condition that it is not to be disclosed, reproduced or used, in whole or in part, for manufacture or sale by anyone other than Amphenol Corporation without its prior consent, & that no right is granted to disclose or to use any information in this document.

REVISIONS				
SYM	ECN	DESCRIPTION	DATE	APPROVED
REFER TO SHEET 1				



HF(无卤)	√
Non-HF(有卤)	

CUSTOMER DRAWING

UNLESS OTHERWISE SPECIFIED TOLERANCES U.S. METRIC .X +/- 0.50 .XX +/- 0.20 .XXX +/- 0.10 FRACTIONS +/- ANGLES +/- 3° FOR MATERIALS AND FINISHES SEE NOTES REMOVE SHARP EDGES DIMENSIONS U.S. INCHES (METRIC) (MM)	APPROVAL DRAWN: Evan.Dai CHECKED: CHECKED:	DATE 04/16/18	Amphenol Amphenol East Asia Limited TITLE: Customer Drawing For 12G SATA 7P V/I SMT PLUG SIZE: A3 DRAWING NO.: SAT3-M323-203-XXX SCALE: NONE SHEET 3 OF 3
	DRAWING FILE: Drawing\SATA\SAT3M3230300X-8		
	ANGLE OF PROJECTION 		
	REV. 12		