



## Prototyping Plate (Square)

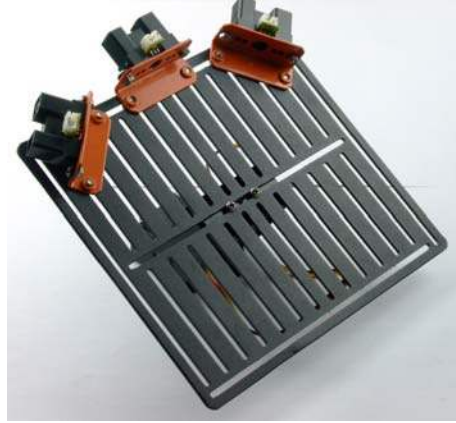
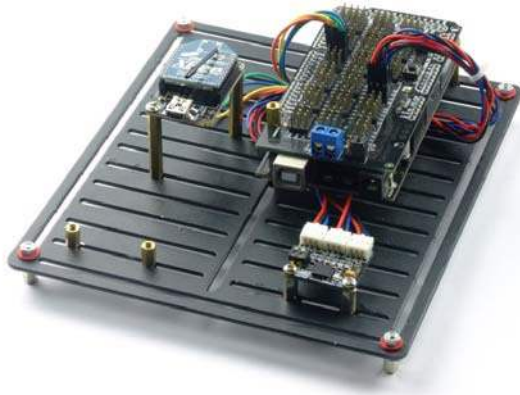
SKU:FIT0101



### INTRODUCTION

This is a really easy use prototyping plate. Basically you can put everything from Arduino board to sensors, even a motor on top of it. It fits M2-M3 screws.

NOTE: This product does not ship with the board shown above. Please check the shipping list below for reference.



## SPECIFICATION

- Size:170x150mm (7x5.9")
- Slot size:3mm (0.1")
- Total weight:350g (including all screws)

## SHIPPING LIST

- Prototyping Plate ×1
- M3 screw set ×50
- M3 \* 10 Hexagonal Copper standoffs ×10
- M3 \* 10 Hexagonal Nylon standoffs ×10
- M3 \* 20 Hexagonal Nylon standoffs ×10
- M3 \* 30 Hexagonal Copper standoffs ×10
- M3 \* 50 Hexagonal Copper standoffs ×10