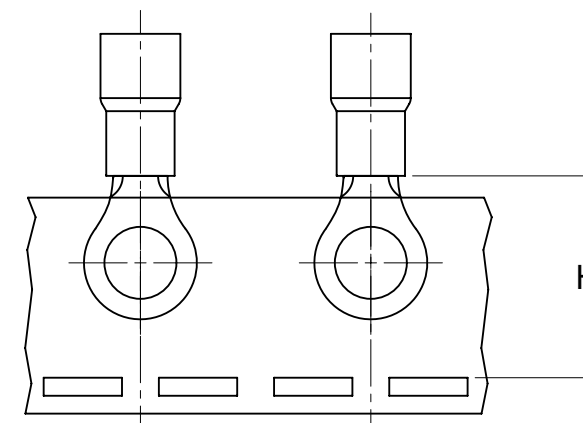
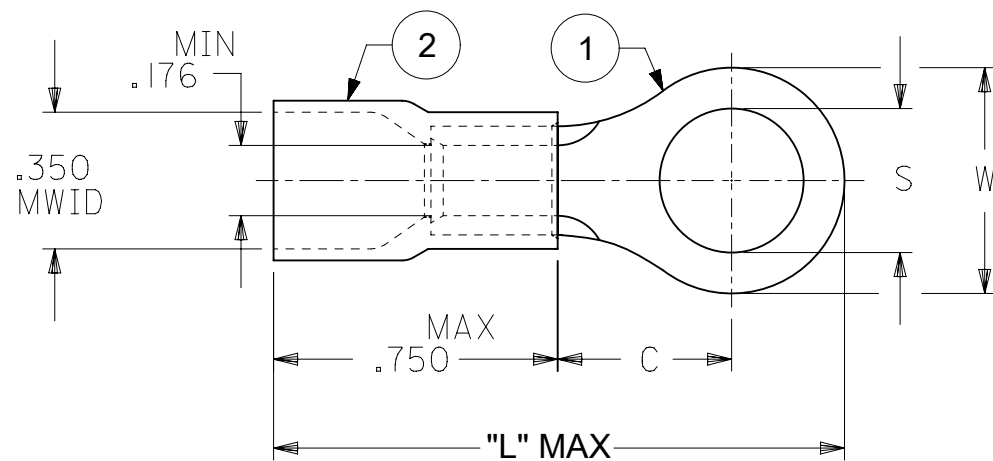


MATERIAL NO., LOOSE PC	ENGINEERING P/N	MATERIAL NO. (TAPE)	ENGINEERING P/N	W ±.010	C MIN	"L" MAX	THKNS, REF	S ±.005	H NOMINAL
190670001	D-950-06	---- (A2)	----	.468/11.89	.380/9.65	1.41 (35.8)	.045/1.14	.146/3.71	-
190670003	D-950-08	190670005	D-950-08T	.468/11.89	.380/9.65	1.41 (35.8)	.045/1.14	.173/4.39	1.07/27.2
190670006	D-950-10	190670007	D-950-10T	.468/11.89	.380/9.65	1.41 (35.8)	.045/1.14	.198/5.03	
190670008	D-950-14	190670011	D-950-14T	.468/11.89	.380/9.65	1.41 (35.8)	.045/1.14	.265/6.73	
190670012	D-950-56	190670013	D-950-56T	.468/11.89	.380/9.65	1.41 (35.8)	.045/1.14	.328/8.33	
190670016	D-951-10	190670017	D-951-10T	.588/14.94	.445/11.30	1.54 (39.1)	.045/1.14	.198/5.03	1.07/27.2
190670018	D-951-14	---- (A2)	----	.588/14.94	.445/11.30	1.54 (39.1)	.045/1.14	.265/6.73	-
190670025	D-951-56	190670026	D-951-56T	.588/14.94	.445/11.30	1.54 (39.1)	.045/1.14	.328/8.33	1.07/27.2
190670022	D-951-38	190670024	D-951-38T	.588/14.94	.445/11.30	1.54 (39.1)	.045/1.14	.390/9.91	
190670128	D-951-76	---- (A2)	----	.588/14.94	.445/11.30	1.54 (39.1)	.045/1.14	.453/11.51	-
190670030	D-952-38	-	-	.810/20.57	.628/15.95	1.84 (46.7)	.050/1.27	.390/9.91	-
190670031	D-952-76	-	-	.810/20.57	.628/15.95	1.84 (46.7)	.050/1.27	.453/11.51	-
190670028	D-952-12	190670328	D-952-12T	.810/20.57	.628/15.95	1.84 (46.7)	.050/1.27	.515/13.08	1.40/35.6
190670129	D-952-58	---- (A2)	----	.810/20.57	.628/15.95	1.84 (46.7)	.050/1.27	.656/16.66	-
190670032	D-953-12	-	-	1.125/28.58	1.005/25.53	2.37 (60.2)	.050/1.27	.515/13.08	-
190670034	D-953-58	-	-	1.125/28.58	1.005/25.53	2.37 (60.2)	.050/1.27	.656/16.66	-
190670033	D-953-34	-	-	1.125/28.58	1.005/25.53	2.37 (60.2)	.050/1.27	.781/19.84	-
190670035	D-956-06	---- (A2)	----	.374/9.50	.380/9.65	1.36 (34.5)	.045/1.14	.146/3.71	-
190670037	D-956-08	190670038	D-956-08T	.374/9.50	.380/9.65	1.36 (34.5)	.045/1.14	.173/4.39	1.07/27.2
190670039	D-956-10	190670040	D-956-10T	.374/9.50	.380/9.65	1.36 (34.5)	.045/1.14	.198/5.03	
190670041	D-956-14	190670042	D-956-14T	.374/9.50	.380/9.65	1.36 (34.5)	.045/1.14	.265/6.73	



FOR TAPE APPLIED
PART NUMBERS

NOTE(S):

- MATERIAL: ITEM ① - COPPER, ELECTRO-TIN PLATED
ITEM ② - MOLDED NYLON, RED
- ASSEMBLY IS RoHS COMPLIANT.
- MWID = MAXIMUM WIRE INSULATION DIAMETER.

FUNCTIONAL SYMBOLS FA=0 FE=0 FF=0	THIS DRAWING CONTAINS INFORMATION THAT IS PROPRIETARY TO MOLEX ELECTRONIC TECHNOLOGIES, LLC AND SHOULD NOT BE USED WITHOUT WRITTEN PERMISSION		CURRENT REV DESC: OAL "L" DIM'S UPDATED		
	DIMENSION UNITS	SCALE	EC NO: 682401		
	mm	NTS	DRWN: DMYRICK	2021/10/21	
	GENERAL TOLERANCES (UNLESS SPECIFIED)		CHKD: KBURROUGHS	2021/10/25	
DIVISIONAL SYMBOLS	MM	INCH	APPR: KBURROUGHS	2021/10/25	PRODUCT CUSTOMER DRAWING
4 PLACES ±	±	±	INITIAL REVISION:	DOCUMENT NUMBER	DOC TYPE
3 PLACES ±	±	±	DRWN: EHILE	2007/08/22	PSD
2 PLACES ±	±	±	APPR: JMACNEIL	2007/09/19	001
1 PLACE ±	±	±	THIRD ANGLE PROJECTION	DRAWING	REVISION
0 PLACES ±	±	±	DRWING	SERIES	A2
ANGULAR TOL ± °	± °		B-SIZE	19067	
DRAFT WHERE APPLICABLE MUST REMAIN WITHIN DIMENSIONS			SEE CHART	GENERAL MARKET	SHEET NUMBER
					1 OF 1