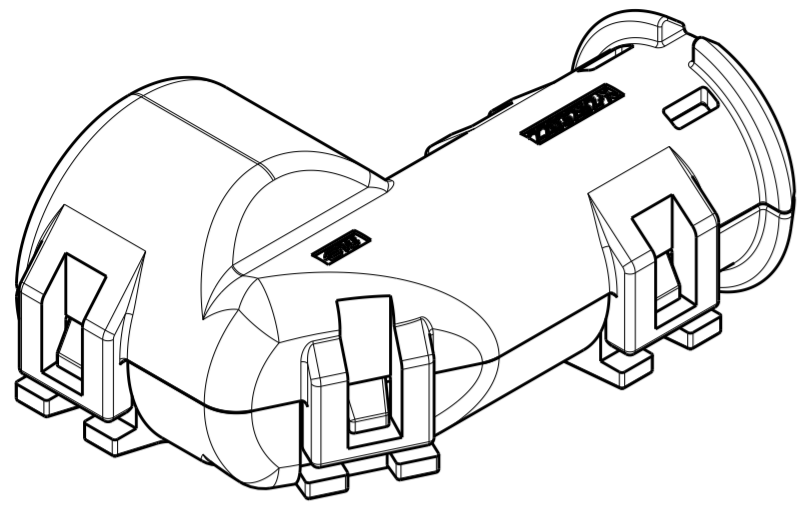
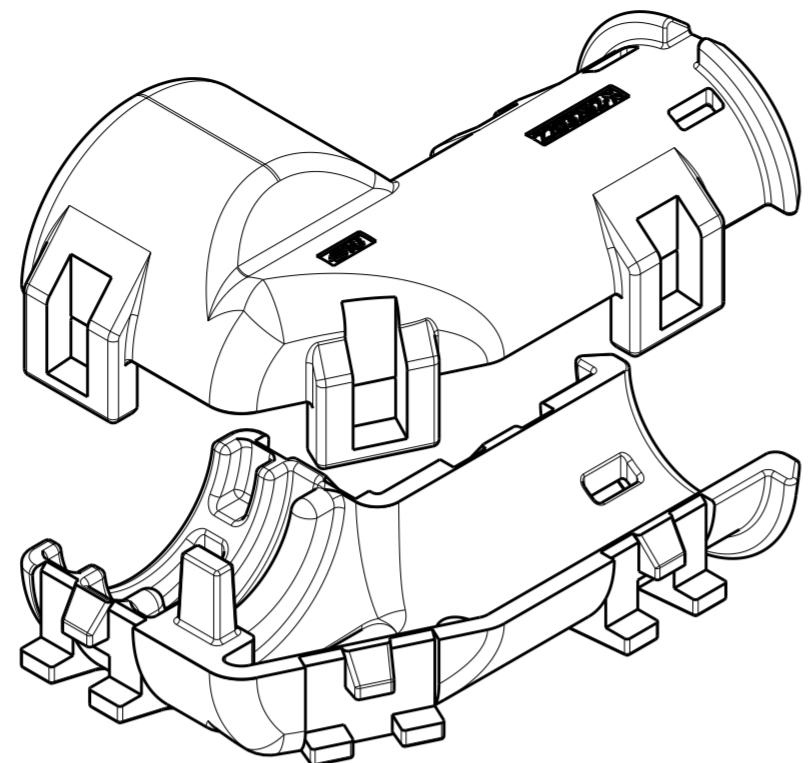


THIS DRAWING IS UNPUBLISHED. RELEASED FOR PUBLICATION 20
 © COPYRIGHT 20 BY - ALL RIGHTS RESERVED.

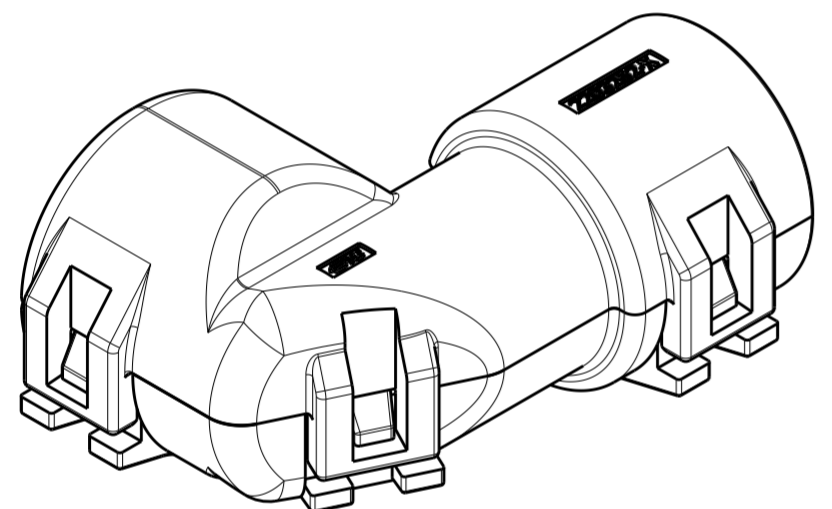
REVISIONS				
P	LTR	DESCRIPTION	DATE	APVD
A		RELEASED PER ECO-15-010501	17JUL2015	JM RB



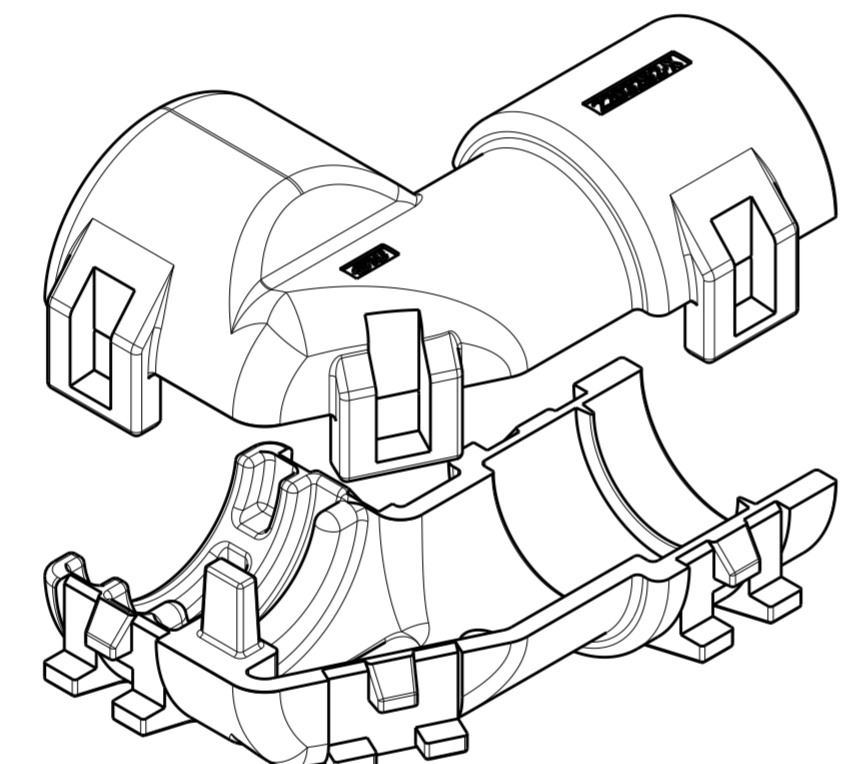
2292850-1
ASSEMBLED ISOMETRIC VIEW SHOWN



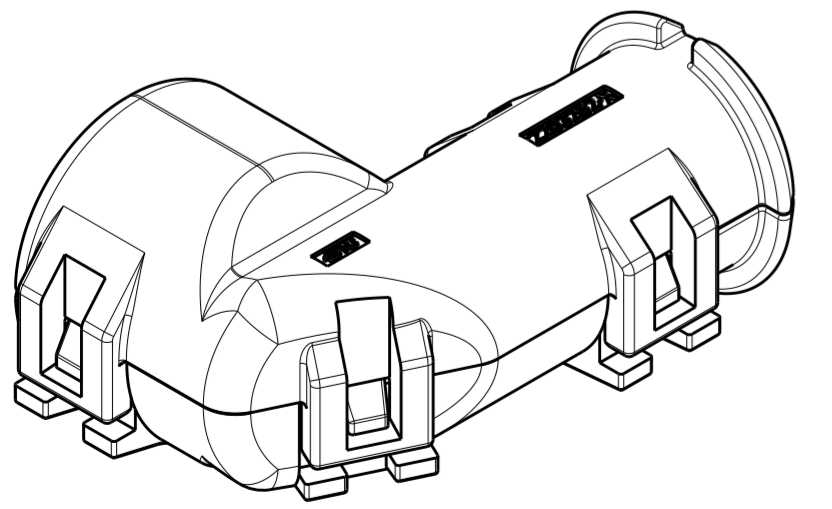
2292850-1
EXPLODED ISOMETRIC VIEW SHOWN



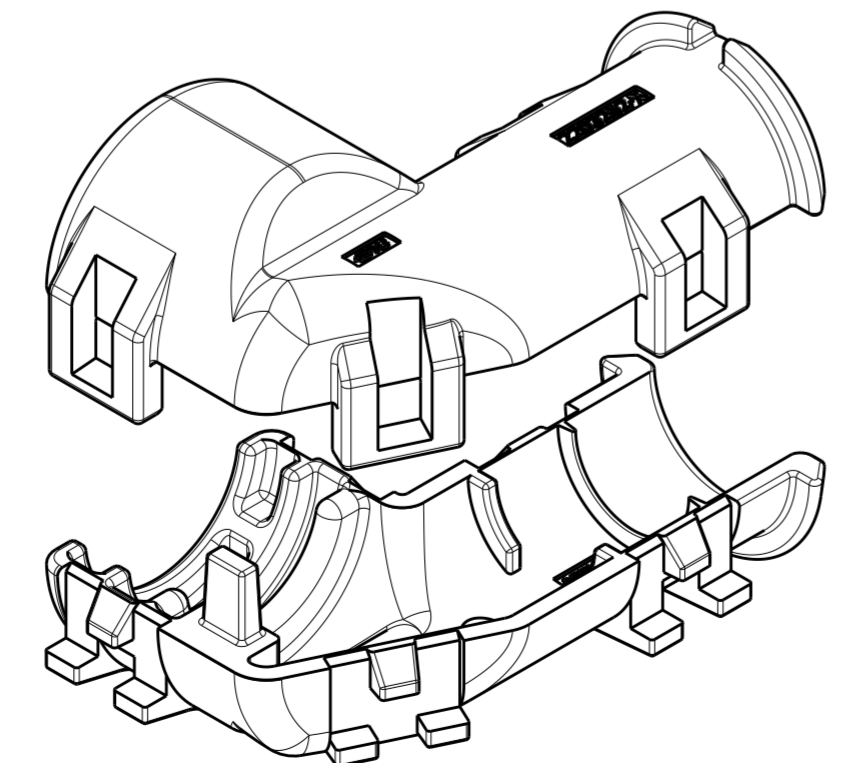
2292850-2
ASSEMBLED ISOMETRIC VIEW SHOWN



2292850-2
EXPLODED ISOMETRIC VIEW SHOWN



2292850-3
ASSEMBLED ISOMETRIC VIEW SHOWN



2292850-3
EXPLODED ISOMETRIC VIEW SHOWN

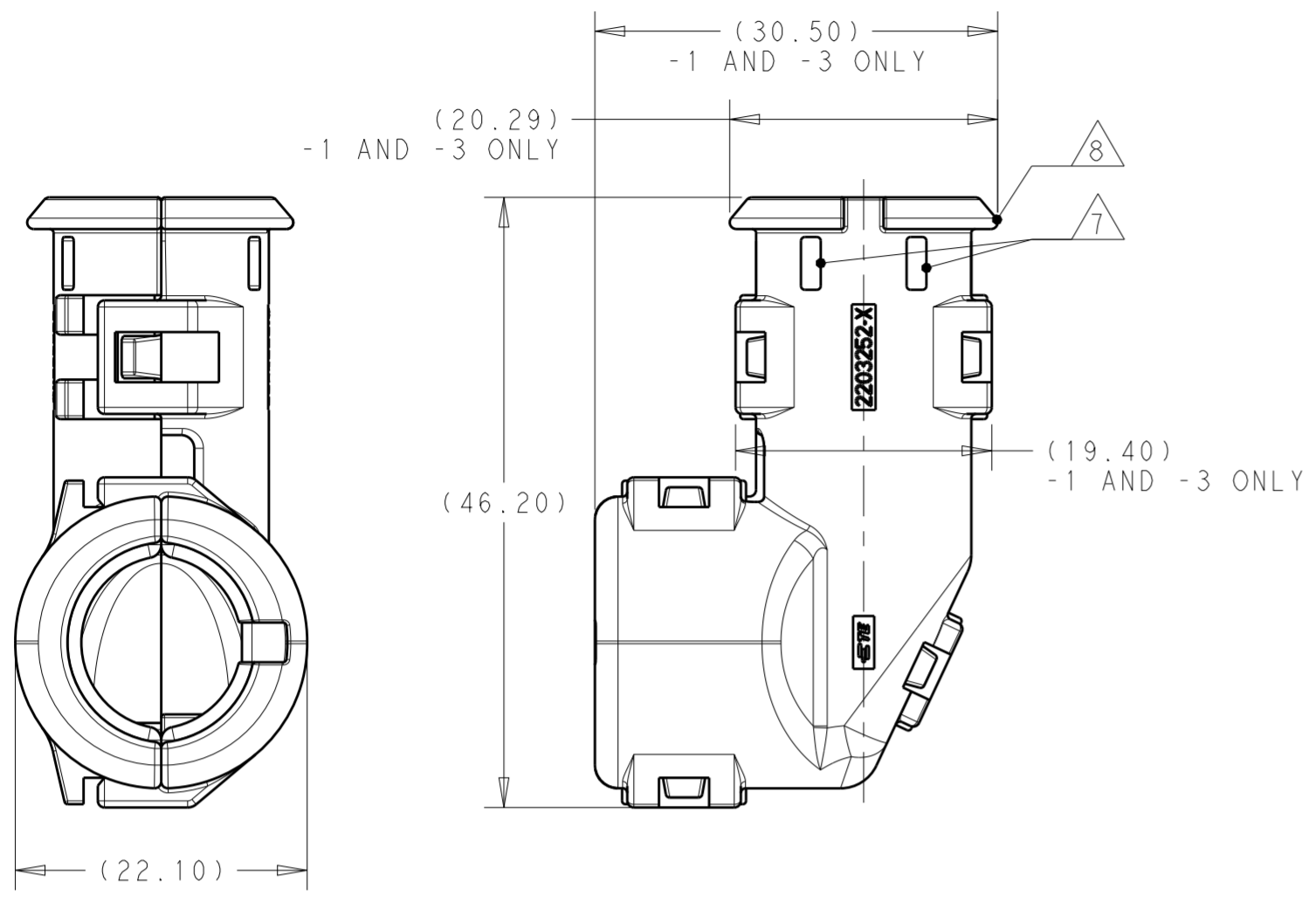
- 1 MATERIAL: NYLON MOLDING COMPOUND, BLACK, PA66/6.
- 2 ELBOWS DESIGNED SUCH THAT TWO HALVES ATTACH TO ONE ANOTHER AND CLAMSHELL AROUND THE BACKSHELL.
- 3 DIMENSIONS TO BE MEASURED WHEN ELBOWS ASSEMBLED.
- 4 SMOOTH EXIT BACKSHELL IS ONLY BACKSHELL THAT ACCEPTS THESE 90° ELBOWS. SEE TABLE.
- 5 NOT SHOWN.
- 6 PRODUCT WEIGHTS:
 2292850-1: 6.48g ASSEMBLED
 2292850-2: 7.25g ASSEMBLED
 2292850-3: 6.60g ASSEMBLED
- 7 4mm WIDE SLOTS FOR TIE WRAP TO SECURE HARNESS WIRES (-1 ONLY).
- 8 HEAT SHRINK TUBING RETENTION FEATURE (-1 AND -3 ONLY).

2272800-X FOR PLUG SIDE	5	2292799-X FOR PLUG SIDE	4	NC12	NW10	2292850-3
2292863-X FOR CAP SIDE	5	2292862-X FOR CAP SIDE	5	NC16	NW13	2292850-2
				SMOOTH	SMOOTH	2292850-1
FITS ON 6 POSN BACKSHELLS		FITS ON 4 POSN BACKSHELLS		CORREGATE NC	CORREGATE NW	PART NUMBER
						CONDUIT SIZE

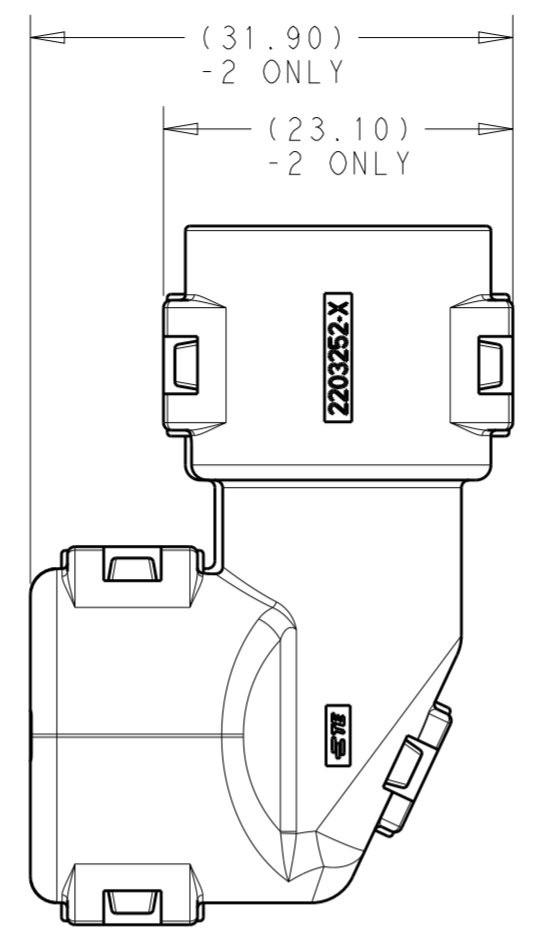
THIS DRAWING IS A CONTROLLED DOCUMENT.		DWN J. MCNEAL 21MAY2015	TE Connectivity															
DIMENSIONS: mm [INCHES]		CHK R. BALTER 21MAY2015																
TOLERANCES UNLESS OTHERWISE SPECIFIED:		APVD R. BALTER 21MAY2015																
<table border="1"> <tr><td>0 PLC</td><td>±</td></tr> <tr><td>1 PLC</td><td>±</td></tr> <tr><td>2 PLC</td><td>±</td></tr> <tr><td>3 PLC</td><td>±</td></tr> <tr><td>4 PLC</td><td>±</td></tr> <tr><td>ANGLES</td><td>±</td></tr> <tr><td>FINISH</td><td>±</td></tr> </table>		0 PLC	±	1 PLC	±	2 PLC	±	3 PLC	±	4 PLC	±	ANGLES	±	FINISH	±	PRODUCT SPEC	NAME ELBOW, 4 AND 6 POSITION ASSEMBLY AMPSEAL 16	
0 PLC	±																	
1 PLC	±																	
2 PLC	±																	
3 PLC	±																	
4 PLC	±																	
ANGLES	±																	
FINISH	±																	
MATERIAL	-	APPLICATION SPEC	SIZE	CAGE CODE														
	1	WEIGHT	A200779	DRAWING NO														
		CUSTOMER DRAWING	C-2292850															
		SCALE	2:1	SHEET 1 OF 2														
				REV A														

THIS DRAWING IS UNPUBLISHED. RELEASED FOR PUBLICATION 20
 © COPYRIGHT 20 BY - ALL RIGHTS RESERVED.

REVISIONS				
P	LTR	DESCRIPTION	DATE	APVD
-	-	SEE SHEET 1	-	-

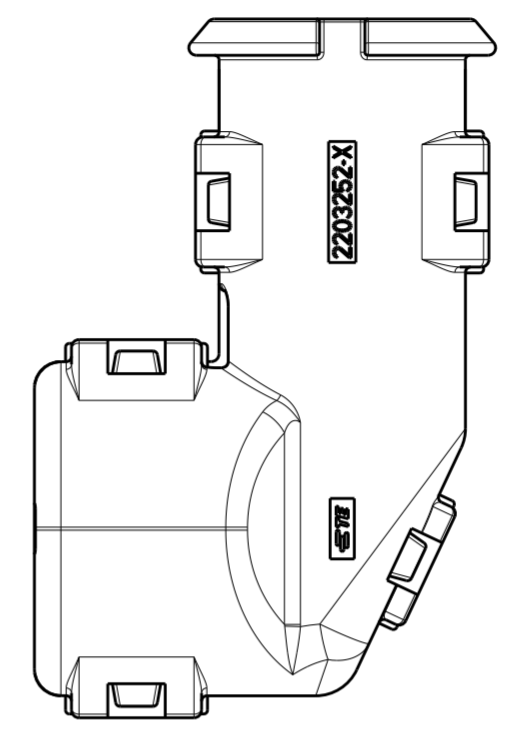


2292850-1
 ASSEMBLED VIEW SHOWN
 DIMENSIONS SHOWN TYPICAL FOR ALL PART NUMBERS
 EXCEPT AS NOTED

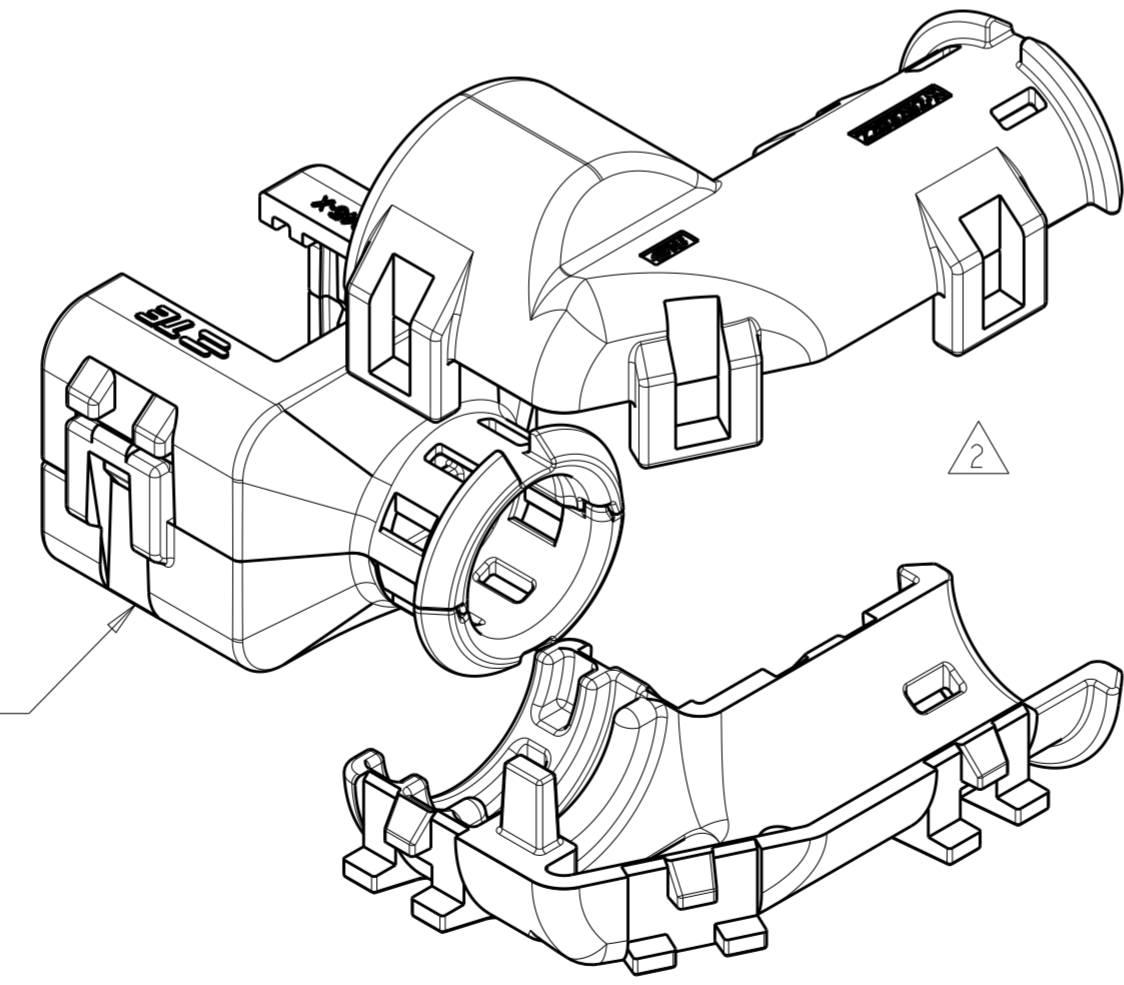


2292850-2
 ASSEMBLED VIEW SHOWN

DIMENSIONS SHOWN TYPICAL FOR -2 ONLY



2292850-3
 ASSEMBLED VIEW SHOWN



2292850-1
 WITH PLUG ASSEMBLY
 EXPLODED ISOMETRIC VIEW SHOWN
 ASSEMBLY TYPICAL FOR ALL PART NUMBERS

THIS DRAWING IS A CONTROLLED DOCUMENT.		DWN J. MCNEAL 21MAY2015	TE Connectivity	
DIMENSIONS: mm [INCHES]		CHK R. BALTER 21MAY2015		
TOLERANCES UNLESS OTHERWISE SPECIFIED:		APVD R. BALTER 21MAY2015	NAME ELBOW, 4 AND 6 POSITION ASSEMBLY AMPSEAL 16	
0 PLC ±		PRODUCT SPEC	SIZE CAGE CODE DRAWING NO RESTRICTED TO	
1 PLC ±		APPLICATION SPEC	A200779 C-2292850	
2 PLC ±		WEIGHT	SCALE 2:1 SHEET 2 OF 2 REV A	
3 PLC ±		CUSTOMER DRAWING		
4 PLC ±				
ANGLES ±				
FINISH				