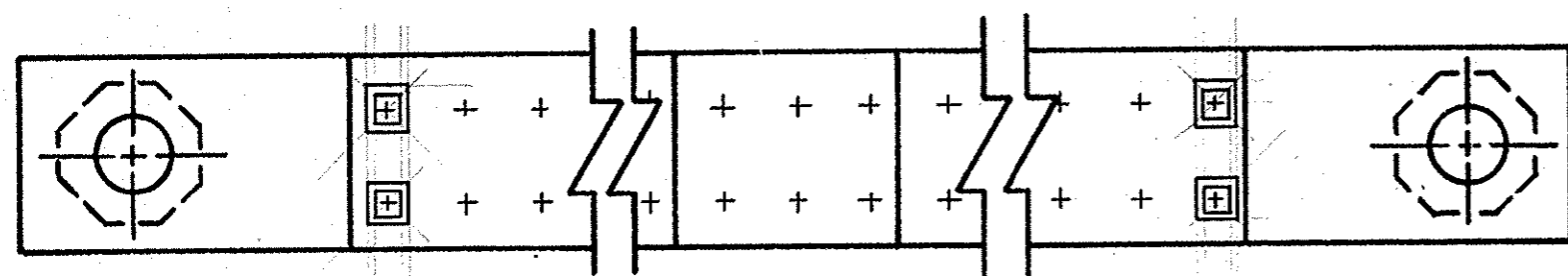
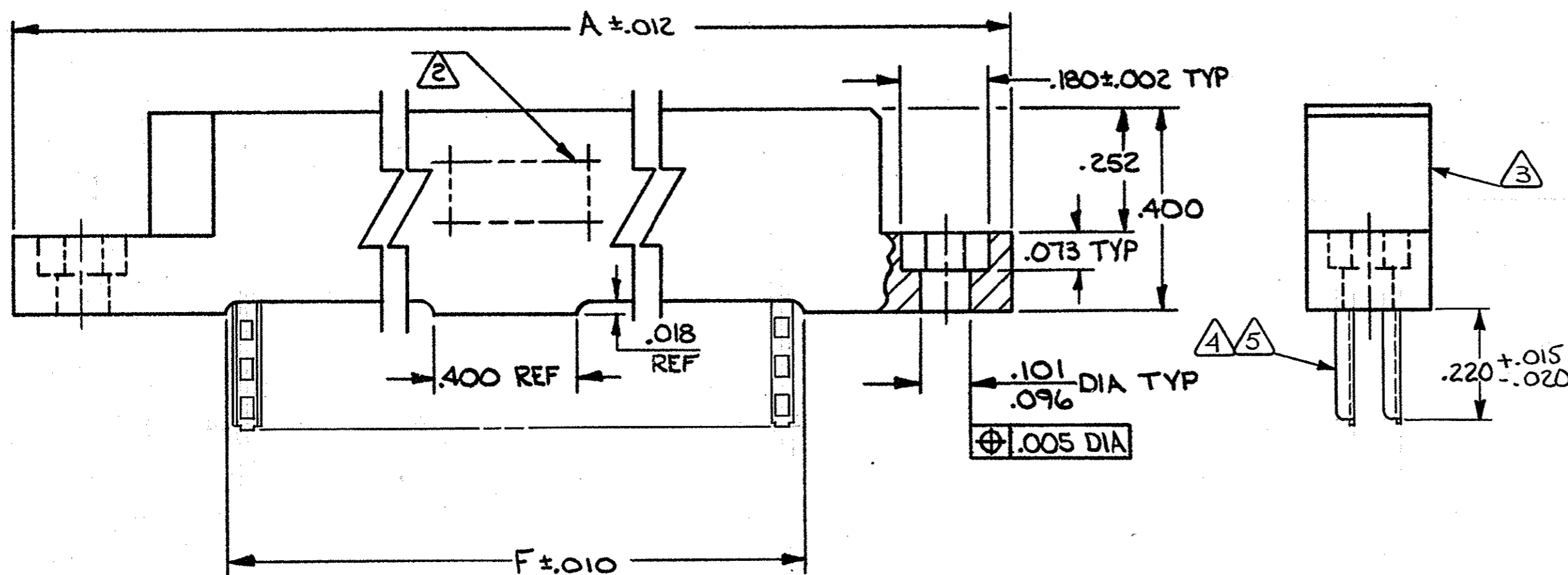
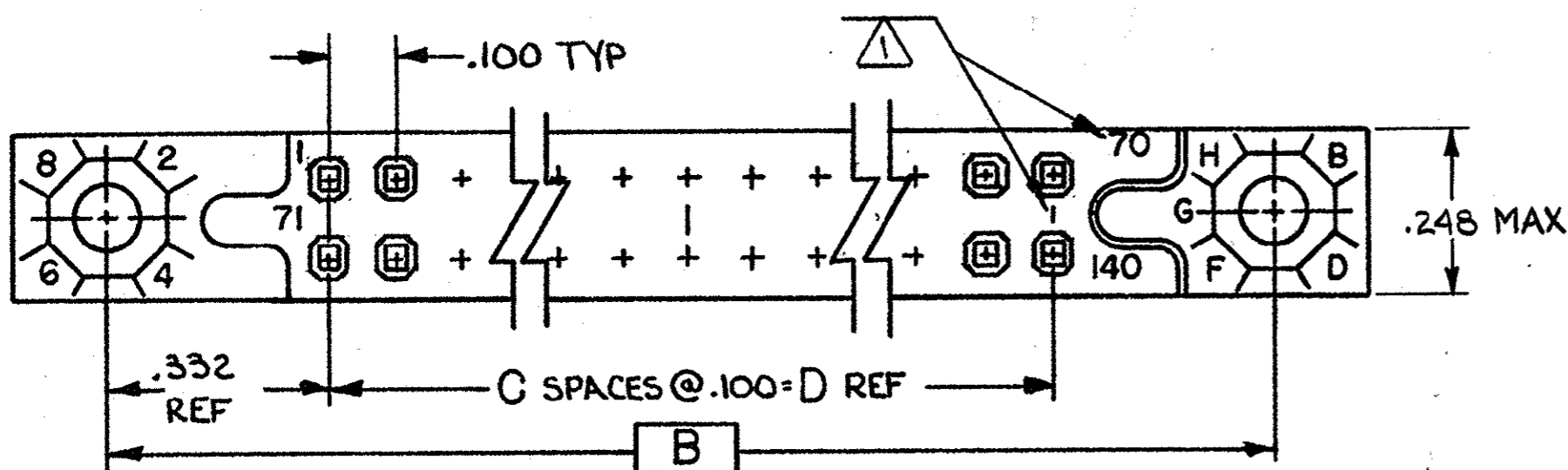


© COPYRIGHT 19 BY AMP INCORPORATED, HARRISBURG, PA.  
ALL INTERNATIONAL RIGHTS RESERVED. AMP INCORPORATED PRODUCTS  
COVERED BY U. S. AND FOREIGN PATENTS AND/OR PATENTS PENDING.

REVISIONS						
P	F	ZONE	LTR	DESCRIPTION	DATE	APPROVED
0	✓		O	REL.		
✓	✓		A	REV. PER ECM AB-0535	06 1-16-85	EAM
✓	✓		B	REV PER DF-00894DF0117	15 11/88	JLM
			C	REV 0600-5631-96	π 8-98	JLM
			D	REV 0600-5859-96	π 9-98	BEL
			E	REV 0600-6466-97	π 10-98	BEL
			F	REV PER ECO-05-013228	11-05	PY



- ① CAVITY IDENTIFICATION (SEE CHART) & LINES INDICATING EVERY 5<sup>th</sup> CAVITY MARKED OR MOLDED.
- ② AMP PART NO. & DATE CODE INK STAMPED (WHITE).
- ③ HOUSING MAT'L: DIALYL PHTHALATE  
COLOR: BLUE
- ④ CONTACT MAT'L: BERYLLIUM COPPER OR COPPER-NICKEL-SILICONE
- ⑤ CONTACT FINISH: .000030 GOLD IN CONTACT AREA  
OVER .000030 NICKEL ALL OVER, TIN-LEAD  
PLATED POSTS

OBSOLETE	1/71	70/140	6.975	6.900	69	7.565	7.855	140	1-531833-3
	1/68	67/134	6.675	6.600	66	7.265	7.555	134	1- A -2
OBSOLETE	1/66	65/130	6.475	6.400	64	7.065	7.355	130	1- -1
OBSOLETE	1/61	60/120	5.975	5.900	59	6.565	6.855	120	1- -0
OBSOLETE	1/56	55/110	5.475	5.400	54	6.065	6.355	110	-9
OBSOLETE	1/51	50/100	4.975	4.900	49	5.565	5.855	100	-8
OBSOLETE	1/46	45/90	4.475	4.400	44	5.065	5.355	90	-7
OBSOLETE	1/41	40/80	3.975	3.900	39	4.565	4.855	80	-6
OBSOLETE	1/36	35/70	3.475	3.400	34	4.065	4.355	70	-5
	1/31	30/60	2.975	2.900	29	3.565	3.855	60	-4
OBSOLETE	1/26	25/50	2.475	2.400	24	3.065	3.355	50	-3
OBSOLETE	1/21	20/40	1.975	1.900	19	2.565	2.855	40	-2
OBSOLETE	1/16	15/30	1.475	1.400	14	2.065	2.355	30	531833-1

CAVITY IDENTIFICATION		F	D	C	B	A	NO OF POS	PART NO
UNLESS OTHERWISE SPECIFIED DIMENSIONS ARE IN INCHES.		CONTRACT NO						
TOLERANCES ON:		DR						
DECIMALS ±.005		Debra Kelly 3-27-80						
ANGLES ±		CHK						
		Roy W. Dunbar 9/18/80						
MATERIAL		APPD						
③④		Roy W. Dunbar 9/11/80						
		APPD						
		E. Parsons 9-19-80						
FINISH		DSGN APPD						
⑤		OTHER APPD						
		AMP		AMP INCORPORATED Harrisburg, Pa.				
		NAME						
		RECEPTACLE ASSEMBLY BOX CONNECTOR .100¢ SOLDER OR WELD TYPE POSTS						
		SIZE		CODE IDENT NO		DRAWING NO		
		C		00779		531833		
		SCALE 4:1					SHEET   OF	

531833