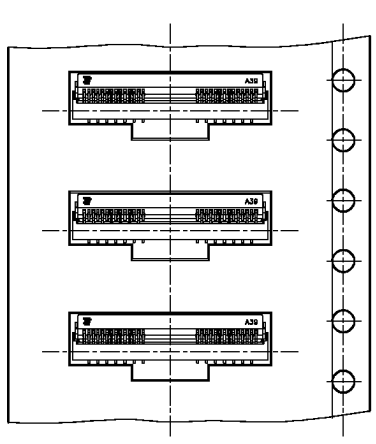
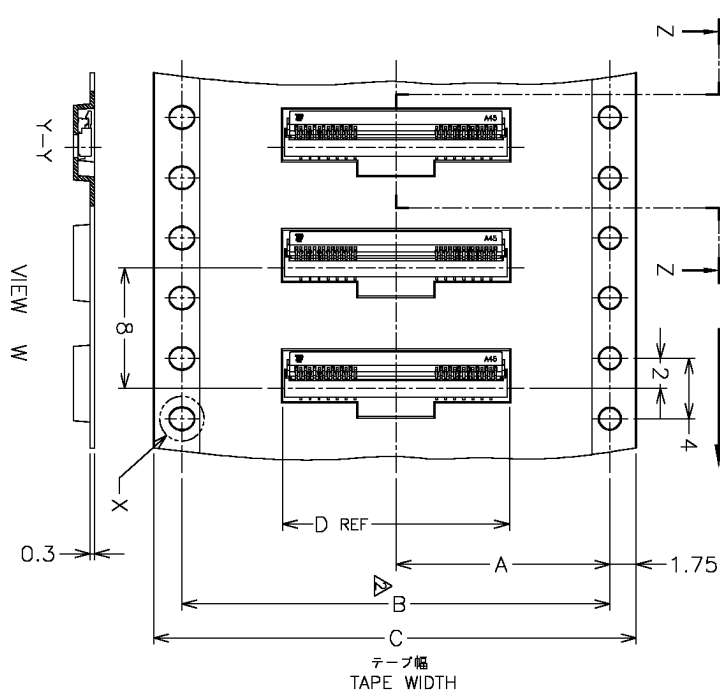
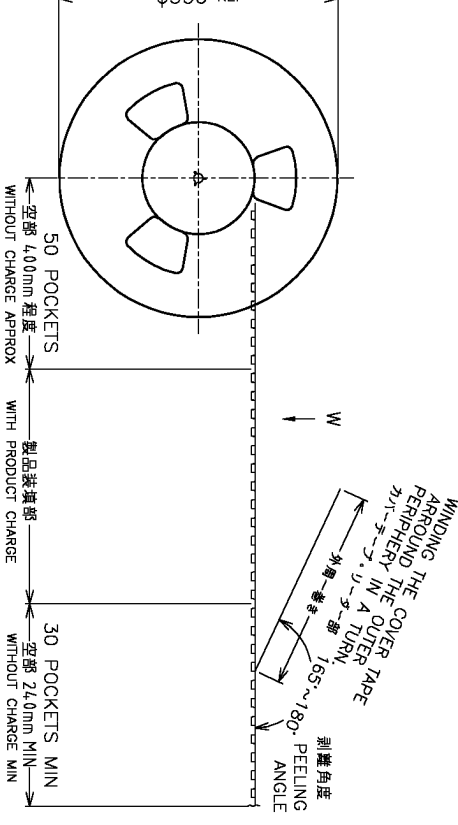
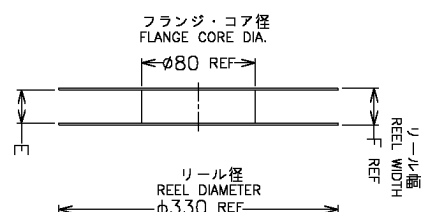
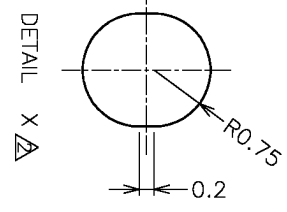


リール引出し方向
DIRECTION OFF TOP OF REEL



テープ幅 12mm, 16mm, 24mm に適用
APPLIED TAPE WIDTH 12MM, 16MM AND 24MM.



△ 一般公差
10以下: ±0.2
10を越え 30以下: ±0.25
30を越え 100以下: ±0.3
角 度: ±5°
B时注記の"X"詳細図中、
テープ幅32mm以上に適用

△ GENERAL TOLERANCE
10≦: ±0.2
30 ≧ > 10: ±0.25
100 ≧ > 30: ±0.3
ANGLES: ±5°
DIM. B AND DETAIL "X" APPLIED
TAPE WIDE, 32mm MORE.

| AVAILABLE | 0.066g | 30.4 | 25.5 | 15.05 | 24 | — | 11.5 | 4000 | 45 | 1-1827827-8 |
|-----------|------------------|------|------|-------|----|---|------|-------|---------|-----------------------------------|
| AVAILABLE | 0.058g | 30.4 | 25.5 | 13.25 | 24 | — | 11.5 | 4000 | 39 | 1-1827827-5 |
| AVAILABLE | 0.039g | 23.5 | 17.5 | 9.05 | 16 | — | 7.5 | 4000 | 25 | 1827827-8 |
| AVAILABLE | 0.025g | 23.5 | 17.5 | 6.05 | 16 | — | 7.5 | 4000 | 15 | 1827827-3 |
| STATUS | CONNECTOR WEIGHT | F | E | D | C | B | A | 数量(ヶ) | POS.(N) | EMBOSS TAPE PACKAGING PART NUMBER |

THIS DRAWING IS A CONTROLLED DOCUMENT.

APPLICATOR: TOKAI KODAIRA (7AUG97), TOKAI KUSUHARA (7AUG97), TOKAI KUSUHARA (7AUG97)

DESIGNER: TOKAI KUSUHARA (7AUG97)

PROJECT SPEC: 108-78351

APPLICATION SPEC: 0.3FPC NARROW FF-L

SIZE: A3, CAGE CODE: 00779, DRAWING NO: 1827827

SCALE: NTS, SHEET: 1 OF 2, REV: C

RESTRICTED TO: —

APPROVED: T. KAWASOKI (7AUG97), Tyco Electronics AMP K.K., Kawasaki, Japan

