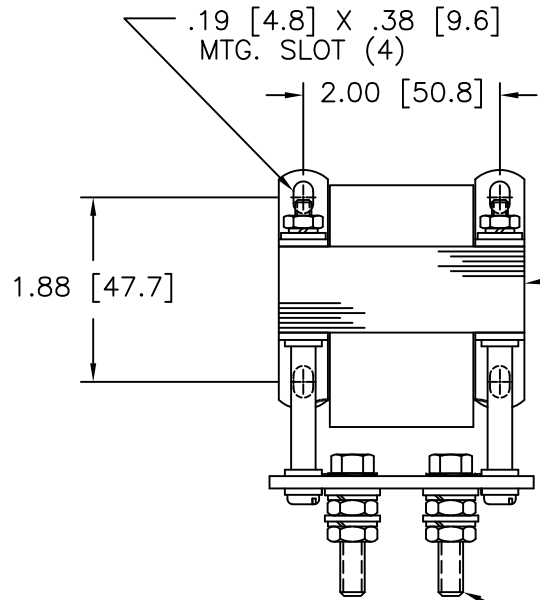
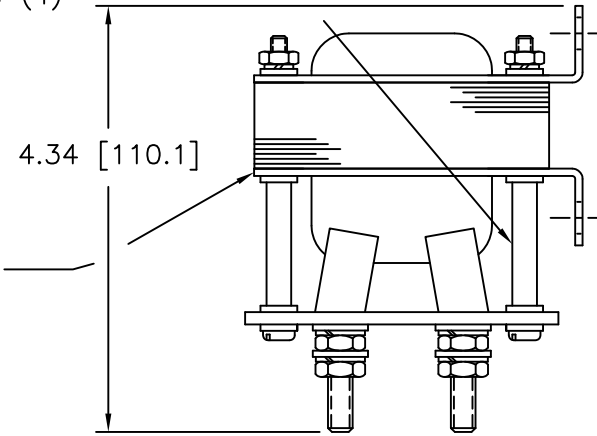


DWG. NO.	850-0180		
DWG. SIZE	C		
REVISIONS			
SYL.	E.C.N.	DATE	APVD.
P	24803	4/10/02	REDRAWN TO CAD
R	24950	9/12/02	REVISED & UPDATED



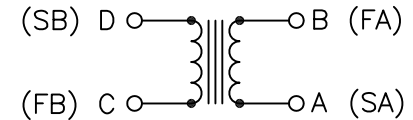
- 620-0908 SPACER (4)
- 596-0229-N6 #8-32 X 3 PHSMS (4)
- 732-0545-N6 #8 FWS (16)
- 732-0351-N6 #8 SLWS (4)
- 472-0101-N6 #8-32 HMSNS (4)



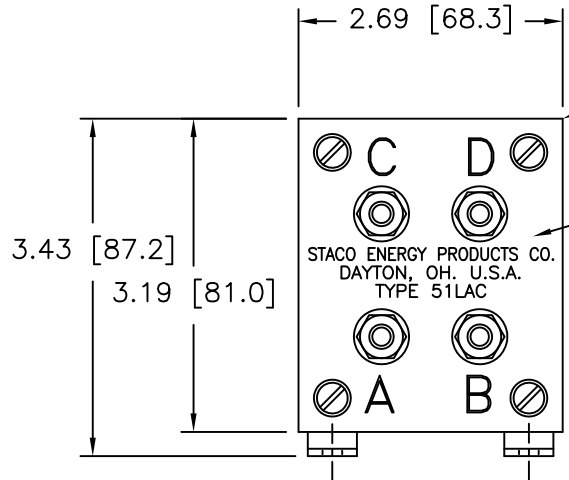
- 023-1488 CHOKE AS PUR.
- 273-0234 AS MOD. - PROC.

- 657-0018-C7 BRACKET (4)

- 596-2145-N6 1/4-20 X 1-1/4 HHSMS (4)
- 472-0163-N6 1/4-20 HMSNS X .156 THK. (8)
- 732-0381-N6 1/4 SLWS (8)
- 732-0565-N6 #12 FWS (8)

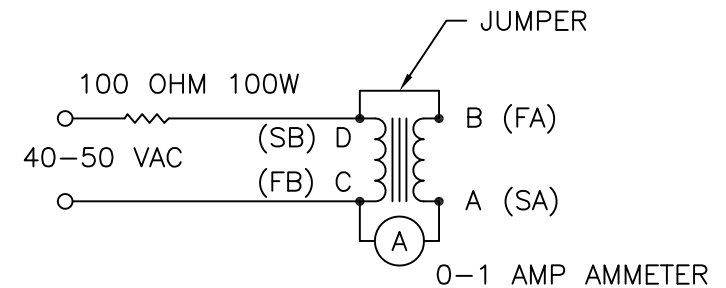


SCHEMATIC



- 682-0375 TERMINAL BOARD

- 639-1240 SCREEN



TEST CIRCUIT

READ APPROX. 0.2 AMPERES BETWEEN "C" AND "D" IF THE START AND FINISH OF EITHER WINDING IS REVERSED THE AMMETER WILL READ ZERO

UNLESS OTHERWISE SPECIFIED, TOLERANCE IS ±				UNITS	TITLE:				
DECIMALS	HOLES	ANGLES	DRAFT	IN [mm]	OUTLINE CHOKE				
.XX	.0005	1°	1-1/2°		TYPE: 51LAC				
MATERIAL:				ALL DIMENSIONS APPLY AFTER PLATING	DRAWN BY		DATE	FIRST USED ON	DO NOT SCALE DWG.
					TIM RAU		4/10/02		
The information and design disclosed herein was originated by and is the property of STACO ENERGY PRODUCTS CO., which reserves all patent, proprietary, design, manufacturing, reproduction, use and sole rights thereto, and to any article disclosed therein except to the extent rights are expressly granted to others. The foregoing does not apply to vendor proprietary parts.				CHECKER	DATE	WEIGHT APPROX.	CAGE CODE	DWG. SIZE	DWG. NO.
							83008	C	850-0180
				ENGINEER	DATE	SCALE	SHEET		
						1=1	1 OF 1		

