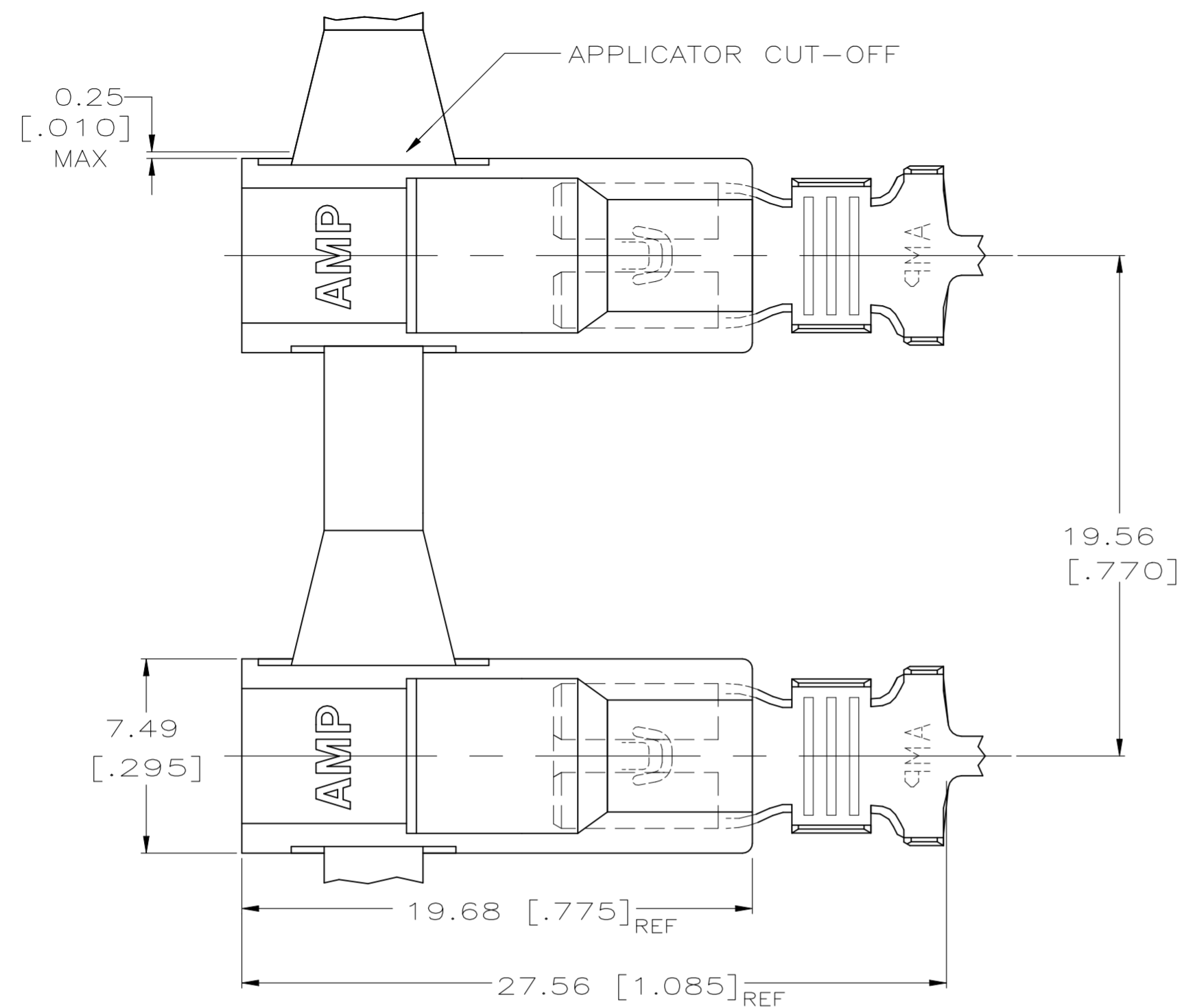
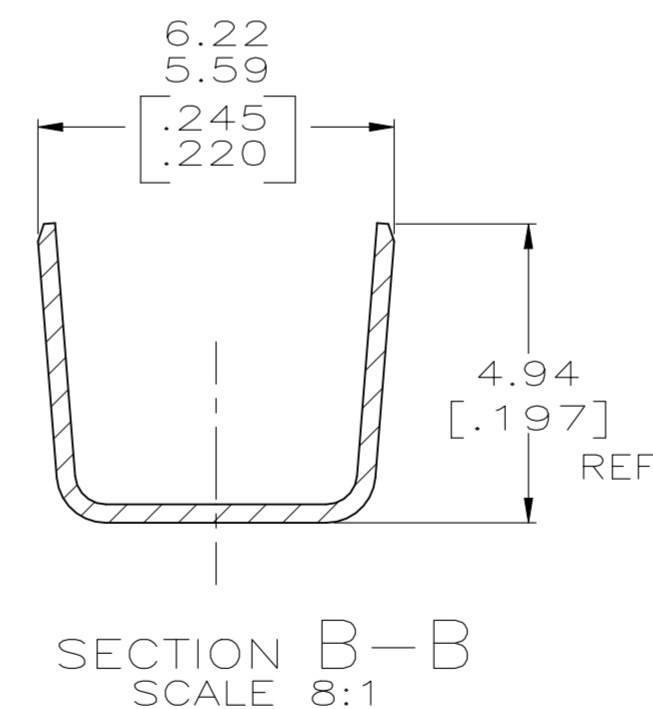
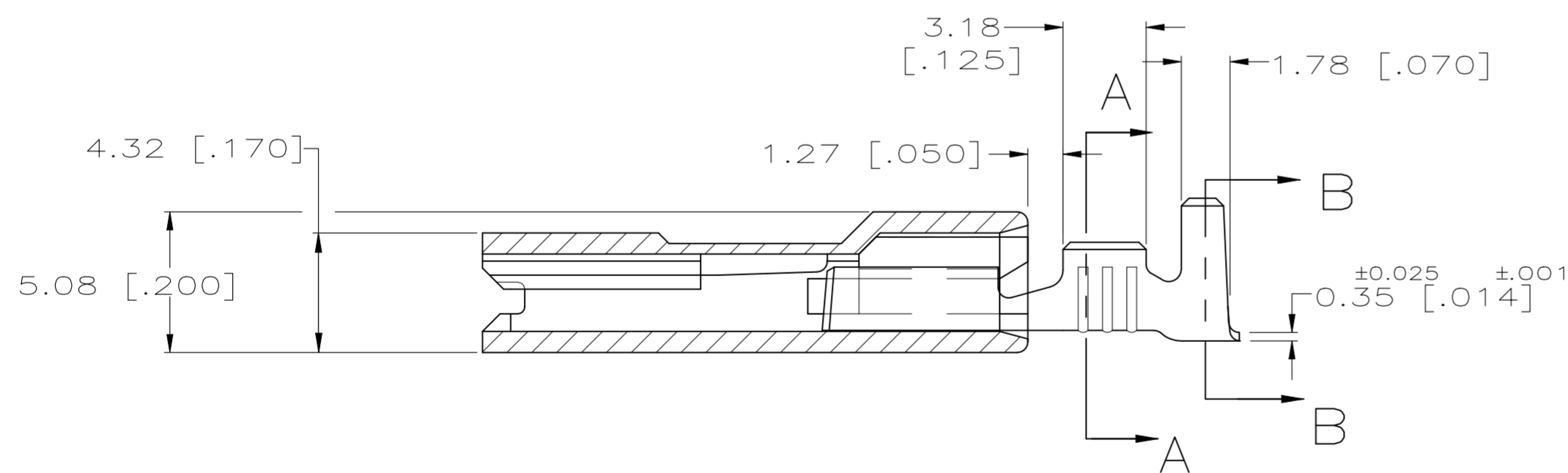
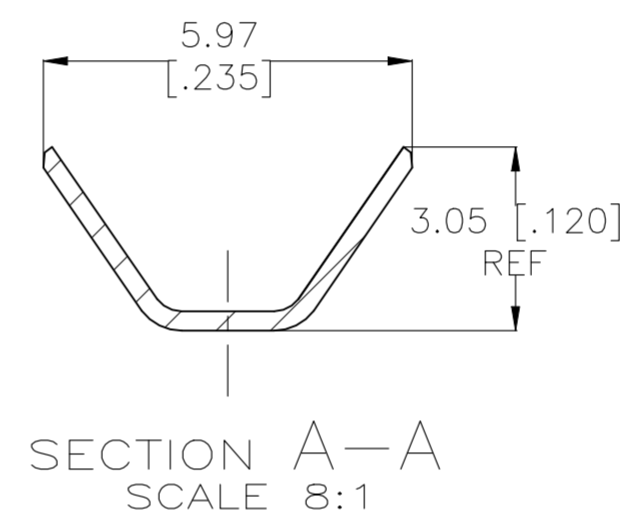


REVISIONS				
P	LTR	DESCRIPTION	DATE	APVD
D1		REVISED PER ECR-22-160893	15DEC2022	DB BW



- 1 WIRE RANGE IS [#18-#16 OR TWO #18'S OR TWO #20'S] AWG.
- 2 INSULATION RANGE IS 2.67-5.33 DIA OR TWO AT 2.67 DIA MAX, [.105-.210 OR TWO AT .105 DIA MAX].
- 3 TIN PLATE PER MIL-T-10727.
- 4 GLOW WIRE APPROVED; CONTACT TE ENGINEERING FOR SPECIFICATION (ALL WALL THICKNESSES ARE BETWEEN 0.4-3.0 [.015-.118])
- 5 PRELIMINARY - NOT FOR PRODUCTION



3 TIN PLATE	2	1	0.508 [.020]	521995-2 4
TERMINAL FINISH	INSULATION RANGE	WIRE SIZE	MATING TAB THK ±0.025 [±.001]	521995-1 5
THIS DRAWING IS A CONTROLLED DOCUMENT.			DWN RAGHAVENDRA 31JAN07	
DIMENSIONS: mm [INCHES]			CHK G.D.PORTA 31JAN07	
TOLERANCES UNLESS OTHERWISE SPECIFIED:			APVD G.D.PORTA 31JAN07	
0 PLC ± -			NAME	
1 PLC ± -			TE Connectivity	
2 PLC ± -			ASSEMBLY, RECEPTACLE, ULTRA-POD, 4.8 [.187] SERIES	
3 PLC ± 0.25 [.010]			PRODUCT SPEC 108-1285	
4 PLC ± -			APPLICATION SPEC 114-2124	
ANGLES ± -			SIZE A2 CAGE CODE 00779 DRAWING NO C=521995 RESTRICTED TO -	
MATERIAL TERMINAL - BRASS HOUSING - V2 NYLON		FINISH TERMINAL - SEE TABLE HOUSING - NATURAL(WHITE)	WEIGHT 0.000000	SCALE 5:1 SHEET 1 OF 1 REV D1
CUSTOMER DRAWING				