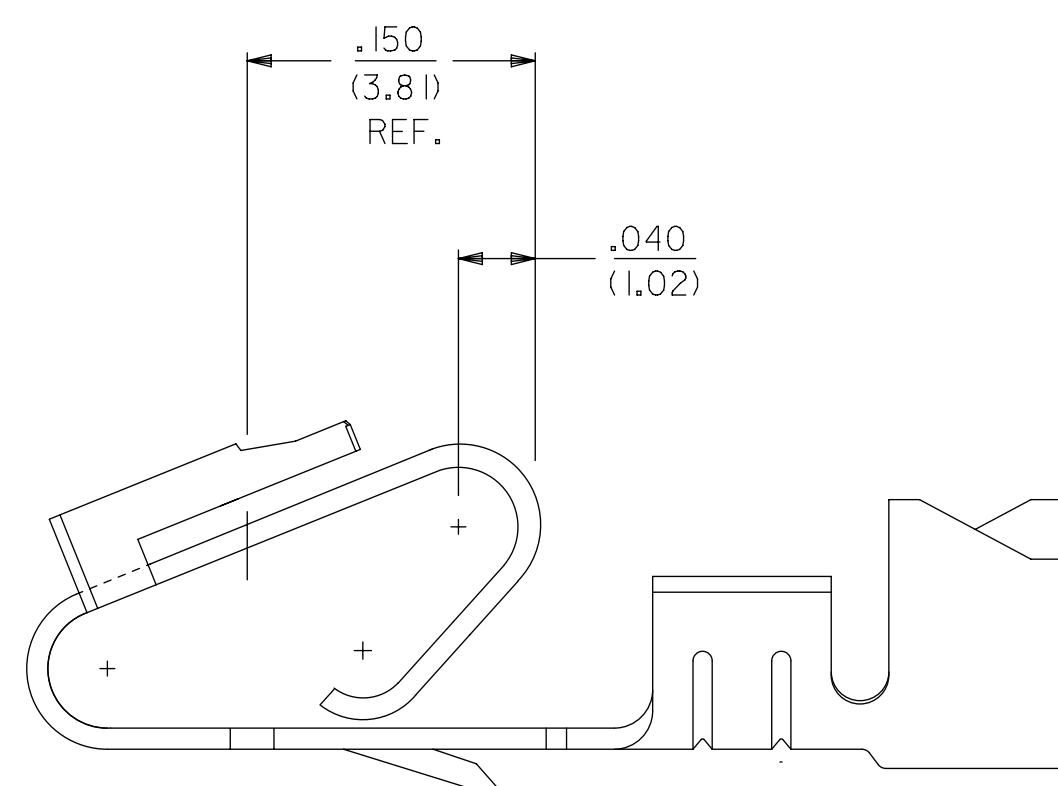
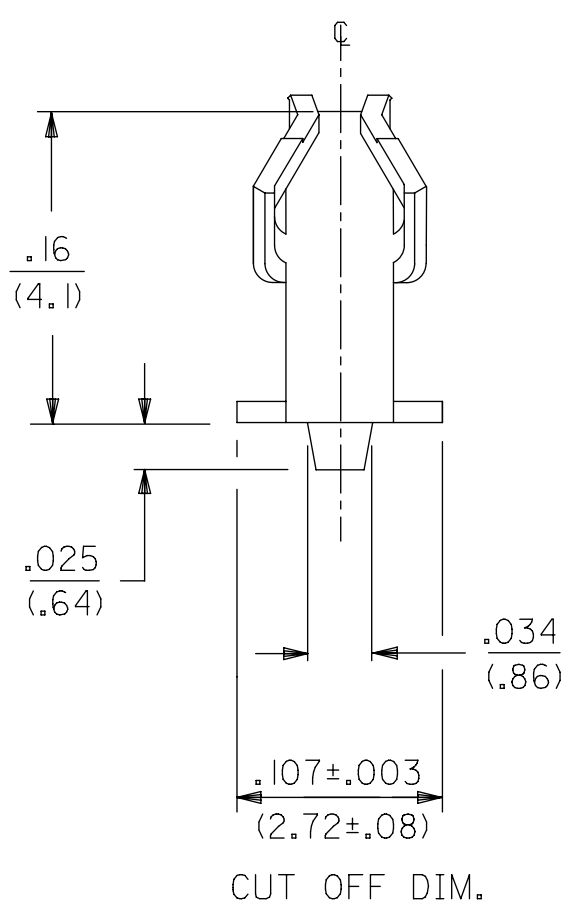


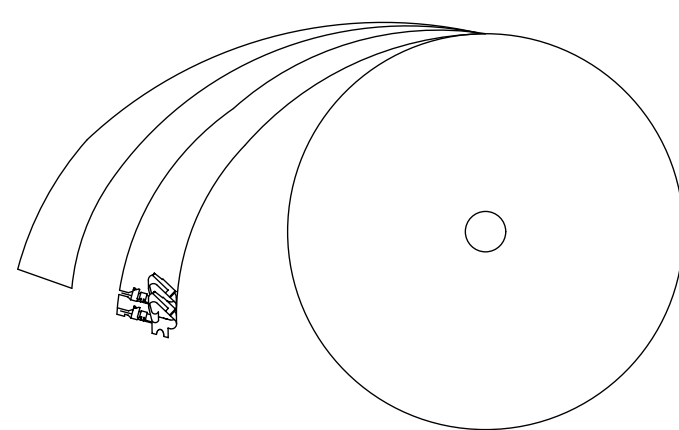
ALTERNATE GEOMETRY  
SEE NOTE 10



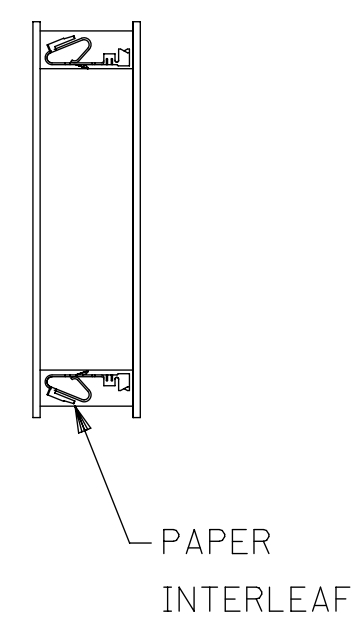
SELECTIVE PLATING  
LOCATION



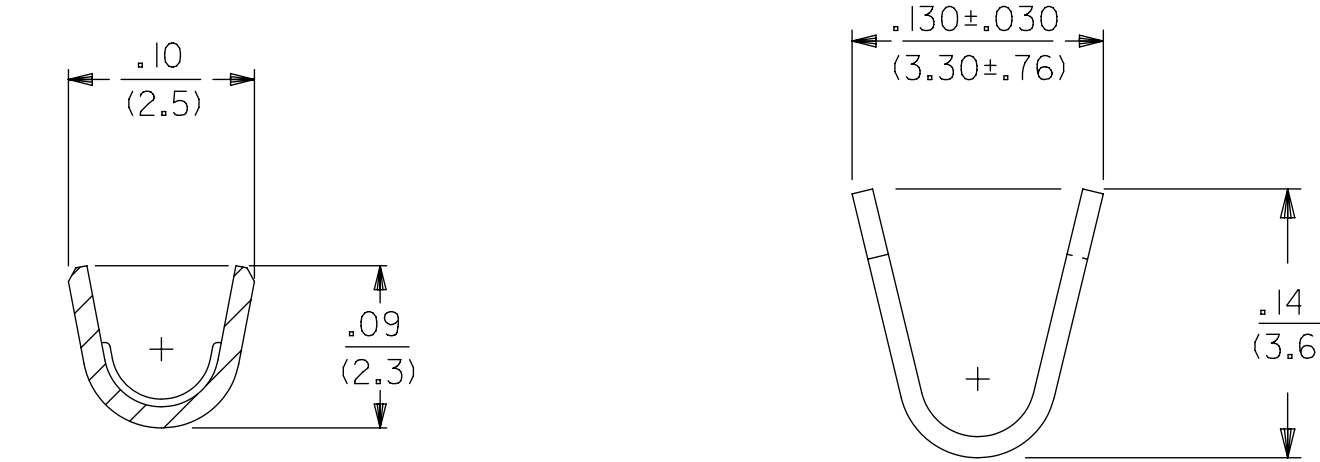
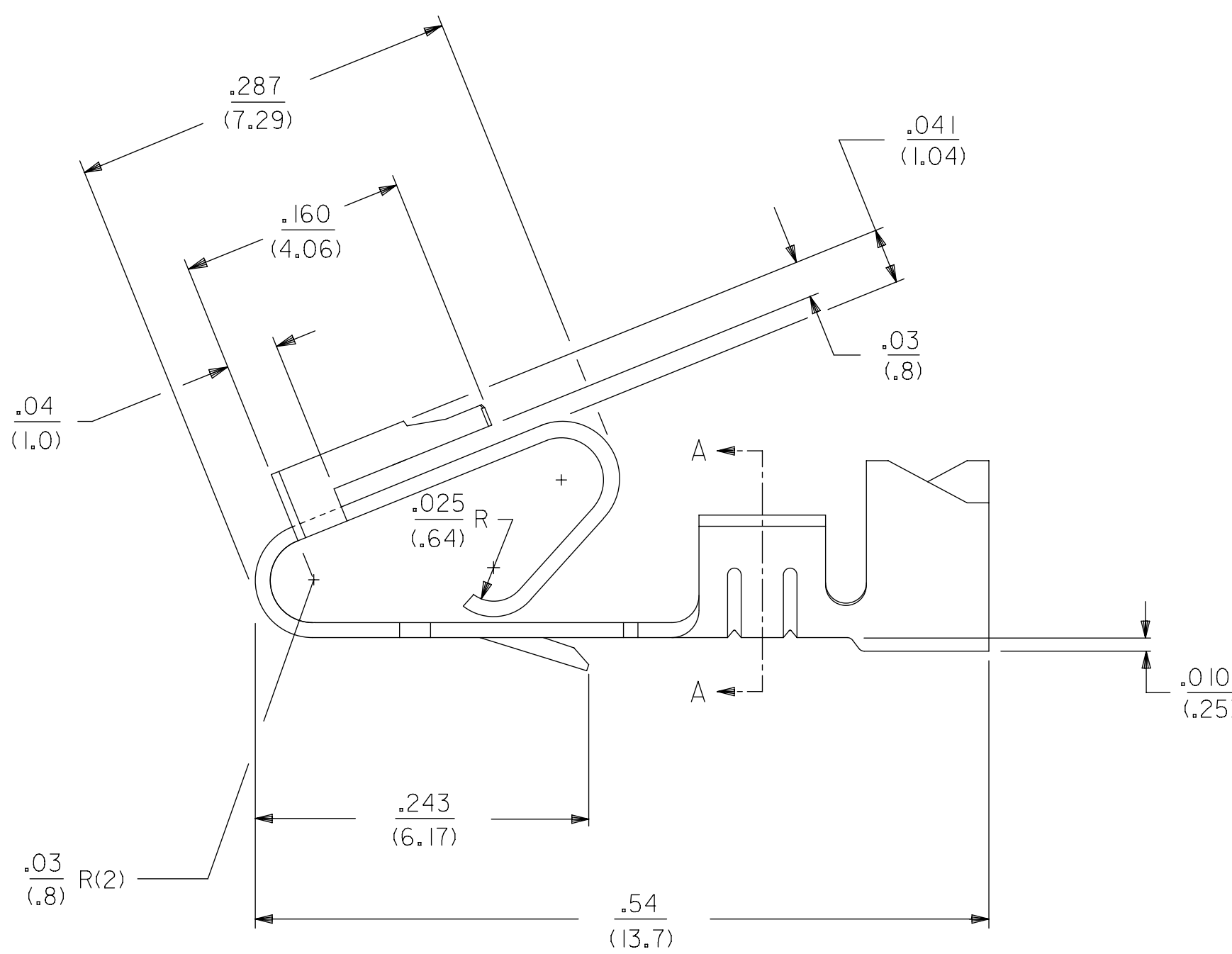
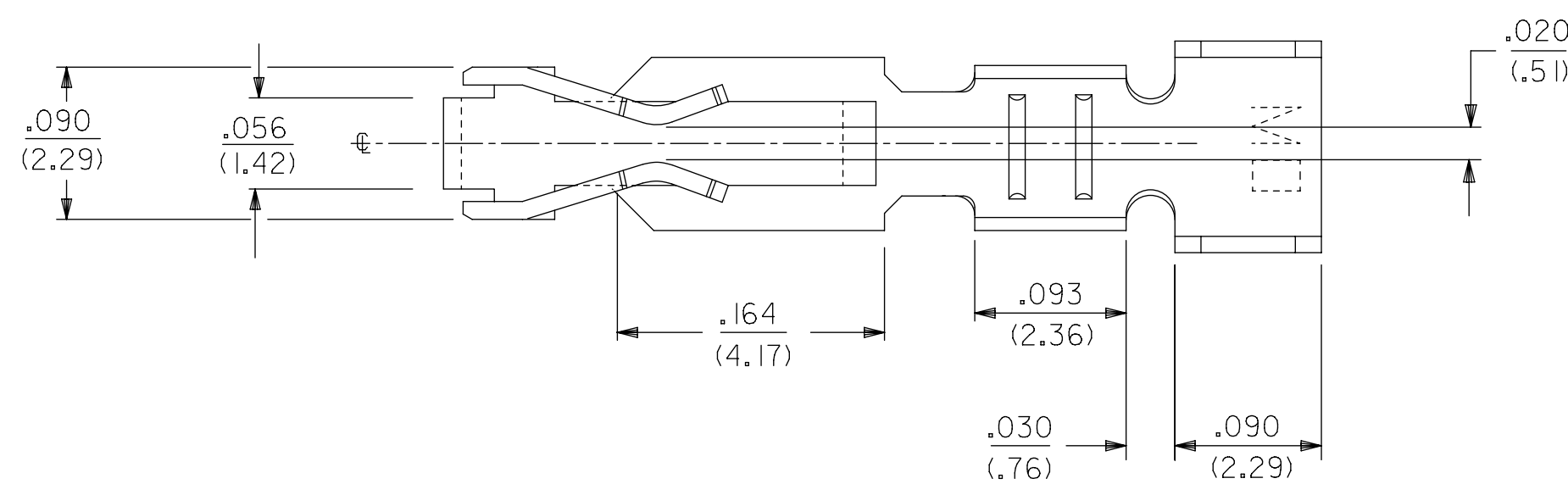
WINDING DETAIL "A"



WINDING DETAIL "B"



PAPER  
INTERLEAF



SECTION A-A

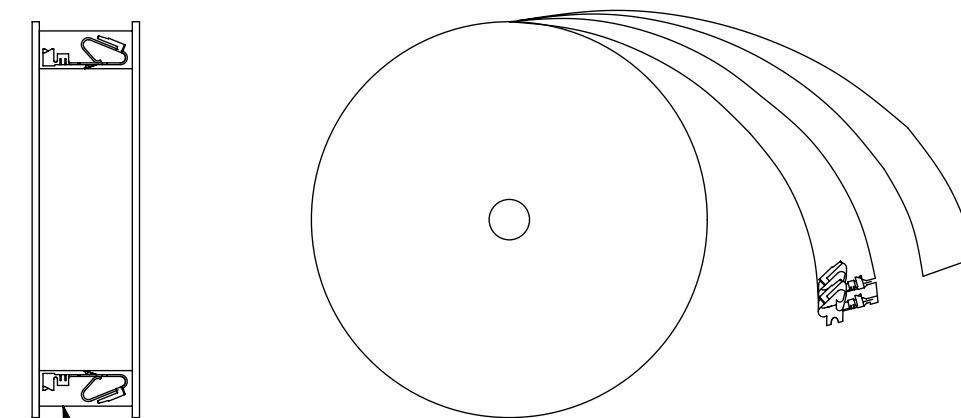
LEGEND: 6838-\*(\*)\*\*

MATERIAL:  
(.27)/.0106 THK  
BLANK=BRASS  
A=PHOS BRONZE

WINDING  
A= PER DETAIL A  
BLANK= PER DETAIL B  
FORM  
BLANK= CHAIN  
L= LOOSE

PLATING  
SEE NOTE 2

- NOTES:  
1. MATERIAL: SEE LEGEND  
2. FINISH:  
909 - OVERALL HOT TIN DIP: .000100/(0.00254) MIN.  
154 - OVERALL TIN: .000100/(0.00254) MIN. OVER  
.000050/(0.00127) MIN. NICKEL.  
555 - SELECT HARD GOLD: .000015/(0.00038) MIN.  
OVERALL NICKEL: .000030/(0.00076) MIN.  
558 - SELECT HARD GOLD: .000030/(0.00076) MIN.  
OVERALL NICKEL: .000050/(0.00127) MIN.  
OVERALL HARD GOLD FLASH: .000002/(0.00005) MIN.  
561 - SELECT HARD GOLD: .000030/(0.00076) MIN.  
OVERALL NICKEL: .000050/(0.00127) MIN.  
3. PRODUCT SPECIFICATION: PS-40-02  
4. PACKAGING SPECIFICATION: CHAIN FORM: SEE PK-2759-002  
LOOSE FORM: SEE PK-2759-001  
5. TERMINAL FOR USE IN HOUSING SERIES 6442 AND 41695.  
6. SEE 7258 SERIES FOR THIS PART WITH CRIMP FOR 22-26 AWG. WIRE.  
7. CRIMP FOR 18 TO 20 GA. WIRE WITH MAX. INSULATION DIA. OF .100/(2.79),  
STRIP LENGTH OF .125/.100 / (3.18/2.54)  
8. DIMENSIONS GIVEN ACROSS CENTERLINES ARE SYMMETRICAL ABOUT  
THOSE CENTERLINES WITHIN HALF THE TOTAL TOLERANCE.  
9. THIS PART CONFORMS TO CLASS B REQUIREMENTS OF COSMETIC SPECIFICATION PS-45499-002.  
10. ALTERNATE GEOMETRY PRESENT ON SOME PART NUMBERS. SEE SHEET 2.  
11. TEXT ON PART IS FOR REFERENCE ONLY. TEXT AND TEXT LOCATION MAY VARY  
DEPENDING ON PART NUMBER AND/OR TOOL.



PAPER  
INTERLEAF

SYMBOLS										THIS DRAWING CONTAINS INFORMATION THAT IS PROPRIETARY TO MOLEX ELECTRONIC TECHNOLOGIES, LLC AND SHOULD NOT BE USED WITHOUT WRITTEN PERMISSION																			
DIMENSION UNITS					SCALE					CURRENT REV DESC: NOTE 4 UPDATED																			
IN/MM					1:1																								
GENERAL TOLERANCES (UNLESS SPECIFIED)																													
4 PLACES ±					±					EC NO: 605479																			
3 PLACES ±					± 0.01					DRWN: SS06 2018/09/17																			
2 PLACES ±					± 0.25 ± 0.015					CHK'D: ISHWARG 2018/10/05																			
1 PLACE ±					± 0.36 ±					APPR: ISHWARG 2018/10/05																			
0 PLACES ±					±					INITIAL REVISION:																			
ANGULAR TOL ± 0.5°										DRWN: GUZIK 1989/11/15																			
DRAFT WHERE APPLICABLE MUST REMAIN WITHIN DIMENSIONS					THIRD ANGLE PROJECTION					APPR: LENZ 1989/11/15																			
					D-DRAWING					SERIES					MATERIAL NUMBER					CUSTOMER					SHEET NUMBER				
					D-SIZE					6838					SEE CHART					GENERAL MARKET					1 OF 2				

**molex**

TRIFURCON TERMINAL  
CRIMP TYPE, .156 CENTERS 18 TO 20 AWG WIRE

PRODUCT CUSTOMER DRAWING

DOCUMENT NUMBER: SD-6838  
DOC TYPE: PSD  
DOC PART: 001  
REVISION: AT

6838-(\*)\*\*

PART NO.	ENG. NO.	
08-50-0187	6838-(P909)	SEE NOTE 1
08-50-0189	6838-(P909)L	SEE NOTE 1
08-50-0275	6838-(P909)-A	

6838-A(\*)\*\*

PART NO.	ENG. NO.	
08-58-0187	6838-A(P558)	
08-58-0189	6838-A(P558)L	
08-52-0112	6838-A(P909)	SEE NOTE 1
08-52-0113	6838-A(P909)L	SEE NOTE 1
08-50-0024	<b>6838-A(154)</b>	
08-50-0251	<b>6838-A(154)L</b>	
08-58-0105	6838-A(P555)	
08-58-0106	6838-A(P555)L	
08-58-0110	6838-A(P56 I)	SEE NOTE 1
08-58-0111	6838-A(P56 I)L	SEE NOTE 1
08-58-0118	6838-A(56 I)	
08-58-0119	6838-A(56 I)L	

## NOTES:

1. PART MANUFACTURED WITH ALTERNATE GEOMETRY. SEE SHEET 1.

SYMBOLS										THIS DRAWING CONTAINS INFORMATION THAT IS PROPRIETARY TO MOLEX ELECTRONIC TECHNOLOGIES, LLC AND SHOULD NOT BE USED WITHOUT WRITTEN PERMISSION									
DIMENSION UNITS		SCALE		CURRENT REV DESC: NOTE 4 UPDATED															
▽ = 0	INCH	1:1																	
GENERAL TOLERANCES (UNLESS SPECIFIED)										EC NO: 605479									
		MM		INCH		DRWN: SS06 2018/09/17													
▽ = 0	4 PLACES	±	±	DRWN: ISHWARG 2018/10/05															
▽ = 0	3 PLACES	±	± 0.01	APPR: ISHWARG 2018/10/05															
▽ = 0	2 PLACES	±	0.25 ± 0.015	INITIAL REVISION:															
▽ = 0	1 PLACE	±	0.36 ±	DRWN: DRWN BY 1989/11/15															
▣ = 0	0 PLACES	±	±	APPR: APPR BY 1989/11/15															
▣ = 0	ANGULAR TOL ± 0.5 °			THIRD ANGLE PROJECTION		DRAWING		SERIES		MATERIAL NUMBER		CUSTOMER		SHEET NUMBER					
▽ = 0	DRAFT WHERE APPLICABLE MUST REMAIN WITHIN DIMENSIONS					D-SIZE		6838		SEE CHART		GENERAL MARKET		2 OF 2					

**molex**TRIFURCON TERMINAL  
CRIMP TYPE, .156 CENTERS 18 TO 20 AWG WIRE

PRODUCT CUSTOMER DRAWING

DOCUMENT NUMBER: SD-6838  
DOC TYPE: PSD  
DOC PART: 001  
REVISION: ATDOCUMENT STATUS: P1  
RELEASE DATE: 2018/10/05 09:56:24