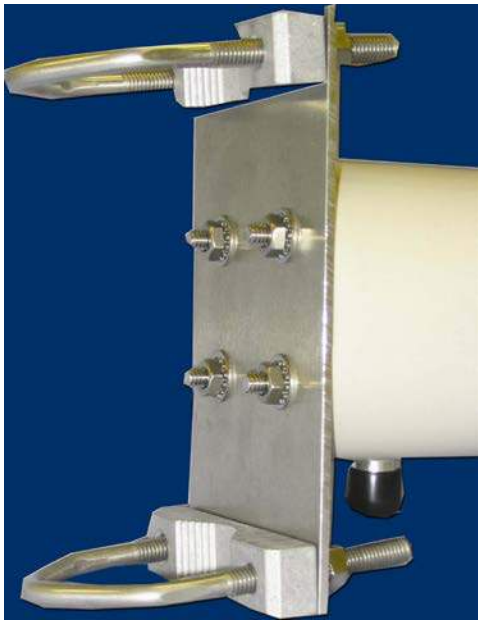


ANTENNA TECHNOLOGIES LIMITED COMPANY

# Model P2406 Directional Antenna

## Key Features

- 2375-2500 MHz
- UV stable radome with high to front back ratios
- Wideband design to provide full coverage without field tuning
- Tubular radome reduces wind loads and increases strength in harsh environments



**V-BOLTS AND V-BLOCKS  
for  
MAST MOUNTING**

Electrical Specifications	P2406
Frequency Range, MHz	2375-2500 MHz
Front to Back Ratio	18dB (min) 20 dB typical
Polarization	Vertical
Gain, dBi, min	6
VSWR	1.5:1
Power	200 W

Mechanical Specifications	P2406
E-Plane	60°
H-Plane	90°
Length	4"
Weight	1.5 lbs
Connector	N Female, Bulkhead
Mounting Hardware	Heavy duty mast mounting kit included for up to a 2.0" diameter mast.
Radome	White
Wind Survival/mph	175