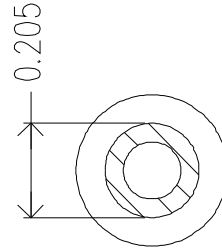
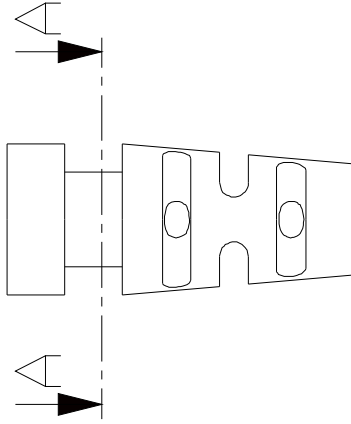
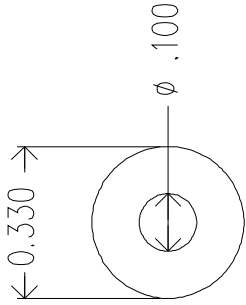
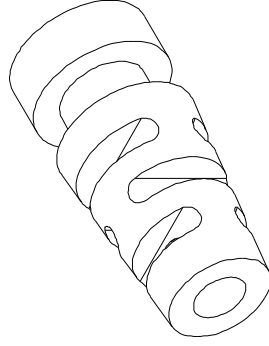
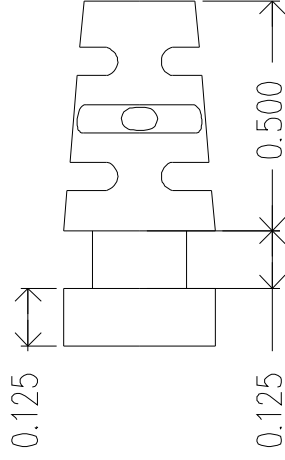


REVISIONS		DATE	APPROVED
ZONE	REV.		



A-A (2.5 : 1)



MOLD MATERIAL: ISC P/N: 5000214, PVC, M1472, Black, RoHS

Dimensions are subject to change.  
 PROPRIETARY AND CONFIDENTIAL  
 THE INFORMATION CONTAINED IN THIS DRAWING IS THE SOLE PROPERTY OF ISC ENGINEERING. ANY REPRODUCTION IN PART OR AS A WHOLE WITHOUT THE WRITTEN PERMISSION OF ISC ENGINEERING IS PROHIBITED.

DIMENSIONS ARE IN INCHES		NAME	DATE	ISC Engineering
TOLERANCES:		R FIERRO	01/14/04	4351 Schaefer Ave, Chino, CA 91710
FRACTIONAL ±				Ph: 909-596-3315 Fax: 909-596-3335
ANGULAR: MACH ±	BEND ±			www.iscengineering.com
TWO PLACE DECIMAL ±	THREE PLACE DECIMAL ±			www.overmoldtooling.com
MATERIAL	FINISH			
DO NOT SCALE	DRAWING			
APPLICATION	USED ON			
	NEXT ASSY			
	COMMENTS:			
	Q.A.			
	ENG APPR.			
	CHECKED			
	DRAWN			
ROUND, MULTIFLEX SR				
1461080-100-E-205-330-0				
SCALE: 2:1	WEIGHT:			
SIZE DWG. NO. A	REV. 1467089			
SHEET 1 OF 1				

