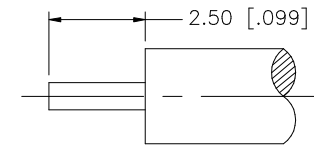
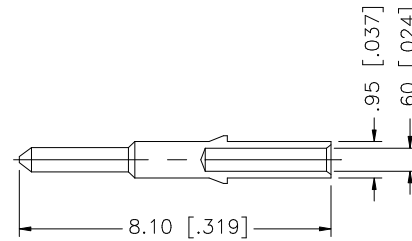
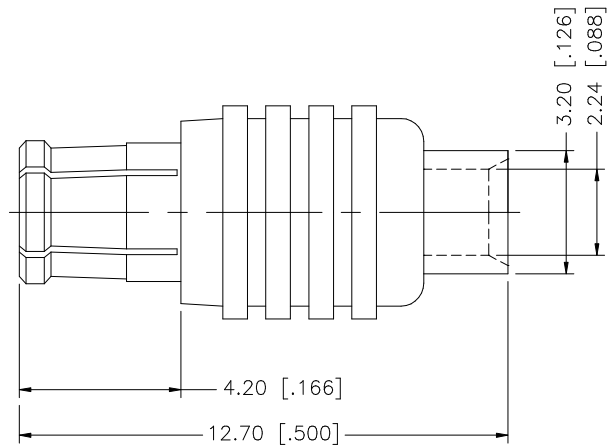


REV.	DATE	DESCRIPTION
A	04/31/03	UPDATE DRAWING FORMAT



RECOMMENDED CABLE STRIPPING DIMENSIONS

8				<small>UNLESS OTHERWISE SPECIFIED DIMENSIONS ARE IN MILLIMETERS. DIMENSIONS IN [] ARE IN INCHES AND FOR CUSTOMER REFERENCE ONLY.</small> <small>UNLESS OTHERWISE SPECIFIED TOLERANCES FOR MILLIMETERS ARE:</small> 0.5 - 8mm ± 0.20mm 8 - 30mm ± 0.40mm 30 - 120mm ± 0.50mm <small>UNLESS OTHERWISE SPECIFIED TOLERANCES FOR INCHES ARE:</small> .020 - .315 = ± 0.007" .315 - 1.180 = ± 0.015" 1.180 - 4.724 = ± 0.020"	APPROVALS	DATE	<h1 style="color: blue;">Amphenol Connex</h1>	
7			DRAWN		G.R.S.	04/31/03		PART DESCRIPTION MCX DIRECT SOLDER PLUG (FOR .085", .086")
6			CHECKED					
5			ISSUED					
4				SHEET	1 OF 1	PART NO. 252107		
3	CONTACT PIN	BRASS	GOLD	1			DWG. NO. 252107.DWG	
2	INSULATOR	TEFLON	NATURAL	1		REV. A		
1	BODY	BER. COPPER	GOLD	1			SIZE A	
	DESCRIPTION	MATERIAL	FINISH	QTY	DO NOT SCALE DRAWING	SCALE NA		
					CAD FILE C:/252/252107.DWG			