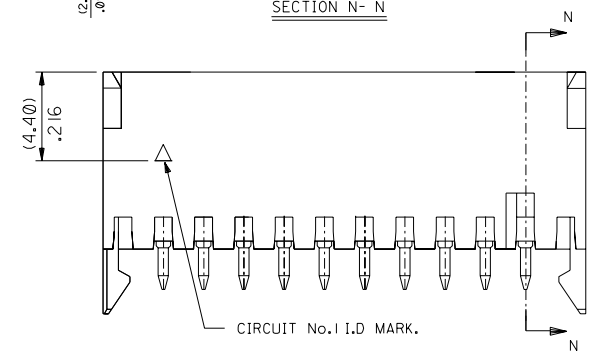
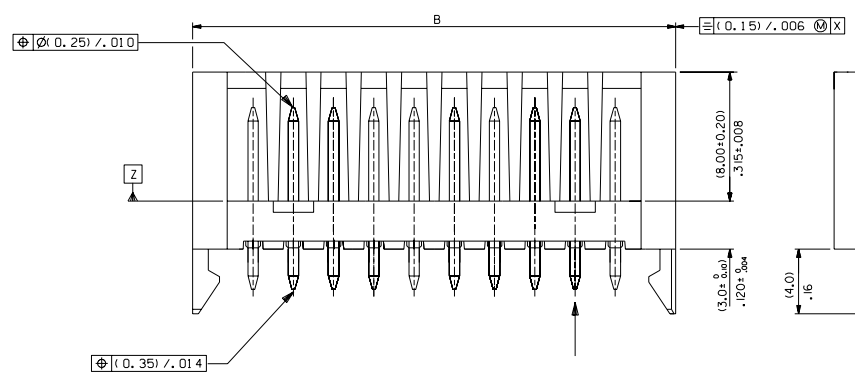
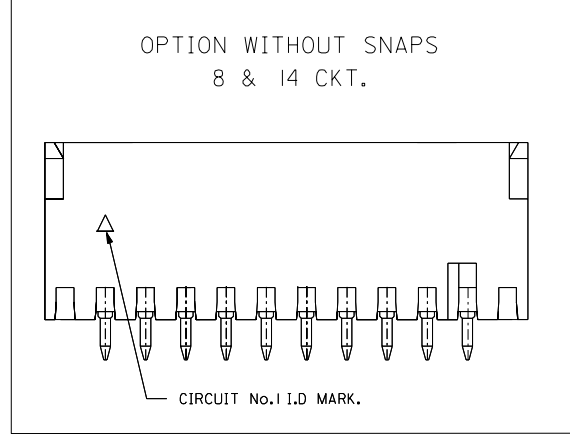
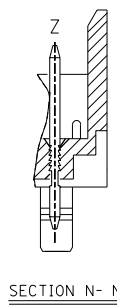
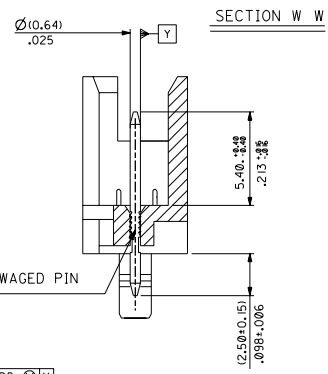
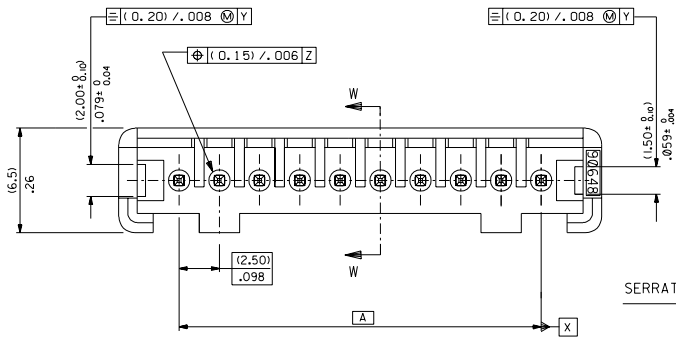
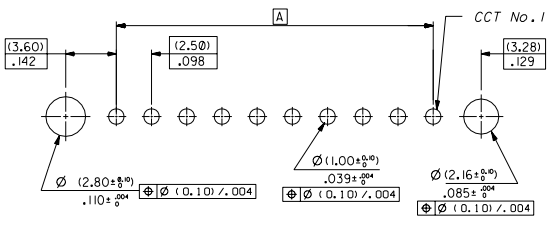


PART NO. SEE CHART
 DWG. NO. SDA-90648



RECOMMENDED P.C.B. HOLE LAYOUT

PCB LAYOUT : COMPONENT SIDE
 PCB THICKNESS 1.50 TO 1.60.



NOTES :

- MATERIAL
 HEADER (2-6 CIRCUIT) : POLYESTER, UL 94V-0, G.E VALOX 310-SE0.
 HEADER (7-20 CIRCUIT) : 15% GF NATURAL (WHITE) POLYESTER, RATED UL 94V-0
 PINS: BRASS, PLATING: (3um)/.118uin MIN. TIN
 TO 95/5 OVER (2um)/.078uin MIN. COPPER OR NICKEL.
- FOR ALL UNSTATED DIMENSIONS SEE SHEET 2.
- PIN PUSH OUT FORCE 35N MIN. IN DIRECTION OF ARROW Z.
- OPTIONS ADDED: 8 & 14ckt. WITHOUT SNAPS.

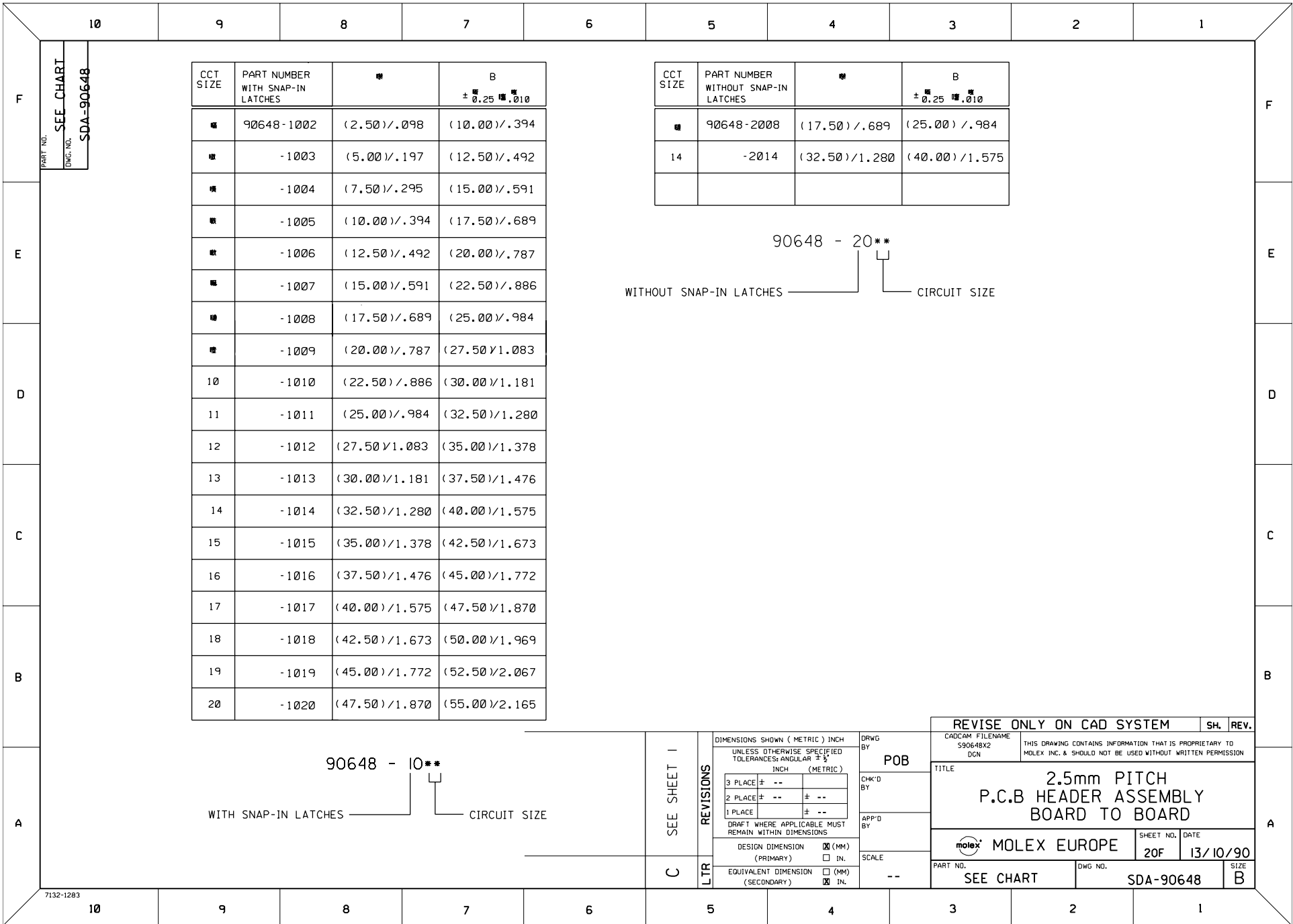
| | |
|---|---|
| 2 | C |
| 1 | E |

| REV | DESCRIPTION |
|-----|-------------|
| | |

| | |
|--|-------|
| GENERAL TOLERANCES: (UNLESS SPECIFIED) | |
| mm | INCH |
| 4 PLACES ±0. | ±. |
| 3 PLACES ±0. | ±.006 |
| 2 PLACES ±0.015 | ±.008 |
| 1 PLACE ±0.025 | ±. |
| ANGULAR: ± 2° | |
| DRAFT WHERE APPLICABLE MUST REMAIN WITHIN DIMENSIONS | |

| | |
|---|---|
| SCALE 5:1 | DESIGN UNITS <input type="checkbox"/> mm <input type="checkbox"/> INCH |
| DRAWN BY & DATE POB 13/10/90 | |
| CHECKED BY & DATE BMAGUIRE 13/10/90 | |
| APPROVED BY & DATE BMAGUIRE 13/10/90 | |
| CAD FILENAME S90648X1.DGN | |

| | | | |
|--|--------------------------|---------------------|-----------|
| DIMENSIONS: <input checked="" type="checkbox"/> mm <input type="checkbox"/> INCH | | SHT | REV |
| THIRD ANGLE PROJECTION | | 2 | C |
| TITLE: 2.5mm PITCH P.C.B. HEADER ASSEMBLY BOARD TO BOARD | | 1 | E |
| MOLEX INCORPORATED | | | |
| MATERIAL NO. SEE CHART | DRAWING NO. SDA-90648 | SHEET NO. 1 OF 2 | |
| THIS DRAWING CONTAINS INFORMATION THAT IS PROPRIETARY TO MOLEX INCORPORATED AND SHOULD NOT BE USED WITHOUT WRITTEN PERMISSION. | | | SIZE B |



PART NO. SDA-90648
DWG. NO.

| CCT SIZE | PART NUMBER WITH SNAP-IN LATCHES | A | B |
|----------|----------------------------------|---------------|---------------|
| | | | ± 0.25 0.010 |
| ■ | 90648-1002 | (2.50)/.098 | (10.00)/.394 |
| ■ | -1003 | (5.00)/.197 | (12.50)/.492 |
| ■ | -1004 | (7.50)/.295 | (15.00)/.591 |
| ■ | -1005 | (10.00)/.394 | (17.50)/.689 |
| ■ | -1006 | (12.50)/.492 | (20.00)/.787 |
| ■ | -1007 | (15.00)/.591 | (22.50)/.886 |
| ■ | -1008 | (17.50)/.689 | (25.00)/.984 |
| ■ | -1009 | (20.00)/.787 | (27.50)/1.083 |
| 10 | -1010 | (22.50)/.886 | (30.00)/1.181 |
| 11 | -1011 | (25.00)/.984 | (32.50)/1.280 |
| 12 | -1012 | (27.50)/1.083 | (35.00)/1.378 |
| 13 | -1013 | (30.00)/1.181 | (37.50)/1.476 |
| 14 | -1014 | (32.50)/1.280 | (40.00)/1.575 |
| 15 | -1015 | (35.00)/1.378 | (42.50)/1.673 |
| 16 | -1016 | (37.50)/1.476 | (45.00)/1.772 |
| 17 | -1017 | (40.00)/1.575 | (47.50)/1.870 |
| 18 | -1018 | (42.50)/1.673 | (50.00)/1.969 |
| 19 | -1019 | (45.00)/1.772 | (52.50)/2.067 |
| 20 | -1020 | (47.50)/1.870 | (55.00)/2.165 |

| CCT SIZE | PART NUMBER WITHOUT SNAP-IN LATCHES | A | B |
|----------|-------------------------------------|---------------|---------------|
| | | | ± 0.25 0.010 |
| ■ | 90648-2008 | (17.50)/.689 | (25.00)/.984 |
| 14 | -2014 | (32.50)/1.280 | (40.00)/1.575 |
| | | | |

90648 - 20**

WITHOUT SNAP-IN LATCHES CIRCUIT SIZE

90648 - 10**

WITH SNAP-IN LATCHES CIRCUIT SIZE

| | | | | | | | | | | |
|--|-----------|--|------|----------|--------------|---|--------------------|--|------|--|
| SEE SHEET 1 | REVISIONS | DIMENSIONS SHOWN (METRIC) INCH | | DRWG BY | POB | REVISE ONLY ON CAD SYSTEM | | SH. | REV. | |
| | | UNLESS OTHERWISE SPECIFIED TOLERANCES: ANGULAR ± 1/2 | | CHK'D BY | | THIS DRAWING CONTAINS INFORMATION THAT IS PROPRIETARY TO MOLEX INC. & SHOULD NOT BE USED WITHOUT WRITTEN PERMISSION | | | | |
| | | INCH (METRIC) | | APP'D BY | | TITLE | | 2.5mm PITCH P.C.B HEADER ASSEMBLY BOARD TO BOARD | | |
| | | 3 PLACE ± -- | ± -- | | | SHEET NO. DATE | | 20F 13/10/90 | | |
| DRAFT WHERE APPLICABLE MUST REMAIN WITHIN DIMENSIONS | | DESIGN DIMENSION <input checked="" type="checkbox"/> (MM) (PRIMARY) <input type="checkbox"/> IN. | | SCALE | MOLEX EUROPE | | PART NO. SDA-90648 | | | |
| | | EQUIVALENT DIMENSION <input type="checkbox"/> (MM) (SECONDARY) <input checked="" type="checkbox"/> IN. | | SCALE | SEE CHART | | SIZE B | | | |