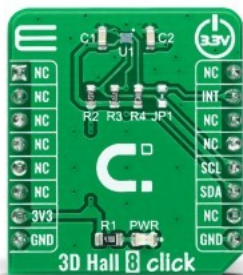


## 3D Hall 8 Click



PID: MIKROE-4498

**3D Hall 8 Click** is a compact add-on board containing an ultra-small 3D-magnetic sensor for industrial and consumer applications. This board features the TLI493D-W2BW, a low-power 3D Hall sensor from Infineon. This magnetic sensor combines high-accuracy magnetic field measurements with exceptionally low power consumption (minimum 7nA). It features an I2C interface, enabling it to be easily configured by MCU while the measurement data provided in digital format. It also provides the functionality to Wake-Up a sleeping system. This Click board™ is suitable for a wide range of magnetic sensing, including robotics position sensing, angle measurement at the end of the shaft and out of shaft configurations, and many more.

3D Hall 8 Click is supported by a [mikroSDK](#) compliant library, which includes functions that simplify software development. This [Click board™](#) comes as a fully tested product, ready to be used on a system equipped with the [mikroBUS™](#) socket.

Mikroe produces entire development toolchains for all major microcontroller architectures.

Committed to excellency, we are dedicated to helping engineers bring the project development up to speed and achieve outstanding results.



ISO 27001: 2013 certification of informational security management system.  
 ISO 14001: 2015 certification of environmental management system.  
 OHSAS 18001: 2008 certification of occupational health and safety management system.



ISO 9001: 2015 certification of quality management system (QMS).

## Specifications

Type	Magnetic
Applications	Can be used for a wide range of magnetic sensing, including robotics position sensing, angle measurement at the end of the shaft and out of shaft configurations, and many more.
On-board modules	TLI493D-W2BW - low-power 3D Hall sensor with an I2C interface and Wake-Up feature from Infineon
Key Features	Low power 3D Hall sensor, Wake-Up function, power down mode with 7nA (typ.) power consumption, 12-bit resolution for each measurement direction plus 10-bit temperature sensor, and more.
Interface	I2C
ClickID	No
Compatibility	mikroBUS
Click board size	S (28.6 x 25.4 mm)
Input Voltage	3.3V

## Resources

[mikroBUS™](#)

[mikroSDK](#)

[Click board™ Catalog](#)

[Click boards™](#)

## Downloads

[TLI493D-W2BW datasheet](#)

[3D Hall 8 click 2D and 3D files](#)

[3D Hall 8 click schematic](#)

[3D Hall 8 click example on Libstock](#)

Mikroe produces entire development toolchains for all major microcontroller architectures.

Committed to excellency, we are dedicated to helping engineers bring the project development up to speed and achieve outstanding results.



ISO 27001: 2013 certification of informational security management system.  
 ISO 14001: 2015 certification of environmental management system.  
 OHSAS 18001: 2008 certification of occupational health and safety management system.



ISO 9001: 2015 certification of quality management system (QMS).