



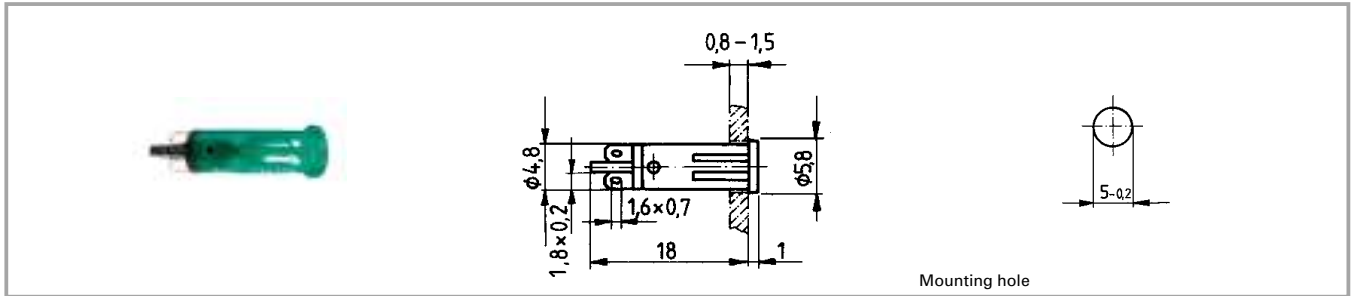
General data

Signal lamps with integral filament lamp, neon lamp or neon glow lamp.
For mounting hole diameters from 5 to 14 mm. The mm specification in the product name indicates the appropriate mounting hole diameter of the signal lamps.

Content

Signal lamps with integrated filament lamp, 5 mm	3 - 22
Signal lamps with integrated filament lamp, 5 mm, round lens	3 - 22
Signal lamps with integrated filament lamp, 5 mm, square lens	3 - 23
Signal lamps with integrated filament lamp, 5 mm, triangular lens	3 - 23
Signal lamps with integrated filament/neon lamp, 7 mm	3 - 24
Signal lamps with integrated filament/neon lamp, 7 mm, solder terminals	3 - 25
Signal lamps with integrated filament/neon lamp, 10 mm	3 - 26
Signal lamps with integrated filament/neon lamp, 10 mm, round lens	3 - 27
Signal lamps with integrated filament/neon lamp, 10 mm	3 - 28
Signal lamps with integrated filament/neon lamp, 10 mm, round lens	3 - 29
Signal lamps with integrated filament/neon lamp, 10 mm, square lens	3 - 30
Signal lamps with integrated filament/neon lamp, 10 mm, lens in arrow shape	3 - 31
Signal lamps with integrated filament/neon lamp, 14 mm	3 - 32
Signal lamps with integrated filament lamp, 14 mm, round lens, 28 V	3 - 32
Signal lamps with integrated neon lamp, 14 mm, round lens, 230 V	3 - 33

Signal lamps with integrated filament lamp, 5 mm



Mounting hole

Technical data

General information

Form of lens see order block
 Colour of lens see order block
 Diameter of collar see order block

Dimensions

Length of collar see order block
 Width of collar see order block
 Overall height 1 mm
 Mounting depth 18 mm
 Mounting hole 5 mm

Mechanical design

Mounting pressing into hole
 Terminals solder terminals
 Lamp socket no
 Lamp filament lamp

Electrical characteristics

Voltage limit max. 24 V
 Power limit max. 0.45 W

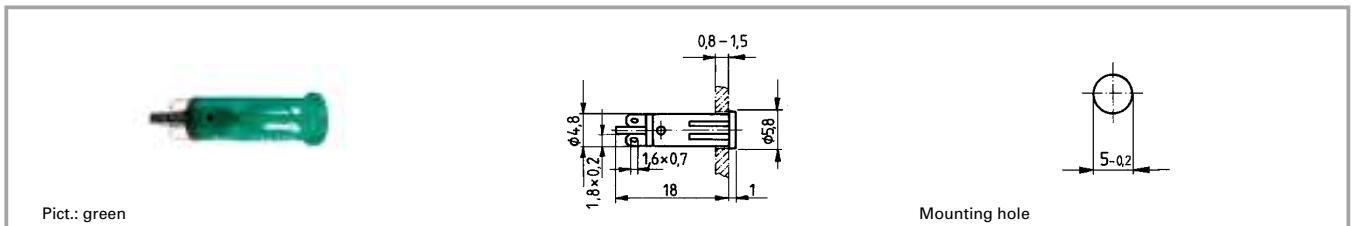
Other specifications

Operating life 10000 h
 Degree of protection from front side IP40
 Weight 0.3 g

3

Integr.
Lamp

Signal lamps with integrated filament lamp, 5 mm, round lens



Pict.: green

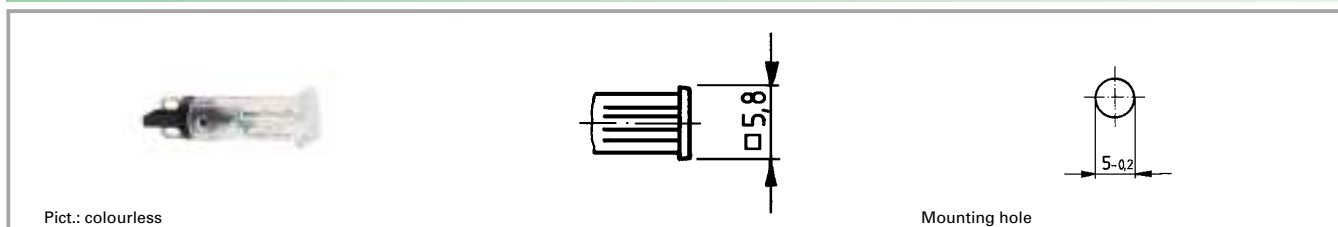
Mounting hole

Voltage limit max.	Power limit max.	Lamp	Operating life	Colour of lens	Order no.
24 V	0.45 W	filament lamp	10000 h	transparent colourless	1.69.508.113/1002
24 V	0.45 W	filament lamp	10000 h	transparent red	1.69.508.113/1301
24 V	0.45 W	filament lamp	10000 h	transparent yellow	1.69.508.113/1402
24 V	0.45 W	filament lamp	10000 h	transparent green	1.69.508.113/1502
24 V	0.45 W	filament lamp	10000 h	transparent blue	1.69.508.113/1601

Technical data see page 3 - 22

Signal lamps with integrated lamp

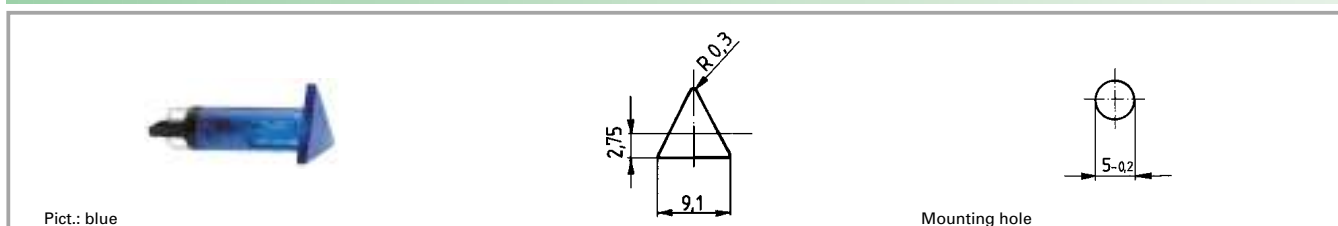
Signal lamps with integrated filament lamp, 5 mm, square lens



Voltage limit max.	Power limit max.	Lamp	Operating life	Colour of lens	Order no.
24 V	0.45 W	filament lamp	10000 h	transparent colourless	1.69.508.103/1002
24 V	0.45 W	filament lamp	10000 h	transparent red	1.69.508.103/1301
24 V	0.45 W	filament lamp	10000 h	transparent yellow	1.69.508.103/1402
24 V	0.45 W	filament lamp	10000 h	transparent green	1.69.508.103/1502
24 V	0.45 W	filament lamp	10000 h	transparent blue	1.69.508.103/1601

Technical data see page 3 - 22

Signal lamps with integrated filament lamp, 5 mm, triangular lens



Voltage limit max.	Power limit max.	Lamp	Operating life	Colour of lens	Order no.
24 V	0.45 W	filament lamp	10000 h	transparent colourless	1.69.508.133/1002
24 V	0.45 W	filament lamp	10000 h	transparent red	1.69.508.133/1301
24 V	0.45 W	filament lamp	10000 h	transparent yellow	1.69.508.133/1402
24 V	0.45 W	filament lamp	10000 h	transparent green	1.69.508.133/1502
24 V	0.45 W	filament lamp	10000 h	transparent blue	1.69.508.133/1601

Technical data see page 3 - 22

3

Integr.
Lamp

Signal lamps with integrated filament/neon lamp, 7 mm



Technical data

General information

Form of lens	round
Colour of lens	see order block
Diameter of collar	8.5 mm

Dimensions

Overall height	5 mm
Mounting depth	see order block
Mounting hole	7 mm

Mechanical design

Mounting	pressing into hole
Terminals	see order block
Lamp socket	no
Lamp	see order block

Electrical characteristics

Voltage limit max.	see order block
Power limit max.	see order block

Other specifications

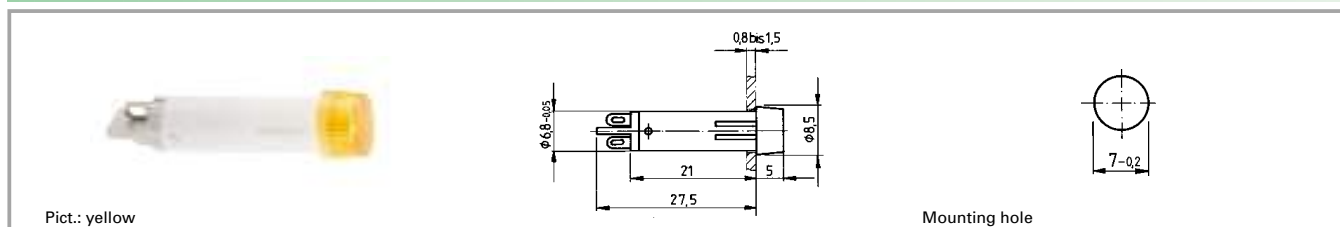
Operating life	25000 h
Degree of protection from front side	IP40
Weight	0.87 g
Approvals neon lamp versions	VDE T85°, SEV T85°, FEMKO T85° b. 0.5 mA

3

Integr.
Lamp

Signal lamps with integrated lamp

Signal lamps with integrated filament/neon lamp, 7 mm, solder terminals



Pict.: yellow

Mounting hole

Voltage limit max.	Power limit max.	Terminals	Lamp	Operating life	Colour of lens	Order no.
24 V	0.84 W	solder terminals	filament lamp	25000 h	transparent colourless	1.69.511.054/1002
24 V	0.84 W	solder terminals	filament lamp	25000 h	transparent red	1.69.511.054/1301
24 V	0.84 W	solder terminals	filament lamp	25000 h	transparent yellow	1.69.511.054/1402
24 V	0.84 W	solder terminals	filament lamp	25000 h	transparent green	1.69.511.054/1502
230 V		solder terminals	neon lamp		transparent colourless	1.69.511.059/1002
230 V		solder terminals	neon lamp		transparent red	1.69.511.059/1301
230 V		solder terminals	neon lamp		transparent yellow	1.69.511.059/1402

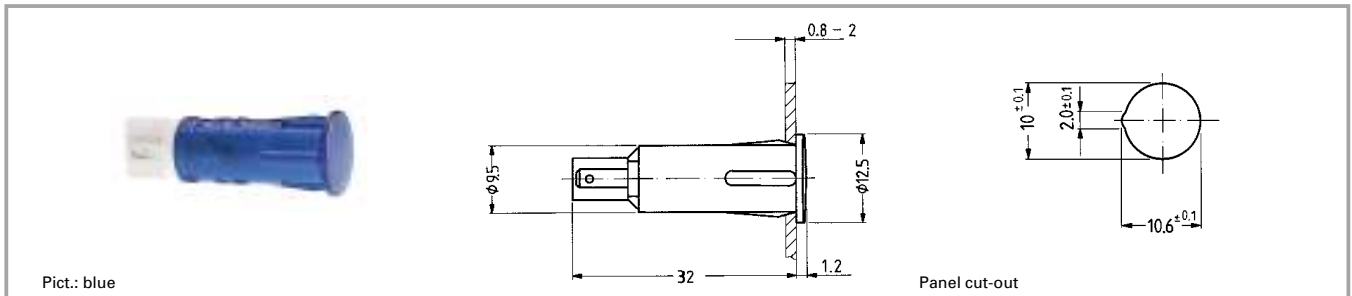
Technical data see page 3 - 24

Other voltages on request.

3

Integr.
Lamp

Signal lamps with integrated filament/neon lamp, 10 mm



Technical data

General information

Form of lens	see order block
Colour of lens	see order block
Diameter of collar	see order block

Dimensions

Length of collar	see order block
Width of collar	see order block
Overall height	1.2 mm
Mounting depth	32 mm
Mounting hole	10 mm

Mechanical design

Mounting	pressing into hole
Terminals	quick connector 2.8 x 0.8 tin-plated
Lamp socket	no
Lamp	see order block

Electrical characteristics

Voltage limit max.	see order block
Power limit max.	see order block

Other specifications

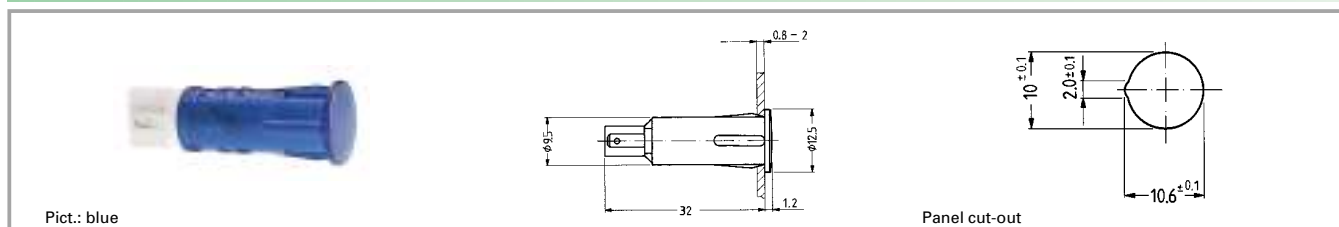
Operating life	10000 h
Degree of protection from front side	IP40
Weight	2.5 g
Approvals neon lamp (T=°C)	VDE (85) at 1.5 W, VDE (120) at 1.6 mA

3

Integr.
Lamp

Signal lamps with integrated lamp

Signal lamps with integrated filament/neon lamp, 10 mm, round lens



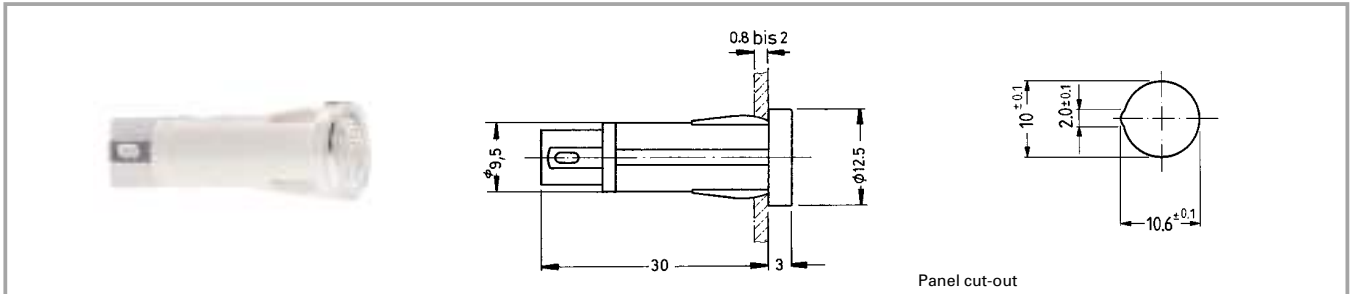
Voltage limit max.	Power limit max.	Lamp	Operating life	Colour of lens	Order no.
28 V	1.2 W	filament lamp	10000 h	transparent colourless	1.69.527.003/1002
28 V	1.2 W	filament lamp	10000 h	transparent red	1.69.527.003/1301
28 V	1.2 W	filament lamp	10000 h	transparent yellow	1.69.527.003/1402
28 V	1.2 W	filament lamp	10000 h	transparent green	1.69.527.003/1502
28 V	1.2 W	filament lamp	10000 h	transparent blue	1.69.527.003/1601
230 V		neon lamp		transparent colourless	1.69.527.104/1002
230 V		neon lamp		transparent red	1.69.527.104/1301
230 V		neon lamp		transparent yellow	1.69.527.104/1402

Technical data see page 3 - 26

3

Integr.
Lamp

Signal lamps with integrated filament/neon lamp, 10 mm



Technical data

General information

Form of lens	see order block
Colour of lens	see order block
Diameter of collar	see order block

Dimensions

Length of collar	see order block
Width of collar	see order block
Overall height	3 mm
Mounting depth	30 mm
Mounting hole	10 mm

Mechanical design

Mounting	pressing into hole
Terminals	see order block
Lamp socket	no
Lamp	see order block

Electrical characteristics

Voltage limit max.	see order block
Power limit max.	see order block

Other specifications

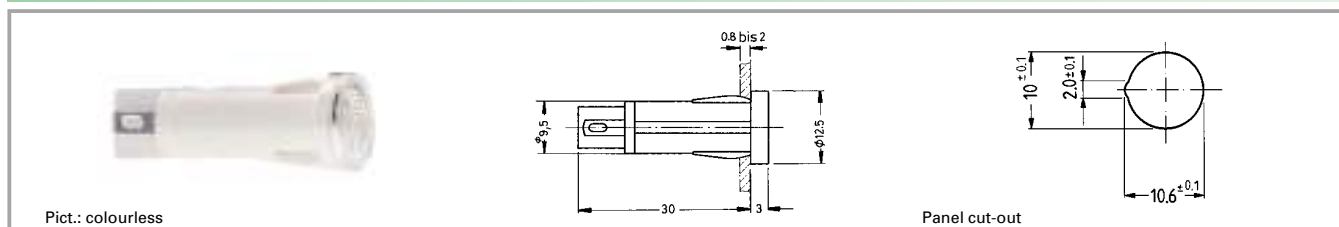
Operating life	see order block
Degree of protection from front side	IP40
Weight	2.5 g
Approvals filament lamp (T = 85°C)	SEV
Approvals neon lamp (T = 120°C)	VDE, SEV

3

Integr.
Lamp

Signal lamps with integrated lamp

Signal lamps with integrated filament/neon lamp, 10 mm, round lens



Voltage limit max.	Power limit max.	Lamp	Terminals	Operating life	Colour of lens	Order no.
14 V	1.2 W	filament lamp	quick connector 2.8 x 0.8 tin-plated	15000 h	opaque white	1.69.507.103/0214
14 V	1.2 W	filament lamp	quick connector 2.8 x 0.8 tin-plated	15000 h	transparent colourless	1.69.507.103/1002
14 V	1.2 W	filament lamp	quick connector 2.8 x 0.8 tin-plated	15000 h	transparent red	1.69.507.103/1301
14 V	1.2 W	filament lamp	quick connector 2.8 x 0.8 tin-plated	15000 h	transparent yellow	1.69.507.103/1402
14 V	1.2 W	filament lamp	quick connector 2.8 x 0.8 tin-plated	15000 h	transparent green	1.69.507.103/1502
14 V	1.2 W	filament lamp	quick connector 2.8 x 0.8 tin-plated	15000 h	transparent blue	1.69.507.103/1601
28 V	1.2 W	filament lamp	quick connector 2.8 x 0.8 tin-plated	10000 h	opaque white	1.69.507.105/0214
28 V	1.2 W	filament lamp	quick connector 2.8 x 0.8 tin-plated	10000 h	transparent colourless	1.69.507.105/1002
28 V	1.2 W	filament lamp	quick connector 2.8 x 0.8 tin-plated	10000 h	transparent red	1.69.507.105/1301
28 V	1.2 W	filament lamp	quick connector 2.8 x 0.8 tin-plated	10000 h	transparent yellow	1.69.507.105/1402
28 V	1.2 W	filament lamp	quick connector 2.8 x 0.8 tin-plated	10000 h	transparent green	1.69.507.105/1502
28 V	1.2 W	filament lamp	quick connector 2.8 x 0.8 tin-plated	10000 h	transparent blue	1.69.507.105/1601
230 V		neon lamp	quick connector 2.8 x 0.8 tin-plated		transparent colourless	1.69.507.117/1002
230 V		neon lamp	quick connector 2.8 x 0.8 tin-plated		transparent red	1.69.507.117/1301
230 V		neon lamp	quick connector 2.8 x 0.8 tin-plated		transparent yellow	1.69.507.117/1402
230 V		neon lamp	quick connector 2.8 x 0.8 tin-plated		transparent green	1.69.507.118/1502

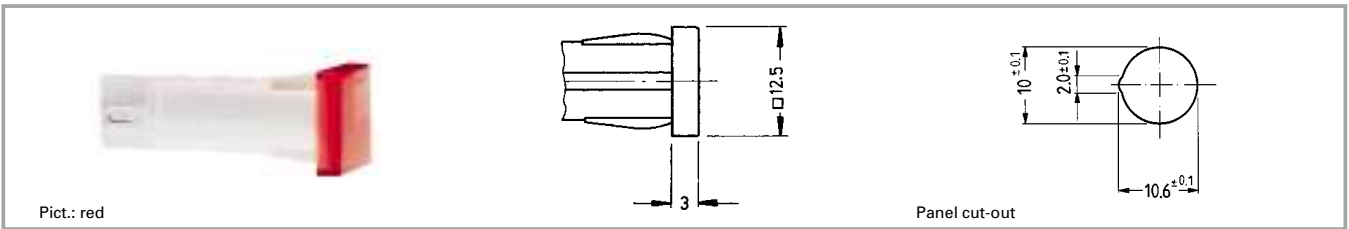
Technical data see page 3 - 28

Other voltages and versions with connection cable on request.

3

Integr.
Lamp

Signal lamps with integrated filament/neon lamp, 10 mm, square lens



Voltage limit max.	Power limit max.	Lamp	Terminals	Operating life	Colour of lens	Order no.
14 V	1.2 W	filament lamp	quick connector 2.8 x 0.8 tin-plated	15000 h	opaque white	1.69.507.123/0214
14 V	1.2 W	filament lamp	quick connector 2.8 x 0.8 tin-plated	15000 h	transparent colourless	1.69.507.123/1002
14 V	1.2 W	filament lamp	quick connector 2.8 x 0.8 tin-plated	15000 h	transparent red	1.69.507.123/1301
14 V	1.2 W	filament lamp	quick connector 2.8 x 0.8 tin-plated	15000 h	transparent yellow	1.69.507.123/1402
14 V	1.2 W	filament lamp	quick connector 2.8 x 0.8 tin-plated	15000 h	transparent green	1.69.507.123/1502
14 V	1.2 W	filament lamp	quick connector 2.8 x 0.8 tin-plated	15000 h	transparent blue	1.69.507.123/1601
28 V	1.2 W	filament lamp	quick connector 2.8 x 0.8 tin-plated	10000 h	opaque white	1.69.507.125/0214
28 V	1.2 W	filament lamp	quick connector 2.8 x 0.8 tin-plated	10000 h	transparent colourless	1.69.507.125/1002
28 V	1.2 W	filament lamp	quick connector 2.8 x 0.8 tin-plated	10000 h	transparent red	1.69.507.125/1301
28 V	1.2 W	filament lamp	quick connector 2.8 x 0.8 tin-plated	10000 h	transparent yellow	1.69.507.125/1402
28 V	1.2 W	filament lamp	quick connector 2.8 x 0.8 tin-plated	10000 h	transparent green	1.69.507.125/1502
28 V	1.2 W	filament lamp	quick connector 2.8 x 0.8 tin-plated	10000 h	transparent blue	1.69.507.125/1601
230 V		neon lamp	quick connector 2.8 x 0.8 tin-plated		transparent colourless	1.69.507.137/1002
230 V		neon lamp	quick connector 2.8 x 0.8 tin-plated		transparent red	1.69.507.137/1301
230 V		neon lamp	quick connector 2.8 x 0.8 tin-plated		transparent yellow	1.69.507.137/1402
230 V		neon lamp	quick connector 2.8 x 0.8 tin-plated		transparent green	1.69.507.138/1502

Technical data see page 3 - 28

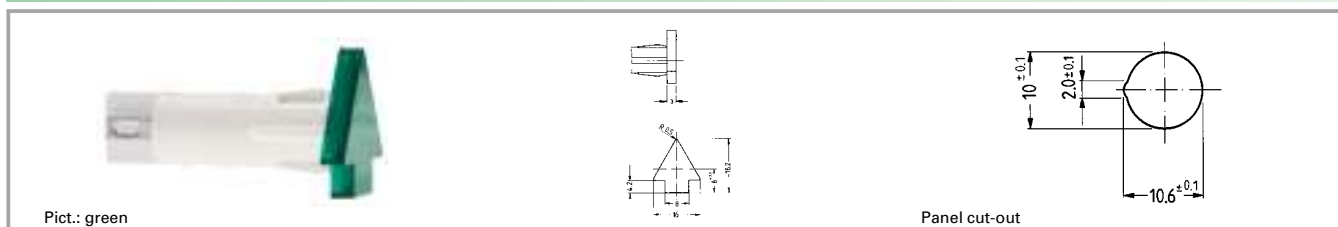
Other voltages and versions with connection cable on request.

3

Integr.
Lamp

Signal lamps with integrated lamp

Signal lamps with integrated filament/neon lamp, 10 mm, lens in arrow shape



Voltage limit max.	Power limit max.	Lamp	Terminals	Operating life	Colour of lens	Order no.
14 V	1.2 W	filament lamp	quick connector 2.8 x 0.8 tin-plated	15000 h	opaque white	1.69.507.143/0214
14 V	1.2 W	filament lamp	quick connector 2.8 x 0.8 tin-plated	15000 h	transparent colourless	1.69.507.143/1002
14 V	1.2 W	filament lamp	quick connector 2.8 x 0.8 tin-plated	15000 h	transparent red	1.69.507.143/1301
14 V	1.2 W	filament lamp	quick connector 2.8 x 0.8 tin-plated	15000 h	transparent yellow	1.69.507.143/1402
14 V	1.2 W	filament lamp	quick connector 2.8 x 0.8 tin-plated	15000 h	transparent green	1.69.507.143/1502
14 V	1.2 W	filament lamp	quick connector 2.8 x 0.8 tin-plated	15000 h	transparent blue	1.69.507.143/1601
28 V	1.2 W	filament lamp	quick connector 2.8 x 0.8 tin-plated	10000 h	opaque white	1.69.507.145/0214
28 V	1.2 W	filament lamp	quick connector 2.8 x 0.8 tin-plated	10000 h	transparent colourless	1.69.507.145/1002
28 V	1.2 W	filament lamp	quick connector 2.8 x 0.8 tin-plated	10000 h	transparent red	1.69.507.145/1301
28 V	1.2 W	filament lamp	quick connector 2.8 x 0.8 tin-plated	10000 h	transparent yellow	1.69.507.145/1402
28 V	1.2 W	filament lamp	quick connector 2.8 x 0.8 tin-plated	10000 h	transparent green	1.69.507.145/1502
28 V	1.2 W	filament lamp	quick connector 2.8 x 0.8 tin-plated	10000 h	transparent blue	1.69.507.145/1601
230 V		neon lamp	quick connector 2.8 x 0.8 tin-plated		transparent colourless	1.69.507.157/1002
230 V		neon lamp	quick connector 2.8 x 0.8 tin-plated		transparent red	1.69.507.157/1301
230 V		neon lamp	quick connector 2.8 x 0.8 tin-plated		transparent yellow	1.69.507.157/1402
230 V		neon lamp	quick connector 2.8 x 0.8 tin-plated		transparent green	1.69.507.158/1502

Technical data see page 3 - 28

Other voltages and versions with connection cable on request.

3

Integr.
Lamp

Signal lamps with integrated filament/neon lamp, 14 mm



Technical data

General information

Form of lens see order block
 Colour of lens see order block
 Diameter of collar see order block

Dimensions

Length of collar see order block
 Width of collar see order block
 Overall height 4 mm
 Mounting depth see order block
 Mounting hole 14 mm

Mechanical design

Mounting pressing into hole
 Terminals see order block
 Lamp socket no
 Lamp see order block

Electrical characteristics

Voltage limit max. see order block
 Power limit max. 1.2 W

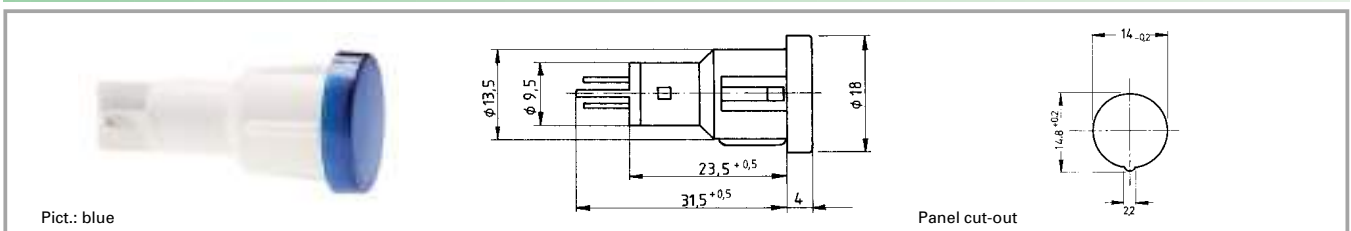
Other specifications

Operating life see order block
 Degree of protection from front side IP40
 Weight 5 g
 Approvals at 1.5 mA (T 85°C) VDE, SEV, FEMKO, DEMKO

3

Integr.
Lamp

Signal lamps with integrated filament lamp, 14 mm, round lens, 28 V



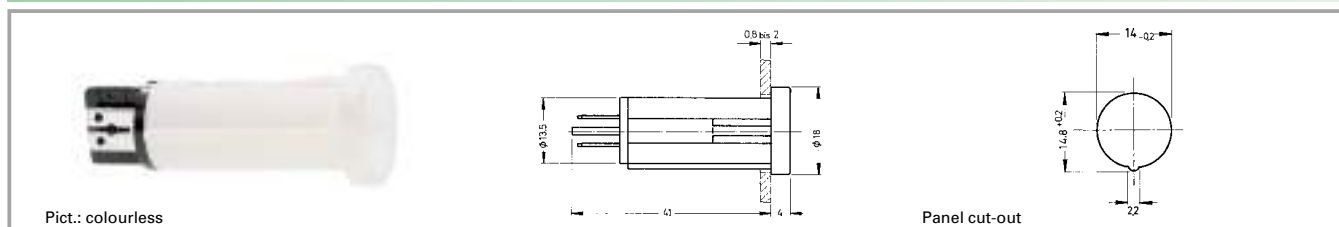
Pict.: blue

Voltage limit max.	Power limit max.	Lamp	Terminals	Operating life	Colour of lens	Order no.
28 V	1.2 W	filament lamp	quick connector 2.8 x 0.8 tin-plated	15000 h	transparent colourless	1.69.523.003/1002
28 V	1.2 W	filament lamp	quick connector 2.8 x 0.8 tin-plated	15000 h	transparent red	1.69.523.003/1301
28 V	1.2 W	filament lamp	quick connector 2.8 x 0.8 tin-plated	15000 h	transparent yellow	1.69.523.003/1402
28 V	1.2 W	filament lamp	quick connector 2.8 x 0.8 tin-plated	15000 h	transparent green	1.69.523.003/1502
28 V	1.2 W	filament lamp	quick connector 2.8 x 0.8 tin-plated	15000 h	transparent blue	1.69.523.003/1601

Technical data see page 3 - 32

Signal lamps with integrated lamp

Signal lamps with integrated neon lamp, 14 mm, round lens, 230 V



Voltage limit max.	Power limit max.	Lamp	Terminals	Operating life	Colour of lens	Order no.
230 V	1.2 W	neon lamp	quick connector 6.3 x 0.8 tin-plated		transparent colourless	1.02.614.502/1002
230 V	1.2 W	neon lamp	quick connector 6.3 x 0.8 tin-plated		transparent red	1.02.614.502/1301
230 V	1.2 W	neon lamp	quick connector 6.3 x 0.8 tin-plated		transparent yellow	1.02.614.502/1402
230 V	1.2 W	neon lamp	quick connector 2.8 x 0.8 tin-plated		transparent green	1.02.614.503/1502

Technical data see page 3 - 32

3

Integr.
Lamp