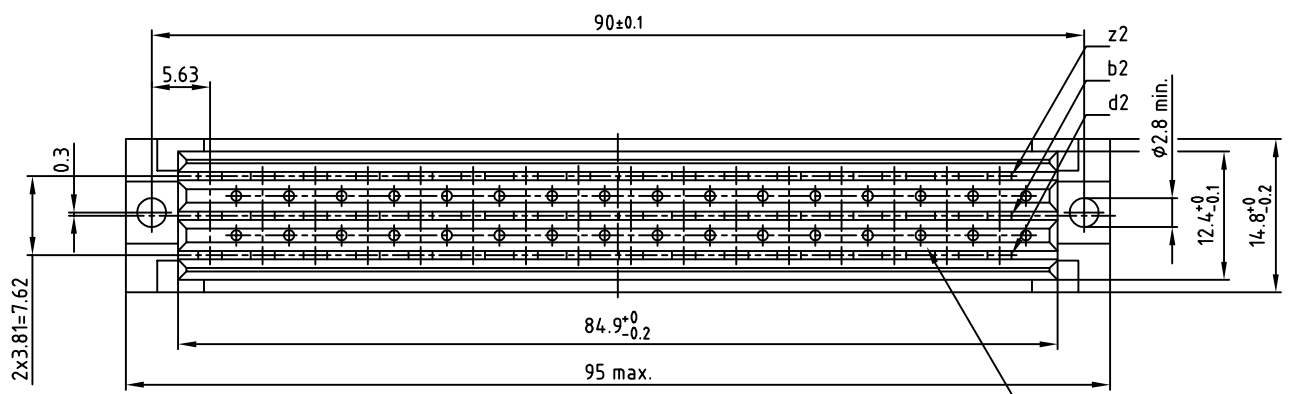
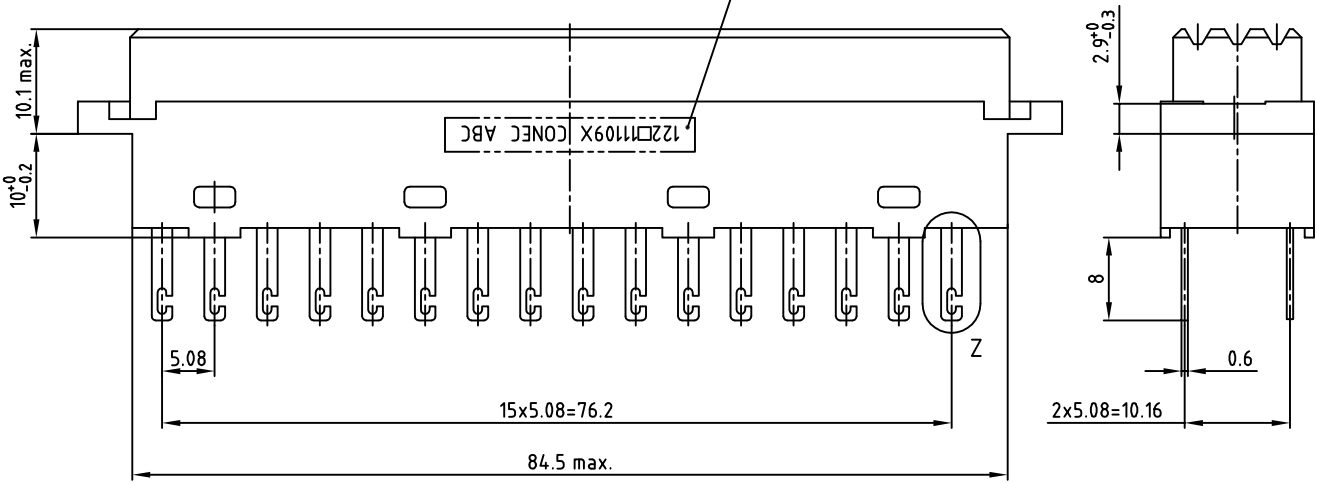


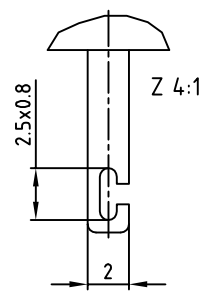
used for: DIN EN 60603-2 TYPE "F"

SEE NOTE 3

122□1109X CONEC ABC



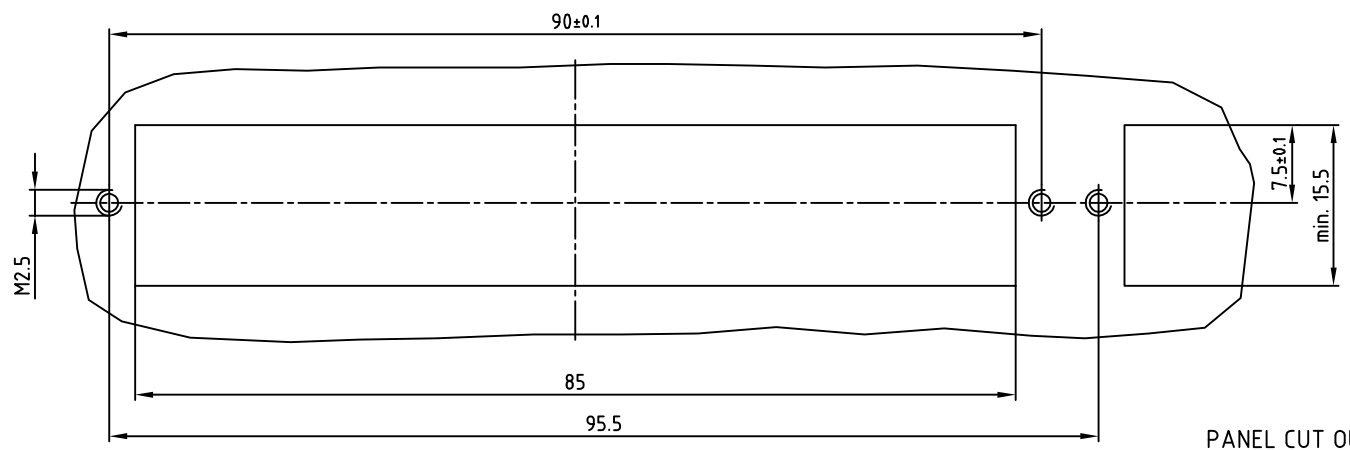
32 HOLES FOR CODE PINS



NOTES:

- 1. INSULATOR: PBT GF UL 94 V-0; GREY
- 2. CONTACTS: COPPER ALLOY; PLATING (SEE PART-NO.):
  - PLEASE ADD C for GOLD over NICKEL; 500 MATING CYCLES
  - PLEASE ADD B for GOLD over NICKEL; 400 MATING CYCLES
  - PLEASE ADD A for GOLD over NICKEL; 50 MATING CYCLES
- 3. CONNECTOR IS PART MARKED: 122□1109X CONEC ABC (SEE NOTE 2)

Directive 2002/95/EC RoHS compliant



PANEL CUT OUT

APPROVAL # FREIGABE # DEBLOCAGE # AUTORIZACION # APPROVAL

CUSTOMER APPROVAL DATE:

NAME: TITLE:

COMPANY NAME:

APPROVAL # FREIGABE # DEBLOCAGE # AUTORIZACION # APPROVAL

THIS DRAWING MAY NOT BE COPIED OR REPRODUCED IN ANY WAY, AND MAY NOT BE PASSED ON TO A THIRD PARTY, WITHOUT WRITTEN PERMISSION. OWNERSHIP AND COPYRIGHT OF CONEC GmbH DO NOT ALTER CAD DRAWING BY HAND

2 x b	Ä4932	24.09.2013	Lehm.
a	Original		
rev.	description	date	name

tolerance		dim. in mm	
2008	date	name	
drawn	09.12.	Lehmenkühler	
appd.	09.12.	Mickenbecker	
norm	DIN EN 60603-2		
d-old			

scale: 2:1 (4:1)

material: SEE NOTES

title: FEMALE CONNECTOR TYPE "F"  
32pos. SOLDER LUG

dwg no: AutoCAD 2006 DIN-A 3 sh: 1/1

part no: 12K1A619

part no: 122□1109X (SEE NOTE 2)

