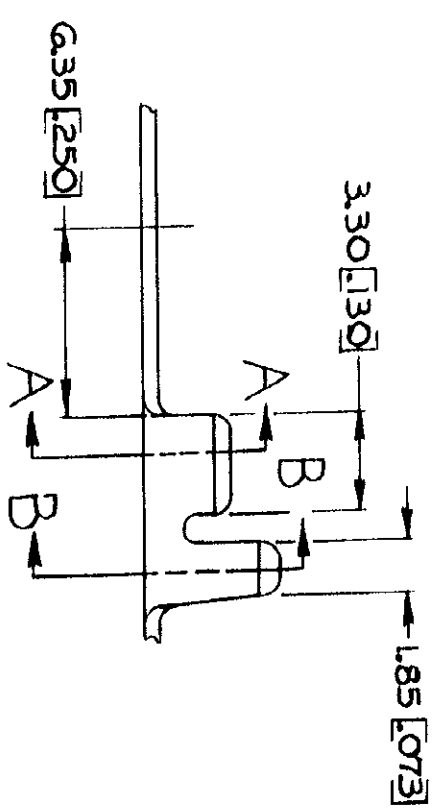
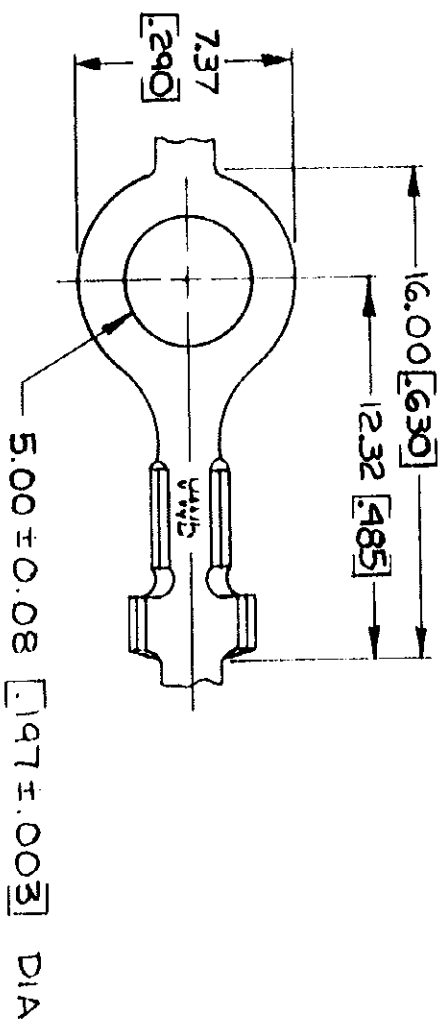
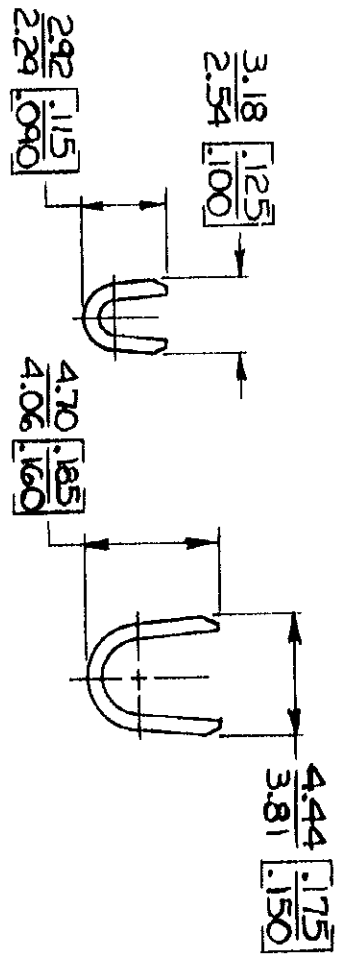


© COPYRIGHT 1964 BY AMP INCORPORATED, HARRISBURG, PA.  
 ALL INTERNATIONAL RIGHTS RESERVED. AMP INCORPORATED PRODUCTS  
 COVERED BY U. S. AND FOREIGN PATENTS AND/OR PATENTS PENDING.



1. CONTINUOUS STRIP ON REELS
2. DIMENSIONS IN BRACKETS ARE IN INCHES.



SECT A-A                      SECT B-B

REVISIONS		DATE	APPROVED
P	F	4-3-94	[Signature]
	ZONE		
	LTR		
	DESCRIPTION		
	BEDRAWN & REVISED		
		6/22/78	[Signature]

STUD SIZE	WIRE RANGE	INSULATION RANGE	FINISH	MATERIAL	PART NO
# 10	02-0.6 mm <sup>2</sup> [24-20]	203-2.54 [080-100]	TIN	0.5 GRASS [020]	41582
UNLESS OTHERWISE SPECIFIED DIMENSIONS ARE IN MILLIMETERS TOLERANCES ON: DECIMALS ±0.30(0.5) ANGLES ±1°					
CONTRACT NO			NAME		
DR <i>Design by</i> <i>elz/jr</i>			AMP INCORPORATED Harrisburg, Pa.		
CHK <i>K. J. Jorgens 7-25-78</i>			RING		
APPD <i>P. T. Nantz 8-8-76</i>			SIZE		
APPD <i>P. J. Nichols 8-10-78</i>			CODE IDENT NO		
DSGN APPD			DRAWING NO		
OTHER APPD			SCALE		
FINISH			B		
SEE TABLE			00779		
			41582		
			SHEET		

**METRIC**

**CUSTOMER DRAWING**