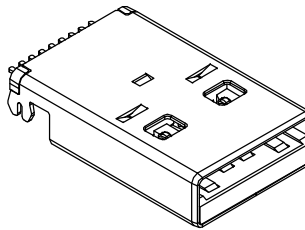
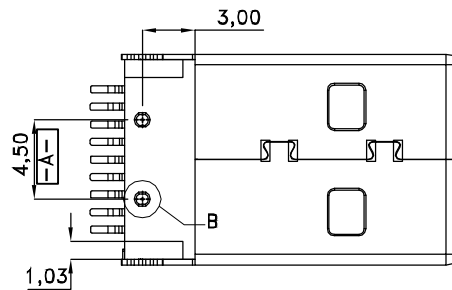
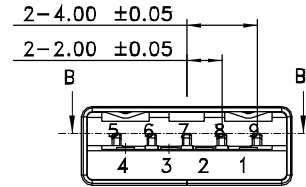
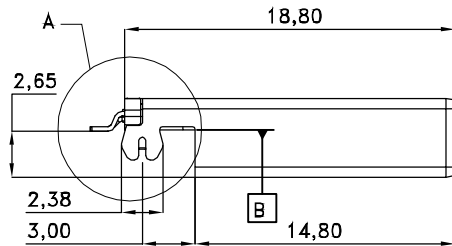
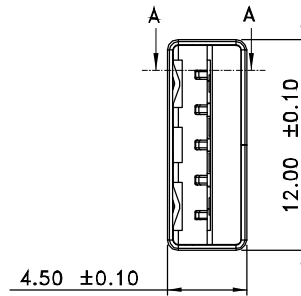
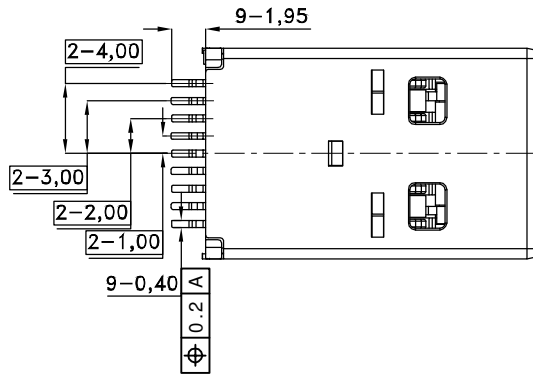


① **USB3.0 COMPLIANT**



**NOTES:**

Material:  
 Insulator: Thermoplastic Blue(Pantone 300C) UL94HB  
 Contact: Copper Alloy  
 Shell: Steel  
 ② Shell plating: Nickel plated

Contact Plating:  
 Contact Area: 30u" Pd-Ni+2u" Gold  
 Solder tails Area: 100u"~200u" Matte Tin  
 Under plate: 80u" Nickel

**ELECTRICAL:**  
 Current Rating: 1.8Amps max. shall be applied to Vbus pin and its corresponding GND pin.  
 0.25Amp min. shall be applied to all the other contacts.

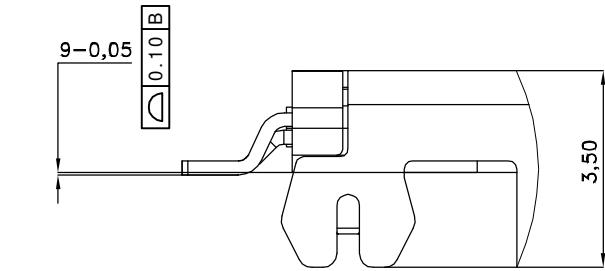
Contact Resistance:  
 30mΩ max. initial for VBUS and GND contacts  
 50mΩ max. initial for All other contacts  
 Insulation Resistance:100 MΩ min. @ 250VDC  
 Dielectric withstanding voltage: 100V AC / MINUTE  
 Temperature range: -20°C TO +85°C  
 Mating cycles: 5000 insertions

PACKIING: Tray

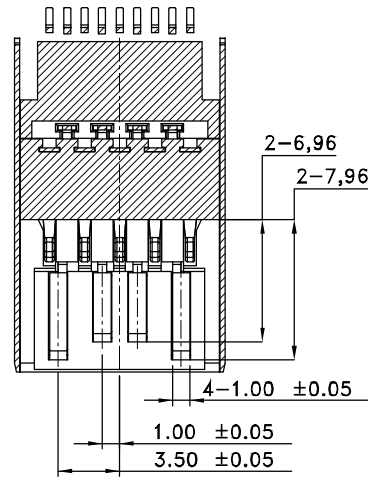
**RoHS compliant**  
 Unit: mm

Scale	Free				Date	Name	Customer-No.		
<b>TOLERANCE</b>					Drawn	10.06.2010	Alex		
X.	±0.50	③	Correction WSW P/N	21.12.2016	S.Bölling	Approved	04.07.2016	Amy	ASSMANN WSW-No. ③A-USB3 A-LP-SMT
X.X	±0.30	②	Update to new part and Change Shell plating	04.07.2016	Amy				Drawing-No.
X.XX	±0.20	①	Add the "USB3.0 COMPLIANT"	08.04.2014	Winnie			ASS 4221 CO	rev03
DIM	TOL	①						Replace	SHEET
Angle	±5°	①	Drawn	10.06.2010	Alex				
Angle	TOL	Id.	Modification	Date	Name				

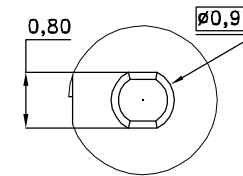
① **USB3.0 COMPLIANT**



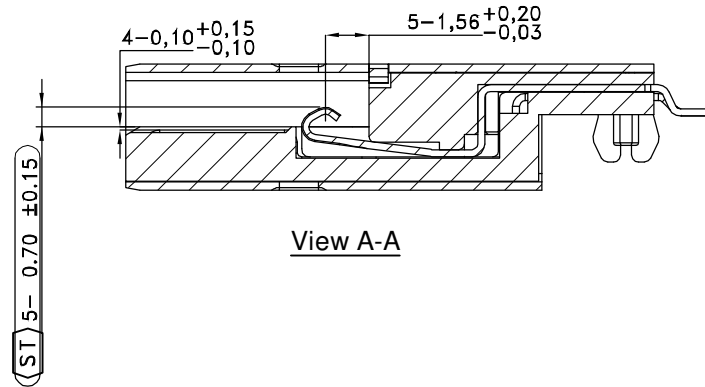
Detail A



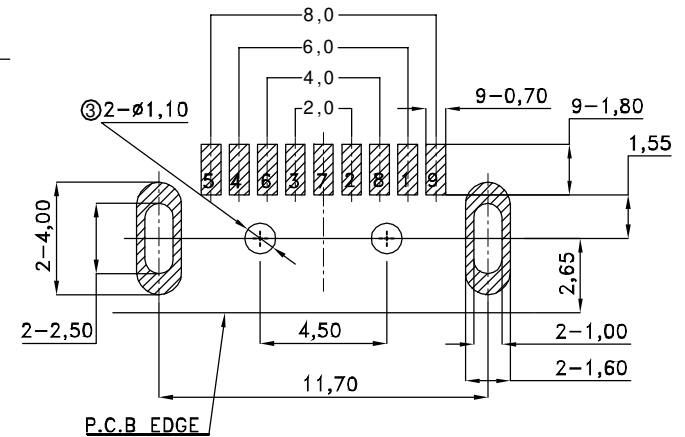
View B-B



Detail B



View A-A



Recommended PCB Layout  
Tolerance: ±0.05mm

**RoHS compliant**  
Unit: mm

Scale	Free				Date	Name	Customer-No.
<b>TOLERANCE</b>					Drawn	10.06.2010	Alex
X.	±0.50				Approved	04.07.2016	Amy
X.X	±0.30	③	Correction WSW P/N	21.12.2016	S.Bölling		ASSMANN WSW-No. ③ A-USB3 A-LP-SMT
X.XX	±0.20	②	Update to new part and Change Shell plating	04.07.2016	Amy		Drawing-No.
DIM	TOL	①	Add the "USB3.0 COMPLIANT"	08.04.2014	Winnie	<div style="display: flex; justify-content: space-between;"> <div style="text-align: center;">  </div> <div style="text-align: center;"> <p><b>ASS 4221 CO</b></p> <p>rev03</p> </div> </div>	
Angle	±5°	①	Drawn	10.06.2010	Alex		
Angle	TOL	Id.	Modification	Date	Name	Replace	SHEET 2 / 2