



Mechanically held lighting contactor. Contactor amp rating 20Amp 0NC \_ 12NO poles, 208-240V 50/60HZ coil, Non-combination type, Enclosure NEMA type 12, Dust/drip proof for indoors

product brand name	Class CLM
design of the product	Mechanically held lighting contactor
special product feature	Energy efficient; Quiet operation
<b>General technical data</b>	
weight [lb]	9 lb
Height x Width x Depth [in]	16 × 13 × 6 in
touch protection against electrical shock	NA for enclosed products
installation altitude [ft] at height above sea level maximum	6560 ft
country of origin	USA
<b>Contactors</b>	
size of contactor	20 Amp
number of NO contacts for main contacts	12
number of NC contacts for main contacts	0
operating voltage for main current circuit at AC at 60 Hz maximum	600 V
contact rating of the main contacts of lighting contactor	
• at tungsten (1 pole per 1 phase) rated value	20A @250V 1p 1ph
• at tungsten (2 poles per 1 phase) rated value	20A @250V 2p 1ph
• at tungsten (3 poles per 3 phases) rated value	20A @250V 3p 3ph
• at ballast (1 pole per 1 phase) rated value	20A @347V 1p 1ph
• at ballast (2 poles per 1 phase) rated value	20A @600V 2p 1ph
• at ballast (3 poles per 3 phases) rated value	20A @600V 3p 3ph
• at resistive load (1 pole per 1 phase) rated value	30A @347V 1p 1ph
• at resistive load (2 poles per 1 phase) rated value	30A @600V 2p 1ph
• at resistive load (3 poles per 3 phases) rated value	30A @600V 3p 3ph
<b>Auxiliary contact</b>	
number of NC contacts for auxiliary contacts	0
number of NO contacts for auxiliary contacts	0
number of total auxiliary contacts maximum	4
contact rating of auxiliary contacts of contactor according to UL	NA
<b>Coil</b>	
type of voltage of the control supply voltage	AC
control supply voltage	
• at AC at 50 Hz rated value	208 ... 240 V
• at AC at 60 Hz rated value	208 ... 240 V
apparent pick-up power of magnet coil at AC	600 VA
apparent holding power of magnet coil at AC	6 VA
operating range factor control supply voltage rated value of magnet coil	0.85 ... 1.1
<b>Enclosure</b>	
degree of protection NEMA rating of the enclosure	NEMA 12 enclosure

design of the housing	dustproof and drip-proof for indoor use
<b>Mounting/wiring</b>	
mounting position	Vertical
fastening method	Surface mounting and installation
type of electrical connection for supply voltage line-side	Screw-type terminals
tightening torque [lbf-in] for supply	18 ... 18 lbf-in
type of connectable conductor cross-sections at line-side for AWG cables single or multi-stranded	2x (18 ... 10 AWG)
temperature of the conductor for supply maximum permissible	75 °C
material of the conductor for supply	CU
type of electrical connection for load-side outgoing feeder	Screw-type terminals
tightening torque [lbf-in] for load-side outgoing feeder	18 ... 18 lbf-in
type of connectable conductor cross-sections for AWG cables for load-side outgoing feeder single or multi-stranded	2x (18 ... 10 AWG)
temperature of the conductor for load-side outgoing feeder maximum permissible	75 °C
material of the conductor for load-side outgoing feeder	CU
type of electrical connection of magnet coil	Screw-type terminals
tightening torque [lbf-in] at magnet coil	18 ... 18 lbf-in
type of connectable conductor cross-sections of magnet coil for AWG cables single or multi-stranded	2x (18 ... 10 AWG)
temperature of the conductor at magnet coil maximum permissible	75 °C
material of the conductor at magnet coil	CU
<b>Short-circuit current rating</b>	
design of the fuse link for short-circuit protection of the main circuit required	none
design of the short-circuit trip	Thermal magnetic circuit breaker
maximum short-circuit current breaking capacity (I <sub>cu</sub> )	
• at 240 V	5 kA
• at 480 V	5 kA
• at 600 V	5 kA
certificate of suitability	NEMA ICS 2; UL 508; CSA 22.2, No. 14

#### Further information

**Industrial Controls - Product Overview (Catalogs, Brochures,...)**

[www.usa.siemens.com/iccatalog](http://www.usa.siemens.com/iccatalog)

**Industry Mall (Online ordering system)**

<https://mall.industry.siemens.com/mall/en/us/Catalog/product?mlfb=US2:CLM2B12240>

**Service&Support (Manuals, Certificates, Characteristics, FAQs,...)**

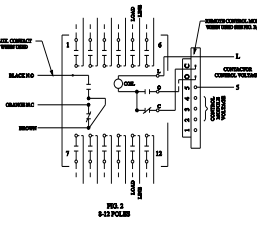
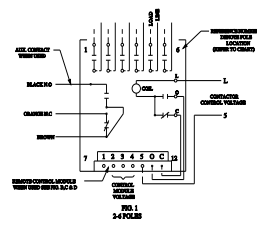
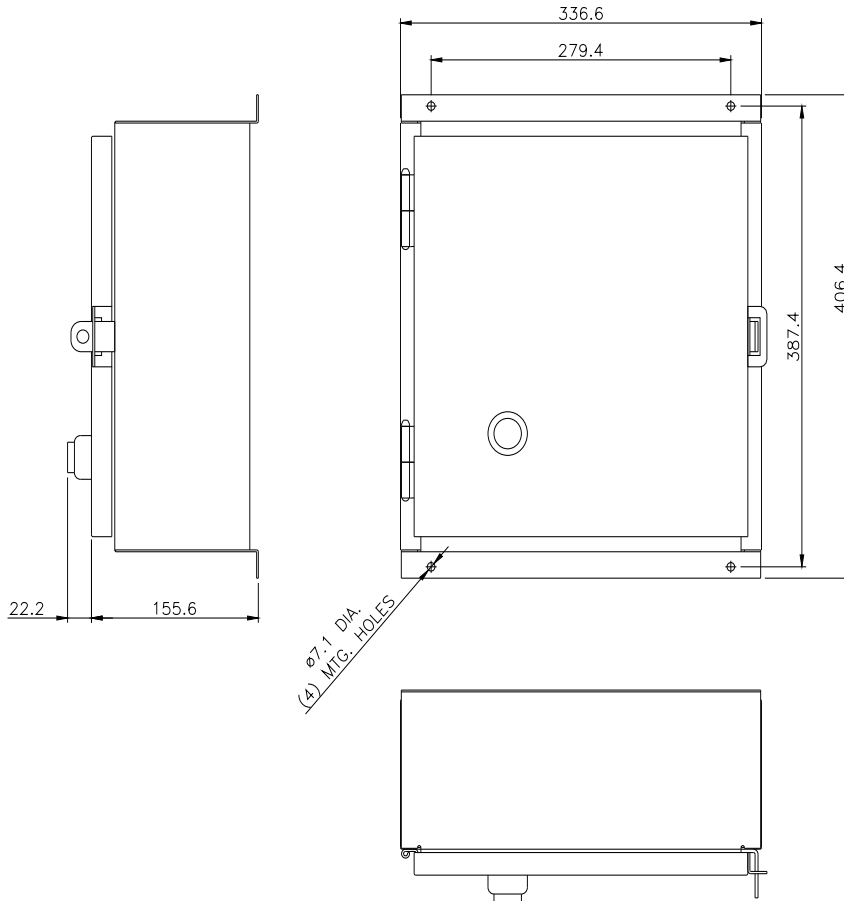
<https://support.industry.siemens.com/cs/US/en/ps/US2:CLM2B12240>

**Image database (product images, 2D dimension drawings, 3D models, device circuit diagrams, EPLAN macros, ...)**

[http://www.automation.siemens.com/bilddb/cax\\_de.aspx?mlfb=US2:CLM2B12240&lang=en](http://www.automation.siemens.com/bilddb/cax_de.aspx?mlfb=US2:CLM2B12240&lang=en)

**Certificates/approvals**

<https://support.industry.siemens.com/cs/US/en/ps/US2:CLM2B12240/certificate>



POLES	LOCATION
2	2, 8
3	2, 3, 8, 5
4	2, 3, 4, 8, 5
6	1-6
8	1-6, 8, 11
10	1-6, 8, 10, 11
12	1-12

MAIN CONTACT MAXIMUM VOLTAGE RATING OR CLASS		
POLES TO LOAD	2 FOR 1	AMPERES CONTINUOUS
20 AC	20 AC	50
27 AC	27 AC	30
48 AC	48 AC	20
60 AC	60 AC	15

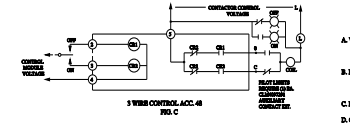
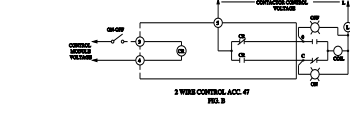
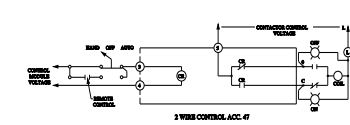
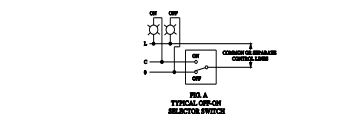
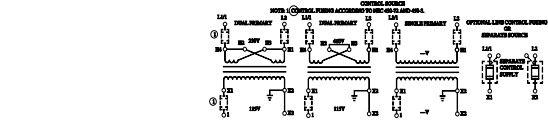
90 AMP. DC  
GENERAL 20V DC MAX. 3 POLES IN SERIES

SWITCH IS SUITABLE FOR USE IN A CIRCUIT CAPABLE OF INTERRUPTING NOT MORE THAN THE RATED STATIONARY CURRENT AT THE MAXIMUM VOLTAGE SHOWN BELOW. THIS IS LIMITED BY A 30 AMP. CIRCUIT BREAKER RATING OF INTERRUPTING RATING OF NOT LESS THAN VALUES SHOWN.

AMPERES	VOLTS
25,000	250
14,000	400
10,000	600

ASSIGNMENT CONTACT RATING ACC. CLASSIFIER (IEC) ACC. CLASSIFIER (IEEE)

20A, 30V 27V AC 60A, 50VDC 65A, 50VDC



MODULE TERMINAL	CONNECT TO
1	NOT USED
2	CONT. STATION FOR ACC. 48 & 49
3	CONT. STATION FOR ACC. 48 & 49
4	INDETERMINATE VOLTAGE*
5	CONTRACTOR CONTROL VOLTAGE
6	TERMINAL O OF CONTRACTOR
7	TERMINAL C OF CONTRACTOR

\* FOR 24 VDC CONTROL MODULES CONNECT TERMINAL 4 TO INHIBITIVE (-)

- GENERAL NOTE
- A. WIRE CONTACTS & LINE VOLTAGE ARE THE SAME. THE CONTRACTOR CONTROL VOLTAGE CAN BE DERIVED FROM THE LINE POLES OF THE CONTACTOR FRAME.
  - B. MAIN CONTACTS ARE SHOWN BY CONTACT WITH CONTROL LINE AS SHOWN. USE A FUSED BLOW-OUT SWITCH (SWITCH SHIPPED WITH CONTACTS CLOSED).
  - C. LINE & LOAD TERMINALS ARE REVERSIBLE.
  - D. CONTACTS ARE BREAK BEFORE MAKE BEING WITH MOMENTARILY INCREASED TRIPPLE COIL OPERATOR MECHANICALLY TRIP IN BOTH OFF & CLOSED POSITIONS.
  - E. CONTRACTOR CONNECTION TO LINE & LOAD WILL ACCEPT 10L, 10LW TO MAIN COIL, 10L THROUGH LINE.
  - F. CONTRACTOR CONNECTION TO ELECTRONIC MODULES (ACC. 45, 46, 48-49) WILL ACCEPT NO. 22AWG TO 12AWG COPPER WIRE. TORQUE CONTACT TERMINALS TO 21 in. lb.
  - G. CONTROL MODULE VOLTAGE SUPPLIED BY CUSTOMER.

24306100401

last modified:

1/25/2022

