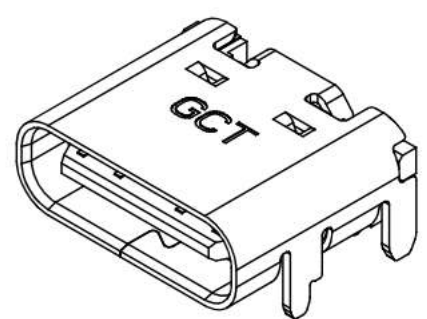


Recommended PCB Layout
As viewed from component side Tolerance: ±0.05mm

▨ Solder Area □ Component Outline



Pin	Signal	Mating Sequence	Pin	Signal	Mating Sequence
A1	GND	First	B12	GND	First
A4	V _{bus}	First	B9	V _{bus}	First
A5	CC1	Second	B8	SBU2	Second
A6	Dp1	Second	B7	Dn2	Second
A7	Dn1	Second	B6	Dp2	Second
A8	SBU1	Second	B5	CC2	Second
A9	V _{bus}	First	B4	V _{bus}	First
A12	GND	First	B1	GND	First
SHELL		GND	SHELL		GND

Specifications

Material
Insulator: LCP, UL 94V-0, Black
Contact: Copper Alloy
Shell: Stainless steel
Mid Plate: Stainless Steel

Plating

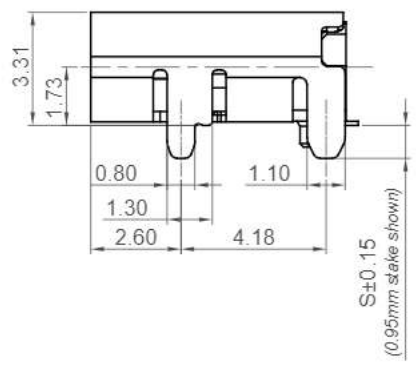
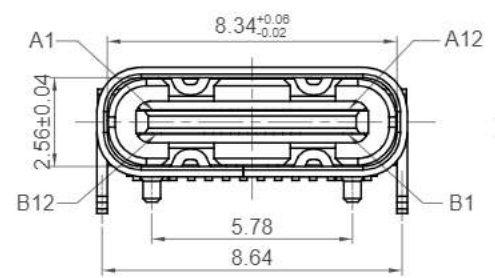
Contact:
Contact Area: See Ordering Grid
Solder Tails: Gold Flash
Underplating: 50µ" min. Nickel All Over
Shell: 30µ" min. Nickel
Mid Plate: Clear

Electrical

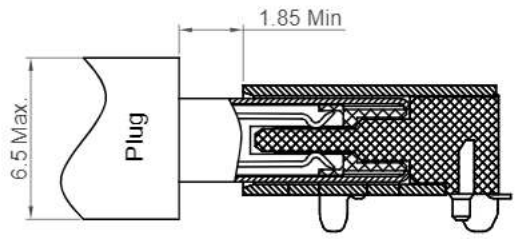
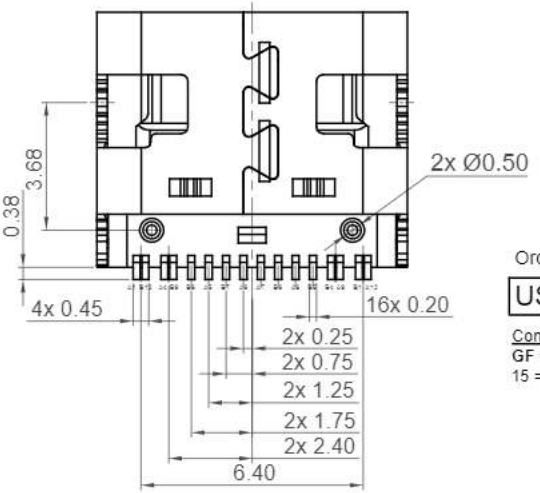
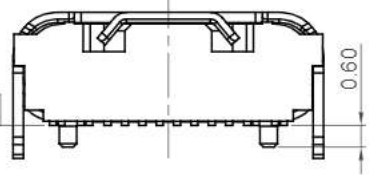
Current Rating: 5.00A collectively for V_{bus} pins
6.25A collectively for GND pins
1.25A for A5/B5 pin
0.25A per pin for all other pins
Voltage Rating: 48V DC
Power Rating: 240W
Contact Resistance: 40mΩ max. initial.
50mΩ max. after test
Dielectric Withstanding Voltage: 100V AC
Insulation Resistance 100MΩ min.

Mechanical & Environmental

Operating Temperature: -40°C to +85°C
Mating Force: 5 to 20 N.
Unmated Force: 6 to 20 N after test
Durability: 20,000 cycles



0.10



Plug and Receptacle Mating View

Ordering Grid

USB4105 - XX - A - XXX Request Samples and Quotation

Contact Plating
GF = Gold Flash (standard)
15 = 15µ" Gold

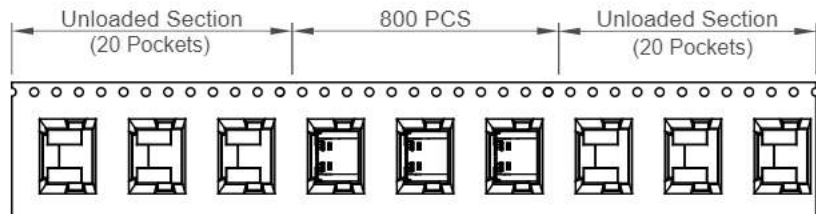
Shell Stake Length "S"
Blank = 0.95mm
060 = 0.60mm
120 = 1.20mm

Packing Options
A = Tape & Reel

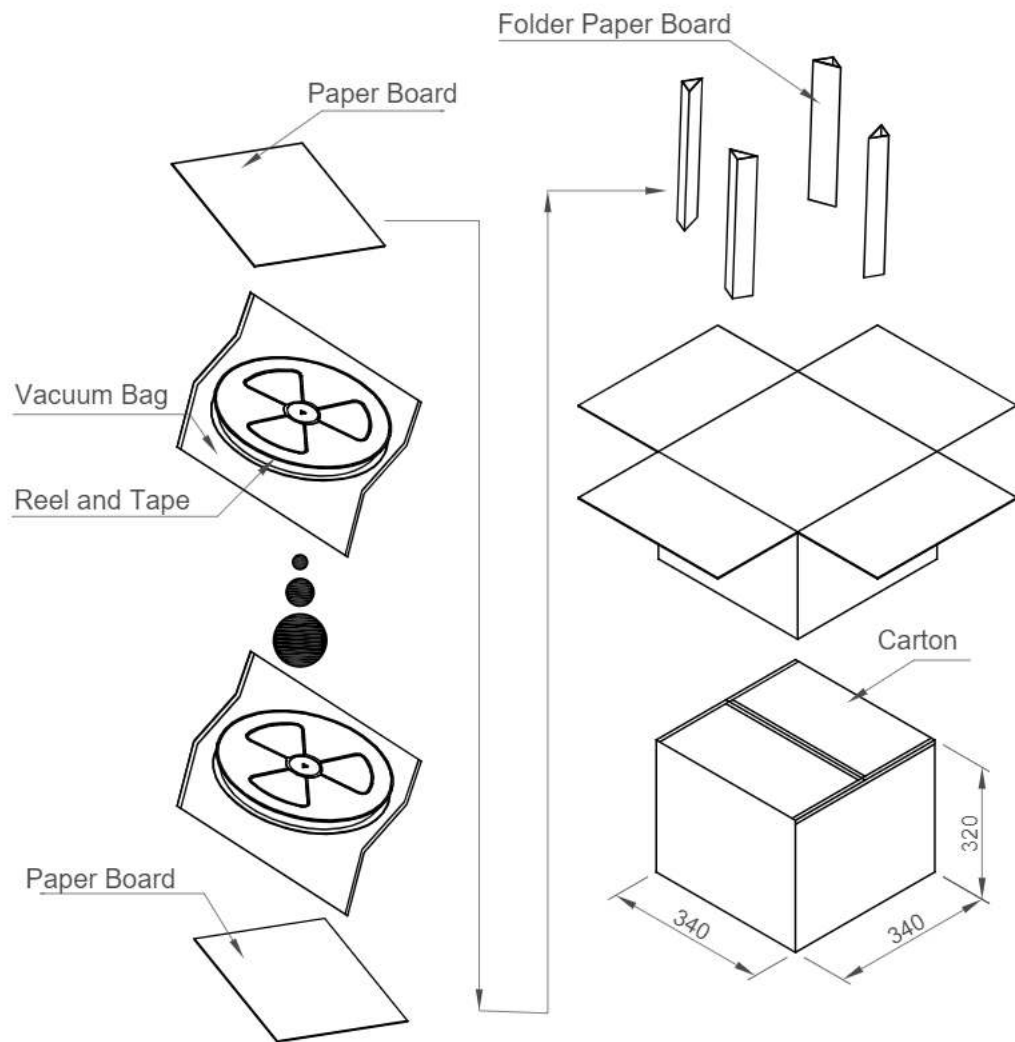
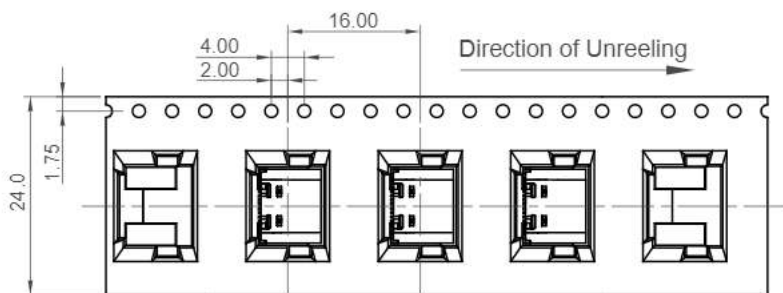
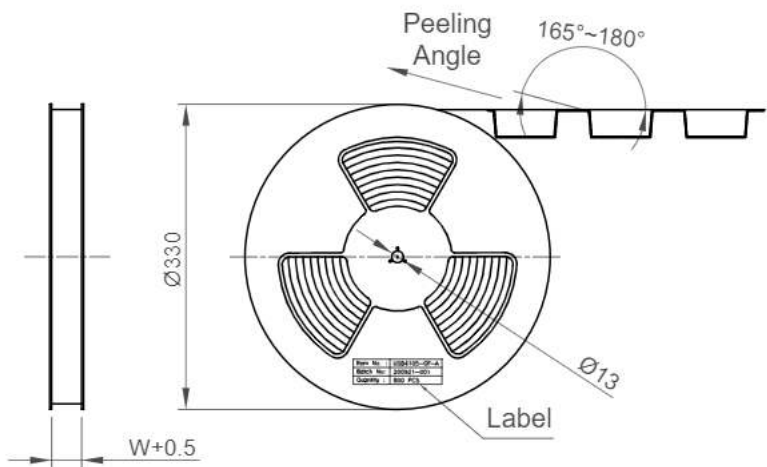
Part Number USB4105		Product Description USB Type C Receptacle for USB 2.0	
Drawing Date 4th October 2019		SMT Type, PCB Top Mount	
By CC	Tolerances (Except as Noted)	Units: Metric (mm)	<p>This drawing is confidential and copyright of Global Connector Technology, Ltd (GCT). This drawing must not be copied or disclosed without written consent. E & OE</p>
Detail USB4105 B PCN	Length X: ± 0.38 XX: ± 0.30 XXX: ± 0.15 X:XX ± 0.10	Angle X: ± 2° X:XX ± 1°	
Revision B3	2nd Angle Projection		
Date 24/02/23			

GCT
www.gct.co

Not to Scale
Drawn By
CC
Sheet No.
1/2



Direction of Unreeling



Pcs / Reel	Reels / Carton	Total Quantity
800	10	8000 pcs

Part Number USB4105		Product Description USB Type C Receptacle for USB 2.0	
Drawing Date 4th October 2019		SMT Type, PCB Top Mount	
By CC	Tolerances (Except as Noted) Length	Units: Metric (mm)	 <small>This drawing is confidential and copyright of Global Connector Technology, Ltd (GCT). This drawing must not be copied or disclosed without written consent. E & OE</small>
Detail USB4105 B PCN	Angle		
Revision B3			
Date 24/02/23			

GCT
www.gct.co

Not to Scale
Drawn By
CC
Sheet No.
2/2