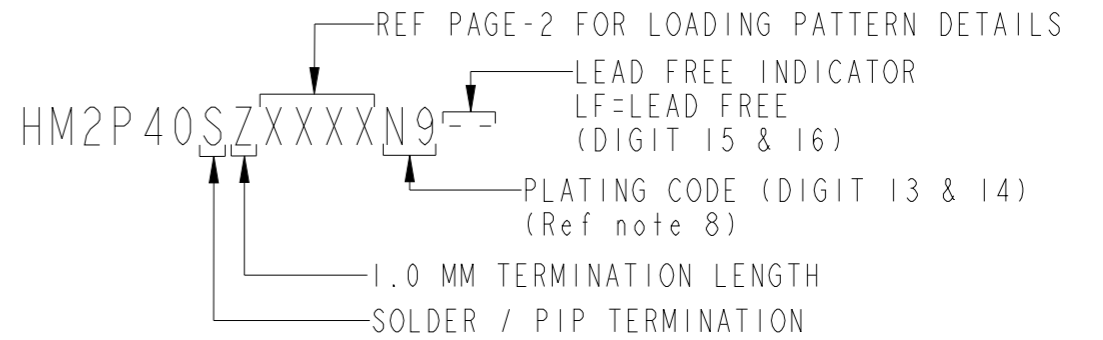
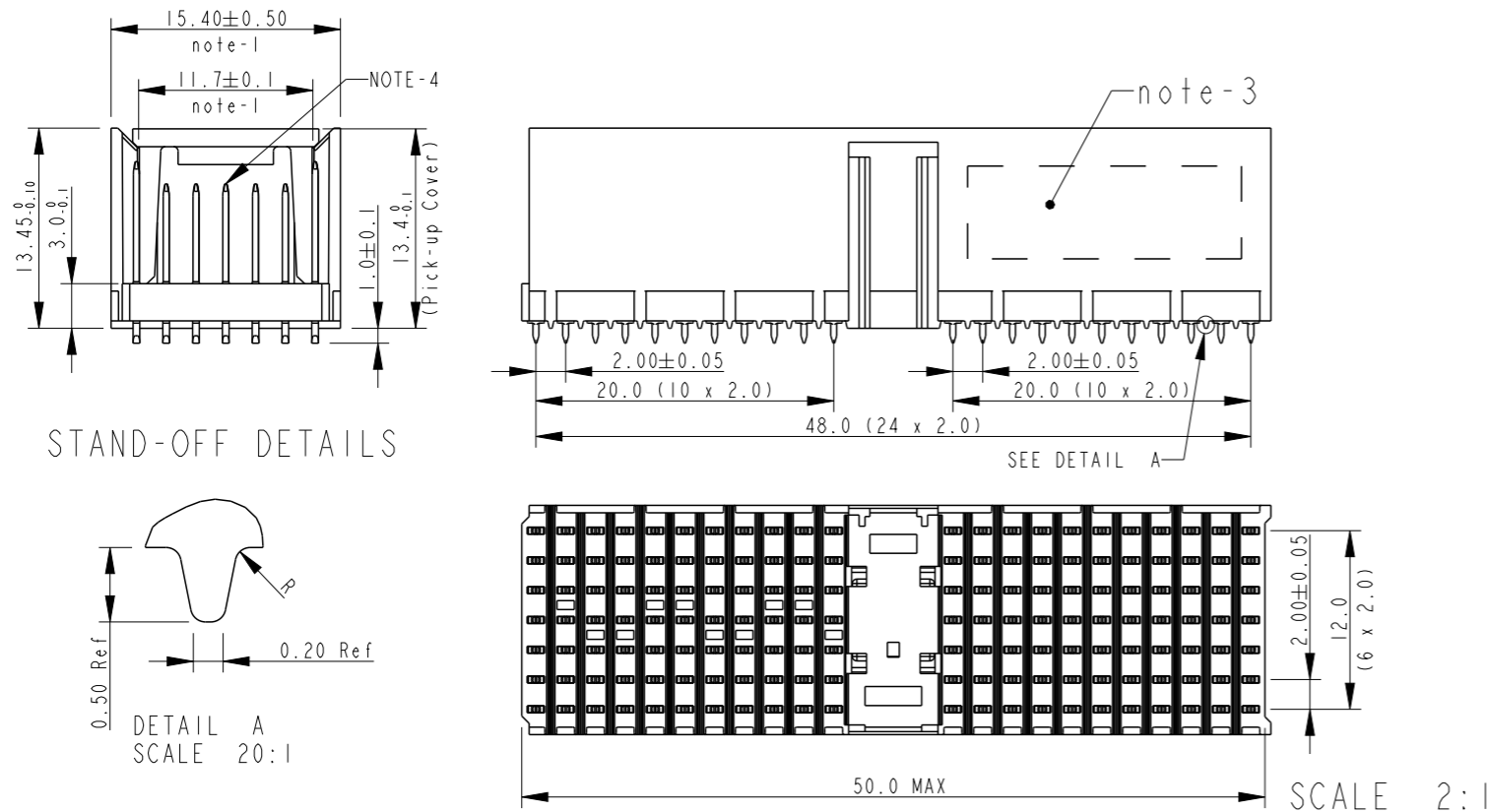
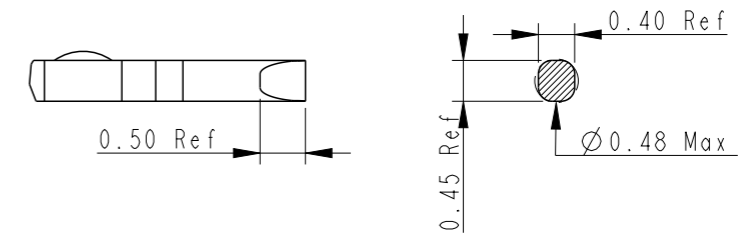


LOADED CONNECTOR ASSEMBLY
(For Eg. HM2P40SZE121----



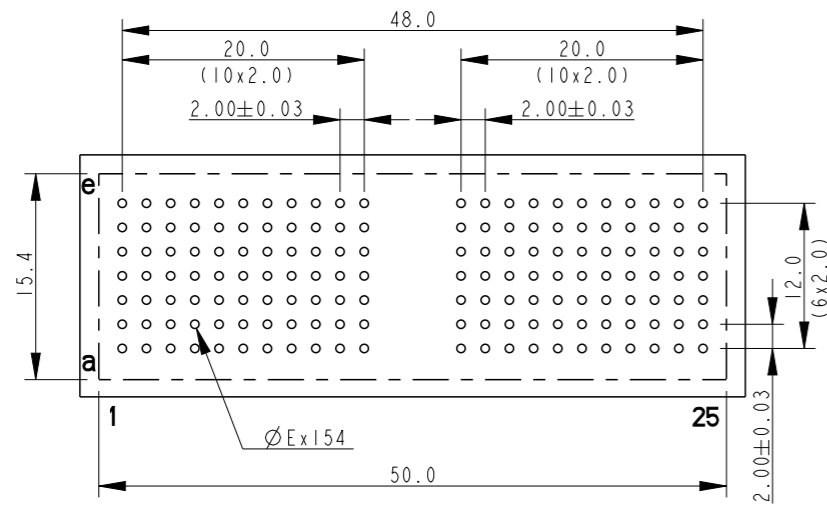
SOLDER TAIL DETAILS

TRUE POSITION = $\oplus 0.1$



SCALE 12:1

PCB LAYOUT & HOLE DIMENSIONS
(For Eg. HM2P40SZE121----



Dim	Finished Hole Dia	Cu Thickness	Sn Thickness	Drilled Hole Dia
E	0.65 - 0.80	0.025 - 0.050	0.008 - 0.012	0.72 - 0.92

True Position (All Holes) = $\oplus 0.05$

NOTES :

- MEASURED AT THE BOTTOM
- MATERIAL CONTACT : PHOSPHOR BRONZE
HOUSING : HIGH TEMPERATURE POLYMER - BLACK
- CONNECTOR PRINTED WITH P/N AND DATE CODE
- FOR ACTUAL CONTACT LOADING, SEE LOADING PATTERN MATING SIDE
- THE SOLDER CONTENT IN THE PASTE SHOULD BE SUFFICIENT TYPICALLY 50% VOLUME PERCENTAGE. THE SCREEN PRINTING PROCESS (ANGLE, SPEED, PRESSURE ETC) MUST BE OPTIMISED SO THAT ENOUGH SOLDER IS AVAILABLE. (PASTE THICKNESS = 0.15MM)
- THE PRODUCT (LF) MEETS EUROPEAN UNION DIRECTIVES AND OTHER COUNTRY REGULATIONS AS DESCRIBED IN GS-22-008
- THIS PRODUCT WITHSTANDS 260°C FOR 10 SECS FOR PIN IN PASTE APPLICATION
- PLATING DETAILS:
TERMINATION SIDE : Sn (MATT FINISH)
CONTACT SIDE : N9 (IEC PERFORMANCE LEVEL 2)
- MISSING INFORMATION & DIMENSIONS PER IEC 61076-4-101

www.fciconnect.com

surface	-	tolerance std	projection	mm
ISO 1302	✓	ISO 406 ISO 1101	\oplus \ominus	
TOLERANCES UNLESS OTHERWISE SPECIFIED				

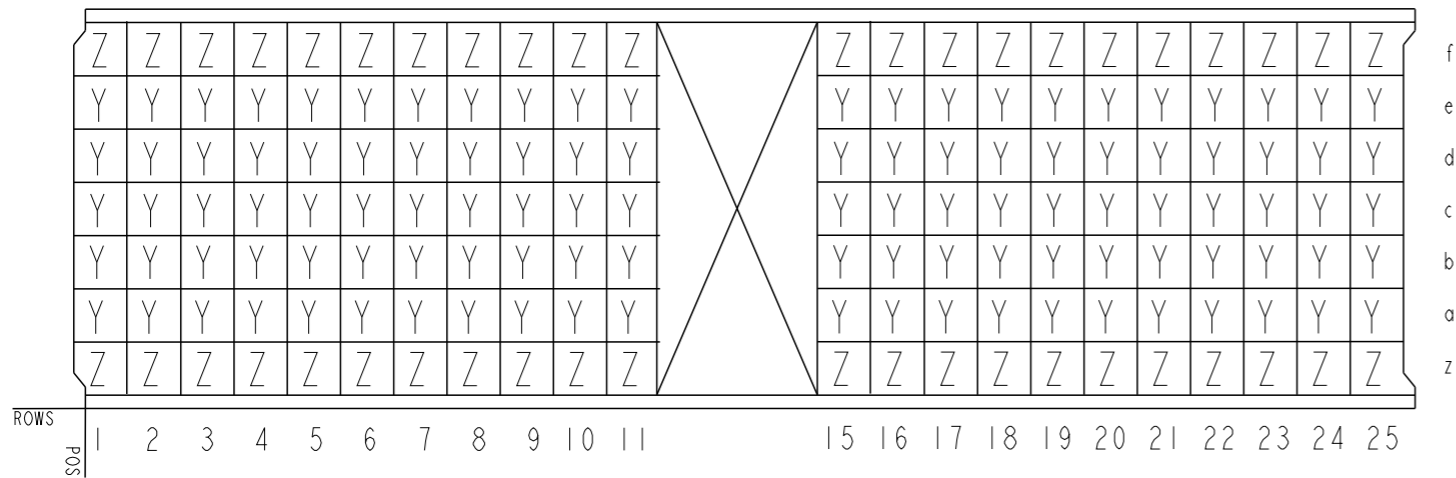
Dr	Alex Babu	2010-05-10	ANGULAR	LINEAR	0.X	±0.2	size	A3	Scale
Eng	Alex Babu	2010-05-10			0.XX	±0.1			
Chr	Biju K Paul	2010-05-10	0°	±1°	0.XXX	±0.05	ECN	110-0110	
Appr	Biju K Paul	2010-05-10	Product family		MILLIPACS	Spec ref		-	

rev	ecn no	dr	date
0	110-0110	AB	2010-05-10
1	110-0110	AB	2011-02-03
2	110-0110	AB	2011-03-09
3	110-0110	AB	2011-06-21
A	111-0110	AB	2011-06-30
-	-	-	-
-	-	-	-

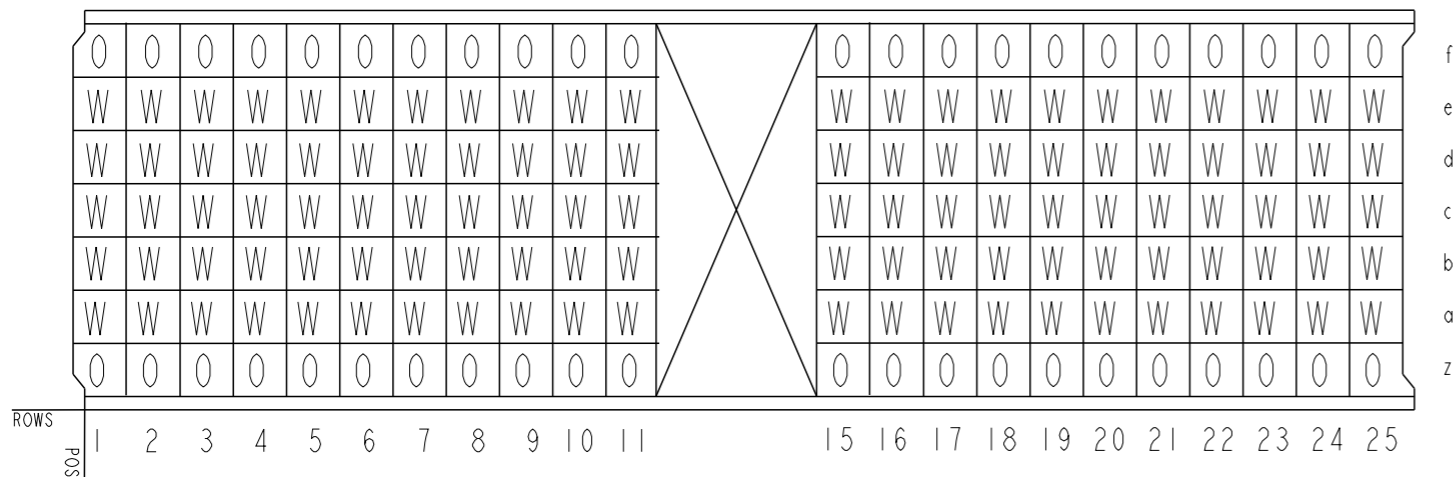
FCI	MILLIPACS TYPE-ANP STR HDR	dwg no	BSC203204005	Rev.	A
	PIP VERSION	CUSTOMER DRAWING		sheet 1 of 3	
catalog no		HM2P40SZ-----			

LOADING PATTERN MATING SIDE

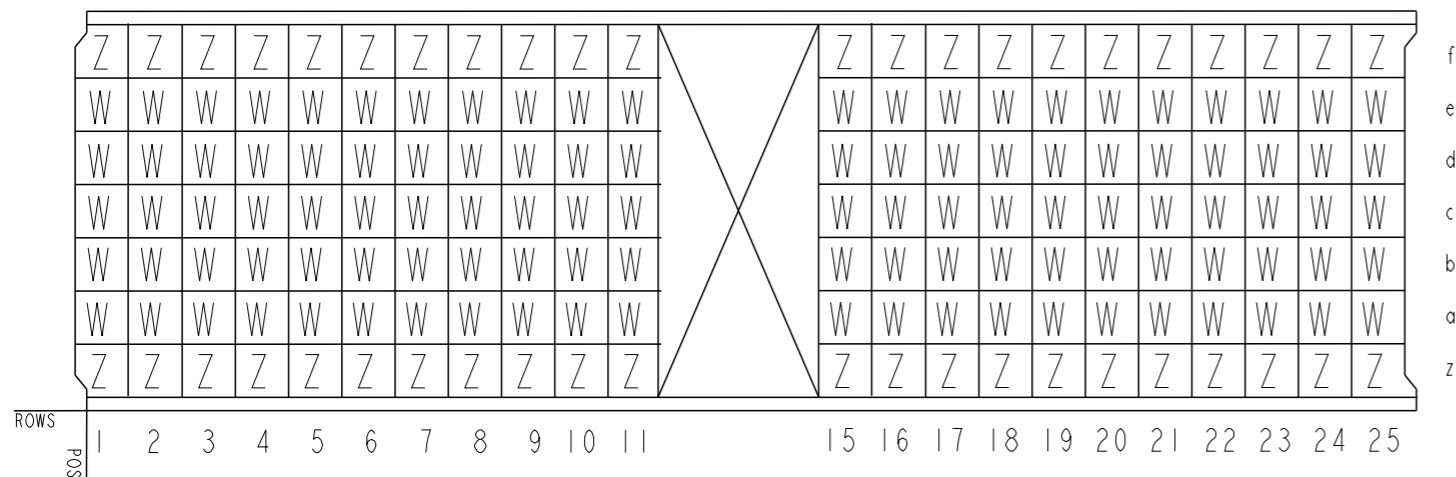
Cat No : HM2P40SZE121-----



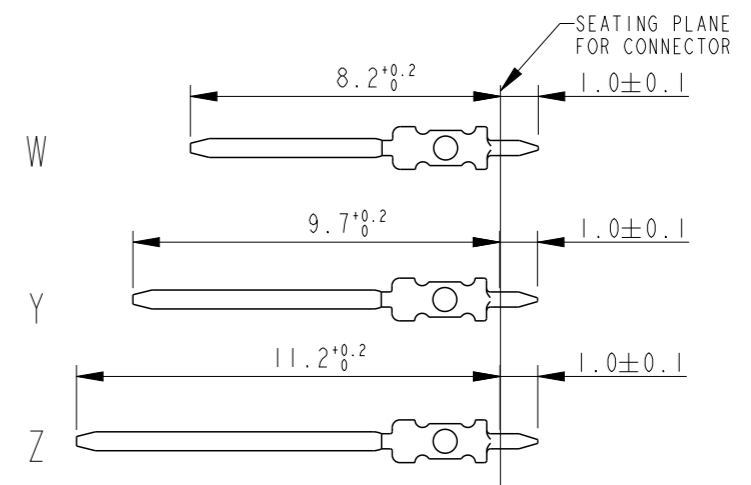
Cat No : HM2P40SZ5110-----



Cat No : HM2P40SZ5111-----



CONTACT OVERVIEW



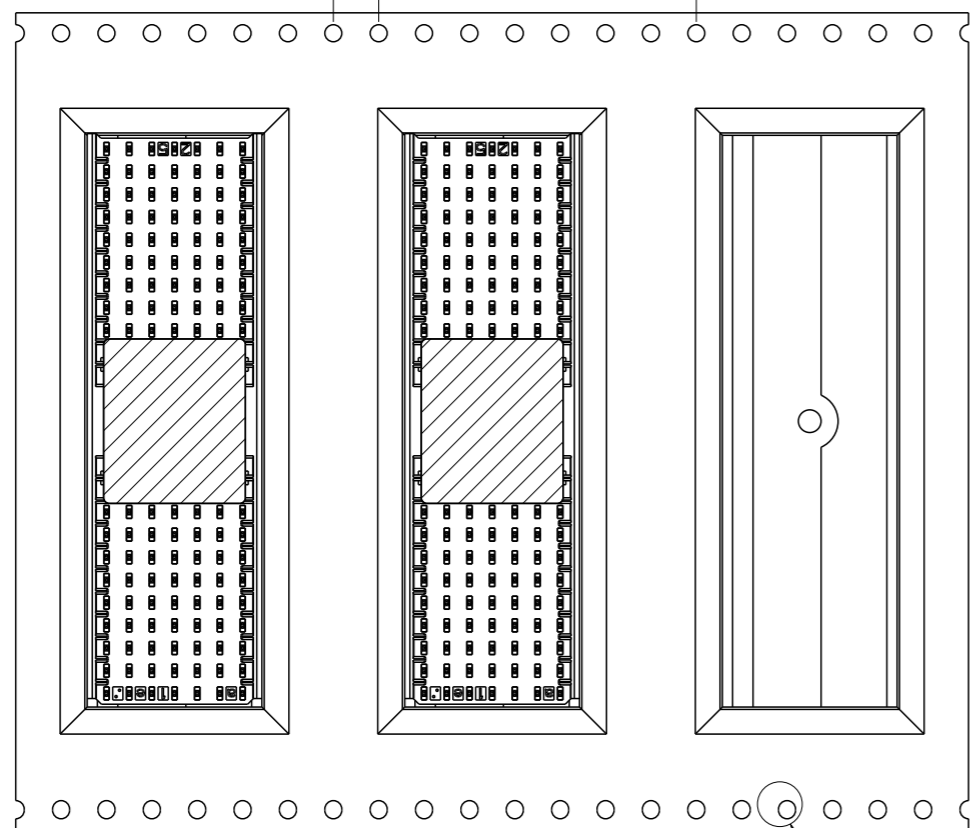
www.fciconnect.com		surface - ✓ ISO 1302	tolerance std ISO 406 ISO 1101	projection ⊕	mm
TOLERANCES UNLESS OTHERWISE SPECIFIED					
Dr	Alex Babu	2010-05-10	ANGULAR	0.X	±0.2
Eng	Alex Babu	2010-05-10	LINEAR	0.XX	±0.1
Chr	Biju K Paul	2010-05-10	0° ±1°	0.XXX	±0.05
Appr	Biju K Paul	2010-05-10	Product family	MILLIPACS	Spec ref -
MILLIPACS TYPE-ANP STR HDR			dwg no BSC203204005		Rev. A
PIP VERSION			CUSTOMER DRAWING		sheet 2 of 3
catalog no HM2P40SZ-----					

FCI
Copyright FCI.

TAPE ON REEL PACKAGING DETAILS

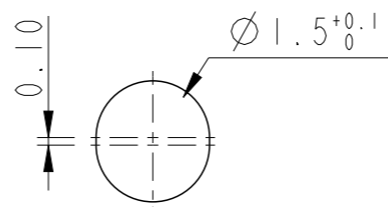
Reel Off Direction 

Pitch = 4.0 Pitch = 28.0

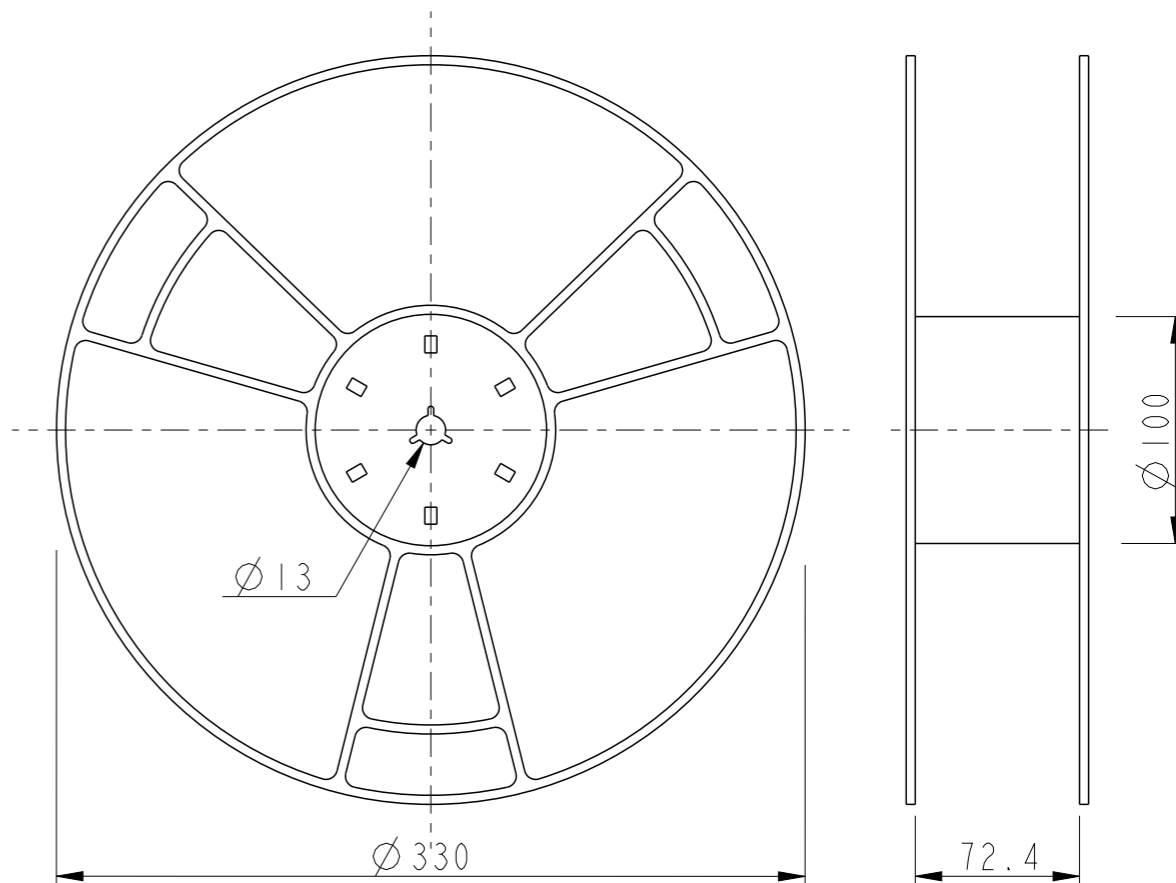
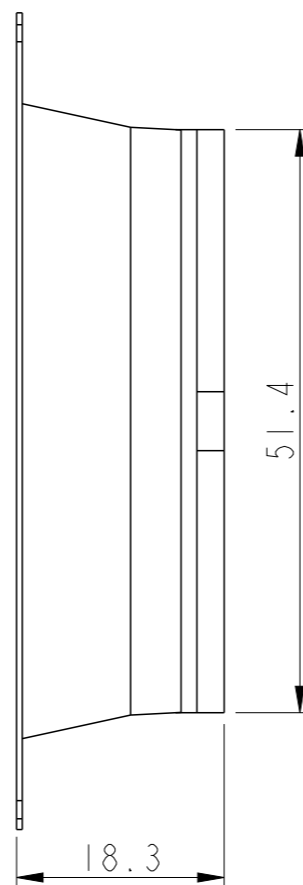


SCALE 3:2

SEE DETAIL B



DETAIL B
SCALE 10:1

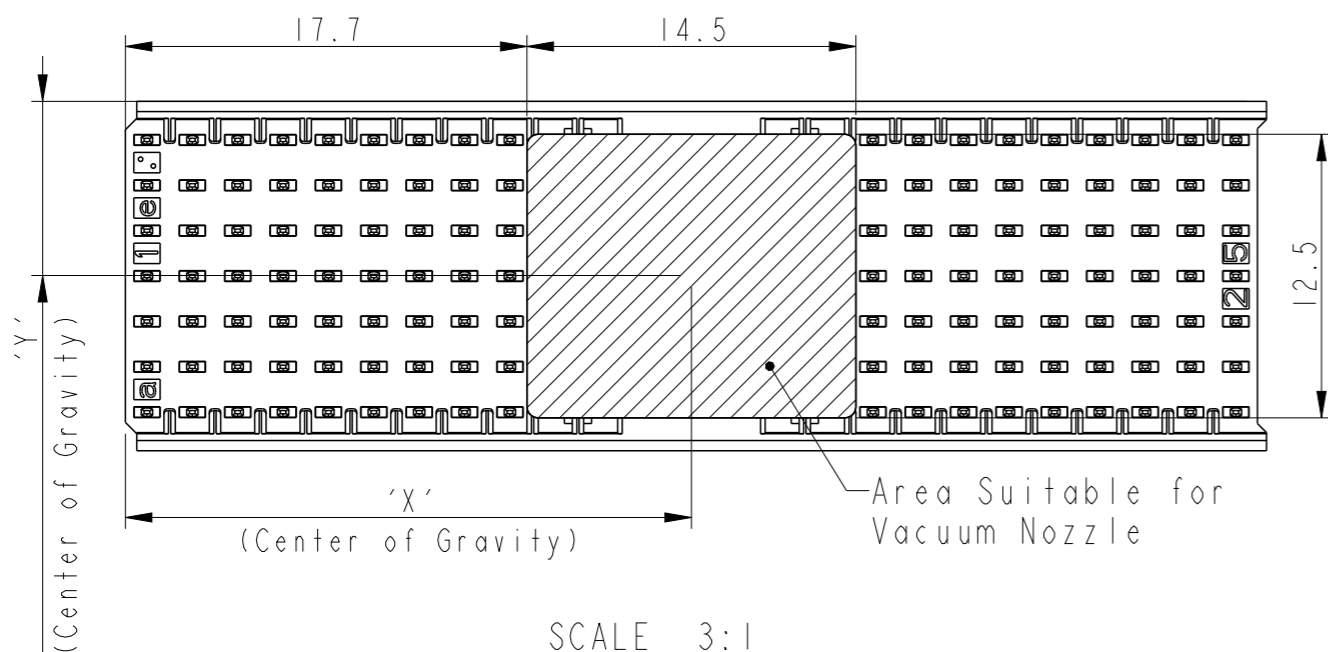


SCALE 3:10

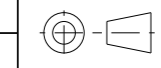

NOTES :

- 1 , CONNECTORS PACKED PER REEL : 110 PIECES
- 2 , PACKAGING DETAILS AS PER EIA-481-B
- 3 , PACKING SHOULD BE ANTISTATIC
- 4 , MATERIAL
CARRIER TAPE : POLYSTYRENE
COVER TAPE : POLYESTER
- 5 , CONNECTOR CAN BE PICKED UP WITH A VACUUM NOZZLE
DIAMETER UPTO 7 MM

Catalogue No.	Center of Gravity		Weight gms
	'X' mm	'Y' mm	
HM2P40SZE121----	25.0	7.7	8.5
HM2P40SZ5110----	25.0	7.7	7.1
HM2P40SZ5111----	25.0	7.7	8.2



SCALE 3:1

www.fciconnect.com		surface - ✓ ISO 1302	tolerance std ISO 406 ISO 1101	projection 	mm ←→
TOLERANCES UNLESS OTHERWISE SPECIFIED					
Dr	Alex Babu	2010-05-10	ANGULAR	0.X ±0.2	size A3 Scale 1:1
Eng	Alex Babu	2010-05-10	LINEAR	0.XX ±0.1	
Chr	Biju K Paul	2010-05-10	0° ±1°	0.XXX ±0.05	ECN 110-0110
Appr	Biju K Paul	2010-05-10	Product family	MILLIPACS	Spec ref -
		MILLIPACS TYPE-ANP STR HDR		dwg no BSC203204005	Rev. A
PIP VERSION		catalog no HM2P40SZ-----		CUSTOMER DRAWING	sheet 3 of 3