

| PART NUMBER | REV | TERMINATOR | FEED TYPE | DESCRIPTION |
|-------------|-----|------------|----------------|--------------------|
| 1426633-1 | A | LEADMAKER | MECH POST FEED | CUTS CARRIER |
| 1426633-2 | A | BENCH | MECH PRE FEED | CUTS CARRIER |
| 1426633-6 | A | LEADMAKER | MECH POST FEED | CONTINUOUS CARRIER |
| 7-1426633-1 | A | LEADMAKER | MECH POST FEED | -1 AND SPARE PARTS |
| 7-1426633-2 | A | BENCH | MECH PRE FEED | -2 AND SPARE PARTS |
| 7-1426633-6 | A | LEADMAKER | MECH POST FEED | -6 AND SPARE PARTS |
| 7-1426633-7 | A | - | - | SPARE PARTS KIT |

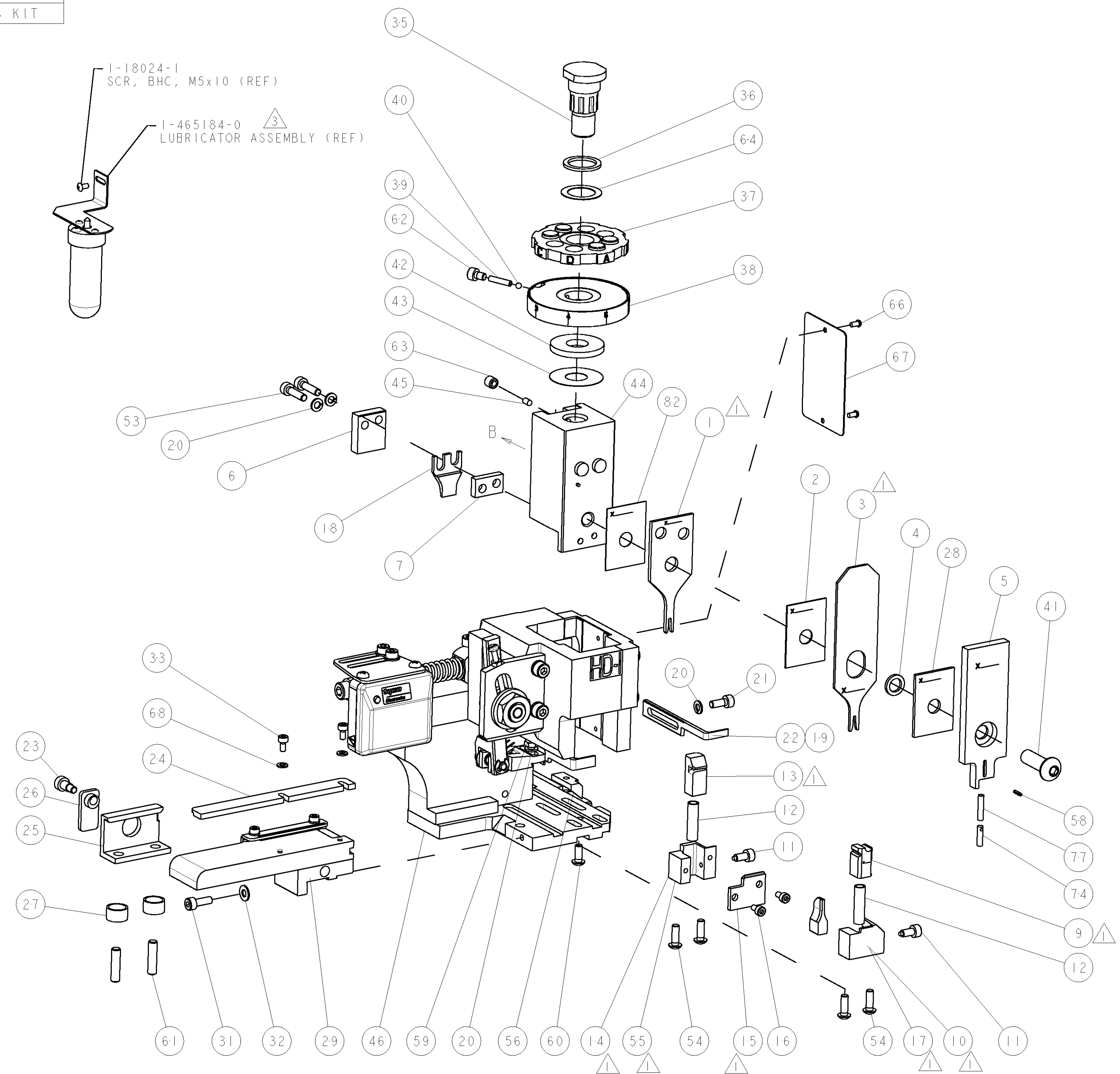
| CRIMP | SIZE | TYPE | RANGE |
|-------|-----------------|------|---------------------------------------|
| WIRE | 1.40 [1.055 IN] | F | 24-22 AWG (0.20-0.35mm ²) |
| INSUL | 1.57 [1.062 IN] | O | 1.40-1.63 [1.055-1.064 IN] |

| WIRE STRIP LENGTH | APPL INSTRUCTIONS |
|--------------------------|-------------------|
| 3.17-3.56 [1.25-.140 IN] | 408-8322 |

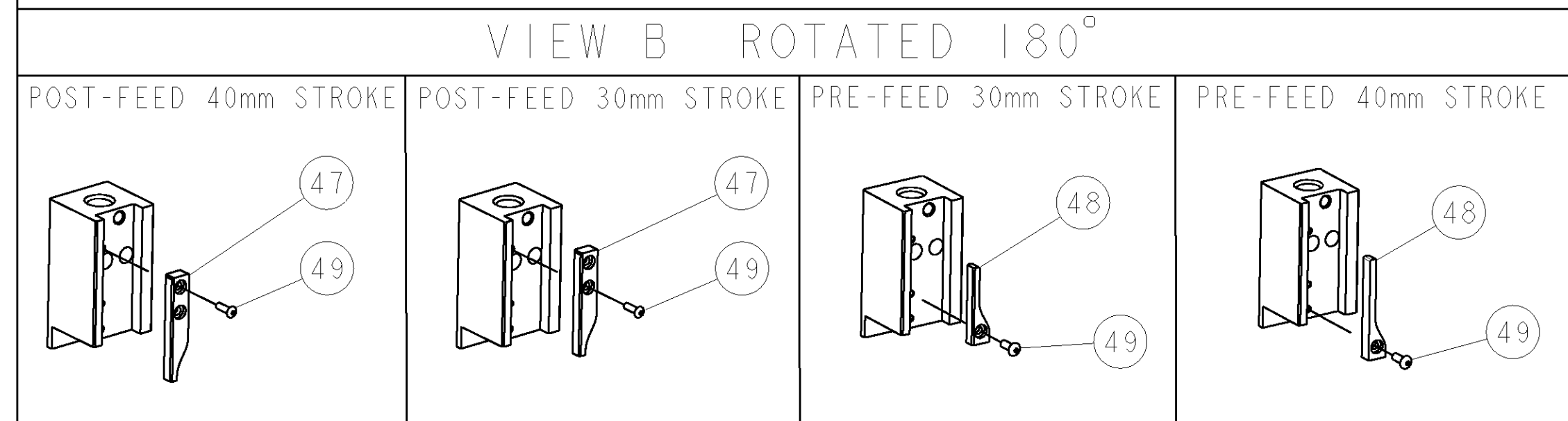
| TERMINAL APPL SPEC | FEED |
|--------------------|----------------|
| 63860-2100 rev B | 5.08 [2.00 IN] |

| TYCO TERM PN | MANUF TERM PN | TYCO TERM PN | MANUF TERM PN |
|--------------|---------------|--------------|---------------|
| 286981-1 | 16-02-0088 | 286981-5 | 16-02-1111 |
| 286981-2 | 16-02-0087 | 286981-6 | 16-02-1110 |
| 286981-3 | 16-02-0086 | 286981-7 | 16-02-0103 |
| 286981-4 | 16-02-1124 | - | - |

| WIRE SIZE | CRIMP HEIGHT | PINPN & LENGTH [IN] |
|-------------------------------|------------------------------|---------------------|
| 22 AWG or 0.35mm ² | 0.84 / 0.89 (.033 / .035 IN) | 354779-6 [3.3020] |
| 24 AWG or 0.20mm ² | 0.76 / 0.81 (.030 / .032 IN) | 1-354779-4 [3.3060] |



- △ RECOMMENDED SPARE PARTS.
- 2. GREASE RAM, CAM, CAM FOLLOWER AND FEED ROD LIGHTLY.
- △ CERTAIN TERMINALS REQUIRE LUBRICATION. REFER TO THE APPLICATOR INSTRUCTION SHEET FOR MORE INFORMATION.
- 4. LUBRICATE DAILY PER THE APPLICATOR INSTRUCTION SHEET SUPPLIED WITH THE APPLICATOR.
- △ CRIMP DATA SUPPLIED BY TERMINAL MANUFACTURER.



| QTY | DESCRIPTION | ITEM NO |
|-----|-----------------------------|---------|
| - | - | 84 |
| - | - | 83 |
| - | 455888-3 SPACER, CRIMPER | 82 |
| - | - | 81 |
| - | - | 80 |
| - | - | 79 |
| - | - | 78 |
| - | 22278-9 SPRING, COMPRESSION | 77 |
| - | - | 76 |
| - | - | 75 |
| - | 854769-4 HOLDER, INS | 74 |
| - | - | 73 |
| - | - | 72 |
| - | - | 71 |
| - | - | 70 |
| - | - | 69 |
| - | - | 68 |
| - | - | 67 |
| - | - | 66 |
| - | - | 65 |
| - | - | 64 |
| - | - | 63 |
| - | - | 62 |
| - | - | 61 |
| - | - | 60 |
| - | - | 59 |
| - | - | 58 |
| - | - | 57 |
| - | - | 56 |
| - | - | 55 |
| - | - | 54 |
| - | - | 53 |
| - | - | 52 |
| - | - | 51 |
| - | - | 50 |
| - | - | 49 |
| - | - | 48 |
| - | - | 47 |
| - | - | 46 |
| - | - | 45 |
| - | - | 44 |
| - | - | 43 |
| - | - | 42 |
| - | - | 41 |
| - | - | 40 |
| - | - | 39 |
| - | - | 38 |
| - | - | 37 |
| - | - | 36 |
| - | - | 35 |
| - | - | 34 |
| - | - | 33 |
| - | - | 32 |
| - | - | 31 |
| - | - | 30 |
| - | - | 29 |
| - | - | 28 |
| - | - | 27 |
| - | - | 26 |
| - | - | 25 |
| - | - | 24 |
| - | - | 23 |
| - | - | 22 |
| - | - | 21 |
| - | - | 20 |
| - | - | 19 |
| - | - | 18 |
| - | - | 17 |
| - | - | 16 |
| - | - | 15 |
| - | - | 14 |
| - | - | 13 |
| - | - | 12 |
| - | - | 11 |
| - | - | 10 |
| - | - | 9 |
| - | - | 8 |
| - | - | 7 |
| - | - | 6 |
| - | - | 5 |
| - | - | 4 |
| - | - | 3 |
| - | - | 2 |
| - | - | 1 |

| SET UP GAGE 458637-3 | | LOC | DIST | REVISIONS | | | |
|----------------------|-----------|-----|------|-------------------|------|----|------|
| REV | DATE | BY | CHK | DESCRIPTION | DATE | BY | APPR |
| A | 22FEB2007 | | | SEE ECO-07-004237 | | | |

| QTY | DESCRIPTION | ITEM NO |
|-----|---|---------|
| - | - | 73 |
| - | - | 72 |
| - | 1338705-1 DOCUMENTATION PACKAGE | 71 |
| - | - | 70 |
| - | - | 69 |
| - | 2 2 2 2 2 2 18025-1 WASHER, SPRG LOCK, REG M3 | 68 |
| - | 1 1 1 1 1 1 461264-1 PLATE, IDENTIFICATION | 67 |
| - | 2 2 2 2 2 2 21017-2 SCREW, DRIVE | 66 |
| - | - | 65 |
| - | 1 1 1 1 1 1 986950-1 WASHER, FLAT PRECISION | 64 |
| - | 1 1 1 1 1 1 3-18031-0 SCR, SET, CUP POINT M6 X 6.0 | 63 |
| - | 1 1 1 1 1 1 18023-9 SCR, SKT HD CAP M4 X 6.0 | 62 |
| - | 2 2 2 2 2 2 2-18032-5 SCR, SET, FLT POINT M5 X 20.0 | 61 |
| - | 1 1 1 1 1 1 18024-7 SCR, BTN SKT HD CAP (M4 X 10.0) | 60 |
| - | 1 1 1 1 1 1 5-18022-2 SCR, HEX HD CAP M4 X 8.0 | 59 |
| - | 1 1 1 1 1 1 21028-2 PIN, SLOTTED SPRING .062 X .250 | 58 |
| - | - | 57 |
| - | 1 1 1 1 1 1 1338683-1 FEED PAWL | 56 |
| - | 1 1 1 1 1 1 1338723-1 HOLDER, SHEAR, REAR [NO CUT] | 55 |
| - | 4 4 4 4 4 4 18024-8 SCR, BTN SKT HD CAP (M4 X 12.0) | 54 |
| - | 2 2 2 2 2 2 1-18023-3 SCR, SKT HD CAP M4 X 16.0 | 53 |
| - | - | 52 |
| - | - | 51 |
| - | - | 50 |
| - | 1 1 1 1 1 1 18024-3 SCR, BTN SKT HD CAP (M3 X 10.0) | 49 |
| - | 1 1 1 1 1 1 1338675-1 CAM, UNIVERSAL PRE FEED | 48 |
| - | 1 1 1 1 1 1 1338676-1 CAM, UNIVERSAL POST-FEED | 47 |
| - | 1 1 1 1 1 1 1320999-3 APPLICATOR SUBASSEMBLY, HDI | 46 |
| - | 1 1 1 1 1 1 690191-1 PLUG, NYLON | 45 |
| - | 1 1 1 1 1 1 1338660-1 RAM | 44 |
| - | 1 1 1 1 1 1 690125-1 SHIM SUB-ASSY | 43 |
| - | 1 1 1 1 1 1 690124-4 WASHER, RAM (.135) | 42 |
| - | 1 1 1 1 1 1 2-18024-6 SCR, BTN SKT HD CAP (M8 X 25.0) | 41 |
| - | 1 1 1 1 1 1 23241-1 BALL, STEEL | 40 |
| - | 1 1 1 1 1 1 2-22278-7 SPRING, COMPRESSION | 39 |
| - | 1 1 1 1 1 1 1320922-1 DISC, ADJUST, INSULATION CRIMP | 38 |
| - | 1 1 1 1 1 1 354777-1 WIRE DISC, ASSEMBLY | 37 |
| - | 1 1 1 1 1 1 22480-5 SPRING, COMPRESSION | 36 |
| - | 1 1 1 1 1 1 690212-1 POST, RAM | 35 |
| - | - | 34 |
| - | 2 2 2 2 2 2 18023-2 SCR, SKT HD CAP M3 X 6.0 | 33 |
| - | 1 1 1 1 1 1 18027-2 WASHER, FLAT, REG M4 | 32 |
| - | 1 1 1 1 1 1 1-18023-2 SCR, SKT HD CAP M4 X 12.0 | 31 |
| - | - | 30 |
| - | 1 1 1 1 1 1 1633082-1 STRIP GUIDE ASSEMBLY | 29 |
| - | 1 1 1 1 1 1 1-455888-5 SPACER, CRIMPER | 28 |
| - | 2 2 2 2 2 2 1-22284-0 SPRING, COMPRESSION | 27 |
| - | 1 1 1 1 1 1 356835-1 LEVER, DRAG RELEASE | 26 |
| - | 1 1 1 1 1 1 240792-1 DRAG, TERMINAL | 25 |
| - | 1 1 1 1 1 1 189124-7 GUIDE, FRONT STRIP | 24 |
| - | 1 1 1 1 1 1 980371-4 SCR, SKT HD SHLDR 5.0 DIA X 6.0 | 23 |
| - | 1 1 1 1 1 1 690472-6 STRIPPER | 22 |
| - | 1 1 1 1 1 1 1-18023-1 SCR, SKT HD CAP M4 X 10.0 | 21 |
| - | 4 4 4 4 4 4 18025-2 WASHER, SPRG LOCK, REG M4 | 20 |
| - | 1 1 1 1 1 1 690472-5 STRIPPER | 19 |
| - | 1 1 1 1 1 1 2-690518-4 HOLD DOWN, TERMINAL | 18 |
| - | 1 1 1 1 1 1 1338684-1 SHEAR HOLDER, FRONT | 17 |
| - | 2 2 2 2 2 2 18023-2 SCR, SKT HD CAP M3 X 6.0 | 16 |
| - | 1 1 1 1 1 1 1-690691-1 PLATE, REAR SHEAR | 15 |
| - | 1 1 1 1 1 1 1320920-1 SHEAR HOLDER, REAR [CUTTING] | 14 |
| - | 1 1 1 1 1 1 690463-1 FLOATING SHEAR, REAR | 13 |
| - | 2 2 2 2 2 2 3-22280-3 SPRING, COMPRESSION | 12 |
| - | 2 2 2 2 2 2 356885-4 STOP, SHEAR | 11 |
| - | 1 1 1 1 1 1 1320921-1 SHEAR HOLDER, FRONT, CUT | 10 |
| - | 1 1 1 1 1 1 462006-1 FLOATING SHEAR, FRONT | 9 |
| - | 1 2 2 2 1 1 3-1633139-3 ANVIL, COMBINATION | 8 |
| - | 1 1 1 1 1 1 240641-4 SPACER | 7 |
| - | 1 1 1 1 1 1 690468-2 DEPRESSOR SHEAR, REAR | 6 |
| - | 1 1 1 1 1 1 854772-9 DEPRESSOR, SHEAR | 5 |
| - | 1 1 1 1 1 1 2-238011-5 BLOCK, CRIMPER SPACER | 4 |
| - | 1 2 2 2 1 1 4-683454-6 CRIMPER, INSULATION O | 3 |
| - | 1 1 1 1 1 1 455888-6 SPACER, CRIMPER | 2 |
| - | 1 2 2 2 1 1 5-456402-4 CRIMPER, WIRE PREMIUM | 1 |

| QTY | DESCRIPTION | ITEM NO | | | | | | | |
|-----|-------------|---------|-----|----|----|----|---------|-------------|---------|
| -77 | -76 | -72 | -71 | -6 | -2 | -1 | PART NO | DESCRIPTION | ITEM NO |
| - | - | - | - | - | - | - | - | - | - |

| QTY | DESCRIPTION | ITEM NO |
|-----|-----------------------------|---------|
| - | - | 84 |
| - | - | 83 |
| - | 455888-3 SPACER, CRIMPER | 82 |
| - | - | 81 |
| - | - | 80 |
| - | - | 79 |
| - | - | 78 |
| - | 22278-9 SPRING, COMPRESSION | 77 |
| - | - | 76 |
| - | - | 75 |
| - | 854769-4 HOLDER, INS | 74 |
| - | - | 73 |
| - | - | 72 |
| - | - | 71 |
| - | - | 70 |
| - | - | 69 |
| - | - | 68 |
| - | - | 67 |
| - | - | 66 |
| - | - | 65 |
| - | - | 64 |
| - | - | 63 |
| - | - | 62 |
| - | - | 61 |
| - | - | 60 |
| - | - | 59 |
| - | - | 58 |
| - | - | 57 |
| - | - | 56 |
| - | - | 55 |
| - | - | 54 |
| - | - | 53 |
| - | - | 52 |
| - | - | 51 |
| - | - | 50 |
| - | - | 49 |
| - | - | 48 |
| - | - | 47 |
| - | - | 46 |
| - | - | 45 |
| - | - | 44 |
| - | - | 43 |
| - | - | 42 |
| - | - | 41 |
| - | - | 40 |
| - | - | 39 |
| - | - | 38 |
| - | - | 37 |
| - | - | 36 |
| - | - | 35 |
| - | - | 34 |
| - | - | 33 |
| - | - | 32 |
| - | - | 31 |
| - | - | 30 |
| - | - | 29 |
| - | - | 28 |
| - | - | 27 |
| - | - | 26 |
| - | - | 25 |
| - | - | 24 |
| - | - | 23 |
| - | - | 22 |
| - | - | 21 |
| - | - | 20 |
| - | - | 19 |
| - | - | 18 |
| - | - | 17 |
| - | - | 16 |
| - | - | 15 |
| - | - | 14 |
| - | - | 13 |
| - | - | 12 |
| - | - | 11 |
| - | - | 10 |
| - | - | 9 |
| - | - | 8 |
| - | - | 7 |
| - | - | 6 |
| - | - | 5 |
| - | - | 4 |
| - | - | 3 |
| - | - | 2 |
| - | - | 1 |

| DATE | BY | CHK | DESCRIPTION |
|-----------|--------------|-----|---|
| 24JAN2007 | J. LOFTHOUSE | | REVISED TO CHANGE THE POSITIONING OF THE CRIMP POSITION |
| 24JAN2007 | M. CLIFFORD | | REVISED TO CHANGE THE POSITIONING OF THE CRIMP POSITION |

| QTY | DESCRIPTION | ITEM NO |
|-----|-----------------------------|---------|
| - | - | 84 |
| - | - | 83 |
| - | 455888-3 SPACER, CRIMPER | 82 |
| - | - | 81 |
| - | - | 80 |
| - | - | 79 |
| - | - | 78 |
| - | 22278-9 SPRING, COMPRESSION | 77 |
| - | - | 76 |
| - | - | 75 |
| - | 854769-4 HOLDER, INS | 74 |
| - | - | 73 |
| - | - | 72 |
| - | - | 71 |
| - | - | 70 |
| - | - | 69 |
| - | - | 68 |
| - | - | 67 |
| - | - | 66 |
| - | - | 65 |
| - | - | 64 |
| - | - | 63 |
| - | - | 62 |
| - | - | 61 |
| - | - | 60 |
| - | - | 59 |
| - | - | 58 |
| - | - | 57 |
| - | - | 56 |
| - | - | 55 |
| - | - | 54 |
| - | -</ | |