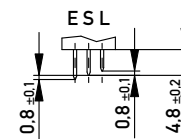


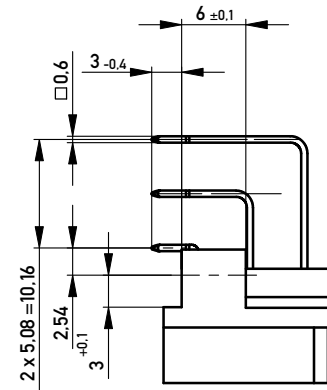
Stecklänge / mating length



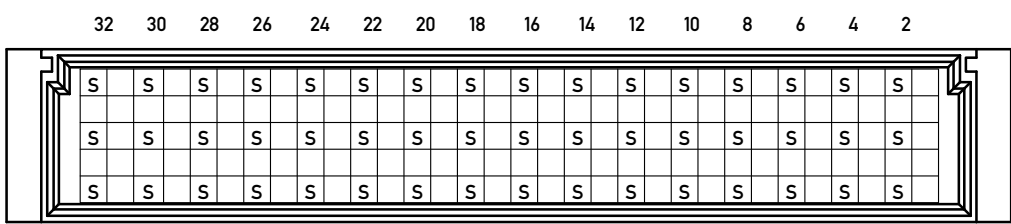
E = early mate, late break / voreilend

S = standard

L = late mate, early break / nacheilend



Bestückungsplan / contact layout



Steckseite ACE / Anschlussseite ACE / contact side ACE / terminal Side ACE

Lötanschluss 0,6 x 0,6 / solder terminal 0,6 x 0,6

Isolierwerkstoff / housing material : PBT GF 30

Bauart 4 / Type 4

Anforderungsstufe 2 = 400 Steckzyklen / performance class 2= 400 mating cycles

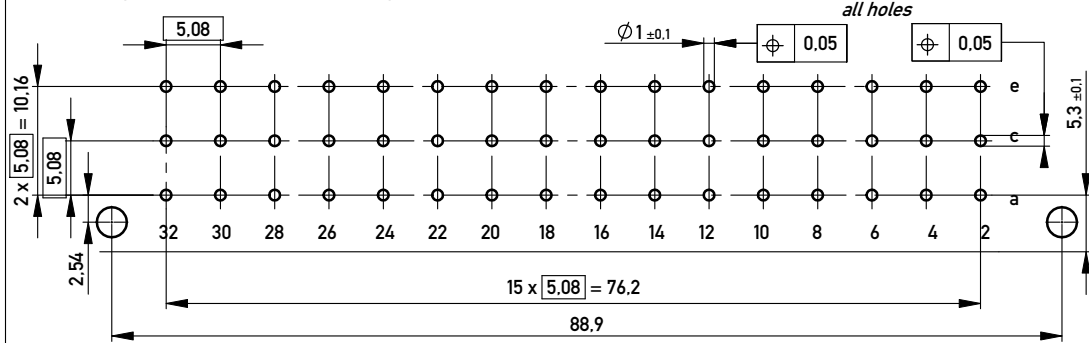
Fehlende Maße und Angaben gemäss IEC 60603-2 / DIN EN 60603-2

Missing information and dimensions according to IEC 60603-2

Bedruckung siehe Zeichnung 294905

Marking see drawing 294905

Leiterplatten-Lochbild / PCB drillhole pattern



Alle Löcher / all holes

Information:		Tolerances	Scale 2:1
All rights reserved. Only for Information. To ensure that this is the latest version of this drawing, please contact one of the ERNI companies before using.		 All Dimensions in mm	Designation
			<b>Messerleiste E48 Löt</b> <b>Male Con. E48 Solder</b>
www.ERNI.com		<b>354872</b>	
A	29.10.2008		
Index	Date		
		Class	STVE

Copyright by ERNI GmbH. Proprietary notice pursuant to ISO 16016 to be observed.