



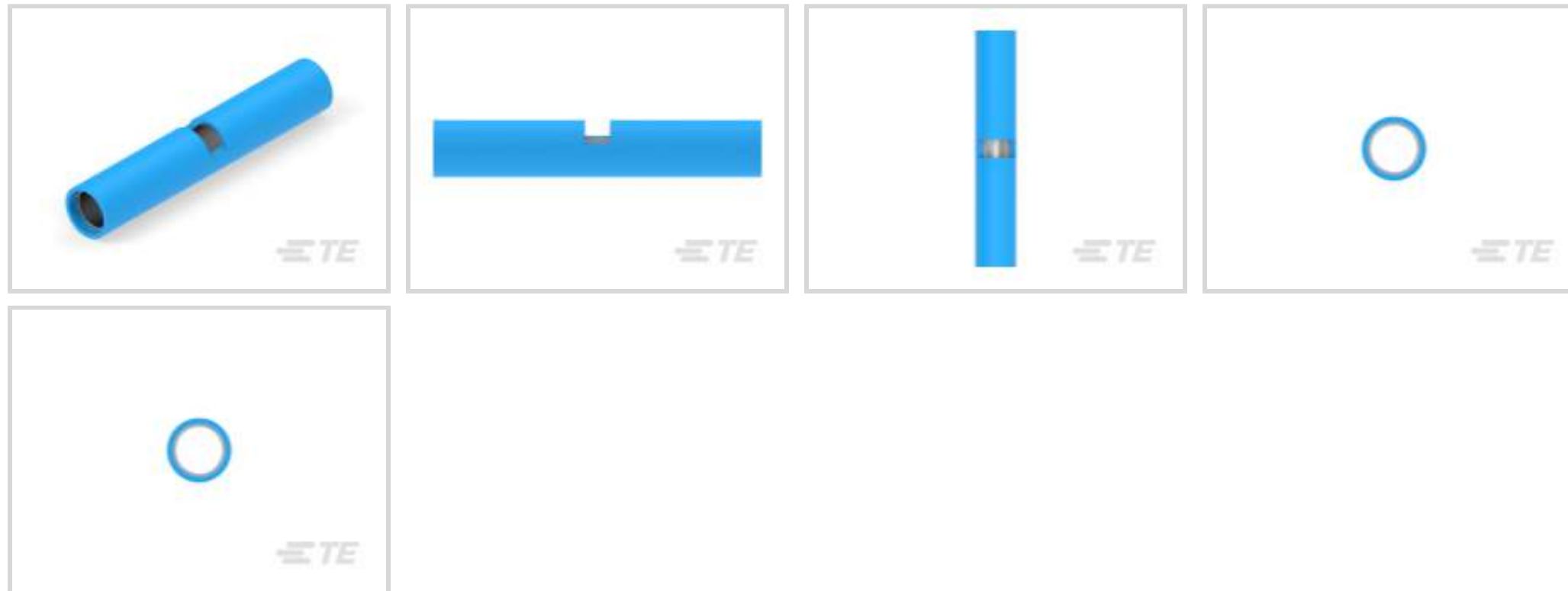
PIDG

TE Internal #: 2-1377174-2

Splices, Butt Splice, 16 – 14 AWG Wire Size, .31 – 2.08 mm² Wire Size, Standard, .153 in [3.89 mm] Barrel Inside Diameter, PIDG

[View on TE.com >](#)

Terminals & Splices > Splices



Wire Size: .31 – 2.08 mm²

Sealable: No

Splice Features: **Standard**

Compatible Insulation Diameter Range: 3.81 mm [.15 in]

Features

Product Type Features

Splice Accessory Type	Splice
Sealable	No
Splice Type	Butt Splice
Compatible With Discrete Wire Type	Stranded
Wire Insulation Support Retention Type	Insulation Support

Configuration Features

Compatible With Wire & Cable Type	Discrete Wire
-----------------------------------	---------------

Electrical Characteristics

Operating Voltage	600 V
-------------------	-------

Body Features

Insulation Type	Pre-Insulated
Product Weight	1.619 g
Insulation Material	Nylon
Splice Features	Standard
Primary Product Color	Blue

Contact Features

Military Part Class	Class I, Class II
Contact Base Material	Copper
Barrel Type	Closed

Termination Features

Termination Method to Wire & Cable	Crimp
------------------------------------	-------

Mechanical Attachment

Wire Insulation Support	Without
-------------------------	---------

Dimensions

Wire Size	2050 – 5180 CMA
Compatible Insulation Diameter Range	3.81 mm[.15 in]
Barrel Inside Diameter	3.89 mm[.153 in]
Product Length	32.13 mm[1.265 in]

Usage Conditions

Insulation Option	Fully Insulated
Operating Temperature Range	105 °C[221 °F]

Operation/Application

Compatible With Wire Base Material	Copper
------------------------------------	--------

Industry Standards

Government Qualified Splice	Yes
-----------------------------	-----

Packaging Features

Packaging Quantity	50
Packaging Method	Loose Piece

Other

Terminals & Splices Comment	Small packaging of 320562.
-----------------------------	----------------------------

Product Compliance

[For compliance documentation, visit the product page on TE.com>](#)

EU RoHS Directive 2011/65/EU	Compliant
EU ELV Directive 2000/53/EC	Compliant
China RoHS 2 Directive MIIT Order No 32, 2016	No Restricted Materials Above Threshold

EU REACH Regulation (EC) No. 1907/2006

Current ECHA Candidate List: JUNE 2023 (235)

Candidate List Declared Against: JUNE 2023 (235)

Does not contain REACH SVHC

Halogen Content

Low Halogen - Br, Cl, F, I < 900 ppm per homogenous material. Also BFR/CFR/PVC Free

Solder Process Capability

Not applicable for solder process capability

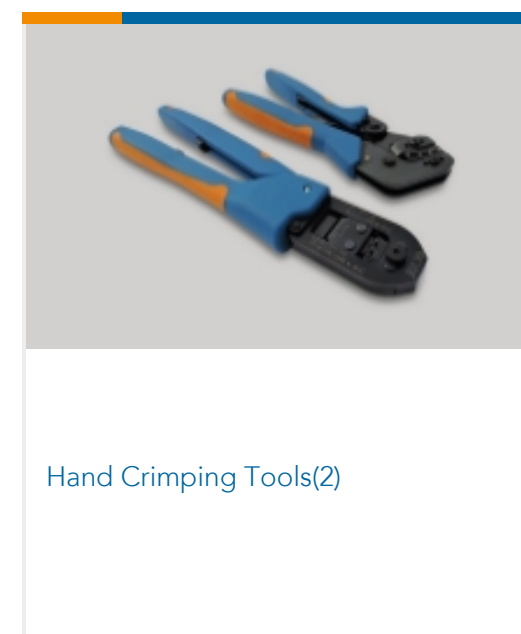
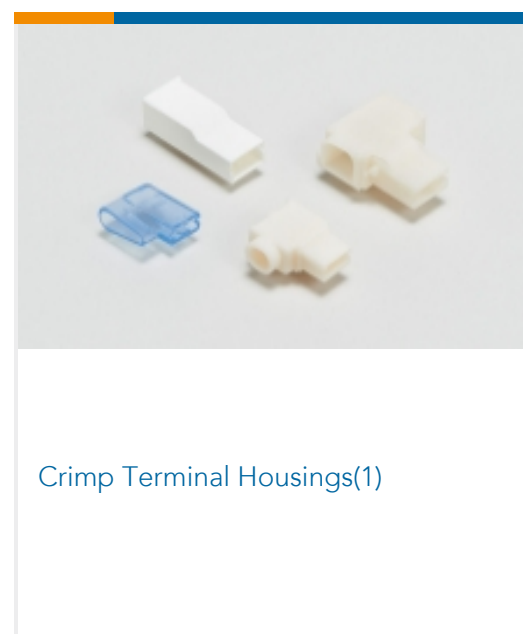
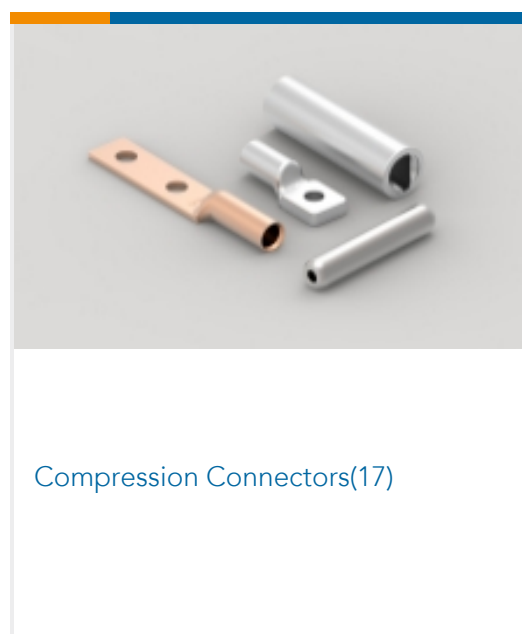
Product Compliance Disclaimer

This information is provided based on reasonable inquiry of our suppliers and represents our current actual knowledge based on the information they provided. This information is subject to change. The part numbers that TE has identified as EU RoHS compliant have a maximum concentration of 0.1% by weight in homogenous materials for lead, hexavalent chromium, mercury, PBB, PBDE, DBP, BBP, DEHP, DIBP, and 0.01% for cadmium, or qualify for an exemption to these limits as defined in the Annexes of Directive 2011/65/EU (RoHS2). Finished electrical and electronic equipment products will be CE marked as required by Directive 2011/65/EU. Components may not be CE marked. Additionally, the part numbers that TE has identified as EU ELV compliant have a maximum concentration of 0.1% by weight in homogenous materials for lead, hexavalent chromium, and mercury, and 0.01% for cadmium, or qualify for an exemption to these limits as defined in the Annexes of Directive 2000/53/EC (ELV). Regarding the REACH Regulation, the information TE provides on SVHC in articles for this part number is based on the latest European Chemicals Agency (ECHA) 'Guidance on requirements for substances in articles' posted at this URL: <https://echa.europa.eu/guidance-documents/guidance-on-reach>

Compatible Parts



Also in the Series | PIDG





Knife Disconnects(11)



PCB Terminals(9)



Quick Disconnects(49)



Ring Terminals & Spade Terminals(861)

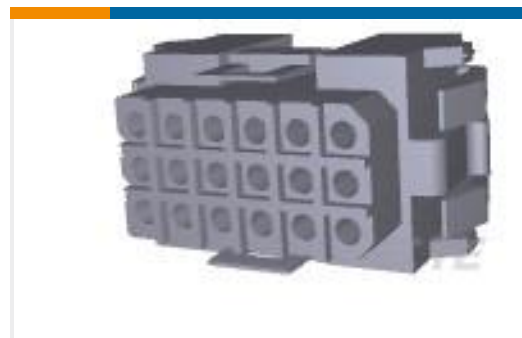


Special Purpose Terminals(1)



Splices(47)

Customers Also Bought



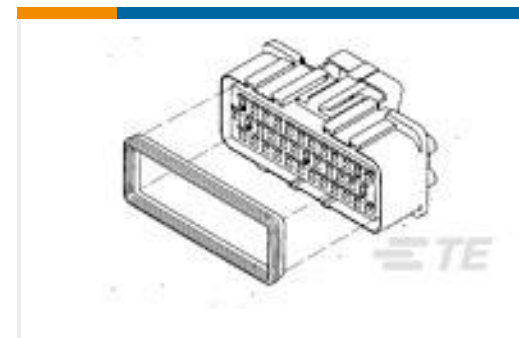
TE Part #207442-1
18 POS SQ GRID METRIMATE-PLUG



TE Part #320559
PIDG Butt Splices



TE Part #HDP24-24-35SE
REC, 35P, BLK, E, 16/20, S



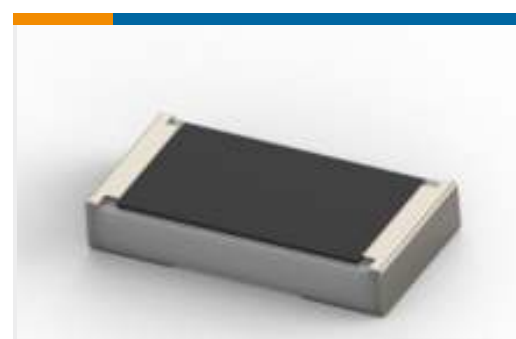
TE Part #346189-5
36 WAY REC HSG ASSY RED 60P P



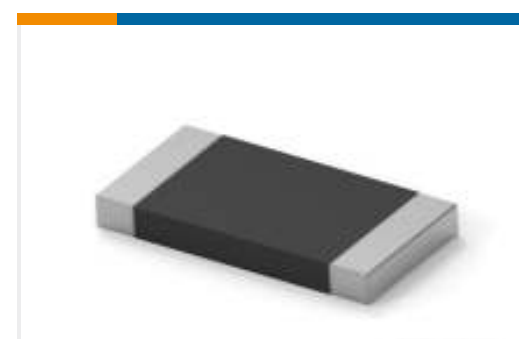
TE Part #DTMH04-2PD
REC, 2P, BLK, N, HI TEMP, D



TE Part #0016072001
DWP-125-1-2-STK



TE Part #2176469-4
TLRP 2010 2.0W R050 1% 75PPM 4K RL



TE Part #4-2176422-6
TLRP 2512 3.0W R200 1% 25PPM 4K RL

Documents

Product Drawings

[SMP 0-0320562-0](#)

English

CAD Files

[3D PDF](#)

[3D](#)

[Customer View Model](#)

[ENG_CVM_CVM_2-1377174-2_C1.2d_dxf.zip](#)



English

Customer View Model

[ENG_CVM_CVM_2-1377174-2_C1.3d_igs.zip](#)

English

Customer View Model

[ENG_CVM_CVM_2-1377174-2_C1.3d_stp.zip](#)

English

By downloading the CAD file I accept and agree to the [Terms and Conditions](#) of use.

Datasheets & Catalog Pages

[RADIATION_RESISTANT_PRE-INSULATED_TERMINALS_SPLICES](#)

English

Product Specifications

[Application Specification](#)

English