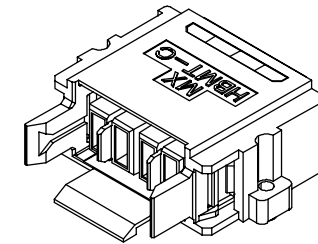
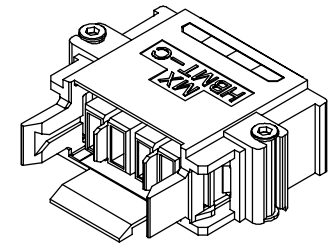


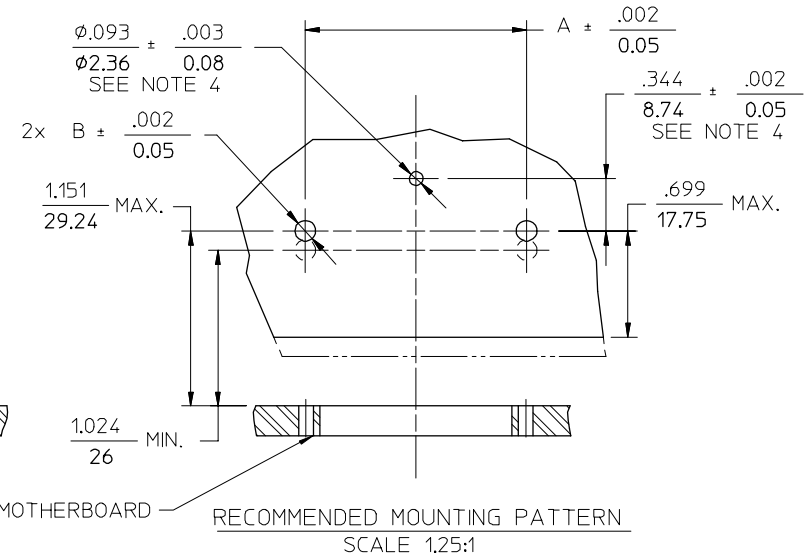
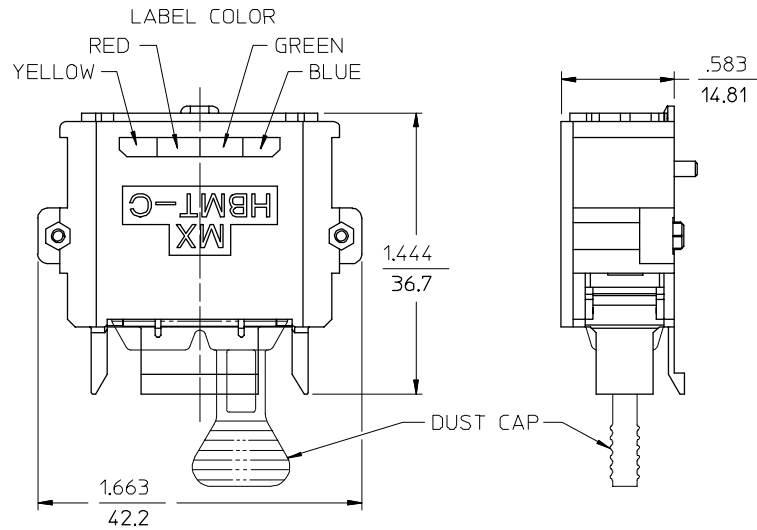
CONNECTOR P/N	MOUNTING	FLOAT	PLATING	A	B	C	MATES WITH MOTHERBOARD ADAPTER P/N
86105-0100	RIVET	NO	NO	1,457 (37)	.135 (3.43)	.275 (6.98)	86105-0000, 86105-1000
86105-1100	SCREW	NO	NO	1,457 (37)	.135 (3.43)	.275 (6.98)	86105-0000, 86105-1000
86105-2100	SCREW	YES	NO	1,497 (38)	.090 (2.29)	.295 (7.49)	86105-0000, 86105-1000, 86105-2000
86105-2300	SCREW	YES	YES	1,497 (38)	.090 (2.29)	.295 (7.49)	86105-2200



ISOMETRIC VIEW
RIVET MOUNTING



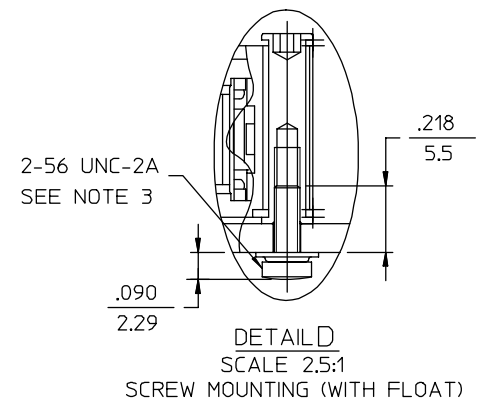
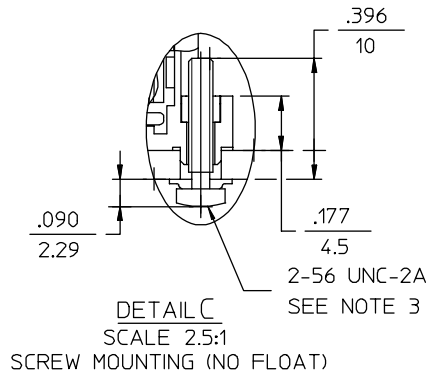
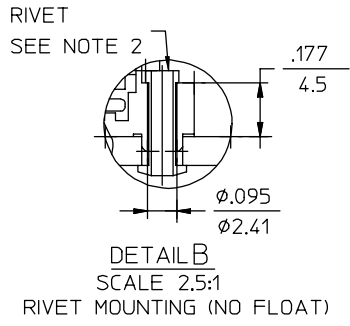
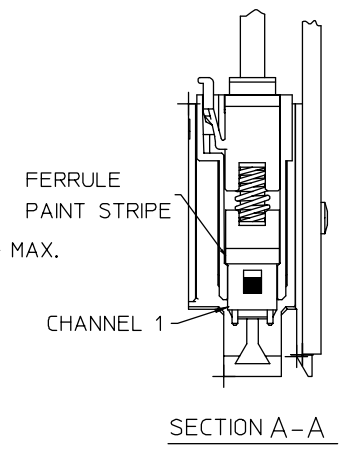
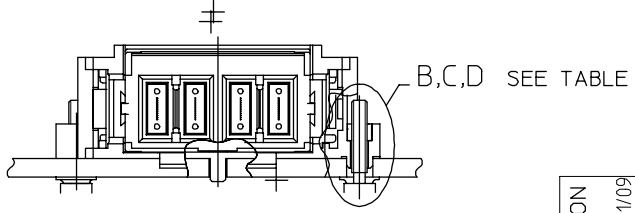
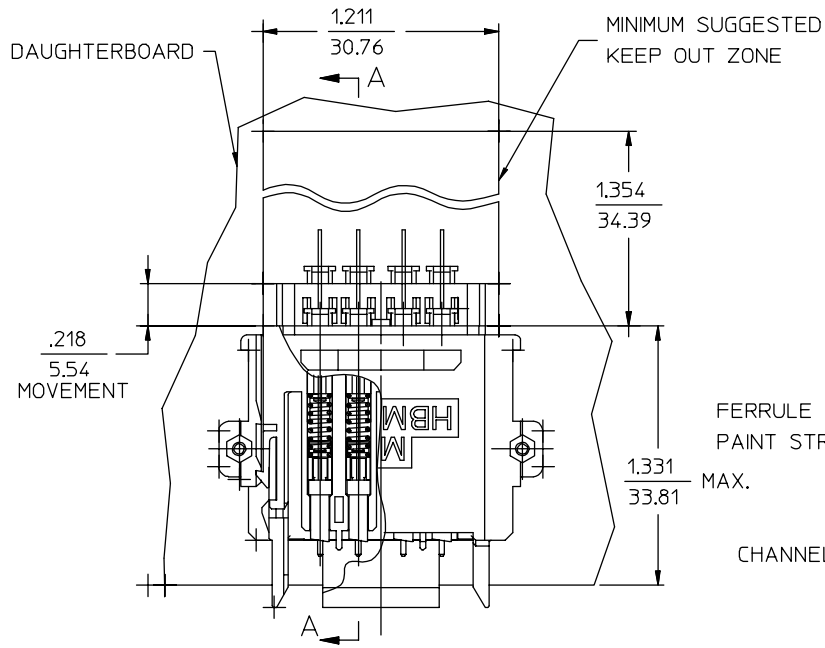
ISOMETRIC VIEW
SCREW MOUNTING WITH FLOAT



NOTES:

- ALL DIMENSIONS ARE GIVEN IN $\frac{\text{INCHES}}{\text{mm}}$ OR INCHES (mm).
- RIVETS NOT INCLUDED WITH CONNECTOR.
- SCREWS ARE INCLUDED WITH CONNECTOR AND ARE INSTALLED BY USER. RECOMMENDED TORQUE: 2.5 TO 4 IN.LBS (0.28 TO 0.45 N.m) DEPENDING ON SUBSTRATE MATERIAL AND SCREW TYPE. USER IS ENCOURAGED TO DETERMINE THE PROPER TORQUE TO USE BY TRIAL (SEE MACHINERY'S HANDBOOK FOR PROCEDURE).
- CENTER LOCATOR HOLE AND PEG NOT USED ON P/Ns 86105-2100, 86105-2300.

ENTER DESCRIPTION EC NO: MF2003-0509 DRWN: WCHEN 2003/01/09 CHKD: 2003/01/10 APPR: SERNST 2003/01/10 REV:	QUALITY SYMBOLS	GENERAL TOLERANCES (UNLESS SPECIFIED)	SCALE 4:1	DESIGN UNITS INCH	THIRD ANGLE PROJECTION	REVISE ON CAD ONLY															
	$\blacktriangledown = 0$ $\triangleleft = 0$	<table border="1"> <thead> <tr> <th></th> <th>mm</th> <th>INCH</th> </tr> </thead> <tbody> <tr> <td>4 PLACES</td> <td>$\pm .005$</td> <td>$\pm .0004$</td> </tr> <tr> <td>3 PLACES</td> <td>$\pm .004$</td> <td>$\pm .0003$</td> </tr> <tr> <td>2 PLACES</td> <td>$\pm .003$</td> <td>$\pm .0002$</td> </tr> <tr> <td>1 PLACE</td> <td>$\pm .002$</td> <td>$\pm .0001$</td> </tr> </tbody> </table>		mm	INCH	4 PLACES	$\pm .005$	$\pm .0004$	3 PLACES	$\pm .004$	$\pm .0003$	2 PLACES	$\pm .003$	$\pm .0002$	1 PLACE	$\pm .002$	$\pm .0001$	DIMENSION STYLE IN/MM	TITLE	HBTM DAUGHTER CARD CONNECTOR	
		mm	INCH																		
	4 PLACES	$\pm .005$	$\pm .0004$																		
3 PLACES	$\pm .004$	$\pm .0003$																			
2 PLACES	$\pm .003$	$\pm .0002$																			
1 PLACE	$\pm .002$	$\pm .0001$																			
DRAFT WHERE APPLICABLE MUST REMAIN WITHIN DIMENSIONS	ANGULAR $\pm 1/2^\circ$	DRAWN BY: _____ DATE: _____ CHECKED BY: _____ DATE: _____ APPROVED BY: _____ DATE: _____	MATERIAL NO. SEE TABLE DOCUMENT NO. 86105-YY00CD SHEET NO. 1 OF 2	MOLEX INCORPORATED																	
			THIS DRAWING CONTAINS INFORMATION THAT IS PROPRIETARY TO MOLEX INCORPORATED AND SHOULD NOT BE USED WITHOUT WRITTEN PERMISSION.																		



ENTER DESCRIPTION EC NO: MF2003-0509 DRWN: WCHEN 2003/01/09 CHKD: 2003/01/10 APPR: SERNST 2003/01/10	QUALITY SYMBOLS ▽ - 0 ▽ - 0	GENERAL TOLERANCES (UNLESS SPECIFIED) mm INCH 4 PLACES ± --- ± --- 3 PLACES ± --- ± --- 2 PLACES ± --- ± --- 1 PLACE ± --- ± --- ANGULAR ±1/2°	SCALE 4:1 DESIGN UNITS INCH DIMENSION STYLE IN/MM	THIRD ANGLE PROJECTION REVISE ON CAD ONLY
	DESCRIPTION ▽ - 0	DRAFT WHERE APPLICABLE MUST REMAIN WITHIN DIMENSIONS	DRAWN BY DATE CHECKED BY DATE APPROVED BY DATE	TITLE HBM DAUGHTER CARD CONNECTOR
	REV	MATERIAL NO. SEE TABLE DOCUMENT NO. 86105-YY00CD SHEET NO. 2 OF 2	THIS DRAWING CONTAINS INFORMATION THAT IS PROPRIETARY TO MOLEX INCORPORATED AND SHOULD NOT BE USED WITHOUT WRITTEN PERMISSION	MOLEX MOLEX INCORPORATED
	D	B	B	B