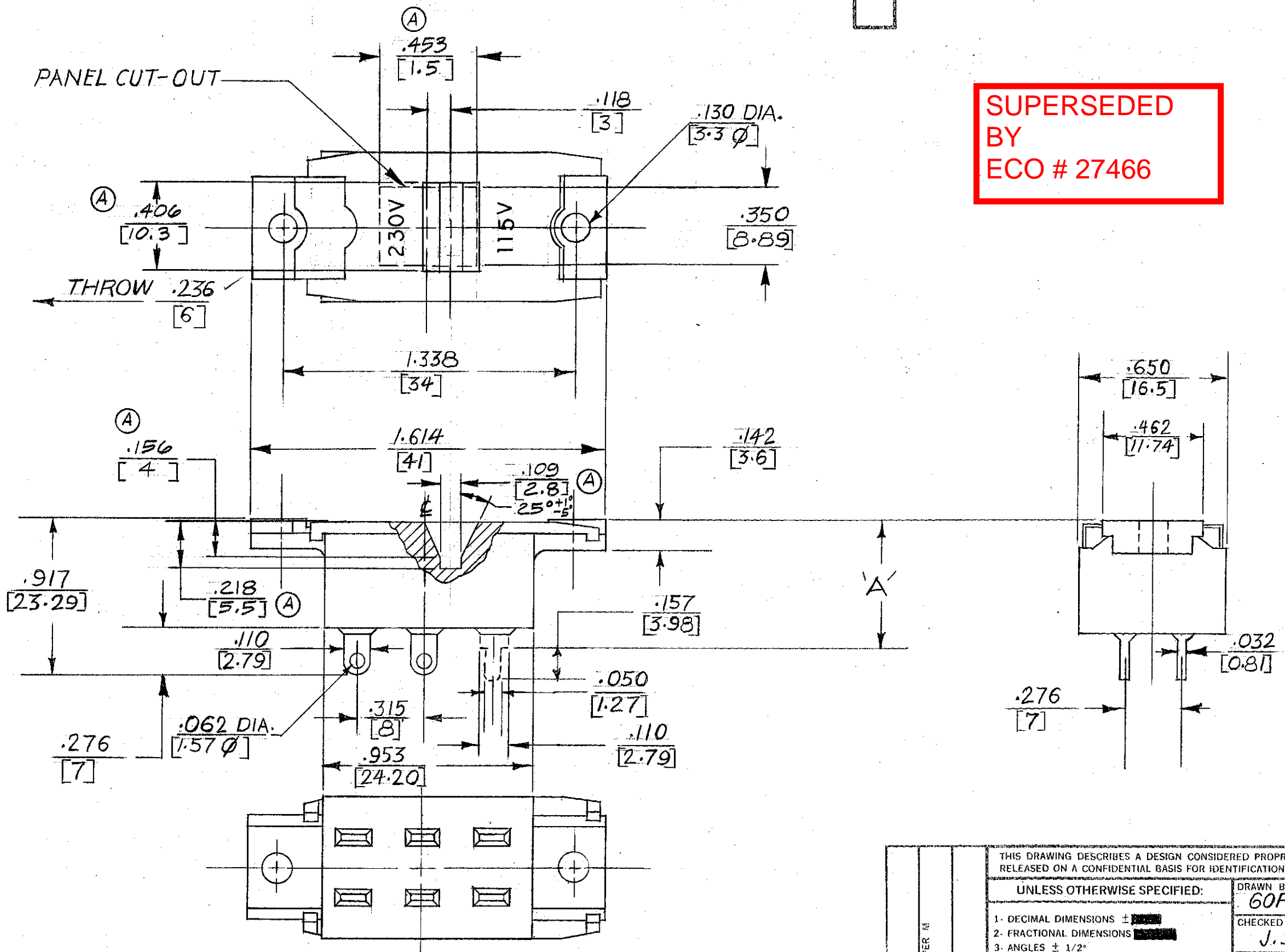


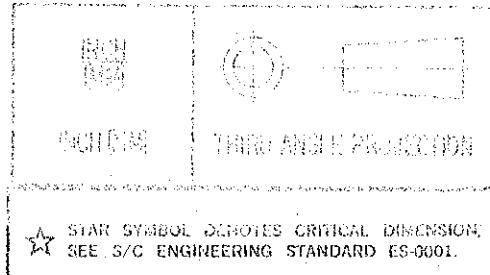
ISS	ZONE	SYM	REVISION	BY	DATE
3			REDRAWN-ADDED REVISED PANEL CUTOUT	G.P.	5-8-79
4		(A)	ECO 10772 REVISED PANEL CUT-OUT & SLOT	RB	12-29 80

SUPERSEDED  
BY  
ECO # 27466



ELECTRICAL RATING: 2A. 250VAC  
CARRY 6A. 250 VAC  
MATERIALS: HOUSING AND TERMINAL BOARD ASSEMBLY: PPS.  
SLIDER BUTTON: NYLON.  
TERMINALS: COPPER ALLOY-SILVER PLATED  
SLIDER CONTACT: BI-METAL-SILVER ON COPPER ALLOY  
DIELECTRIC WITHSTANDING VOLTAGE: 2000 VAC 50/60 Hz, ONE MINUTE BETWEEN ALL TERMINALS.

EPS1-PC3	RIGHT ANGLE PC TERM.
EPS1-PC1	.681 [17.30] 'A' DIM. PC TERM.
EPS1-PC2	.719 [18.26] 'A' DIM PC TERM.
EPS1-SL1	SOLDER LUG
PART NO.	TYPE OF TERMINAL



THIS DRAWING DESCRIBES A DESIGN CONSIDERED PROPRIETARY IN NATURE, DEVELOPED AND MANUFACTURED BY SWITCHCRAFT, INC. AND IS RELEASED ON A CONFIDENTIAL BASIS FOR IDENTIFICATION PURPOSE ONLY.

UNLESS OTHERWISE SPECIFIED:

DRAWN BY GOPAL	DATE 5-8-79	FINISH M
CHECKED BY J.S.	DATE 5-11-79	PER FINISH SPEC. NO.
APPROVED BY	DATE	MATERIAL M
SCALE		PER MAT. SPEC. NO.
FIRST USED ON M		SWITCHCRAFT
NAME SLIDE SWITCH ASSEMBLY (DPDT)	PART NO. EPS1-	ISSUE 4
DO NOT SCALE DRAWING	SHEET 1 OF 1	