



Electrical specifications

Passband: 910-920 MHz
Insertion loss (CF): 1.5 dB
Insertion loss: 3 dB
Return loss: 16 dB
Out of band Rejection 1: 75 dB@850-894 MHz
Out of band Rejection 2: 75 dB@929-950 MHz
Power Handling : 20 Watts

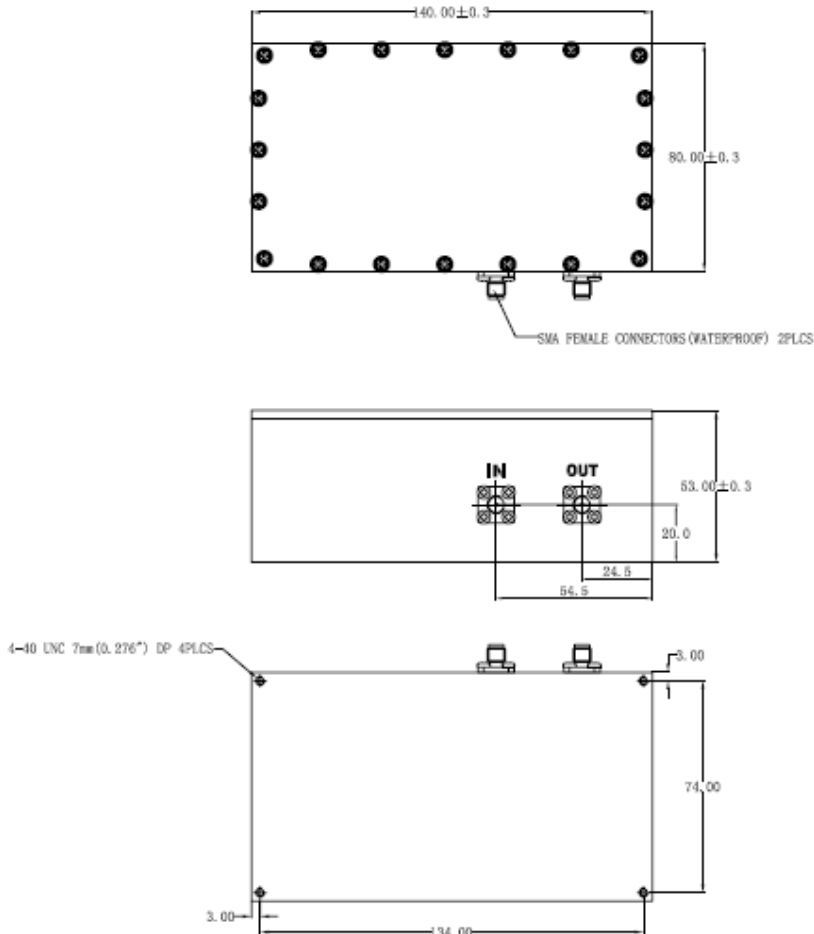
Mechanical

Mounting Method: Threaded Mounting Holes
Connector Type: SMA Female
Dimensions: 140 X 80 X 53 mm

Environmental

Operating Temperature: -45 to +85° C
Storage Temperature: -55 to +95° C
Shock: 20 G. 11ms
Vibration: 20 G. 5 to 200 MHz

Outline Drawing:



Finish: Black epoxy paint



900 MHz Cavity Bandpass Filter

Part Number: AB915B496



Plot:

