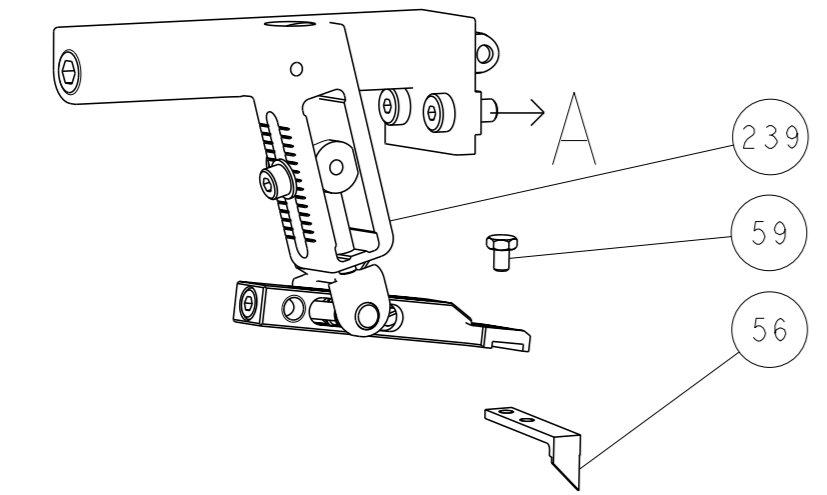
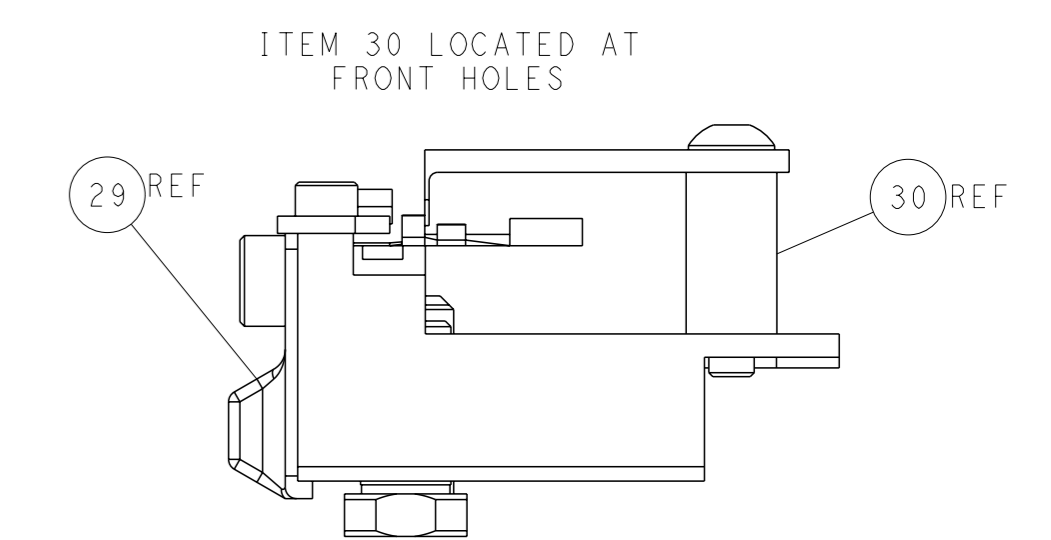
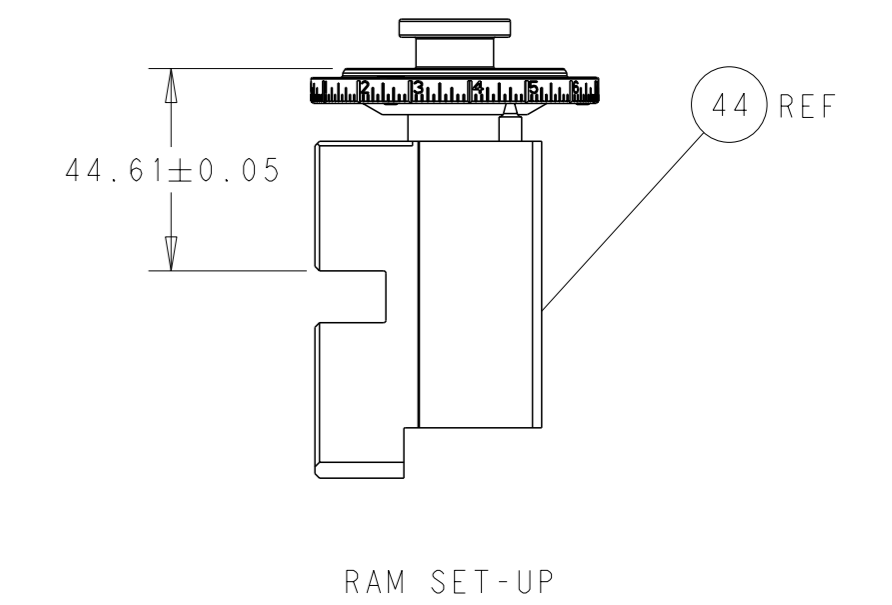
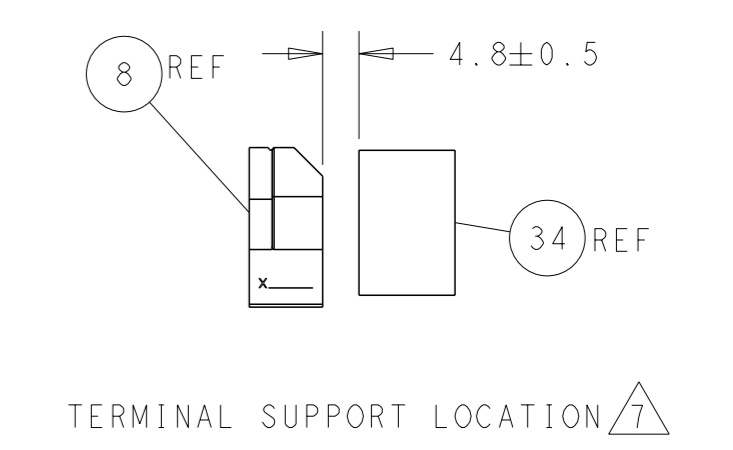
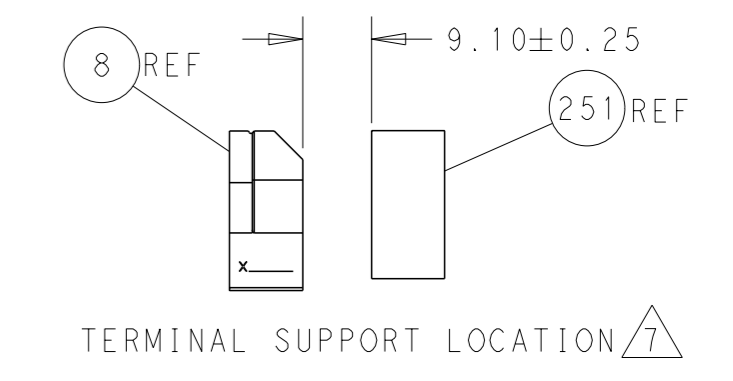
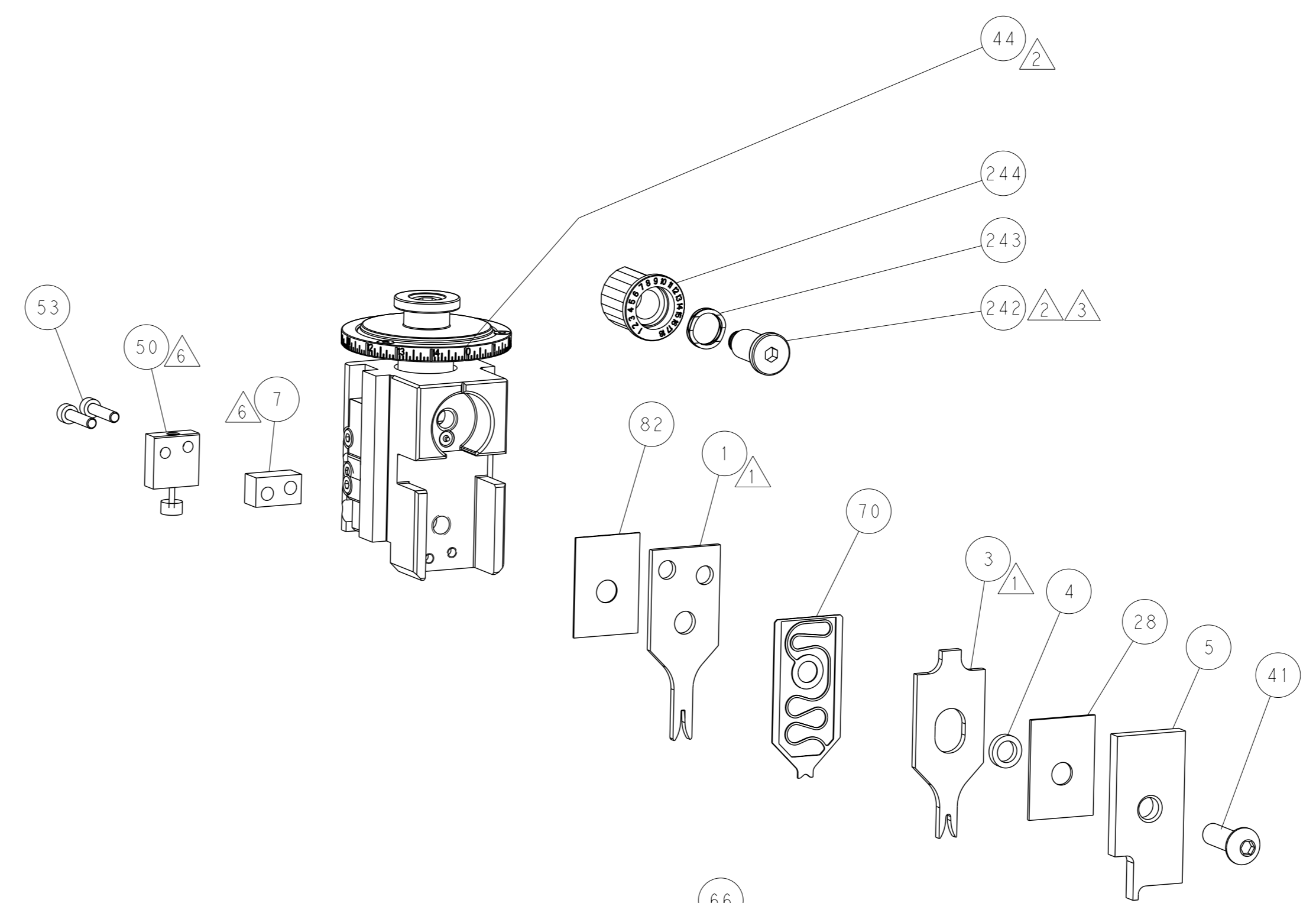
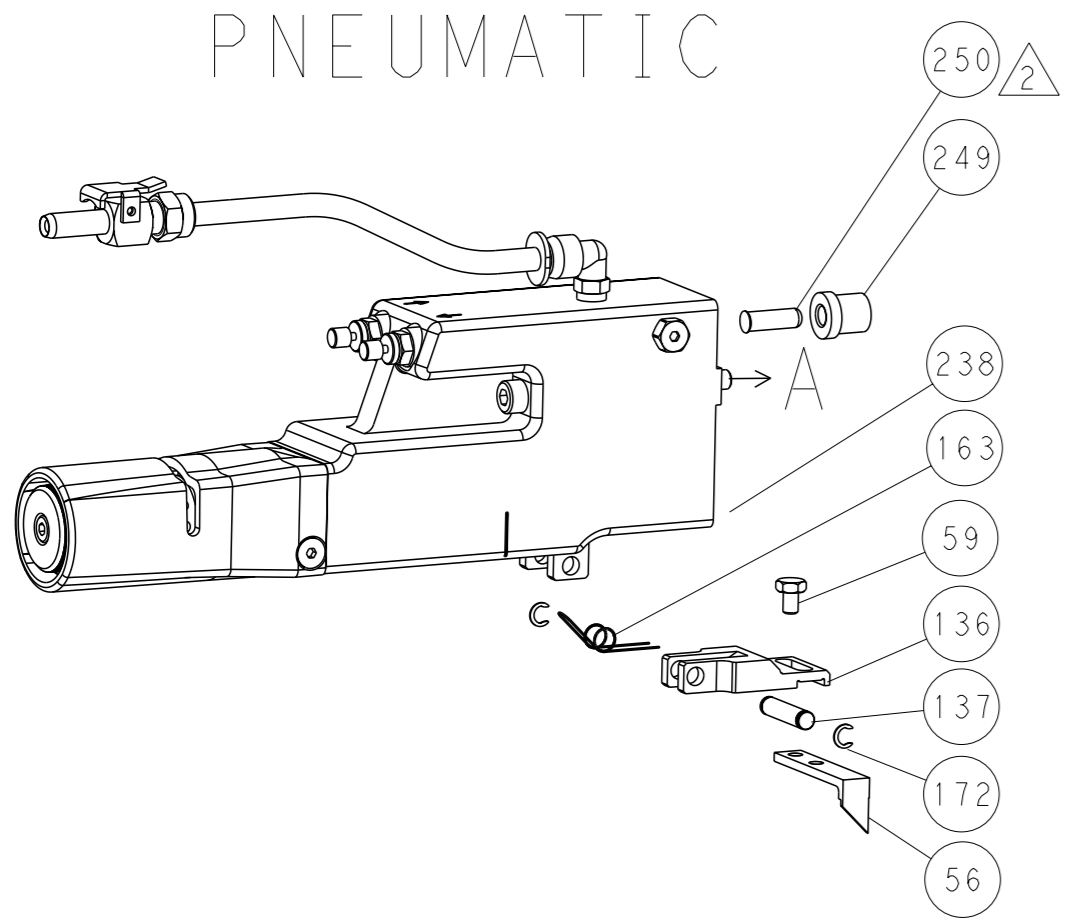


LOC	DIST	REV	DESCRIPTION	DATE	OWN	APVD
A	66		SEE SHEET 1			

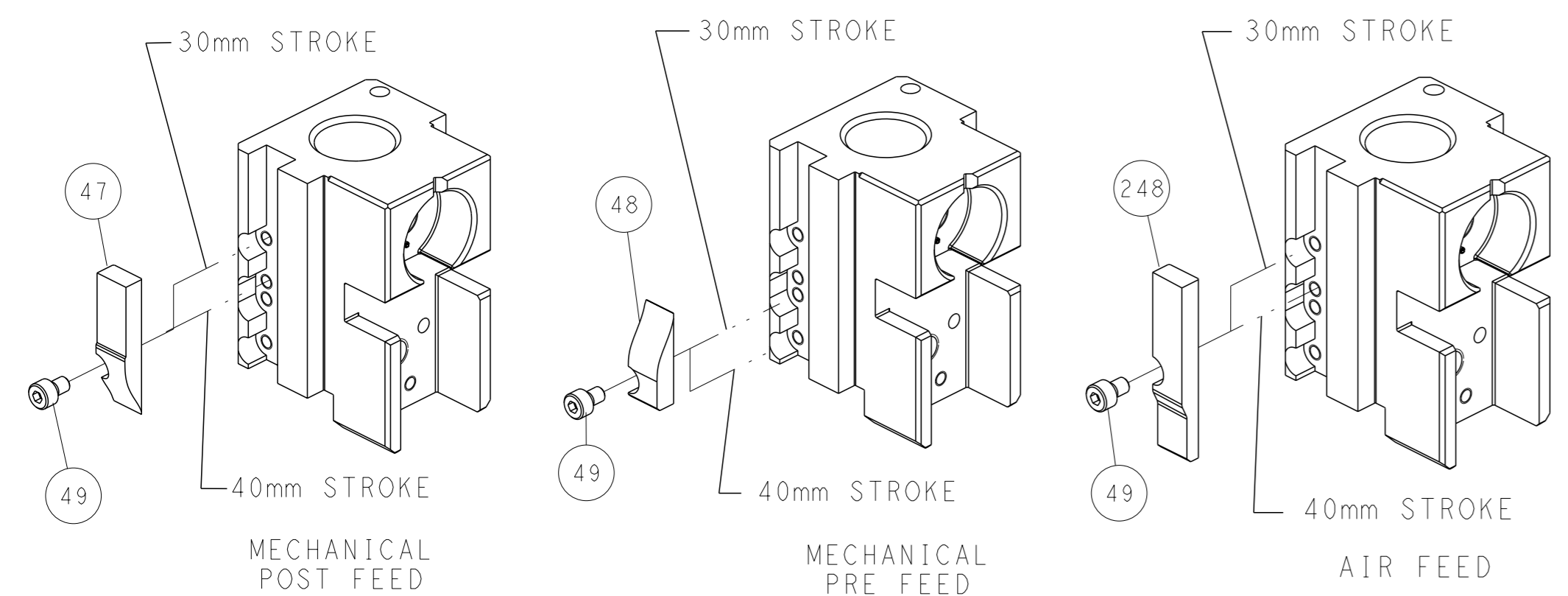
FEED TYPE MECHANICAL



PNEUMATIC



CAM POSITIONS

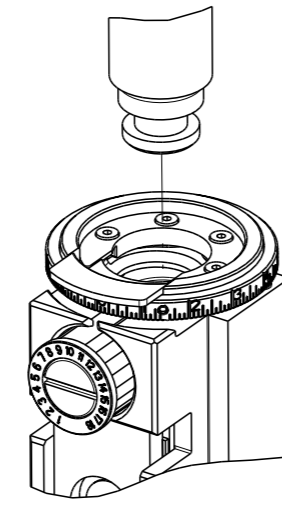


ATLANTIC VERSION
 Shown on sheets 1 of 4 & 2 of 4
 (Pacific version shown on sheets 3 of 4 & 4 of 4)

<small>THIS DRAWING IS A CONTROLLED DOCUMENT FOR TYCO ELECTRONICS CORPORATION. IT IS SUBJECT TO CHANGE AND THE CONTROLLER'S ENGINEERING DEPARTMENT SHOULD BE CONTACTED FOR THE LATEST REVISION.</small>		DWN Y. YIN 30NOV2012 CHK G. BAILEY 30NOV2012 APVD S. XI 30NOV2012	TE Connectivity Harrisburg, PA 17105-3608
DIMENSIONS: mm TOLERANCES UNLESS OTHERWISE SPECIFIED: 0 PLC ± 1 PLC ± 2 PLC ± 3 PLC ± 4 PLC ± ANGLES FINISH *		NAME Ocean Side Feed Applicator SIZE CAGE CODE DRAWING NO. A1 00779 ©=2151252 WEIGHT CUSTOMER DRAWING	RESTRICTED TO SCALE 1:2 SHEET 2 OF 4 REV D

THIS DRAWING IS UNPUBLISHED.	RELEASED FOR PUBLICATION		
COPYRIGHT 20 BY TYCO ELECTRONICS CORPORATION. ALL RIGHTS RESERVED.			
PART NUMBER	REVISION	DESCRIPTION	FEED TYPE
2-2151252-1	D	FINE CRIMP HEIGHT ADJUST	MECHANICAL
2-2151252-2	D	FINE CRIMP HEIGHT ADJUST	PNEUMATIC
7-2151252-7	A	CRIMP TOOLING KIT	-

PACIFIC VERSION TERMINATOR
INTERFACE ADAPTER



APPLICATOR DATA		
CRIMP	SIZE	TYPE
WIRE	1.40 mm [.055]	F
INSUL	2.03 mm [.080]	O
APPLICATOR INSTRUCTIONS 408-35042		

TERMINAL DATA: TE TERMINAL		TE CRIMP SPECIFICATION	
TERMINAL NAME: MQSI.2 SOCKET CONTACT			
WIRE STRIP LENGTH 3.45-3.75 mm [.136-.148 IN]		INSULATION DIAMETER RANGE Ø1.20-1.60 mm [.047-.063 IN]	
TERMINAL APPLICATION SPECIFICATION	114-18286	-	-
TERMINALS APPLIED			
TE TERMINAL	TE TERMINAL	TE TERMINAL	TE TERMINAL
929393-1	929396-1	1355556-3	1-1452350-1
929393-3	1355556-1	1452158-1	

WIRE SIZE	CRIMP HEIGHT mm [INCH]	CRIMP HEIGHT REFERENCE SETTING
0.50mm2	1.01+/-0.05 [.040+/-0.002]	6.4
0.35mm2	0.92+/-0.05 [.036+/-0.002]	7.4

- 1 RECOMMENDED SPARE PARTS
- 2 REFER TO SUPPLIED INSTRUCTION SHEET FOR CLEANING, LUBRICATION AND STORAGE OF APPLICATOR.
- 3 APPLY PART NUMBER 2-23419-6 LOCTITE TO THREADS OF ITEM 242.
- 4 CRIMP HEIGHT REFERENCE SETTING WAS THE SETTING USED WHEN THE APPLICATOR WAS QUALIFIED AT THE FACTORY. ADJUSTMENT MAY BE NECESSARY WHEN RUNNING APPLICATOR IN THE FIELD.
- 5 UNLESS SPECIFIED OTHERWISE TORQUE VALUES SHALL BE USED PER DOCUMENT, 101-35000.
- 6 WHEN RUNNING TERMINAL PN 1-1452350-1, USE SET UP SHOWN ON EXPLODED VIEW FOR ITEMS 7 AND 50. WHEN RUNNING ALL OTHER TERMINALS PLACE ITEM 7 TO THE OPPOSITE SIDE OF ITEM 50.
- 7 USE TERMINAL SUPPORT ITEM 251 WHEN RUNNING TERMINAL PN 1-1452350-1. WHEN RUNNING ALL OTHER TERMINALS USE ITEM 34.

***WARNING**
ON INSTALLATION, SET WIRE DISC TO CRIMP HEIGHT REFERENCE SETTING FOR LARGEST WIRE SIZE. CRIMP HEIGHT REFERENCE SETTINGS GREATER THAN THE VALUE SHOWN MAY CAUSE DAMAGE TO THE CRIMP TOOLING, REFER TO THE INSTRUCTION SHEET FOR PROPER SETUP AND ADJUSTMENTS.

LOC	DIST	REVISIONS			
A	66	REV	DATE	BY	APPV
-	-	1	SEE SHEET 1	-	-

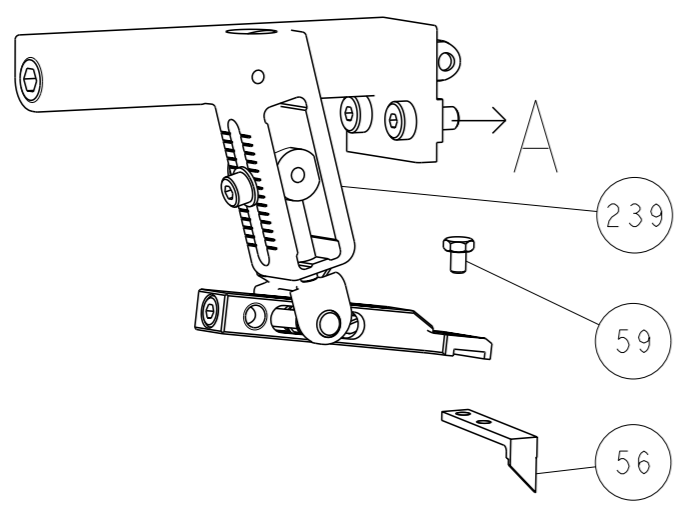
1	1	6-1752356-2	SUPPORT, TERMINAL	251
1	-	2119640-1	PUSH ROD, AIR FEED	250
1	-	1803259-1	BUSHING, FLANGED	249
1	1	2119082-8	CAM, SNAIL, INSULATION ADJUSTMENT	244
1	1	2079764-1	WASHER, WAVE SPRING, CREST-TO-CREST	243
1	1	2119083-1	RETAINER, INSULATION DIAL	242
1	1	7-18023-7	SCR, SKT HD CAP M3 X 4.0	241
-	-	2119580-1	MECHANICAL FEED ASSEMBLY	239
1	-	2063440-1	AIR FEED MODULE	238
2	-	21045-3	RING, RETAIN, EXTERN, 3/16 CRESCENT	172
REF	REF	994970-2	COUNTER, MAGNETIC	164
1	-	240638-1	SPRING, FEED FINGER	163
1	-	2119641-2	FEED CAM, AIR FEED	151
1	1	2168083-8	SCR, SKT HD CAP, RoHS, M4 X 16	144
4	4	2168083-9	SCR, SKT HD CAP, RoHS, M4 X 20	143
-	-	2119653-2	FEED CAM, POST FEED	142
1	1	1-1803583-0	APPLICATOR BASIC ASSEMBLY, SF	141
1	1	1803516-1	RAM ASSEMBLY, SF PACIFIC	140
1	-	3-23627-7	PIN, RETAIN, GRVD, 3/16 X .854	137
1	-	2119799-1	HOLDER, FEED FINGER, AF	136
1	1	1-18028-2	WASHER, FLAT, REG M4	119
1	1	2844908-1	SCREW, LOCKING	99
1	1	2844907-1	POST, LOCKING	98
1	1	455888-5	SPACER, CRIMPER	82
1	1	1803607-1	DOCUMENTATION PACKAGE	71
1	1	2119791-5	DEPRESSOR, WIRE	70
1	1	2119740-1	TAG, IDENTIFICATION	67
2	2	2168078-1	SCREW, DRIVE, RH, RoHS, 2 x .188	66
1	1	5-18022-5	SCR, HEX HD CAP, M4 X 6.0	59
1	1	1338685-1	PAWL, FEED	56
2	2	2-2168083-6	SCR, SKT HD CAP, RoHS, M4 X 18	53
1	1	1803382-6	HOLD DOWN, SPRING LOADED	50
1	2	18023-9	SCR, SKT HD CAP M4 X 6.0	49
-	-	2119652-1	FEED CAM, PRE FEED	48
1	1	1803602-1	SCR, BHSC, RoHS (M8 X 25)	41
1	1	2-1752356-0	SUPPORT, TERMINAL	34
2	2	2079383-5	SCR, BHSC, RoHS (M4 X 20)	33
2	2	2-2844962-6	SPACER, CYLINDRICAL, STRIP GUIDE	30
1	1	2844992-1	ASSEMBLY, STRIP GUIDE	29
1	1	1-455888-0	SPACER, CRIMPER	28
1	1	1320928-2	STRIP GUIDE	24
1	1	2168083-2	SCR, SKT HD CAP, RoHS, M4 X 8.0	21
1	1	1-18028-2	WASHER, FLAT, REG M4	20
1	1	2119533-1	STRIPPER, SIDE FEED	19
1	1	2119806-1	INSERT, SHEAR	13
1	1	3-22280-3	SPRING, COMPRESSION	12
1	1	1-356885-3	STOP, SHEAR	11
1	1	2119805-1	SHEAR HOLDER, FRONT	10
1	1	1633861-3	SHEAR, FLOATING	9
1	1	7-1333201-7	ANVIL, COMBINATION	8
1	1	5-240641-1	SPACER	7
-	-	-	-	6
1	1	2119757-8	DEPRESSOR, SHEAR	5
1	1	238011-9	BLOCK, CRIMPER SPACER	4
1	1	3-2119784-6	CRIMPER, INSULATION O PREMIUM	3
-	-	-	-	2
1	1	456402-1	CRIMPER, WIRE PREMIUM	1

PACIFIC VERSION
Shown on sheets 3 of 4 & 4 of 4
(Atlantic version shown on sheets 1 of 4 & 2 of 4)

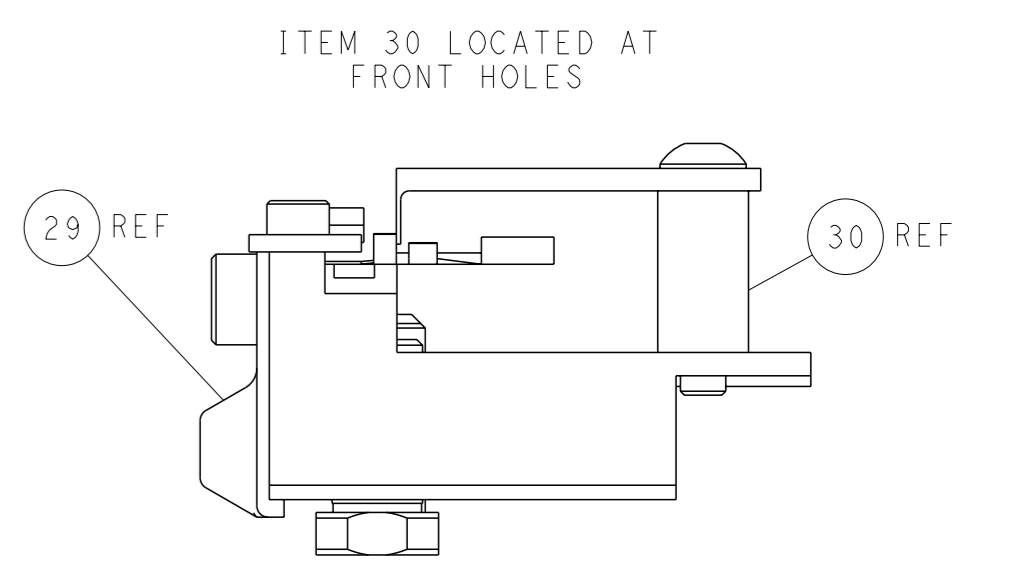
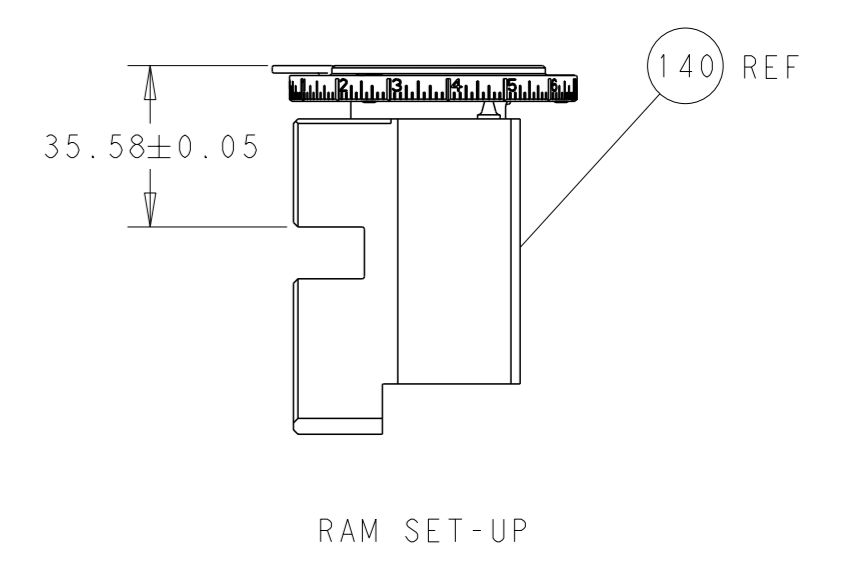
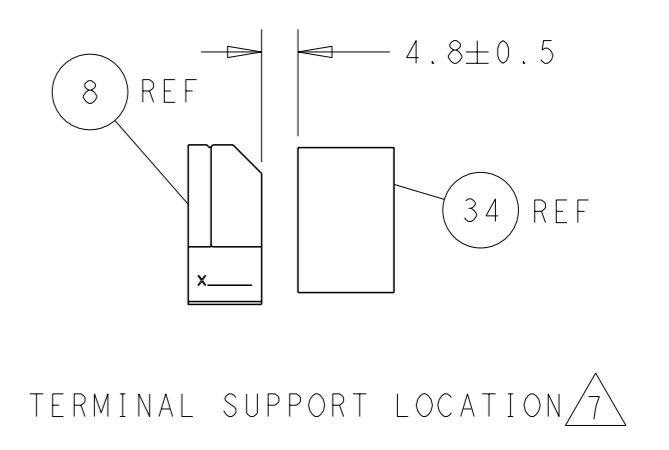
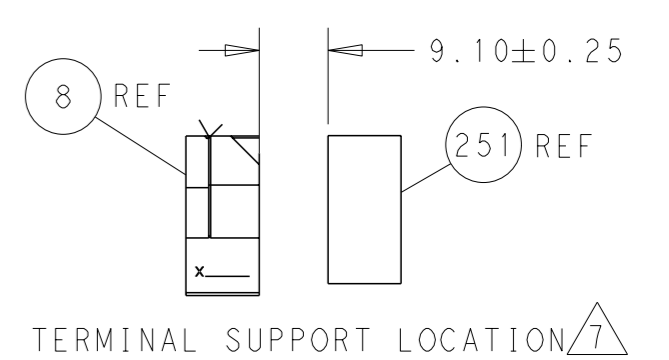
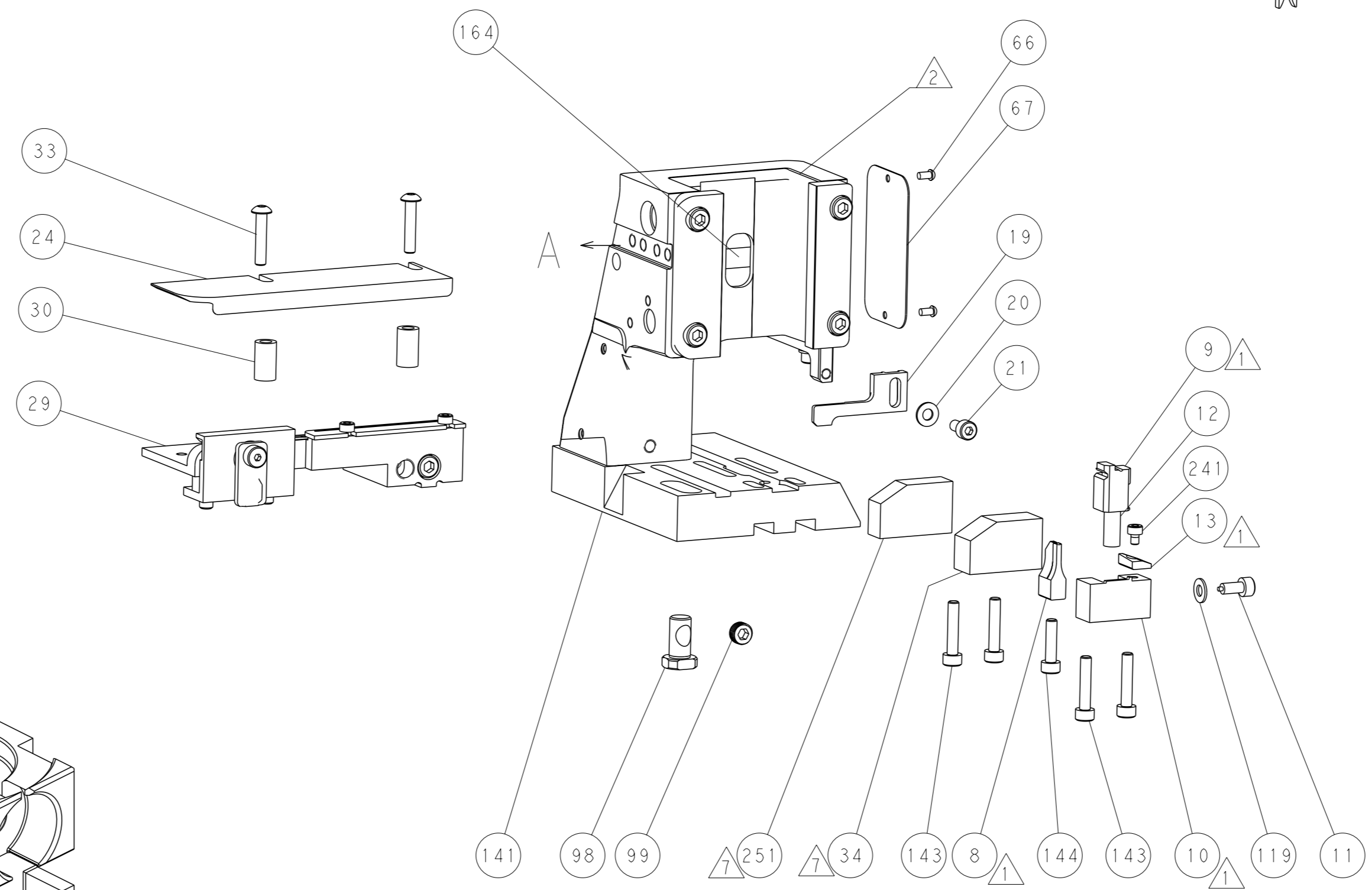
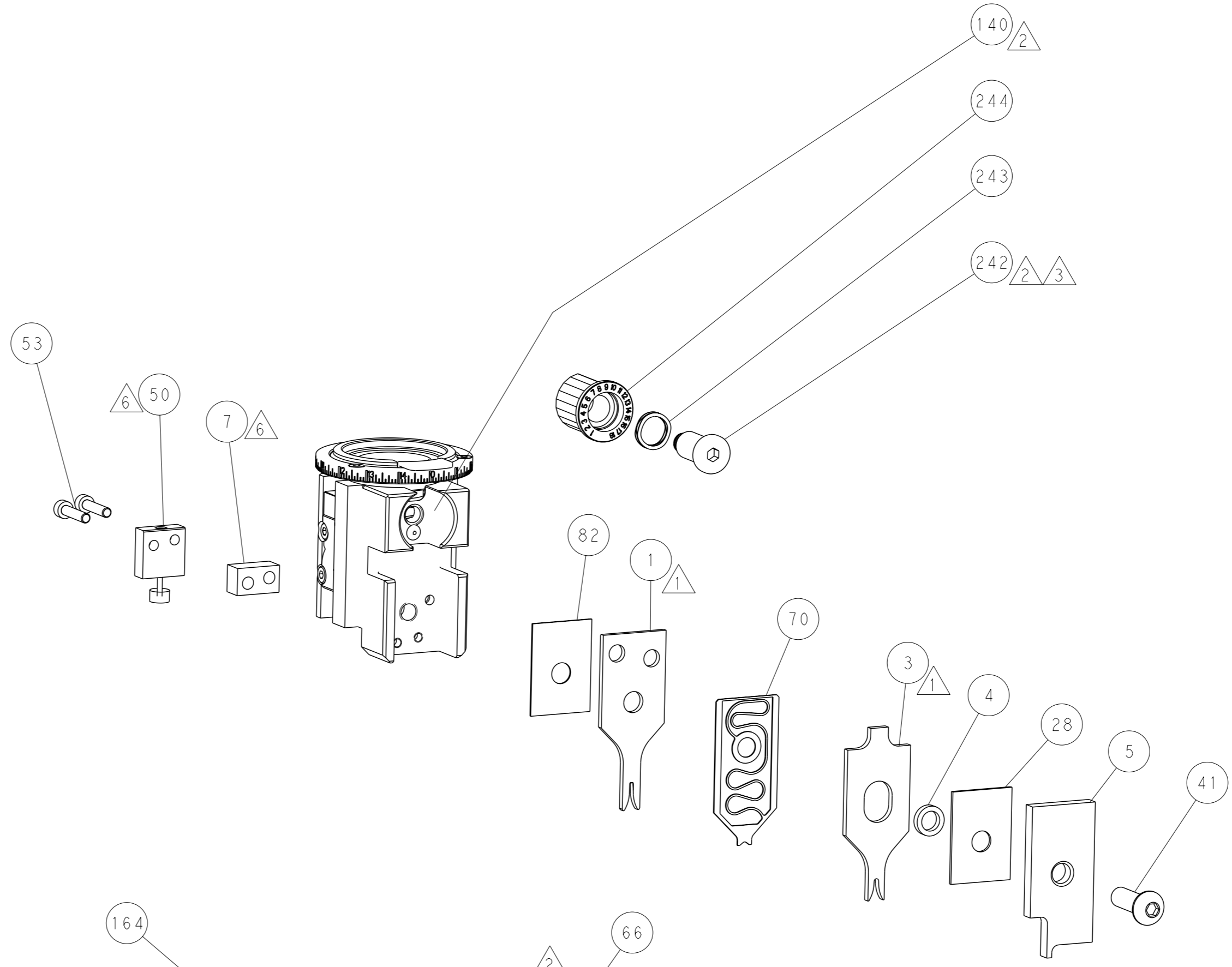
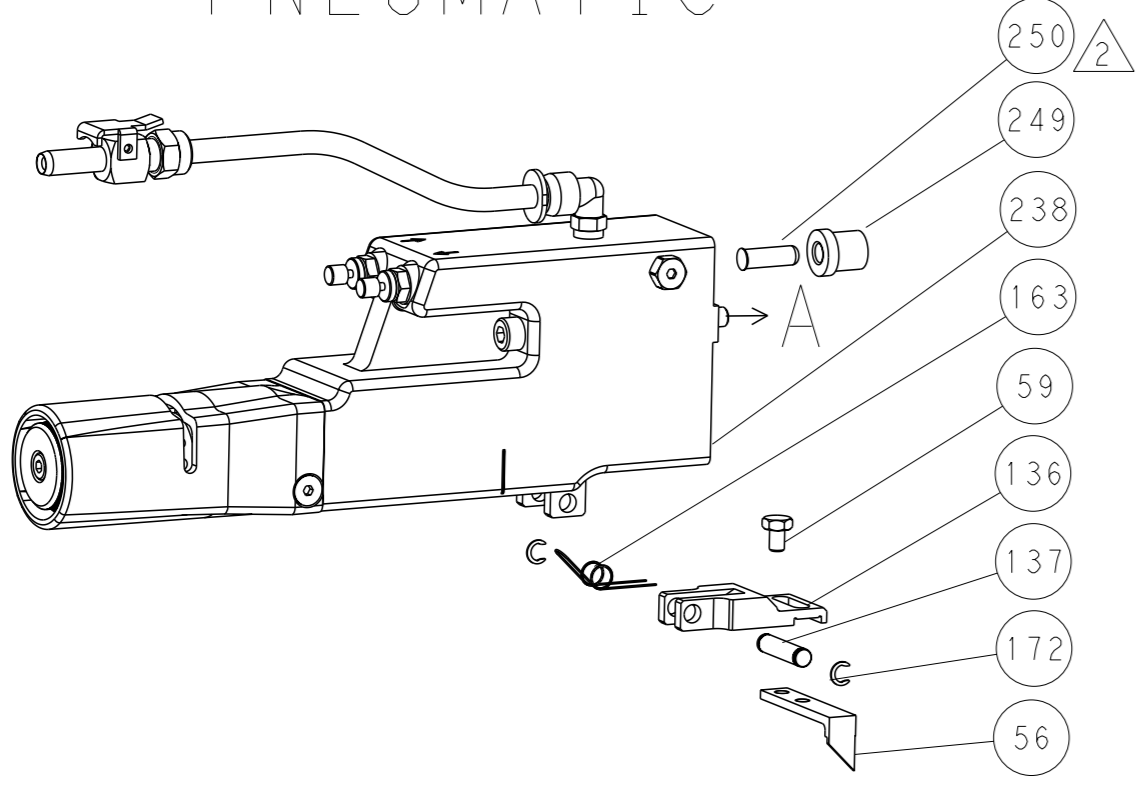
DIMENSIONS:		TOLERANCES UNLESS OTHERWISE SPECIFIED:		OWN Y. YIN 30NOV2012	TE Connectivity
mm	0 PLC ±	1 PLC ±	2 PLC ±	CHK G. BAILEY 30NOV2012	Harrisburg, PA 17105-3608
	3 PLC ±	4 PLC ±	ANGLES FINISH *	APVD S. XI 30NOV2012	
MATERIAL				NAME	Ocean Side Feed Applicator
				SIZE	00779
				CAGE CODE	00779
				DRAWING NO	2151252
				RESTRICTED TO	
				CUSTOMER DRAWING	SCALE 1:2 SHEET 3 OF 4 REV D

LOC	DIST	REVISIONS			
A	66	REV	DATE	OWN	APVD
		-	SEE SHEET 1	-	-

FEED TYPE MECHANICAL

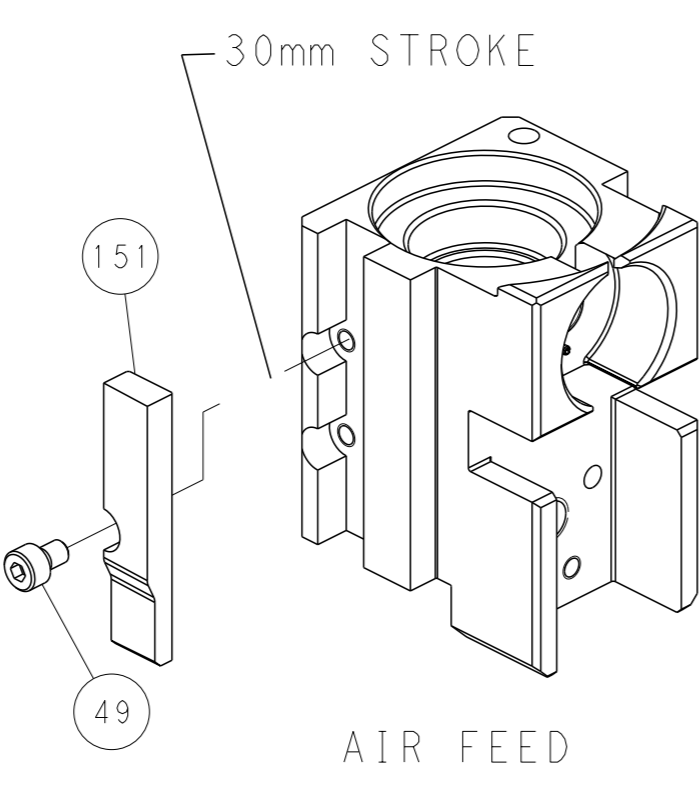
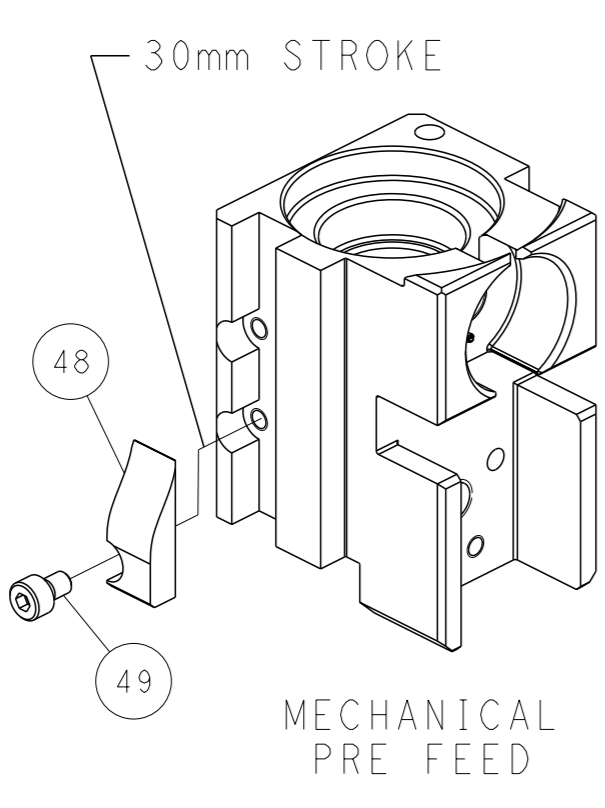
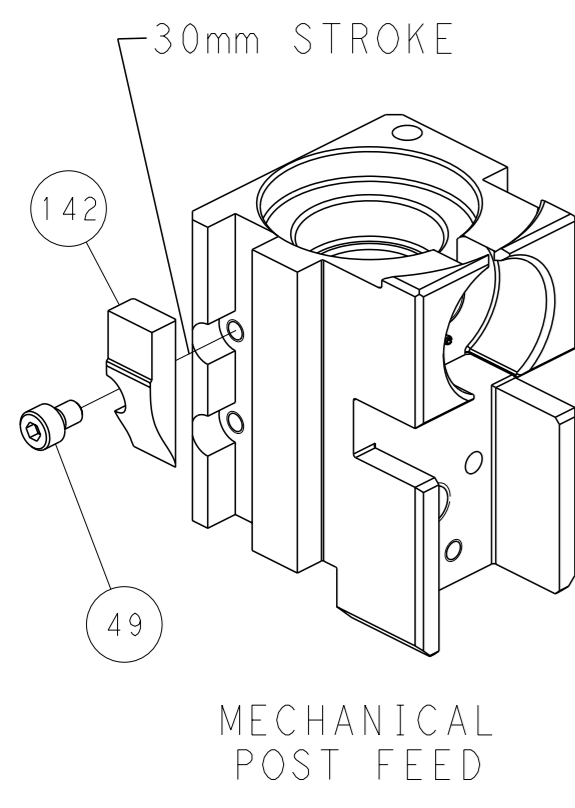


PNEUMATIC



FEED TRACK POSITION GUIDE BY INSULATION BARREL

CAM POSITIONS



PACIFIC VERSION
 Shown on sheets 3 of 4 & 4 of 4
 (Atlantic version shown on sheets 1 of 4 & 2 of 4)

<small>THIS DRAWING IS A CONTROLLED DOCUMENT FOR TYCO ELECTRONICS CORPORATION. IT IS SUBJECT TO CHANGE AND THE CONTROLLING ORGANIZATION SHOULD BE CONTACTED FOR THE LATEST REVISION.</small>		OWN: Y. YIN CHK: G. BAILEY APVD: S. XI DATE: 30NOV2012 PRODUCT SPEC: - APPLICATION SPEC: - WEIGHT: - CUSTOMER DRAWING: -	NAME: Ocean Side Feed Applicator SIZE: A1 CAGE CODE: 00779 DRAWING NO: C=2151252 SCALE: 1:2 SHEET: 4 of 4 REV: D	TE Connectivity Harrisburg, PA 17105-3608
----------------------------------------------------------------------------------------------------------------------------------------------------------------------------------------------	--	-----------------------------------------------------------------------------------------------------------------------------------------------	------------------------------------------------------------------------------------------------------------------------------------	----------------------------------------------