

NOTES:

1. MATERIAL: SEE TABLE.
2. FINISHES: SEE TABLE.
3. PRODUCT SPECIFICATION: NOT REQUIRED.
4. "XX" REFERS TO NUMBER OF CIRCUITS.
5. ROHS COMPLIANT.

3	5	SCREW #8-32X.290 BHD PHSL (OPT -A)	BRASS	NICKEL PLATE
2	5	TERMINAL 17 PC 8-32	BRASS	TIN PLATE
1	1	INSULATOR, SR, NO MTG.	POLYESTER (PBT)	BLACK
ITEM	QTY	DESCRIPTION	MATERIAL	FINISH

INITIAL RELEASE
 EC NO: WNA2009-0404
 DRAWN: ENC INAS 2009/01/15
 CHKD: CYORK 2009/01/15
 APPR: JMACNE IL 2009/01/16

QUALITY SYMBOLS
 ▽=0
 ▽=0

GENERAL TOLERANCES (UNLESS SPECIFIED)	
	mm INCH
4 PLACES	± --- ± ---
3 PLACES	± --- ± .005
2 PLACES	± 0.13 ± .01
1 PLACE	± 0.3 ± ---
ANGULAR ± 2 °	
DRAFT WHERE APPLICABLE MUST REMAIN WITHIN DIMENSIONS	

DIMENSION STYLE
MM/IN

SCALE
2:1

DESIGN UNITS
INCH

THIRD ANGLE PROJECTION

DRAWN BY JSCHOOLEY DATE 2006/05/18
 CHECKED BY EHILE DATE 2006/05/18
 APPROVED BY R. DEROSS DATE 2006/05/18

MATERIAL NO. SEE CHART

SIZE B

TITLE
11.11 [.438] SR BTS ASY, PC TERMINAL, NO MTG, OVERSIZED SCREW, -A-C-17

MOLEX INCORPORATED

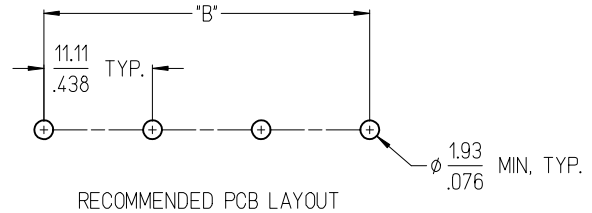
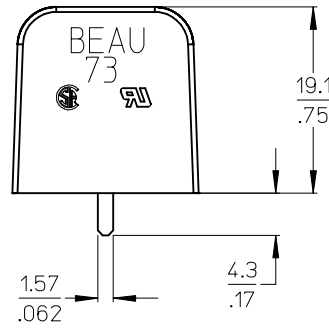
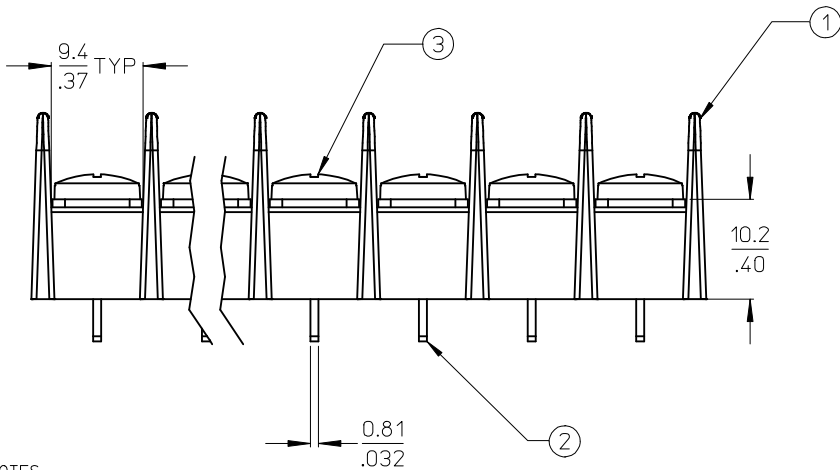
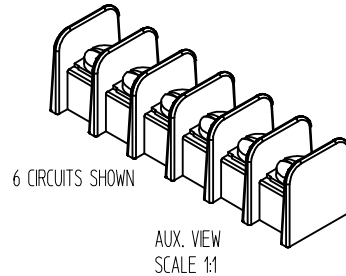
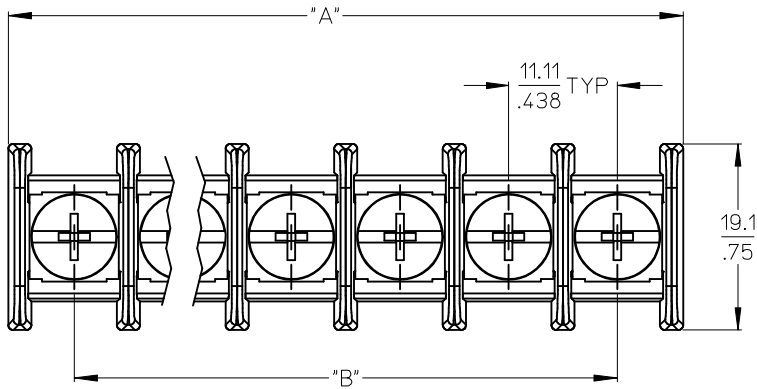
DOCUMENT NO. SD-38739-021

SHEET NO. 1 OF 2

THIS DRAWING CONTAINS INFORMATION THAT IS PROPRIETARY TO MOLEX INCORPORATED AND SHOULD NOT BE USED WITHOUT WRITTEN PERMISSION

# OF CIRCUITS "XX"	DIM. "A"		DIM. "B"		ASSEMBLY MATERIAL NO. (-A-C-17 OPT)
	mm	in	mm	in	
02	24.5	0.97	11.11	0.438	
03	35.7	1.40	22.23	0.875	
04	46.8	1.84	33.34	1.313	387390155
05	57.9	2.28	44.45	1.750	
06	69.0	2.72	55.56	2.188	
07	80.1	3.15	66.68	2.625	
08	91.2	3.59	77.79	3.063	387390002
09	102.3	4.03	88.90	3.500	
10	113.4	4.47	100.01	3.938	387390001
11	124.6	4.90	111.13	4.375	
12	135.7	5.34	122.24	4.813	
13	146.8	5.78	133.35	5.250	
14	157.9	6.22	144.46	5.688	
15	169.0	6.65	155.58	6.125	
16	180.1	7.09	166.69	6.563	
17	191.2	7.53	177.80	7.000	
18	202.3	7.97	188.91	7.438	
19	213.5	8.40	200.03	7.875	
20	224.6	8.84	211.14	8.313	
21	235.7	9.28	222.25	8.750	
22	246.8	9.72	233.36	9.188	
23	257.9	10.15	244.48	9.625	
24	269.0	10.59	255.59	10.063	
25	280.1	11.03	266.70	10.500	
26	291.2	11.47	277.81	10.938	
27	302.4	11.90	288.93	11.375	
28	313.5	12.34	300.04	11.813	
29	324.6	12.78	311.15	12.250	
30	335.7	13.22	322.26	12.688	

SEE SHEET ONE EC NO: WNA2009-0404 DRWN: JENC INAS 2009/01/15 CHKD: CYORK 2009/01/15 APPR: JMACNE IL 2009/01/16	QUALITY SYMBOLS Ra=0 Rmax=0	GENERAL TOLERANCES (UNLESS SPECIFIED)		DIMENSION STYLE MM/IN		SCALE 2:1	DESIGN UNITS INCH	THIRD ANGLE PROJECTION
		4 PLACES ± --- ± ---	mm INCH	DRAWN BY DATE JSCHOOLEY 2006/05/18	TITLE 11.11 [.438] SR BTS ASY, PC TERMINAL, NO MTG, OVERSIZED SCREW, -A-C-17			
		3 PLACES ± --- ± .005		CHECKED BY DATE EHILE 2006/05/18				
		2 PLACES ± 0.13 ± .01		APPROVED BY DATE R. DEROSS 2006/05/18	MOLEX INCORPORATED			
1 PLACE ± 0.3 ± ---		MATERIAL NO.	DOCUMENT NO. SD-38739-021	SHEET NO. 2 OF 2				
DRAFT WHERE APPLICABLE MUST REMAIN WITHIN DIMENSIONS		SEE CHART		THIS DRAWING CONTAINS INFORMATION THAT IS PROPRIETARY TO MOLEX INCORPORATED AND SHOULD NOT BE USED WITHOUT WRITTEN PERMISSION				



QTY CKTS	DIM "A"		DIM "B"		MATERIAL NO. -A-C-17 OPT
	MM	INCH	MM	INCH	
2	24.5	0.97	11.11	0.438	
3	35.7	1.40	22.23	0.875	
4	46.8	1.84	33.34	1.313	387390155
5	57.9	2.28	44.45	1.750	
6	69.0	2.72	55.56	2.188	
7	80.1	3.15	66.68	2.625	
8	91.2	3.59	77.79	3.063	387390002
9	102.3	4.03	88.90	3.500	
10	113.4	4.47	100.01	3.938	387390001
11	124.6	4.90	111.13	4.375	
12	135.7	5.34	122.24	4.813	
13	146.8	5.78	133.35	5.250	
14	157.9	6.22	144.46	5.688	
15	169.0	6.65	155.58	6.125	
16	180.1	7.09	166.69	6.563	
17	191.2	7.53	177.80	7.000	
18	202.3	7.97	188.91	7.438	
19	213.5	8.40	200.03	7.875	
20	224.6	8.84	211.14	8.313	
21	235.7	9.28	222.25	8.750	
22	246.8	9.72	233.36	9.188	
23	257.9	10.15	244.48	9.625	
24	269.0	10.59	255.59	10.063	
25	280.1	11.03	266.70	10.500	
26	291.2	11.47	277.81	10.938	
27	302.4	11.90	288.93	11.375	
28	313.5	12.34	300.04	11.813	
29	324.6	12.78	311.15	12.250	
30	335.7	13.22	322.26	12.688	

NOTES:

1. MATERIAL: SEE DETAILS
2. FINISHES: SEE DETAILS
3. PRODUCT SPECIFICATION: NOT REQUIRED
4. "XX" REFERS TO THE NUMBER OF CIRCUITS
5. ROHS COMPLIANT

ITEM	QTY.	DESCRIPTION	MATERIAL	FINISH
3	XX	#8-32 SCREW (OPT -A)	BRASS	NICKEL PLATE
2	XX	TERMINAL, 17 PC 8-32	BRASS	TIN PLATE
1	1	INSULATOR, SR, NO MTG	POLYESTER (PBT)	BLACK

INITIAL RELEASE EC NO: WINA2009-0537 DRWN: ENC INAS 2009/04/22 CHKD: CYORK 2009/05/11 APPR: JMACNE IL 2009/05/12 REV A	QUALITY SYMBOLS ▽=0 ▽=0	GENERAL TOLERANCES (UNLESS SPECIFIED)		DIMENSION STYLE MM/IN		SCALE 2:1	DESIGN UNITS INCH	THIRD ANGLE PROJECTION
		4 PLACES ± --- ± --- 3 PLACES ± --- ± .005 2 PLACES ± 0.13 ± .01 1 PLACE ± 0.3 ± ---	DRAWN BY JSCHOOLEY	DATE 2006/05/18	TITLE 11.11 [.438] SR BTS ASY, PC TERMINAL, NO MTG, OVERIZED SCREW, -A-C-17			
		ANGULAR ± 2 °	CHECKED BY EHILE	DATE 2006/05/18	MOLEX INCORPORATED			
		DRAFT WHERE APPLICABLE MUST REMAIN WITHIN DIMENSIONS	APPROVED BY R. DEROSS	DATE 2006/05/18	MATERIAL NO. SEE CHART	DOCUMENT NO. SD-38739-023	SHEET NO. 1 OF 1	