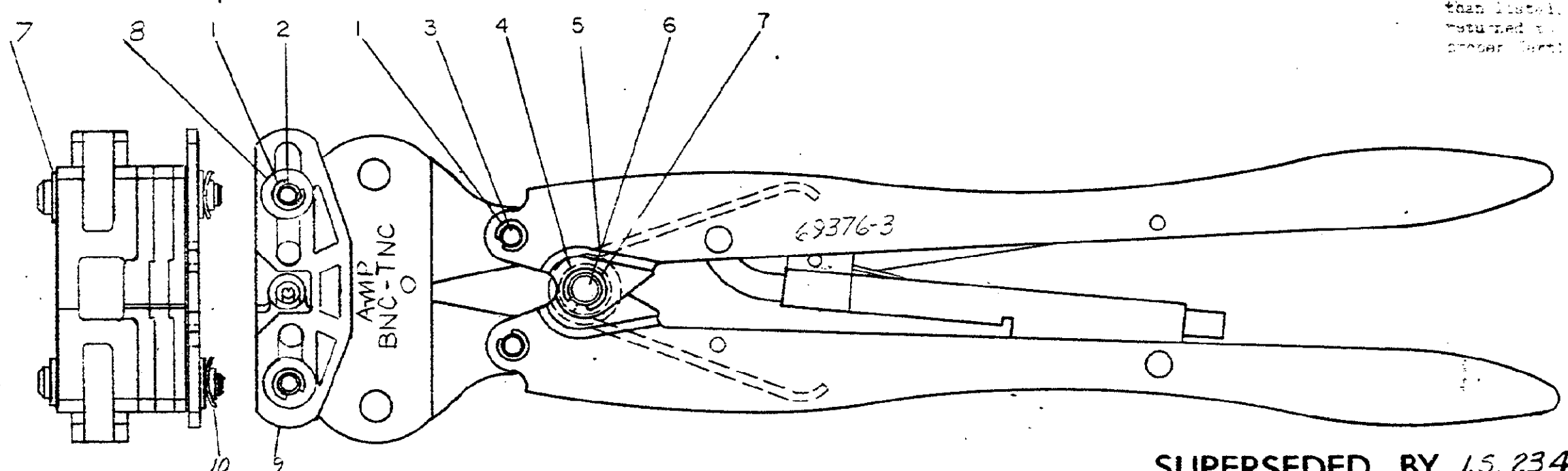
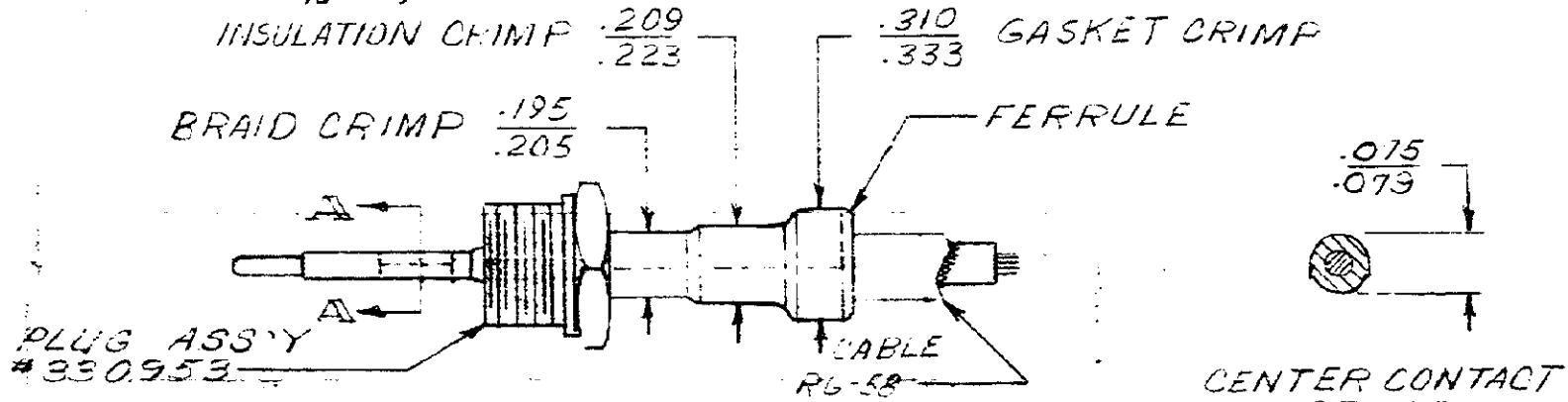


For replacement of parts other than listed, tool should be returned to our Factory to insure proper part/crimp adjustment.



SUPERSEDED BY 1.5.2349



METHOD OF GAGING CRIMP DIMS.
THE CRIMP DIMS. APPLY ONLY
TO THE ABOVE COMBINATIONS
ON A CRIMPED PRODUCT

2	24088-8	CURVED WASHER	10
1	307089-2	LOCATOR	9
2	125115-1	WASHER	8
4	21045-6	RING - RETAINING	7
1	300449	PIN - RETAINING	6
1	39364	SPRING	5
1	39366	COLLAR	4
2	38783	PIN - RETAINING	3
2	1-306055-3	PIN - RETAINING	2
6	21045-3	RING - RETAINING	1

PRINT 1293-2 (6/62)
 DIMENSIONS IN INCHES. DO NOT SCALE DRAWING

REVISION RECORD	DR	CHK	DATE
A REVISED	B.S.	R	8-67
B REVISED	PL	RIF	6-50
C REVISED	PL	RIF	4-55
D REVISED	B.S.	ENF	1-71
E REVISED	PL	RIF	1-71
E1 SUP BY 1.5.2349	ENF	RIF	3-20

REVISION NUMBER	DESCRIPTION
69376-3	

3	DWG SIZE	NUMBER	NAME	REMARKS	REV NO
© 1967 BY AMP INCORPORATED. ALL RIGHTS RESERVED. AMP PRODUCTS COVERED BY PATENTS AND/OR PATENT PENDING NO.				CUSTOMER COPY REFERENCE ONLY	
DR: <i>G. J. Flaupnik</i> CRK: <i>R. J. [unclear]</i> 3-23-67 DE: <i>[unclear]</i> APP: <i>[unclear]</i> 4-10-67		MATERIAL AND FINISH: _____ WIRE RANGE: _____ INSULATION: _____ TOLERANCE EXCEPT AS NOTED: ± .015 ± 1° 1-1		TYPE: BNC-TNC LOC: M B NO: 69376-3 ET	
HAND TOOL ASSEMBLY				AMP INCORPORATED HARRISBURG PENNA.	

8 7 6 5 4 3 2 1