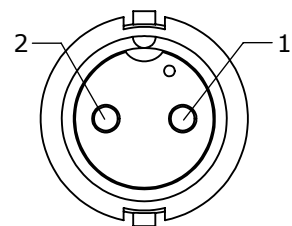


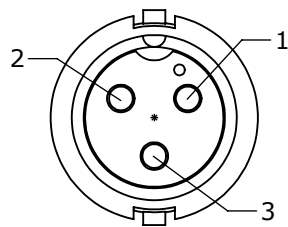
CUSTOMER PRINT

PART NUMBER: 6280-XPG-3XX

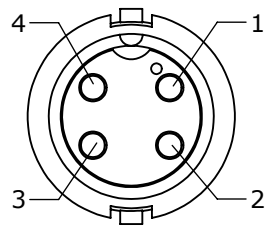
NOTES:  
 1. ALL PARTS TO BE BULK PACKED.  
 2. ALL DIMENSIONS ARE REFERENCE ONLY.



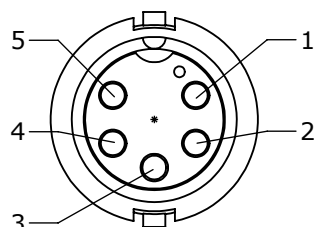
**FACE VIEW**  
6280-2PG-3XX



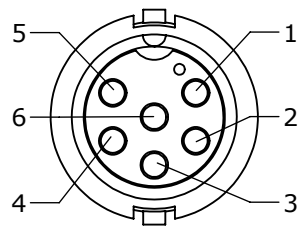
**FACE VIEW**  
6280-3PG-3XX



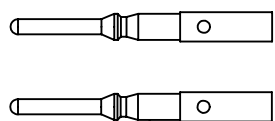
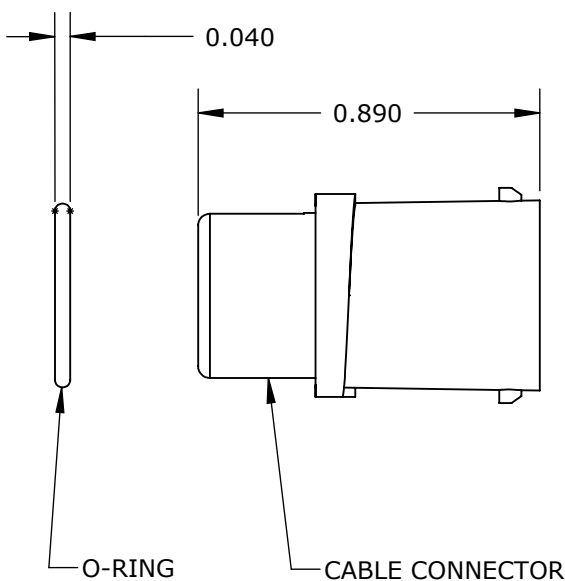
**FACE VIEW**  
6280-4PG-3XX



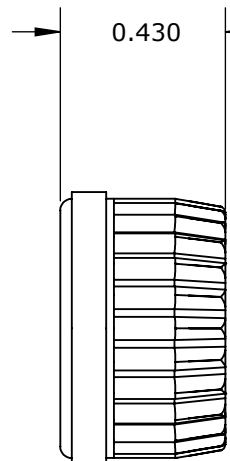
**FACE VIEW**  
6280-5PG-3XX



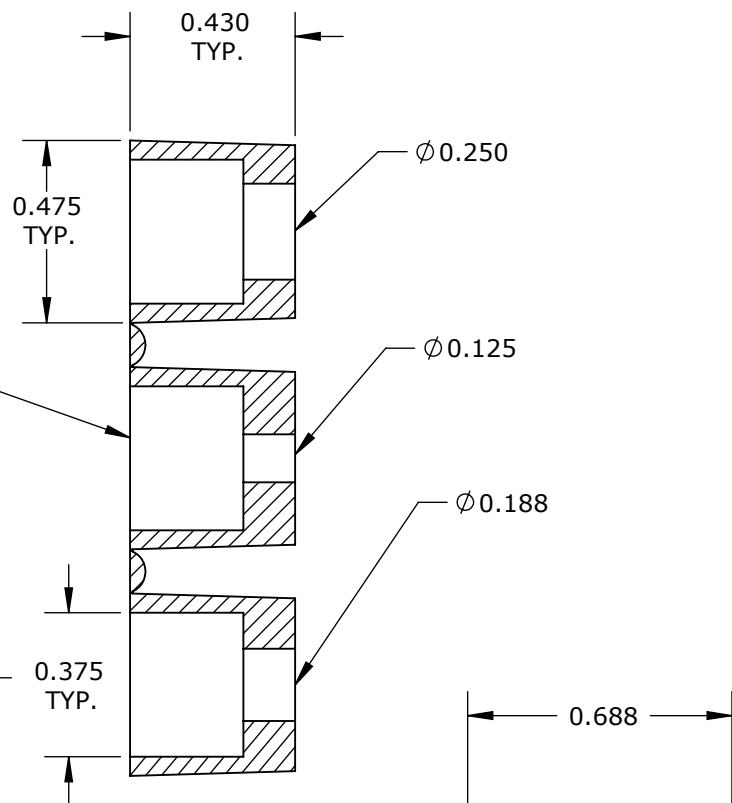
**FACE VIEW**  
6280-6PG-3XX



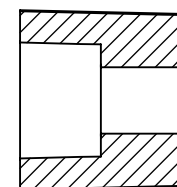
(2-6) #20 PIN CONTACTS



COUPLING RING

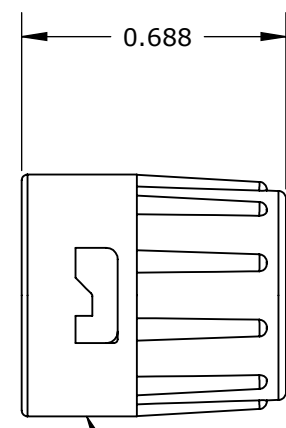


GROMMET, DAISY CHAIN  
FOR 6280-XPG-3DC

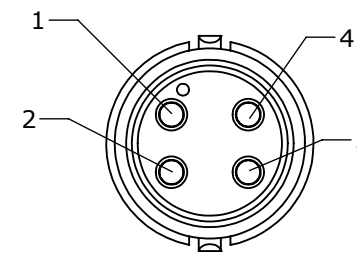


SINGLE GROMMET

6280-XPG-311 .125 I.D. FOR CABLES .09-.14 O.D.  
 6280-XPG-315 .188 I.D. FOR CABLES .15-.17 O.D.  
 6280-XPG-318 .156 I.D. FOR CABLES .18-.20 O.D.  
 6280-XPG-321 .225 I.D. FOR CABLES .21-.23 O.D.



BACKSHELL



**WIRE VIEW**  
6280-4PG-3XX SHOWN

ASSY P/N	NO. OF CONTACTS
6280-2PG-3XX	2 #20
6280-3PG-3XX	3 #20
6280-4PG-3XX	4 #20
6280-5PG-3XX	5 #20
6280-6PG-3XX	6 #20
6280-XPG-3XX	

GROMMET SIZE FOR  
SINGLE GROMMET OR  
"DC" FOR DAISY CHAIN

NO. OF CONTACTS

ASSY P/N	GROMMET SIZE
6280-XPG-3DC	DAISY CHAIN
6280-XPG-311	CABLE O.D. .09-.14
6280-XPG-315	CABLE O.D. .15-.17
6280-XPG-318	CABLE O.D. .18-.20
6280-XPG-321	CABLE O.D. .21-.23

CUSTOMER APPROVAL

THIS DOCUMENT CONTAINS CONFIDENTIAL INFORMATION PROPRIETARY TO CONXALL CORPORATION. ANY REPRODUCTION, DISCLOSURE, OR USE OF THIS DOCUMENT /INFORMATION IS EXPRESSLY PROHIBITED UNLESS AUTHORIZED IN WRITING BY CONXALL CORPORATION.

APPROVED BY: \_\_\_\_\_

DATE: \_\_\_\_\_

A	BZ	03-26-08	DRAWING CREATED PER DOR 09-1328CM
REV.	INIT.	DATE	DESCRIPTION
	BZ	03-26-09	ALL INFORMATION ILLUSTRATED IS THE PROPERTY OF "CONXALL CORPORATION." UNAUTHORIZED DUPLICATION OR DISTRIBUTION OF THIS DOCUMENT IS PROHIBITED.
APPROVED BY:			 601 E. WILDWOOD VILLA PARK, IL 60181
TITLE: CONNECTOR ASSEMBLY KIT 2-6 #20 PIN CONTACTS MINI-CON-X			
CUSTOMER: STANDARD PRODUCT			REV A
SCALE	SIZE	SHEET	
NTS	B	1 OF 1	
FILE:	DIRECTORY:	PART NUMBER:	
6280-XPG-3XX	SLW	6280-XPG-3XX	