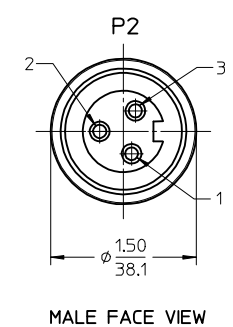
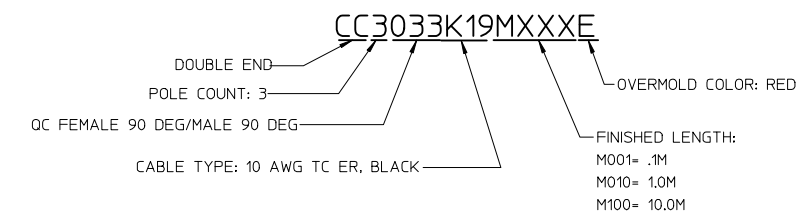


- NOTES:
- 1) MATERIAL: SEE TABLE
  - 2) FINISHES: SEE TABLE
  - 3) WRAP LABEL IS MARKED WITH P/N, DATE CODE VOLTAGE & AMPERAGE
  - 4) MATES WITH: QUICK CHANGE 3 POLE RECEPTACLE
  - 5) ELECTRICAL DATA:  
 10AWG UL TYPE: TC-ER STRANDED CABLE  
 MAX VOLTAGE: 600V  
 MAX CURRENT: 32A  
 PROTECTION IP67 (WHEN MATED)  
 TEMPERATURE RANGE: -20°C TO 90°C
  - 6) PACKAGING:  
 CABLE ASSEMBLIES ARE BAGGED SEPERATLY IN POLY BAGS WITH BAR CODE LABEL ATTACHED TO OUTSIDE OF BAG.
  - 7) ASSEMBLY IS RoHS COMPLIANT



11	2	WARNING LABEL	VINYL	ORANGE/BLACK
10	1	WRAP LABEL	VINYL	BLACK/YELLOW
9	1	OVERMOLD (MALE 90 DEG)	PVC	RED
8	1	COUPLING (MALE)	ALUMINUM	CLEAR ANNODIZE
7	3	CONTACT PIN	Cu ALLOY	GOLD PLATED
6	1	INSERT (MALE)	PVC	BLACK
5	1	OVERMOLD (FEMALE 90 DEG)	PVC	RED
4	1	COUPLING	ALUMINUM	CLEAR ANNODIZE
3	3	CONTACT SOCKET	Cu ALLOY	GOLD PLATED
2	1	INSERT	PVC	BLACK
1	1	CABLE, 10/3 TC-ER (SEE NOTE 5)	TPE JACKET	BLACK
ITEM	QTY.	DESCRIPTION	MATERIAL	DESCRIPTION

PART NUMBER LEGEND



RELEASED EC NO: IPG2016-0830 DRAWNRSTONE 2015/12/18 CHKD: APPR: BWOODMAN 2016/02/29 REV: A	QUALITY SYMBOLS	GENERAL TOLERANCES (UNLESS SPECIFIED)	DIMENSION STYLE IN/MM	SCALE 1:1	DESIGN UNITS INCH	THIRD ANGLE PROJECTION
	▽=0	4 PLACES ± --- ± ---	DRAWN BY RSTONE	DATE 2015/12/18	TITLE QUICK CHANGE CORD ASSY FEM 90D TO MALE 90D, RED 10AWG TPE CABLE	SHEET NO. 1 OF 1
	▽=0	3 PLACES ± --- ± ---	CHECKED BY	DATE	<b>molex</b> DOCUMENT NO. SD-130064-011	
	▽=0	2 PLACES ± --- ± .01	APPROVED BY BWOODMAN	DATE 2016/02/29		THIS DRAWING CONTAINS INFORMATION THAT IS PROPRIETARY TO MOLEX INCORPORATED AND SHOULD NOT BE USED WITHOUT WRITTEN PERMISSION