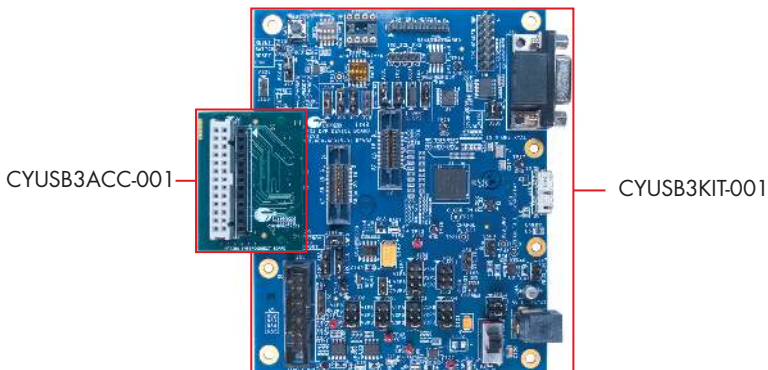
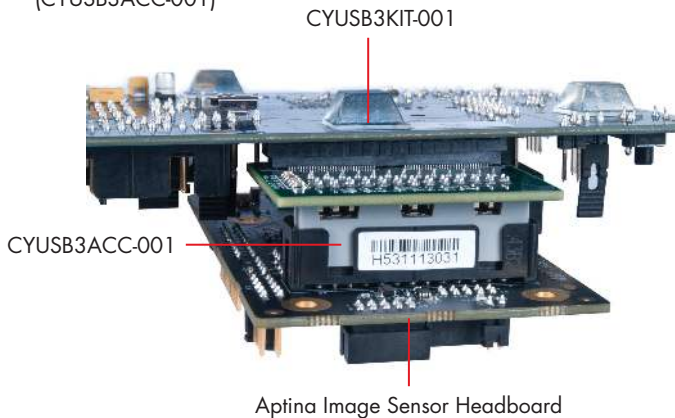


# APTINA™ IMAGE SENSOR INTERCONNECT BOARD CYUSB3ACC-001

1. Connect the Aptina™ Image Sensor Interconnect Board (CYUSB3ACC-001) to EZ-USB® FX3™ Development Kit (CYUSB3KIT-001)

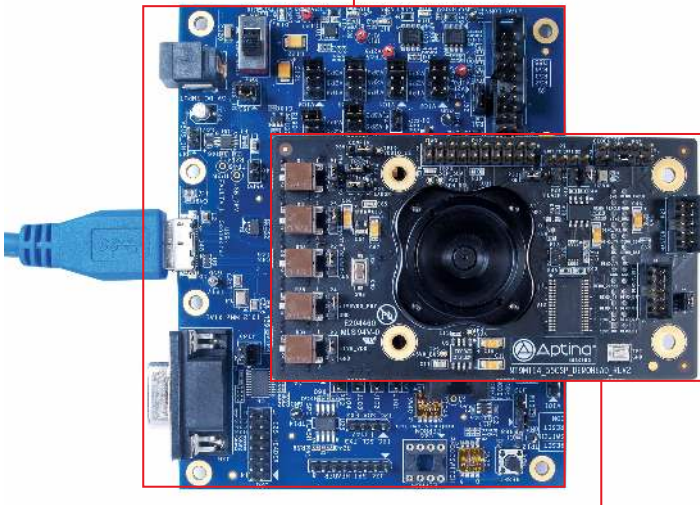


2. Plug the Aptina Image Sensor Headboard into the interconnect board (CYUSB3ACC-001)



# APTINA™ IMAGE SENSOR INTERCONNECT BOARD CYUSB3ACC-001

CYUSB3KIT-001



Aptina Image Sensor Headboard

- Learn to use FX3 in applications involving image sensors with the application note **AN75779 - How to Implement an Image Sensor Interface with EZ-USB FX3 in a USB Video Class (UVC) Framework** available at <http://www.cypress.com/go/AN75779>

For the latest information about this interconnect board and to download the hardware files, visit [www.cypress.com/go/CYUSB3ACC-001](http://www.cypress.com/go/CYUSB3ACC-001)

For the latest information about EZ-USB FX3 Development Kit CYUSB3KIT-001 and to download Kit Software and Hardware files, visit [www.cypress.com/go/CYUSB3KIT-001](http://www.cypress.com/go/CYUSB3KIT-001)