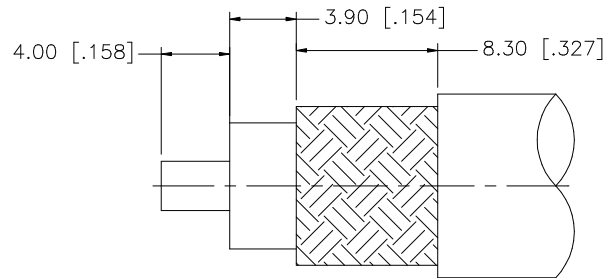
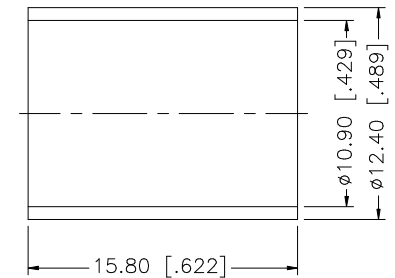
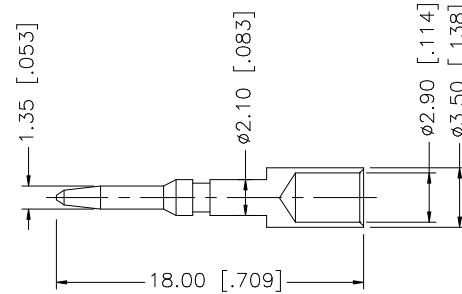
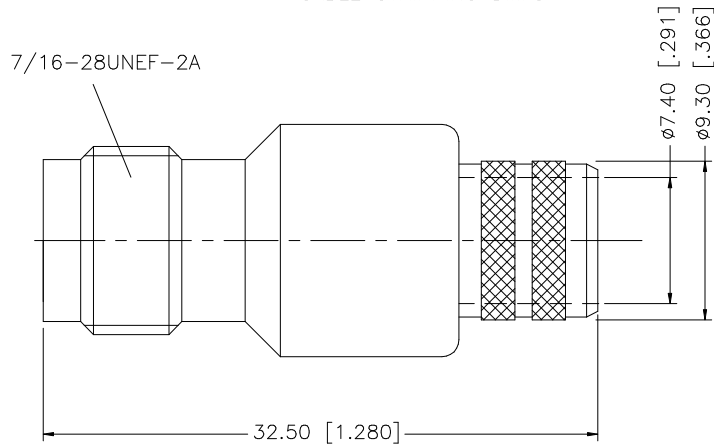


REV.	DATE	DESCRIPTION
NC	05/05/97	INITIAL RELEASE
A	01/11/07	UPDATE DRAWING FORMAT



RECOMMENDED
CABLE STRIPPING DIM'S



NOTE:

1. CRIMPED FERRULE HEX CRIMP SIZE .429"
2. CRIMPED CONTACT PIN HEX CRIMP SIZE .118"

8				<small>UNLESS OTHERWISE SPECIFIED DIMENSIONS ARE IN MILLIMETERS. DIMENSIONS IN [] ARE IN INCHES AND FOR CUSTOMER REFERENCE ONLY.</small> <small>UNLESS OTHERWISE SPECIFIED TOLERANCES FOR MILLIMETERS ARE:</small> 0.5 - 8mm ± 0.20mm 8 - 30mm ± 0.40mm 30 - 120mm ± 0.50mm <small>UNLESS OTHERWISE SPECIFIED TOLERANCES FOR INCHES ARE:</small> .020 - .315 = ± 0.007" .315 - 1.180 = ± 0.015" 1.180 - 4.724 = ± 0.020"	APPROVALS	DATE	<h1 style="color: blue;">Amphenol Connex</h1> <p>TNC REVERSE POLARITY CRIMP JACK (FOR BELDEN 9913, 9914)</p>	
7					DRAWN	G.R.S.		01/11/07
6					CHECKED			
5					ISSUED			
4	FERRULE	COPPER	NICKEL		1	SHEET		1 OF 1
3	CONTACT PIN	BRASS	GOLD	1	PART DESCRIPTION		122392RP	
2	INSULATOR	TEFLON	NATURAL	1	PART NO.			
1	BODY	BRASS	NICKEL	1	DWG. NO.		122392RP.DWG	
	DESCRIPTION	MATERIAL	FINISH	QTY	DO NOT SCALE DRAWING		REV. A	
					C:/122/122392RP.DWG		SIZE A	
							SCALE NA	