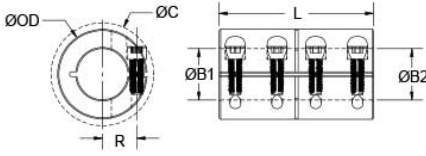




CLX-16-14-F

Ruland CLX-16-14-F, 1" x 7/8" Rigid Coupling, Black Oxide Steel, One-Piece Clamp Style, 1 3/4" OD, 3" Length




Description

Ruland CLX-16-14-F is a one-piece rigid coupling with 1.0000" x 0.8750" bores, 1 3/4" OD, and 3" length. Proprietary Nypatch® anti-vibration coating on hardware allows for even seating of the screw, repeated screw installations, prevents galling, and maintains high holding power. It eliminates the need to treat screws upon receipt greatly reducing installation time. Forged screws test beyond ANSI standards to ensure maximum holding power. Tightly controlled bore tolerance of $\pm 0.002"/\pm 0.0005"$ is maintained. CLX-16-14-F is made from 1215 lead-free steel with a proprietary black oxide finish that produces a fine glossy finish while increasing holding power and resisting corrosion. It is machined from solid bar stock that is sourced exclusively from North American mills and is RoHS3 and REACH compliant. CLX-16-14-F is manufactured in our Marlborough, MA factory under strict controls using proprietary processes.

Product Specifications

Bore (B1)	1.0000 in	Small Bore (B2)	0.8750 in
B1 Max Shaft Penetration	1.500 in	B2 Max Shaft Penetration	1.500 in
Outer Diameter (OD)	1 3/4 in	Bore Tolerance	± 0.0020 in / ± 0.0005 in
Length (L)	3 in	Clearance Diameter (C) MAX	2.049 in
Recommended Shaft Tolerance	± 0.0000 in / ± 0.0005 in	Forged Clamp Screw	1/4-28
Screw Material	Alloy Steel with Nypatch®	Hex Wrench Size	3/16 in
Screw Finish	Black Oxide	Seating Torque	170 lb-in
Screw Location (R)	0.670 in	Number of Screws	4 ea
Rated Torque	4000 in-lb	Moment of Inertia	0.6787 lb-in ²
Maximum Speed	4,000 RPM	Full Bearing Support Required?	No
Nypatch® Anti-Vibration Hardware?	Yes	Zero-Backlash?	Yes
Material Specification	1215 Carbon Steel Bar	Temperature	-40°F to 350°F (-40°C to 176°C)
Finish Specification	Hot Process Black Oxide, Impregnated with Naphthenic Oil, Centrifugally Dried	Manufacturer	Ruland Manufacturing
Country of Origin	USA	Weight (lbs)	1.372200
UPC	634529003985	Tariff Code	8483.60.8000
UNSPC	31163009		

Note 1 Performance ratings are for guidance only. The user must determine suitability for a particular application.

Prop 65  **WARNING** This product can expose you to the chemical Ethylene Thiourea, known to the State of California to cause cancer and birth defects or other reproductive harm. For more information go to www.P65Warnings.ca.gov.

Installation Instructions

1. Align the CLX-16-14-F one-piece rigid coupling on the two shafts to be connected. There should be no misalignment.
2. Tighten the Nypatch® screws in two stages, starting with the inside screws. Using a 3/16 in torque wrench, tighten the inside screws to 85 lb-in which is half the recommended seating torque. Repeat for the outside screws, again tightening to half of the recommended seating torque.
3. Tighten the screws to the full recommended seating torque of 170 lb-in following the same pattern, starting with the inside screws first.