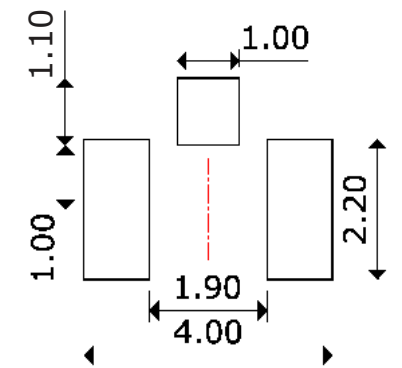
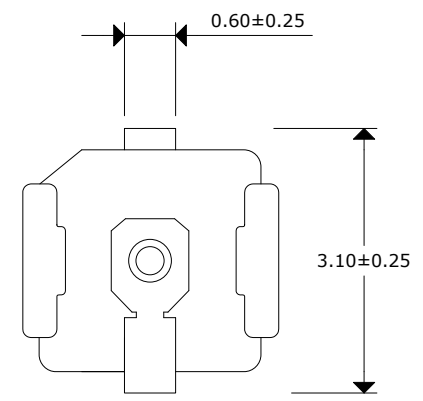
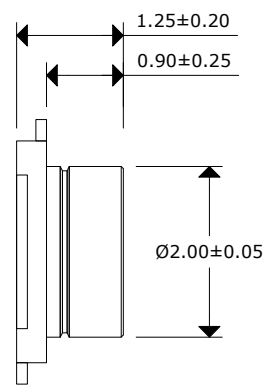
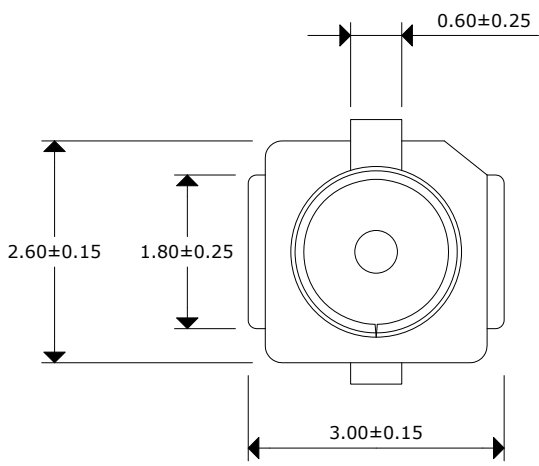
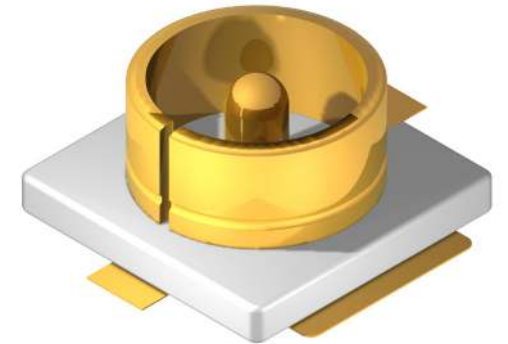


SCNRF - 6AAN - P1FS

SUNTSU
CONNECTOR
RF
MAXIMUM FREQUENCY
 6 GHz
IMPEDANCE
 50Ω
MOUNT TYPE
 Panel
CONNECTOR TYPE
 I-PEX
GENDER
 Female
ORIENTATION
 Straight



Recommended Mounting Layout

Impedance: 50Ω
 Frequency Range: 0GHz - 6GHz
 Voltage Standing Wave Ratio (VSWR): 1.5 MAX
 Working Voltage: 200 Vrms MAX
 Dielectric Withstanding Voltage: 200 Vrms MIN
 Operating Temperature: -40°C to 90°C
 Center Contact Resistance: 20 mΩ MAX
 Outer Contact Resistance: 10 mΩ MAX
 Insulation Resistance: 500 mΩ MIN



IPEX PANEL MOUNT FEMALE STRAIGHT CONNECTOR

Document History				Part No.	REV.	Drawn	Page
Edits Made	Date	Edited By	Approved By	SCNRF-6AAN-P1FS	A	B. Gibbons	02/02/2021
Initial Release	02/02/2021	B. Gibbons	KH Mun		Drawing No.	Checked	KH Mun
				Tolerance	None		1 / 1
					UNIT	Approved	
					mm	KH Mun	02/02/2021