

PART NUMBER	REV	FIRST USED	TERMINATOR	FEED TYPE	DESCRIPTION
1426506-1	B	-	LEADMAKER	MECH POST FEED	CUTS CARRIER
1426506-2	B	-	BENCH	MECH PRE FEED	CUTS CARRIER
1426506-6	B	-	LEADMAKER	MECH POST FEED	CONTINUOUS CARRIER
7-1426506-1	B	-	LEADMAKER	MECH POST FEED	-1 AND SPARE PARTS
7-1426506-2	B	-	BENCH	MECH PRE FEED	-2 AND SPARE PARTS
7-1426506-6	B	-	LEADMAKER	MECH POST FEED	-6 AND SPARE PARTS
7-1426506-7	A	-	-	-	SPARE PARTS KIT

THIS DRAWING IS A CONTROLLED DOCUMENT.  
 P/N: 1426506

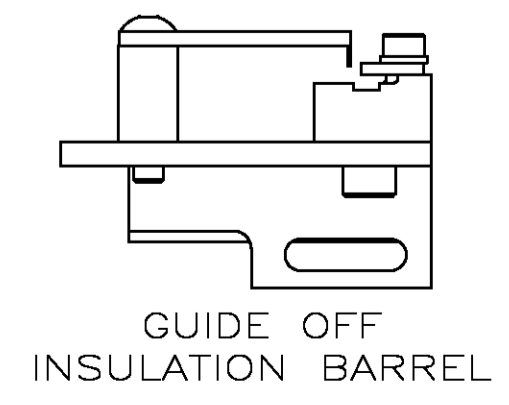
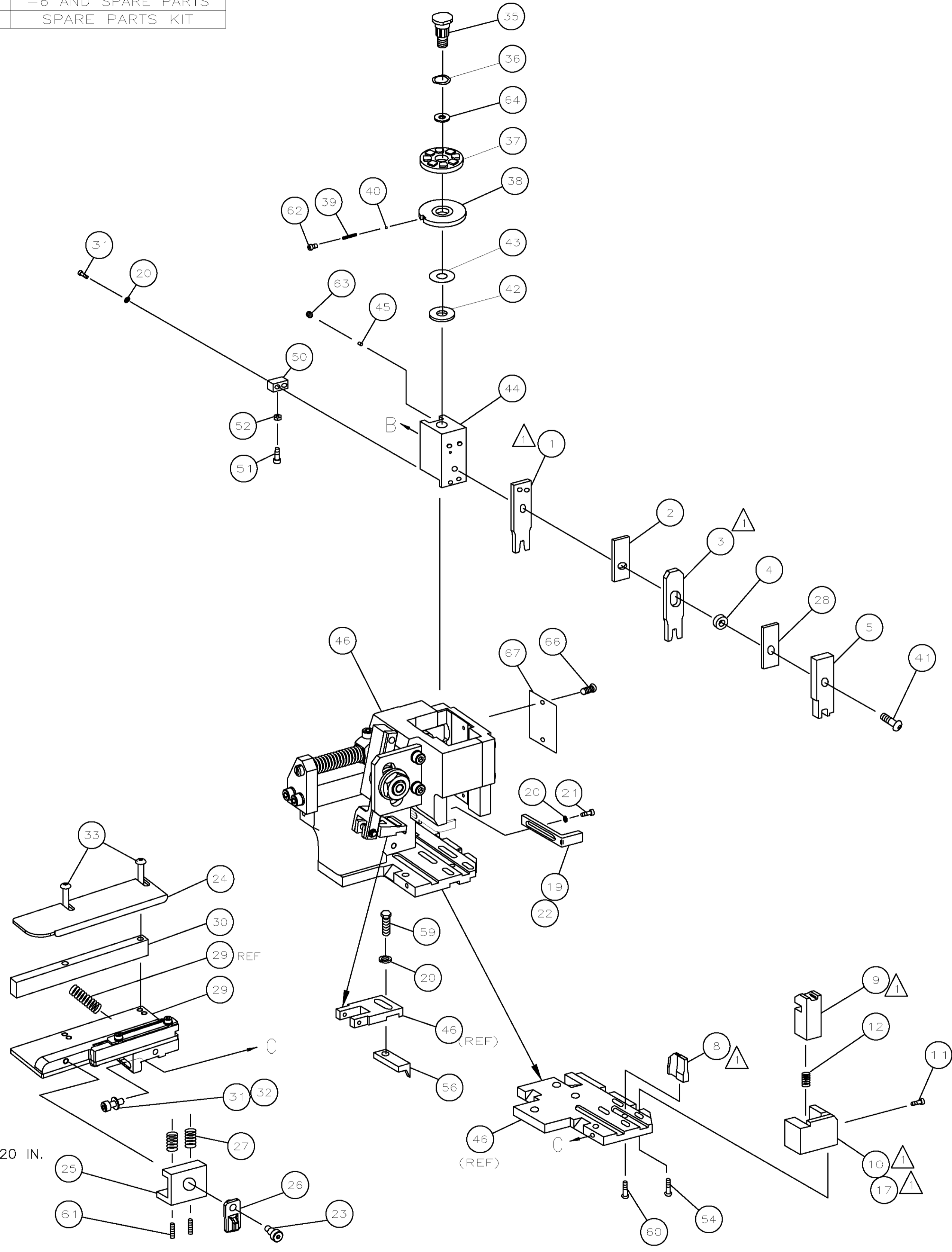
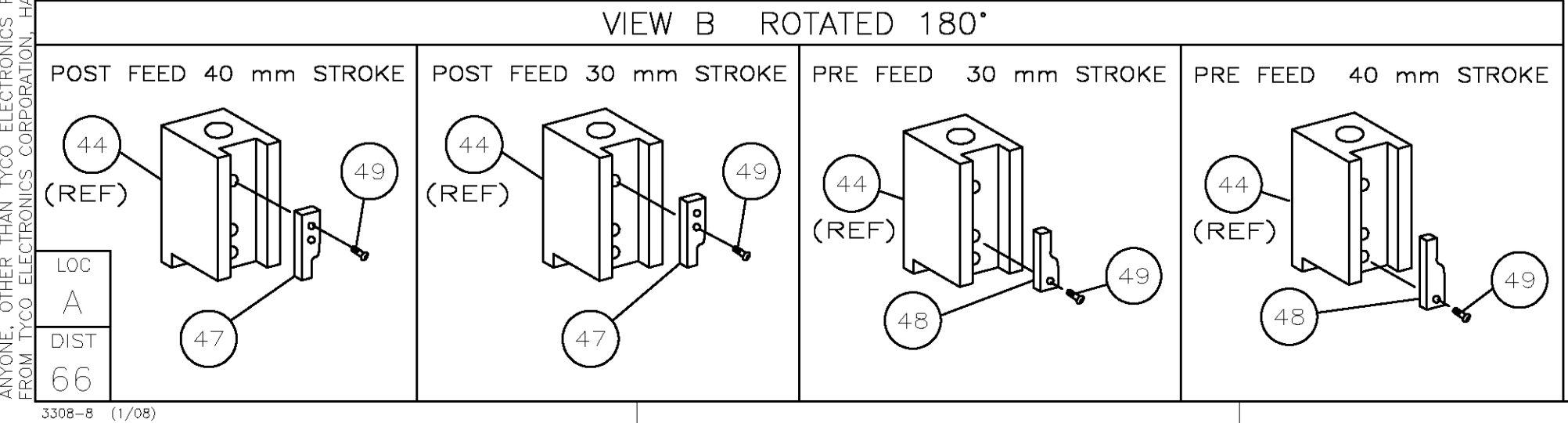
CRIMP DATA AMP TERMINAL AMP CRIMP SPECS			
TERMINAL NAME: REC. FASTON, PIGGYBACK, .110 SRS			
CRIMP	SIZE	TYPE	RANGE
WIRE	1.78 [.070 IN]	F	22-18 AWG
INSUL	3.56 [.140 IN]	0	3.05 MAX [.120 IN MAX]
WIRE STRIP LENGTH		APPL INSTRUCTION	
4.32 [.170 IN]		408-8322	
TERMINAL APPL SPEC	114-2082	FEED	11.20 [.440 IN]

TERMINALS APPLIED					
62003	4	-	-	-	-
63242	4	-	-	-	-
63961	4	-	-	-	-
1217145-1	-	-	-	-	-
1217083	4	-	-	-	-

WIRE SIZE mm² AWG	CRIMP HEIGHT	PIN PN AND LENGTH [IN]
18 AWG	1.17 ±0.05 [.046 ±.002 IN]	3-354779-0 [.3140]
20 AWG	1.02 ±0.05 [.040 ±.002 IN]	4-354779-4 [.3210]
22 AWG	0.94 ±0.05 [.037 ±.002 IN]	5-354779-2 [.3250]

SET UP GAGE	LAYOUT
458637-3	L1426506

- 1. RECOMMENDED SPARE PARTS.
- 2. GREASE RAM, CAM, CAM FOLLOWER AND FEED ROD LIGHTLY.
- 3. LUBRICATE DAILY PER THE APPLICATOR INSTRUCTION SHEET SUPPLIED WITH THE APPLICATOR.
- 4. INSULATION RANGE OF 62003 TO BE .060-.100 IN.  
INSULATION RANGE OF 63242, 63961 & 1217083 TO BE .080-.120 IN.



QTY REQD PER ASSY	PART NO	DESCRIPTION	ITEM NO						
-	1	1	1	1	1	1	1426506	PRINT, APPLICATOR LOG SHEET	73
-	1	1	1	1	1	1	1338705-1	DOCUMENTATION PACKAGE	72
-	-	-	-	-	-	-	-	-	70
-	-	-	-	-	-	-	-	-	69
-	-	-	-	-	-	-	-	-	68
-	1	1	1	1	1	1	461264-1	PLATE, IDENTIFICATION	67
-	2	2	2	2	2	2	21017-2	SCR,DRIVE(#2x.19)ID PLATE	66
-	-	-	-	-	-	-	-	-	65
-	1	1	1	1	1	1	986950-1	WASHER, FLAT PRECISION	64
-	1	1	1	1	1	1	3-18031-0	SCR,SKT SET(M6X6)RAM	63
-	1	1	1	1	1	1	18023-9	SCR,SHC(M4X6)INS DISC	62
-	2	2	2	2	2	2	2-18032-5	SCR,SET(M5X20)DRAG	61
-	1	1	1	1	1	1	18024-7	SCR,BHC(M4X10)ANVIL	60
-	1	1	1	1	1	1	5-18022-2	SCR,HEX(M4X8)FEED FINGER	59
-	-	-	-	-	-	-	-	-	58
-	-	-	-	-	-	-	-	-	57
-	1	1	1	1	1	1	1338685-1	PAWL, FEED	56
-	-	-	-	-	-	-	-	-	55
-	2	2	2	2	2	2	18024-8	SCR,BHC(M4x12)SHEAR HOLDER	54
-	-	-	-	-	-	-	-	-	53
-	1	1	1	1	1	1	18030-1	NUT,HEX(M3)HOLD DOWN	52
-	1	1	1	1	1	1	811242-5	BUMPER, HOLDDOWN	51
-	1	1	1	1	1	1	690753-2	SPACER, TONKER	50
-	1	1	1	1	1	1	18024-3	SCR,BHC(M3X10)CAM	49
-	-	-	-	-	-	-	-	-	48
-	1	-	-	-	-	-	1338675-1	CAM, PRE FEED 30 & 40 mm ST	47
-	1	-	-	-	-	-	1338676-1	CAM, POST FEED 30 & 40 mm ST	46
-	1	1	1	1	1	1	1320999-3	APPLICATOR BASIC SUBASSY	45
-	1	1	1	1	1	1	690191-1	PLUG, NYLON	44
-	1	1	1	1	1	1	1338660-1	RAM	43
-	1	1	1	1	1	1	690125-1	WASHER, LAMINATED	42
-	1	1	1	1	1	1	690124-1	WASHER, RAM	41
-	1	1	1	1	1	1	2-18024-6	SCR,BHC(M8X25)RAM	40
-	1	1	1	1	1	1	23241-1	BALL, STEEL	39
-	1	1	1	1	1	1	2-22278-7	SPRING, COMPRESSION	38
-	1	1	1	1	1	1	1320922-1	DISC, INSULATION	37
-	1	1	1	1	1	1	354777-1	WIRE DISC, PLASTIC	36
-	1	1	1	1	1	1	22480-5	WASHER, SPRING	35
-	1	1	1	1	1	1	690212-1	POST, RAM	34
-	-	-	-	-	-	-	-	-	33
-	2	2	2	2	2	2	1-18024-0	SCR,BHC(M4X20)STRIP GUIDE	32
-	1	1	1	1	1	1	18027-2	WASHER, FLAT(M4)	31
-	3	3	3	3	3	3	1-18023-2	SCR,SKT CAP(M4X12)MOUNT BLOCK	30
-	1	1	1	1	1	1	1320908-1	SPACER, STRIP GUIDE	29
-	1	1	1	1	1	1	1633073-1	STRIP GUIDE PLATE ASSY	28
-	1	1	1	1	1	1	1-455888-9	SPACER, FRONT SHEAR DEP	27
-	2	2	2	2	2	2	1-22284-0	SPRING, DRAG	26
-	1	1	1	1	1	1	356835-1	LEVER, DRAG RELEASE	25
-	1	1	1	1	1	1	240792-1	DRAG, TERMINAL	24
-	1	1	1	1	1	1	1320928-1	PLATE, STRIP GUIDE	23
-	1	1	1	1	1	1	980371-4	SCR,SHC SHLD	22
-	1	-	-	-	-	-	690472-2	STRIPPER	21
-	1	1	1	1	1	1	1-18023-1	SCR,SHC(M4X10)STRIPPER	20
-	4	4	4	4	4	4	18025-2	WASHER,LOCK(M4)STRIPPER	19
-	-	-	-	-	-	-	-	-	18
-	1	-	-	-	-	-	1338684-1	HOLDER, SHEAR, FRONT (NO-CUT)	17
-	-	-	-	-	-	-	-	-	16
-	-	-	-	-	-	-	-	-	15
-	-	-	-	-	-	-	-	-	14
-	-	-	-	-	-	-	-	-	13
-	1	1	1	1	1	1	3-22280-3	SPRING, SHEAR	12
-	1	1	1	1	1	1	356885-4	STOP, SHEAR	11
-	-	-	-	-	-	-	-	-	10
-	1	1	1	1	1	1	1320921-1	HOLDER, SHEAR, FRONT (CUT)	9
-	1	1	1	1	1	1	454276-1	SHEAR, FLOAT (FRONT)	8
-	1	2	2	2	1	1	6-1333203-8	ANVIL	7
-	-	-	-	-	-	-	-	-	6
-	-	-	-	-	-	-	-	-	5
-	1	1	1	1	1	1	1-455889-4	DEPRESSOR, SHEAR (FRONT)	4
-	1	1	1	1	1	1	1-238011-0	SPACER, BLOCK CRIMPER	3
-	1	2	2	2	1	1	5-683454-0	CRIMPER, INSULATION	2
-	1	1	1	1	1	1	455888-8	SPACER, CRIMPER	1
-	1	2	2	2	1	1	1-456404-8	CRIMPER, WIRE	1

QTY REQD PER ASSY

PARTS LIST

DWN: M. CLIFFORD  
 CHR: -  
 APVD: F. BACKHURST  
 NAME: F. BACKHURST

09JUN04 MATERIAL: - HEAT TREAT: -

09JUN04

Tyco Electronics Tyco Electronics Corporation Harrisburg, PA 17105-3608

SCALE: - SIZE: A1 DRAWING NO: 1426506 SHEET: 1 of 1 REV: B1

LOC: A DIST: 66

REVISION RECORD: B1 ECR-10-010163 19MAY2010 YY SX

DATE: 19MAY2010 DWN: APVD: SURFACE TEXTURE: ✓

INCHES: DIMENSIONS: 0 PLC ±.010 1 PLC ±.008 2 PLC ±.006 3 PLC ±.005 4 PLC ±.004

TOLEANCES UNLESS OTHERWISE SPECIFIED: ANGLES: SURFACE TEXTURE: ✓

GUIDE OFF INSULATION BARREL

13APR2010 3:02pm

CUSTOMER ACCESSIBLE PRODUCTION DRAWING