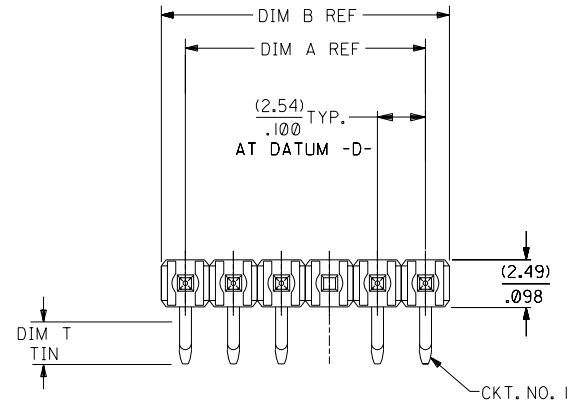
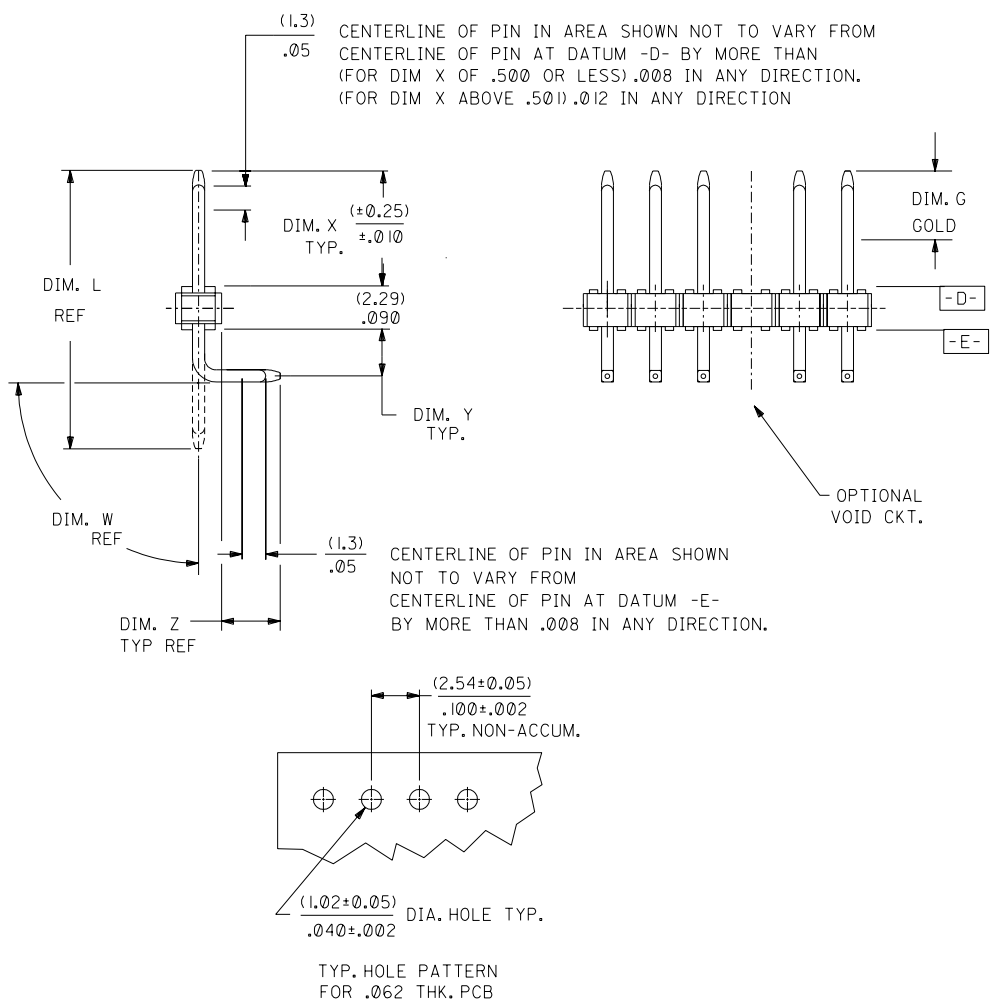


NO. OF CKTS.	DIM. A	DIM. B
2	.100 (2.54)	.200 (5.08)
3	.200 (5.08)	.300 (7.62)
4	.300 (7.62)	.400 (10.16)
5	.400 (10.16)	.500 (12.70)
6	.500 (12.70)	.600 (15.24)
7	.600 (15.24)	.700 (17.78)
8	.700 (17.78)	.800 (20.32)
9	.800 (20.32)	.900 (22.86)
10	.900 (22.86)	1.000 (25.40)
11	1.000 (25.40)	1.100 (27.94)
12	1.100 (27.94)	1.200 (30.48)
13	1.200 (30.48)	1.300 (33.02)
14	1.300 (33.02)	1.400 (35.56)
15	1.400 (35.56)	1.500 (38.10)
16	1.500 (38.10)	1.600 (40.64)
17	1.600 (40.64)	1.700 (43.18)
18	1.700 (43.18)	1.800 (45.72)
19	1.800 (45.72)	1.900 (48.26)
20	1.900 (48.26)	2.000 (50.80)
21	2.000 (50.80)	2.100 (53.34)
22	2.100 (53.34)	2.200 (55.88)
23	2.200 (55.88)	2.300 (58.42)
24	2.300 (58.42)	2.400 (60.96)
25	2.400 (60.96)	2.500 (63.50)
26	2.500 (63.50)	2.600 (66.04)
27	2.600 (66.04)	2.700 (68.58)
28	2.700 (68.58)	2.800 (71.12)
29	2.800 (71.12)	2.900 (73.66)
30	2.900 (73.66)	3.000 (76.20)
31	3.000 (76.20)	3.100 (78.74)
32	3.100 (78.74)	3.200 (81.28)
33	3.200 (81.28)	3.300 (83.82)
34	3.300 (83.82)	3.400 (86.36)
35	3.400 (86.36)	3.500 (88.90)
36	3.500 (88.90)	3.600 (91.44)



- NOTES:
1. MATERIAL: 30% GLASS FILLED NYLON COLOR: BLACK
 2. PIN PUSHOUT 3 LBS. MIN.
 3. SOLDERABILITY PER ES-152.
 4. PLATING: (159) PREPLATED BRIGHT TIN/LEAD (90/10) .000150 MIN
(567) SELECT GOLD .000015 MIN
SELECT TIN-LEAD .000100 MIN
OVER .000050 MIN NICKEL.
(569) SELECT GOLD .000030 MIN
SELECT TIN-LEAD .000100 MIN
OVER .000050 MIN NICKEL.
 5. INDIVIDUAL CIRCUIT SIZES ARE CUT FROM 36 CIRCUIT PARTS.
 6. PRODUCT SPECIFICATION: PS-10-07



T8	ADD 1057/1100 UCP2003-2520 06/03/2003 ELHAG
T7	ADD 1032/1066 UCP2003-2151 04/14/2003 ELHAG
T6	ADD 0963/1031 UCP2003-1747 02/13/2003 ELHAG
T5	ADD 0920/0968 UCP2003-1546 12/6/2002 SAMIEC
T4	REV 0899 UCP2003-0590 10/7/2002 SAMIEC

DIMENSIONS SHOWN (METRIC) INCH		▽ = 0		▼ = 0		REVISE ONLY ON CAD SYSTEM	
UNLESS OTHERWISE SPECIFIED TOLERANCES: ANGULAR ± 1/2°							
INCH		METRIC		TITLE			
3 PLACES	± .010			WAFER ASSY., SINGLE ROW			
2 PLACES	± .014	± 0.25		.100 Ø BREAKAWAY			
1 PLACE		± 0.36		42377 SERIES DWG			
DRAFT WHERE APPLICABLE MUST REMAIN WITHIN DIMENSIONS				MOLEX INCORPORATED		SHEET NO. DATE	
PART NO.		DRWG. NO.		U.S.A.		1 OF 6 09/15/88	
SEE CHART		SDA-42377					
DRWG. BY: JJS	CHK'D. BY: PATEL	FILE NAME: S42377X1	THIS DRAWING CONTAINS INFORMATION THAT IS PROPRIETARY TO MOLEX INC. AND SHOULD NOT BE USED WITHOUT WRITTEN PERMISSION.	DIV.:	SIZE:		
APP'D. BY: LENZ	SCALE:			C	C		

13		12		11		10		9		8		7		6		42377		4		3		2		1	
ENG. NO.	HEADER NO.	PIN NO.	DIM. L	DIM. X	DIM. Y	DIM. Z	DIM. W			NO OF CKTS	KINKED PINS	VOID CKTS	PACKAGING	EDPS NO IN COL											
J A-42377-0422/0456	42312-0036	42663-BCA I22	.565 (14.35)	.244 (6.20)	.070 (1.78)	.135 (3.43)	90°	N/A ()	OVERALL ()	2-36	SMES-42003	NONE	40873-0041	1											
A-42377-0457/0491	42312-0036	42663-CFA I59	.685 (17.40)	.304 (7.72)	.070 (1.78)	.195 (4.95)	90°	N/A ()	OVERALL ()	2-36	SMES-42003	NONE	40873-0041	2											
A-42377-0492/0526	42312-0036	42663-ABA I59	.455 (11.56)	.149 (3.78)	.070 (1.78)	.120 (3.05)	90°	N/A ()	OVERALL ()	2-36	NO	NONE	40873-0041	3											
A-42377-0527/0532	42312-0036	42663-BCA I59	.565 (14.35)	.244 (6.20)	.070 (1.78)	.135 (3.43)	90°	N/A ()	OVERALL ()	6-11	SMES-43499-0001	NONE	40873-0041	4											
A-42377-0658/0692	42312-0036	42663-FYA I59	1.070 (27.18)	.748 (19.00)	.070 (1.78)	.135 (3.43)	90°	N/A ()	OVERALL ()	2-36	SMES-42003	NONE	40873-0041	5											
A-42377-0693/0726	42312-0036	42663-BCA I59	.565 (14.35)	.244 (6.20)	.070 (1.78)	.135 (3.43)	90°	N/A ()	OVERALL ()	3-36	SMES-42003	2	40873-0041	6											

COLUMN NO. 1		COLUMN NO. 2		COLUMN NO. 3		COLUMN NO. 4		COLUMN NO. 5		COLUMN NO. 6	
EDP NO.	ENG. NO.	NO OF CKTS	EDP NO.	ENG. NO.	NO OF CKTS	EDP NO.	ENG. NO.	NO OF CKTS	EDP NO.	ENG. NO.	NO OF CKTS
22-28-9026	A-42377-0422	2	22-28-9027	A-42377-0457	2	22-28-9028	A-42377-0492	2	423-77-0658	A-42377-0658	2
22-28-9036	A-42377-0423	3	22-28-9037	A-42377-0458	3	22-28-9038	A-42377-0493	3	423-77-0659	A-42377-0659	3
22-28-9046	A-42377-0424	4	22-28-9047	A-42377-0459	4	22-28-9048	A-42377-0494	4	423-77-0660	A-42377-0660	4
22-28-9056	A-42377-0425	5	22-28-9057	A-42377-0460	5	22-28-9058	A-42377-0495	5	423-77-0661	A-42377-0661	5
22-28-9066	A-42377-0426	6	22-28-9067	A-42377-0461	6	22-28-9068	A-42377-0496	6	423-77-0662	A-42377-0662	6
22-28-9076	A-42377-0427	7	22-28-9077	A-42377-0462	7	22-28-9078	A-42377-0497	7	423-77-0663	A-42377-0663	7
22-28-9086	A-42377-0428	8	22-28-9087	A-42377-0463	8	22-28-9088	A-42377-0498	8	423-77-0664	A-42377-0664	8
22-28-9096	A-42377-0429	9	22-28-9097	A-42377-0464	9	22-28-9098	A-42377-0499	9	423-77-0665	A-42377-0665	9
22-28-9106	A-42377-0430	10	22-28-9107	A-42377-0465	10	22-28-9108	A-42377-0500	10	423-77-0666	A-42377-0666	10
22-28-9116	A-42377-0431	11	22-28-9117	A-42377-0466	11	22-28-9118	A-42377-0501	11	423-77-0667	A-42377-0667	11
22-28-9126	A-42377-0432	12	22-28-9127	A-42377-0467	12	22-28-9128	A-42377-0502	12	423-77-0668	A-42377-0668	12
22-28-9136	A-42377-0433	13	22-28-9137	A-42377-0468	13	22-28-9138	A-42377-0503	13	423-77-0669	A-42377-0669	13
22-28-9146	A-42377-0434	14	22-28-9147	A-42377-0469	14	22-28-9148	A-42377-0504	14	423-77-0670	A-42377-0670	14
22-28-9156	A-42377-0435	15	22-28-9157	A-42377-0470	15	22-28-9158	A-42377-0505	15	423-77-0671	A-42377-0671	15
22-28-9166	A-42377-0436	16	22-28-9167	A-42377-0471	16	22-28-9168	A-42377-0506	16	423-77-0672	A-42377-0672	16
22-28-9176	A-42377-0437	17	22-28-9177	A-42377-0472	17	22-28-9178	A-42377-0507	17	423-77-0673	A-42377-0673	17
22-28-9186	A-42377-0438	18	22-28-9187	A-42377-0473	18	22-28-9188	A-42377-0508	18	423-77-0674	A-42377-0674	18
22-28-9196	A-42377-0439	19	22-28-9197	A-42377-0474	19	22-28-9198	A-42377-0509	19	423-77-0675	A-42377-0675	19
22-28-9206	A-42377-0440	20	22-28-9207	A-42377-0475	20	22-28-9208	A-42377-0510	20	423-77-0676	A-42377-0676	20
22-28-9216	A-42377-0441	21	22-28-9217	A-42377-0476	21	22-28-9218	A-42377-0511	21	423-77-0677	A-42377-0677	21
22-28-9226	A-42377-0442	22	22-28-9227	A-42377-0477	22	22-28-9228	A-42377-0512	22	423-77-0678	A-42377-0678	22
22-28-9236	A-42377-0443	23	22-28-9237	A-42377-0478	23	22-28-9238	A-42377-0513	23	423-77-0679	A-42377-0679	23
22-28-9246	A-42377-0444	24	22-28-9247	A-42377-0479	24	22-28-9248	A-42377-0514	24	423-77-0680	A-42377-0680	24
22-28-9256	A-42377-0445	25	22-28-9257	A-42377-0480	25	22-28-9258	A-42377-0515	25	423-77-0681	A-42377-0681	25
22-28-9266	A-42377-0446	26	22-28-9267	A-42377-0481	26	22-28-9268	A-42377-0516	26	423-77-0682	A-42377-0682	26
22-28-9276	A-42377-0447	27	22-28-9277	A-42377-0482	27	22-28-9278	A-42377-0517	27	423-77-0683	A-42377-0683	27
22-28-9286	A-42377-0448	28	22-28-9287	A-42377-0483	28	22-28-9288	A-42377-0518	28	423-77-0684	A-42377-0684	28
22-28-9296	A-42377-0449	29	22-28-9297	A-42377-0484	29	22-28-9298	A-42377-0519	29	423-77-0685	A-42377-0685	29
22-28-9306	A-42377-0450	30	22-28-9307	A-42377-0485	30	22-28-9308	A-42377-0520	30	423-77-0686	A-42377-0686	30
22-28-9316	A-42377-0451	31	22-28-9317	A-42377-0486	31	22-28-9318	A-42377-0521	31	423-77-0687	A-42377-0687	31
22-28-9326	A-42377-0452	32	22-28-9327	A-42377-0487	32	22-28-9328	A-42377-0522	32	423-77-0688	A-42377-0688	32
22-28-9336	A-42377-0453	33	22-28-9337	A-42377-0488	33	22-28-9338	A-42377-0523	33	423-77-0689	A-42377-0689	33
22-28-9346	A-42377-0454	34	22-28-9347	A-42377-0489	34	22-28-9348	A-42377-0524	34	423-77-0690	A-42377-0690	34
22-28-9356	A-42377-0455	35	22-28-9357	A-42377-0490	35	22-28-9358	A-42377-0525	35	423-77-0691	A-42377-0691	35
22-28-9366	A-42377-0456	36	22-28-9367	A-42377-0491	36	22-28-9368	A-42377-0526	36	423-77-0692	A-42377-0692	36

R	SEE SHEET I	K4	SEE SHEET I
Q1	SEE SHEET I	K3	SEE SHEET I
Q	SEE SHEET I	K2	SEE SHEET I
P1	SEE SHEET I	K1	SEE SHEET I
M	SEE SHEET I	I	SEE SHEET I
L1	SEE SHEET I	H	SEE SHEET I
L	SEE SHEET I	G	SEE SHEET I
LTR.	REVISIONS	LTR.	REVISIONS

DIMENSIONS SHOWN METRIC INCH
UNLESS OTHERWISE SPECIFIED
TOLERANCES ANGLES IN °/P/P

3 PLACE	± .005	---
2 PLACE	± .01	± 0.13
1 PLACE	---	± 0.25

DRAFT WHERE APPLICABLE MUST
REMAIN WITHIN DIMENSIONS

DRWG. BY: SAMIEC
APP'D. BY: LENZ

CHK'D. BY: PATEL
SCALE: :

▽ = 0 ▽ = 0 REVISE ONLY ON CAD SYSTEM

TITLE
HEADER ASSY RT ANGLE
100% BREAKAWAY
42377 SERIES DWG

MOLEX INCORPORATED
LISLE, ILL. 60532 U.S.A.

SHEET NO. 4 DATE 1 / 4 / 93

PART NO. SDA-42377
FILE NAME: S4237TX4

THIS DRAWING CONTAINS INFORMATION THAT IS PROPRIETARY TO MOLEX INC. AND SHOULD NOT BE USED WITHOUT WRITTEN PERMISSION.

SIZE: C