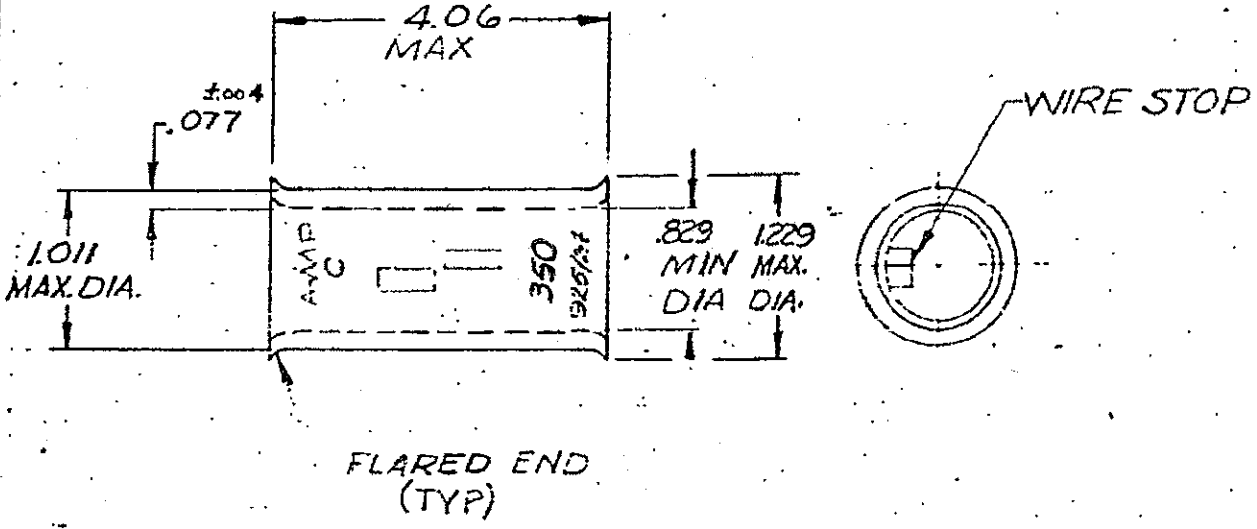


DRAWING MADE IN AMERICAN PROJECTION

LOC 8 PRINT 3613

© 1972 BY AMP INCORPORATED. ALL RIGHTS RESERVED. AMP PATENTS COVERED BY PATENTS ARE NOT REPRODUCED OR PUBLISHED WITHOUT WRITTEN PERMISSION OF AMP INCORPORATED.

| REVISIONS | | | |
|-----------|------------------------------|----------|----------|
| LTH | DESCRIPTION | DATE | APPROVED |
| 0 | NFS 71-0919 | 2-14-72 | PMF |
| A | ADDED RP STAMPING ECN P-1365 | 12-30-74 | W2M |
| B | OBSOLETE PER. G-3121 | 8/17/88 | PMF |
| C | REV PER G-5615 | 1/27/92 | DKS/ATK |
| D | REV/DG10-0030-99 | 3-10-99 | ME/SU |
| E | REVISED PER CG3A-0637-02 | 01/10/02 | DK |



FLARED END (TYP)

| | | | | |
|--|--|---------------------|--|---|
| UNLESS OTHERWISE SPECIFIED DIMENSIONS ARE IN INCHES FRACTIONS: 16 DECIMALS: .008 ANGLES: 5° | CONTRACT NO. <u> </u> | | AMP INCORPORATED HARRISBURG, PENNSYLVANIA | |
| | DATE: <u>May 2-14-72</u> BY: <u>Am. Engineering</u> | | NAME: WIRE SPLICE | AMP-POWER-BUTT WIRE SIZE: 350MCM |
| MATERIAL: ANNIELED COPPER (ASTM-B-75) FINISH: TIN PLATE (ASTM B 545) | APP'D: <u>Abel 2-16-72</u> BY: <u>Engineering 2-16-72</u> | SIZE: A | CODE IDENT NO.: 00779 | NUMBER: 53087 |
| DESIGN APP'D: <u> </u> OTHER APP'D: <u> </u> | SCALE: N.T.S. | SHEET 1 OF 1 | | |